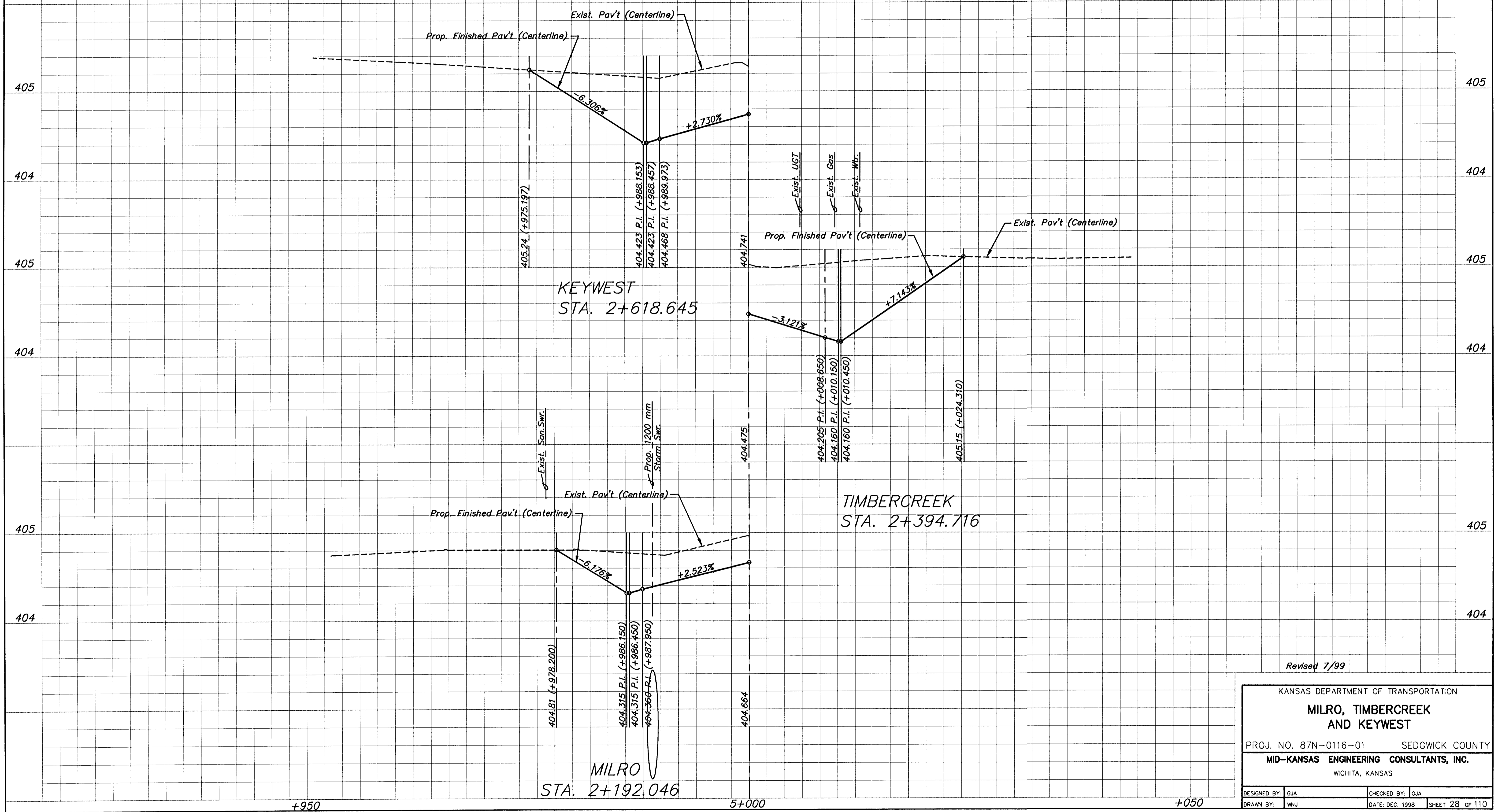


FHWA REG NO.	STATE	PROJECT NO.	YEAR	SHEET NO.	TOTAL SHEETS
7	KANSAS	87N-0116-01	1999	28	110



Revised 7/99

KANSAS DEPARTMENT OF TRANSPORTATION			
MILRO, TIMBERCREEK AND KEYWEST			
PROJ. NO. 87N-0116-01		SEDGWICK COUNTY	
MID-KANSAS ENGINEERING CONSULTANTS, INC.			
WICHITA, KANSAS			
DESIGNED BY: GJA	CHECKED BY: GJA		
DRAWN BY: WNJ	DATE: DEC. 1998	SHEET 28 OF 110	

K:\CIVIL\87043\REVISED\CON\PROF\7043PR14.DWG Fr: Aug 06 13:39:34 1999