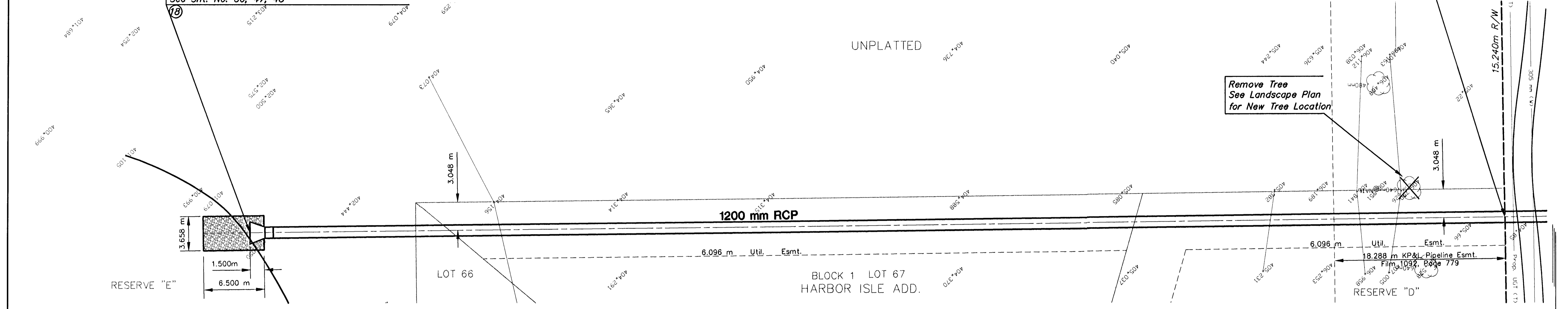


FHWA REG NO.	STATE	PROJECT NO.	YEAR	SHEET NO.	TOTAL SHEETS
7	KANSAS	87N-0116-01	1999	29	110

DATE	BY	REFERENCES NOTED	REFERENCES CHECKED

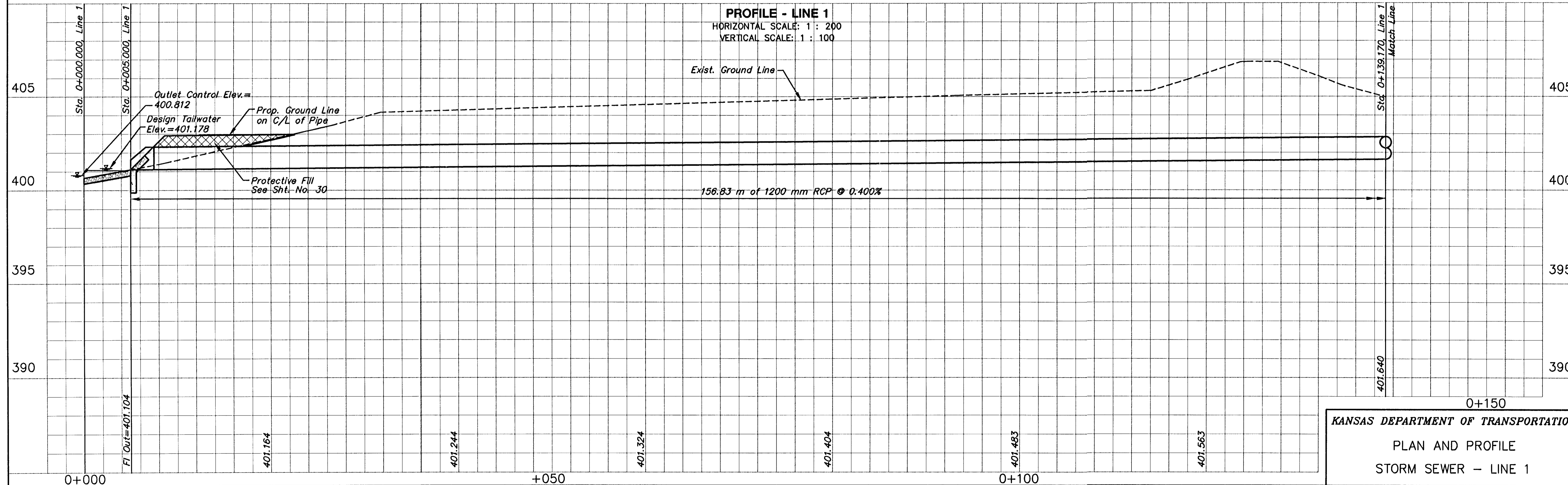
Sta. 0+005.000, Line 1=
 St. Sta. 2+083.820, 149.410 m Rt.
 Begin 1200 mm RCP Storm Swr. w/End
 Section and Concrete Toe Wall
 W=0.610 m, D=1.220 m, L=3.660 m
 Install 21.05 m² Light Stone RipRap w/Geotextile
 Filter Fabric (Trevira Spunbound 1125 or equivalent)
 Install 1200 mm x 156.83 m Storm Swr. (RCP)(W)
 See Sht. No. 30, 47, 48

Sta. 0+139.170, Line 1=
 St. Sta. 2+083.820, 15.240 m Rt.
 Match Line



PLAN - LINE 1
 SCALE: 1 : 200

PROFILE - LINE 1
 HORIZONTAL SCALE: 1 : 200
 VERTICAL SCALE: 1 : 100



KANSAS DEPARTMENT OF TRANSPORTATION
 PLAN AND PROFILE
 STORM SEWER - LINE 1

Revised 7/99

K:\CT\11\97043\REV\STATION\SMS\97043_D2.DWG Mon Aug 02 11:35:04 1999