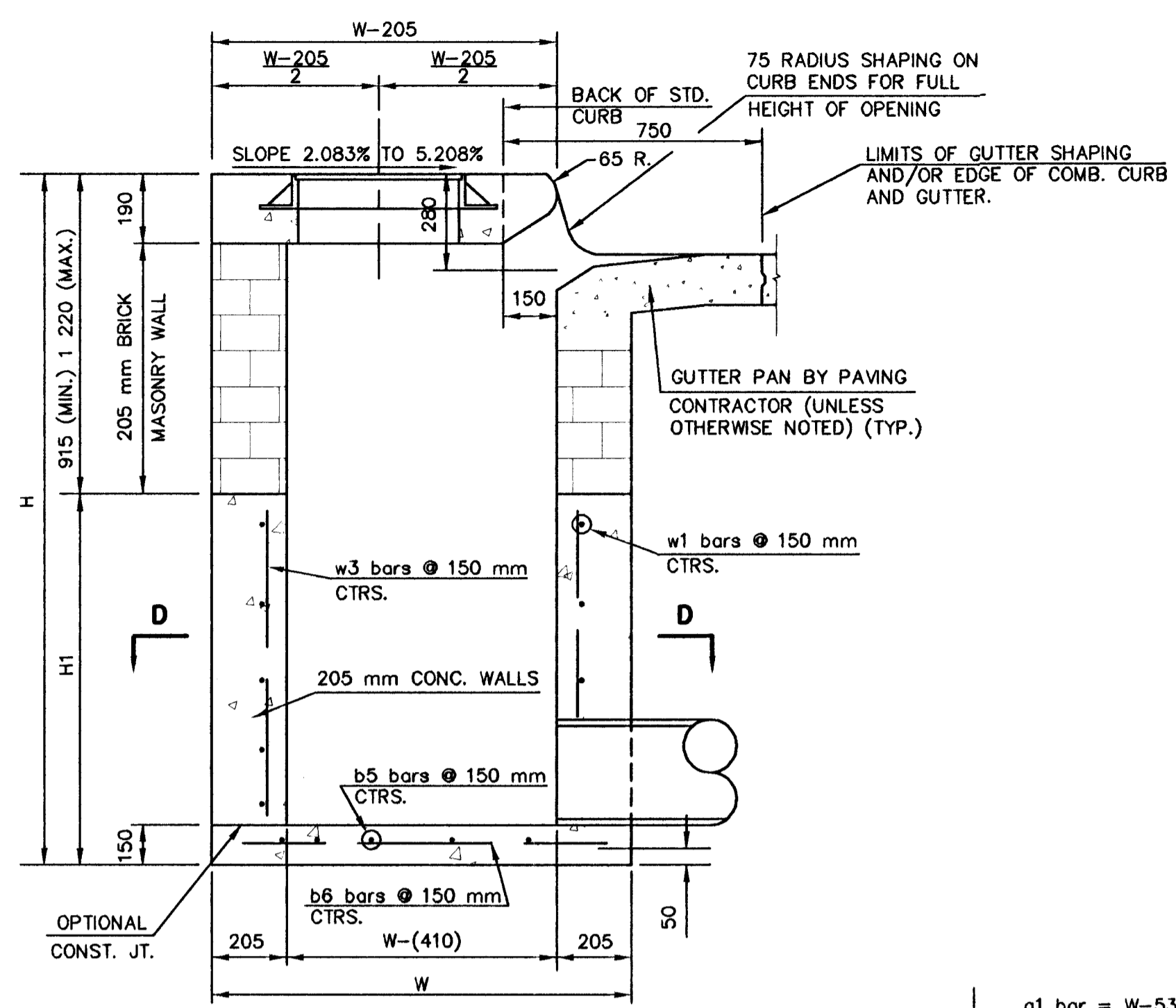
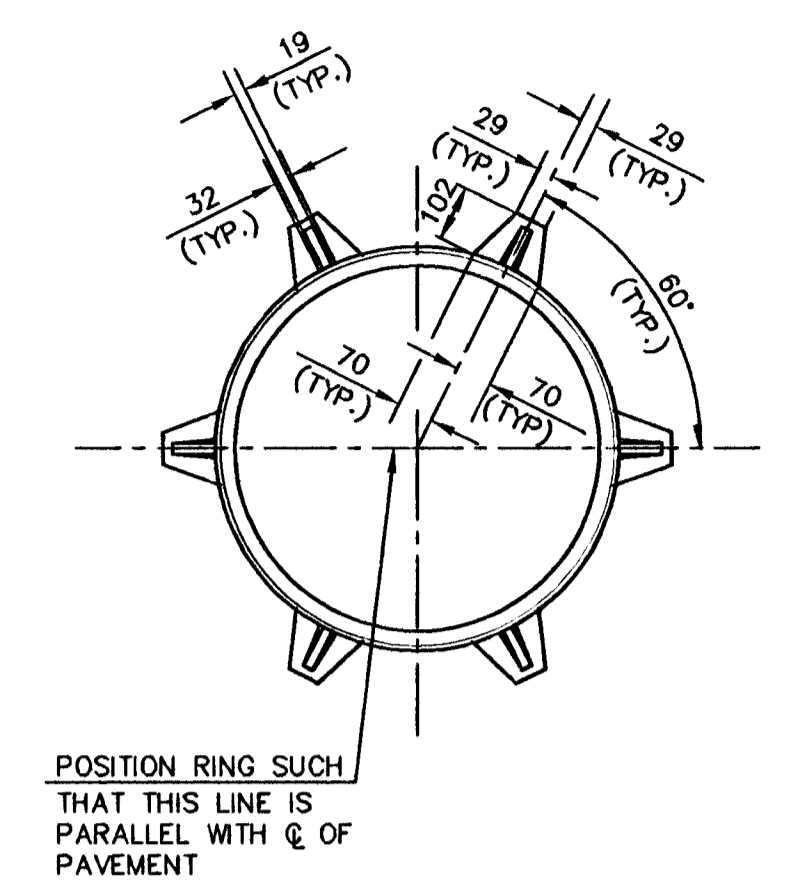


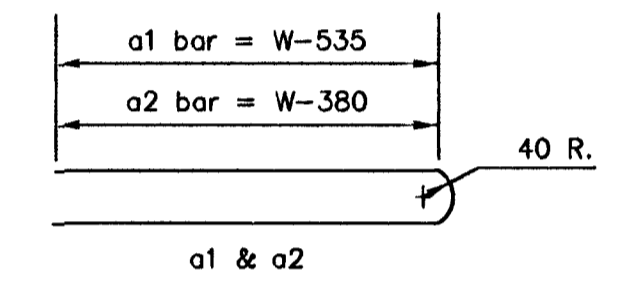
PLAN



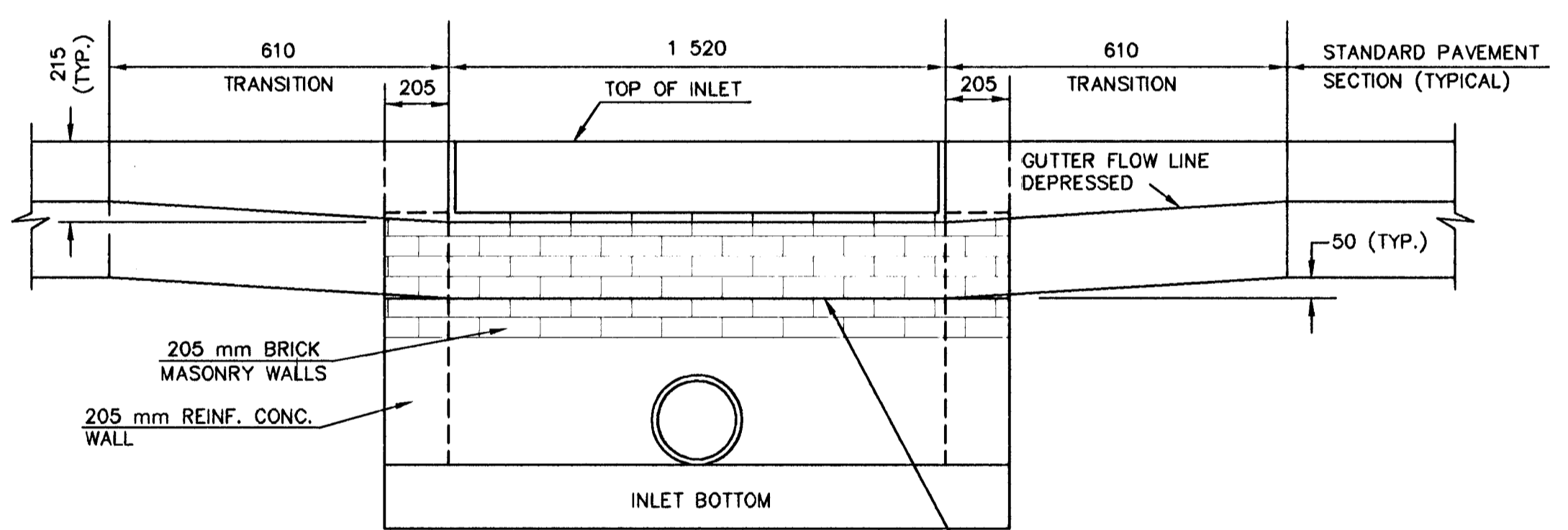
SECTION A-A



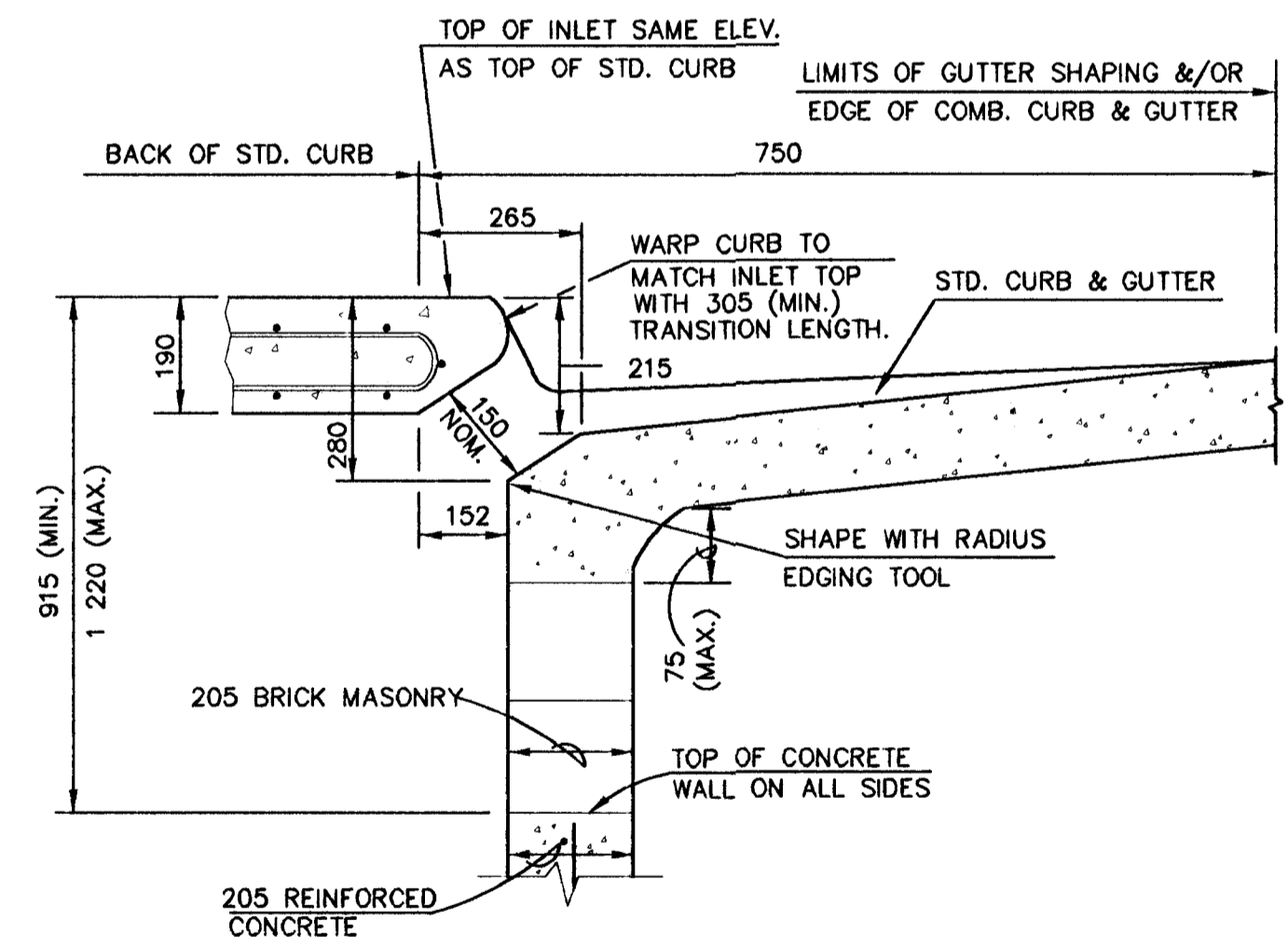
SEE CITY OF WICHITA STANDARD MANHOLE FRAME AND COVER DETAIL SHEET FOR COVER DETAILS TO BE USED WITH INLET FRAME.



BENDING DIAGRAM



SECTION C-C



SECTION B-B

GENERAL NOTES

- CONCRETE SHALL BE C.O.W. STANDARD PAVING MIX. ALL EXPOSED EDGES SHALL BE FINISHED WITH AN EDGING TOOL. REINFORCING BARS SHALL BE FIELD BENT OR CUT TO CLEAR PIPES. ALL BARS ARE #13 BARS AT 150 mm SPACING AND SHALL HAVE A MINIMUM CLEARANCE OF 40 mm UNLESS OTHERWISE NOTED. FLOORS OF INLET SHALL BE SHAPED WITH 10.5 SACKS PER m³ SAND MIX CONCRETE TO INCREASE HYDRAULIC EFFICIENCY SUCH THAT THE INLET WILL BE SELF-CLEANING BETWEEN ALL INLET AND/OR OUTFALL PIPE(S). THE CONTRACTOR WILL BE REQUIRED TO CONSTRUCT 205 mm BRICK MASONRY WALLS BETWEEN THE CONCRETE INLET BASE AND TOP ON THIS INLET WHEN H= 2 135 mm OR LESS AND W= 1 930 mm OR LESS.
- THE ENDS OF ALL PIPES INSTALLED IN INLETS SHALL BE CUT OFF FLUSH WITH THE INSIDE FACE OF THE INLET WALL.

		W=1 321		W=1 626		W=1 930		W=2 235		W=2 540	
MARK	SIZE	NO.	LENGTH	NO.	LENGTH	NO.	LENGTH	NO.	LENGTH	NO.	LENGTH
a1	#13	4	1 700	4	2 310	4	2 920	4	3 530	4	4 140
a2	#13	4	2 005	4	2 615	4	3 225	4	3 835	4	4 445
a3	#13	2	1 220	2	1 525	2	1 830	2	2 135	2	2 440
b1	#13	1	1 855	3	1 855	5	1 855	7	1 855	9	1 855
b2	#13	6	535	6	535	6	535	6	535	6	535
b3	#13	1	1 880	1	1 880	1	1 880	1	1 880	1	1 880
b4	#19	1	1 420	1	1 420	1	1 420	1	1 420	1	1 420
b5	#13	7	1 625	9	1 625	11	1 625	13	1 625	15	1 625
b6	#13	11	1 015	11	1 320	11	1 625	11	1 930	11	2 235

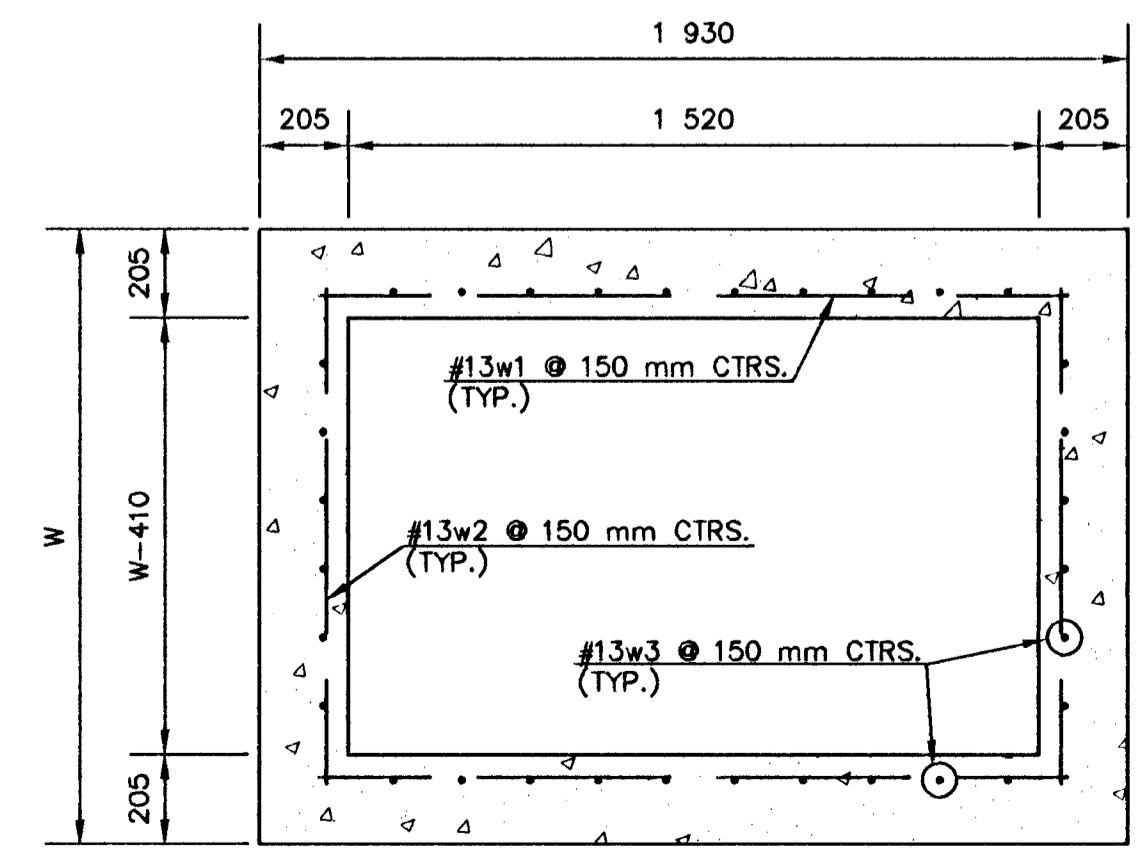
		W=1 321		W=1 626		W=1 930		W=2 235		W=2 540	
MARK	SIZE	NO.	LENGTH	NO.	LENGTH	NO.	LENGTH	NO.	LENGTH	NO.	LENGTH
w1	#13	(1)	1 625	(1)	1 625	(1)	1 625	(1)	1 625	(1)	1 625
w2	#13	(1)	1 015	(1)	1 320	(1)	1 625	(1)	1 930	(1)	2 235
w3	#13	(2)	(2)	(2)	(2)	(2)	(2)	(2)	(2)	(2)	(2)

NOTE: a3 BARS TO BE PLACED APPROX. 50 mm BELOW TOP OF INLET COVER.

(1) $2 \left(\frac{H1-200}{150} + 1 \right)$

(2) $22 + 2 \left(\frac{W-410}{150} + 1 \right)$

(3) (H1-230)



SECTION D-D

STANDARD CURB INLET PRECAST TOPS			
W	PRE-CAST TOP SIZE	PIPE SIZE	m ³ CONC.
1 321	1 118 x 1 930 x 190	530 & SMALLER	± 0.011
1 626	1 421 x 1 930 x 190	600 & 750	± 0.014
1 930	1 725 x 1 930 x 190	900 & 1 050	± 0.018
2 235	2 030 x 1 930 x 190	1 200 & 1 350	± 0.022
2 540	2 335 x 1 930 x 190	1 500 & 1 675	± 0.025

REVISED: 12-21-1984

STANDARD TYPE 1 CURB INLET
INLET OPENING=150 x 1 520

OCTOBER, 1984
CITY OF WICHITA, KANSAS

Design BER KJS	Checked by MWB	Checked by	Checked by
Drawn by	Date	Date	Job No.