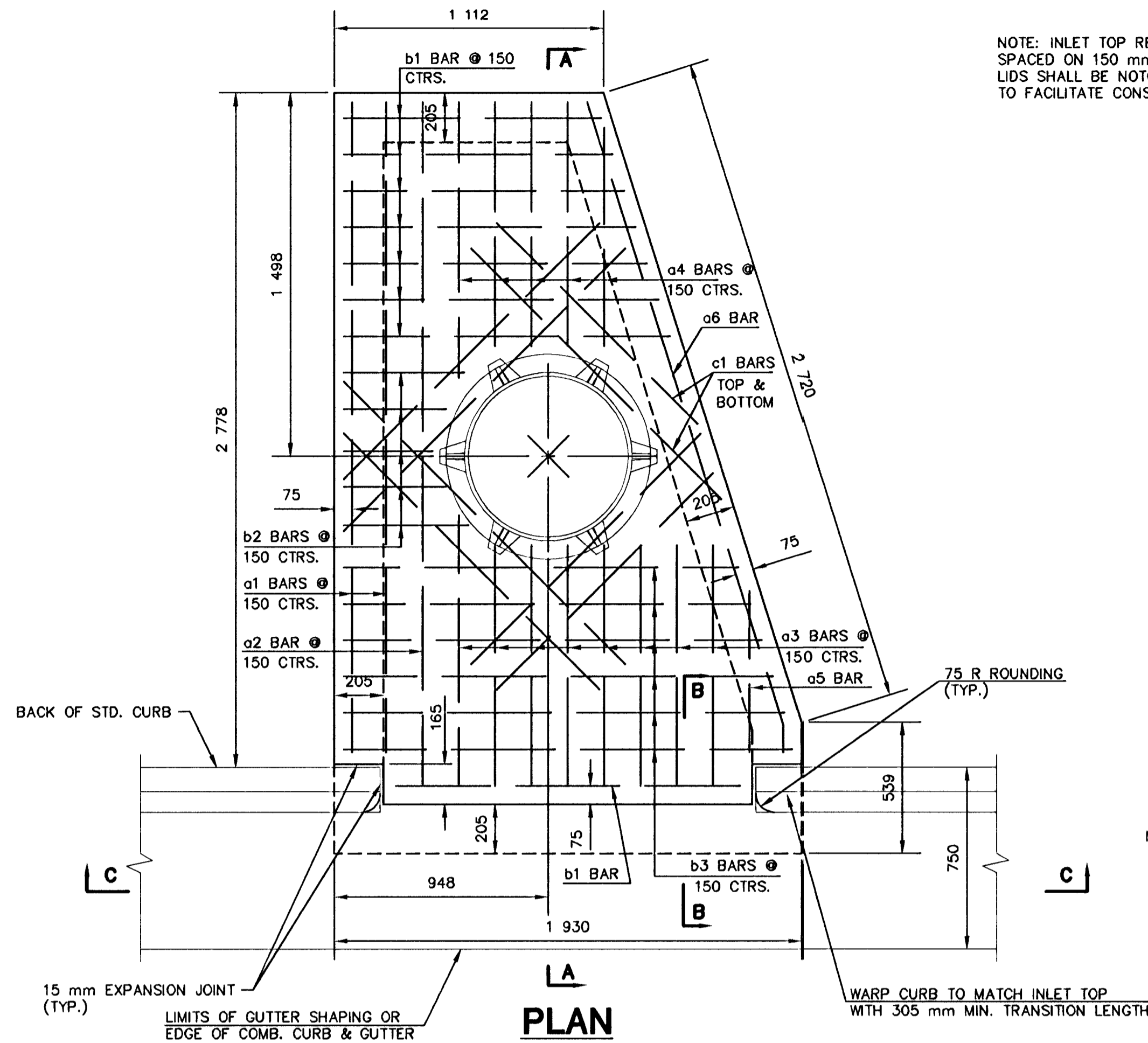


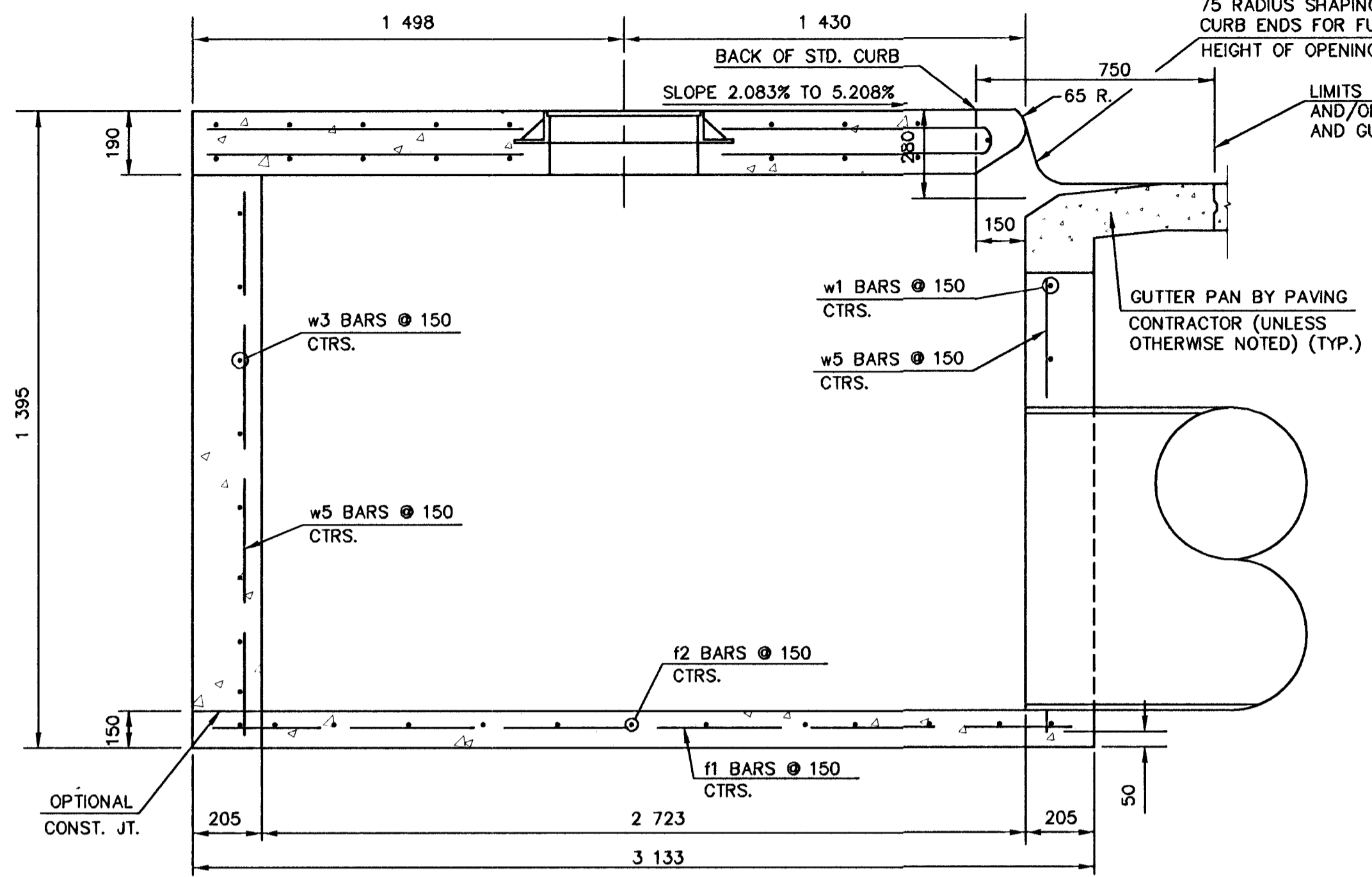
FHWA REGION NO.	STATE	PROJECT NO.	YEAR	SHEET NO.	TOTAL SHEETS
7	KANSAS	87N-0116-01	1999	41	110

DATE	
BY	
REFERENCES NOTED	
REFERENCES CHECKED	

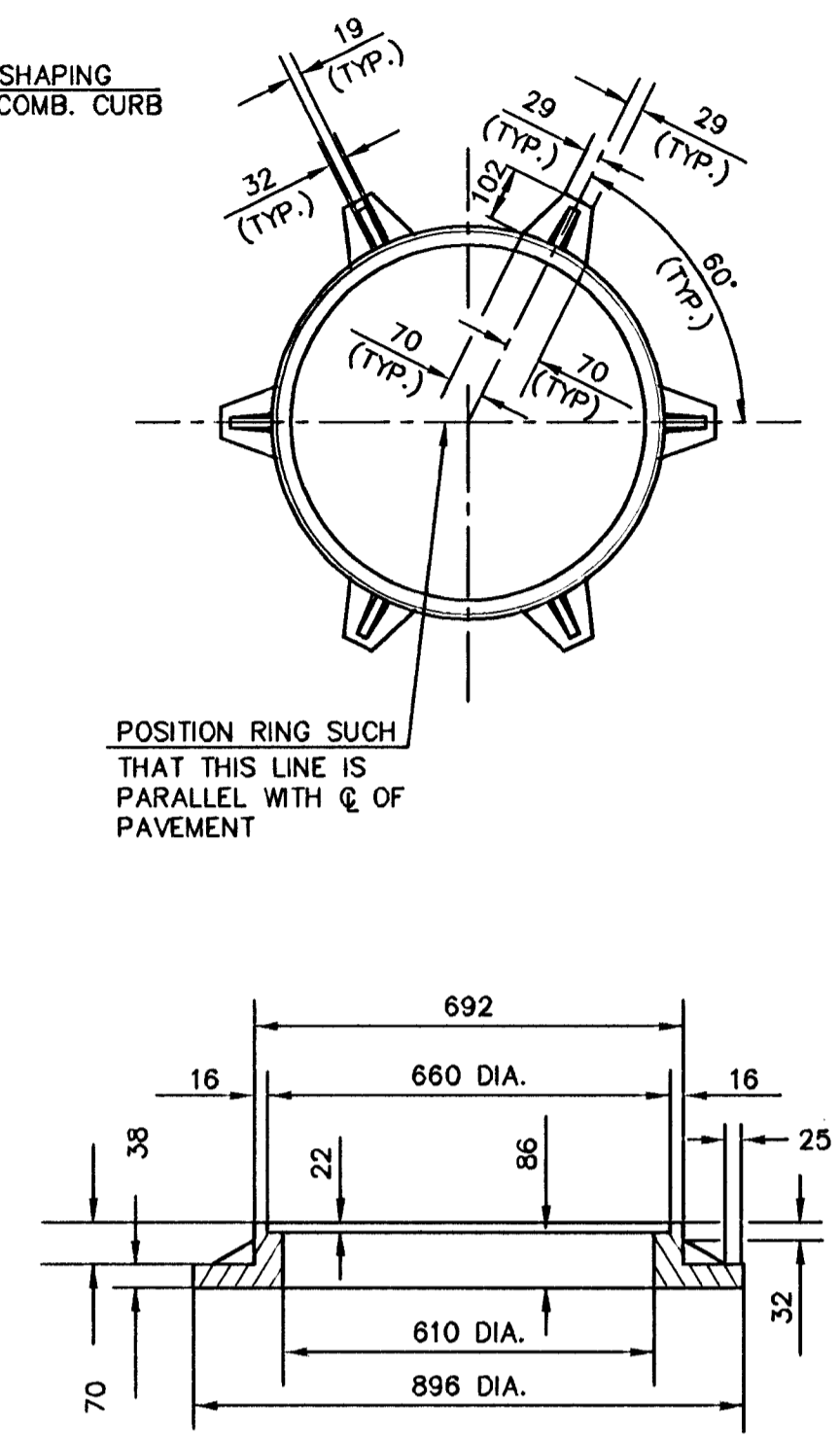


NOTE: INLET TOP REINFORCING SHALL BE SPACED ON 150 mm MAX. CENTERS. INLET LIDS SHALL BE NOTCHED OUT AS INDICATED TO FACILITATE CONSTRUCTION OF CURB.

NOTE: CONCRETE TOPS TO BE INSTALLED ON THIN MORTAR CUSHION TO INSURE FULL SUPPORT ALONG BRICK WALLS. CONCRETE TOPS MAY BE CAST IN PLACE OR PRECAST. CONCRETE USED FOR INLET CONSTRUCTION SHALL BE CONCRETE PAVEMENT MIX.



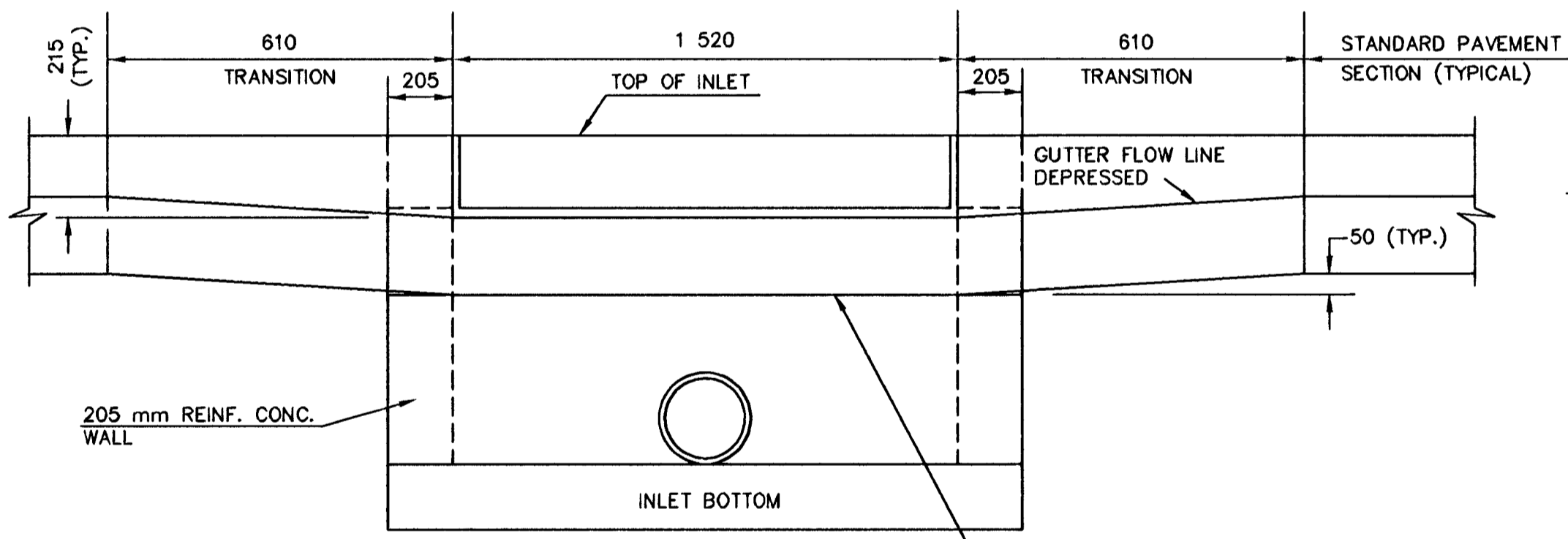
SECTION A-A



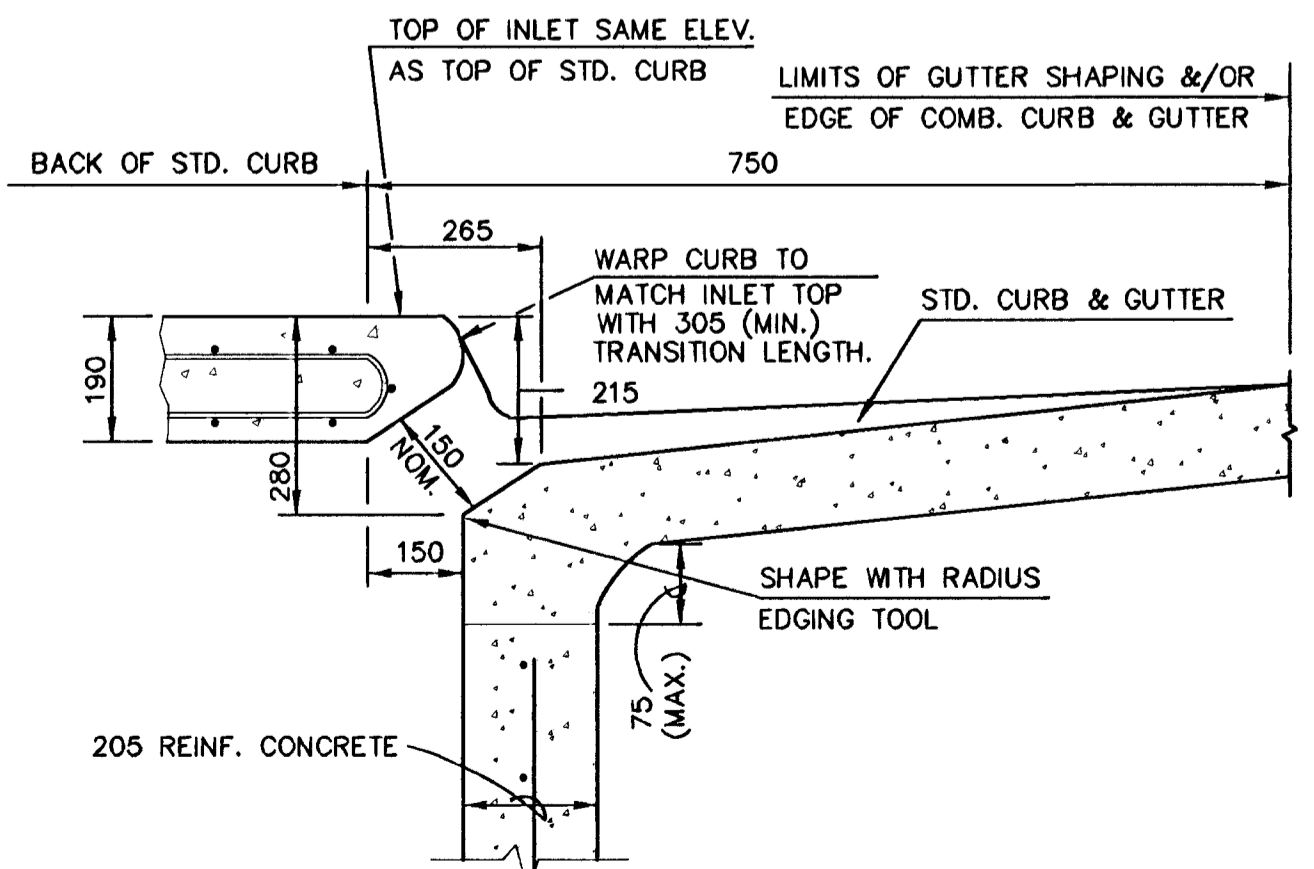
INLET FRAME

WT.=81.65 kg

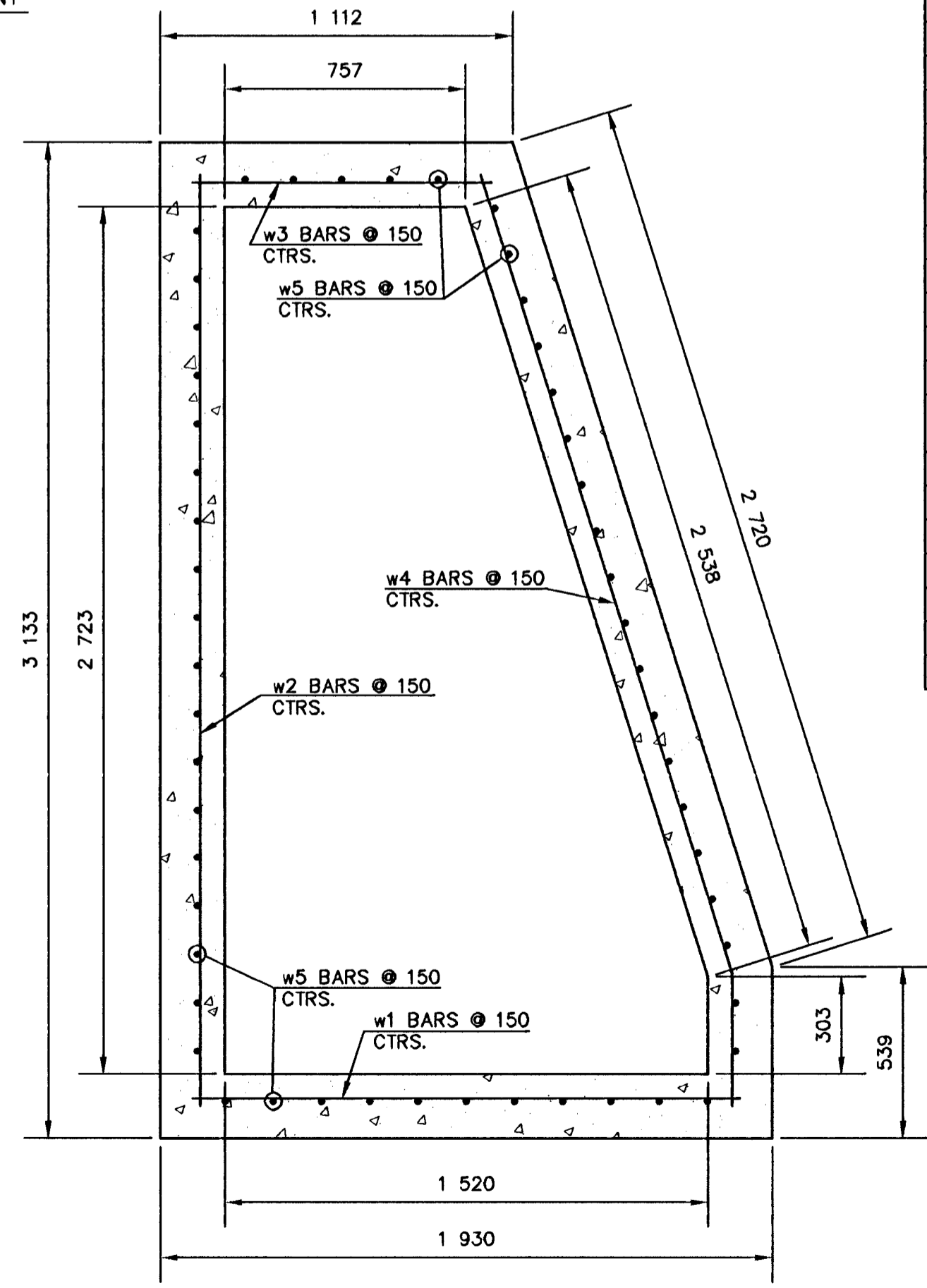
SEE CITY OF WICHITA STANDARD MANHOLE FRAME AND COVER DETAIL SHEET FOR COVER DETAILS TO BE USED WITH INLET FRAME.



SECTION C-C



SECTION B-B



SECTION D-D

SLAB AND FLOOR REINFORCING

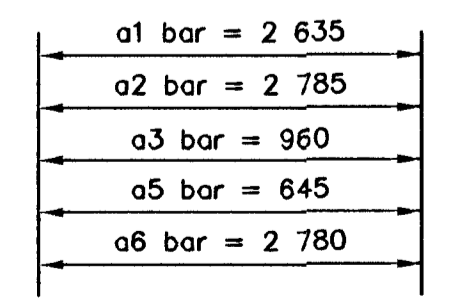
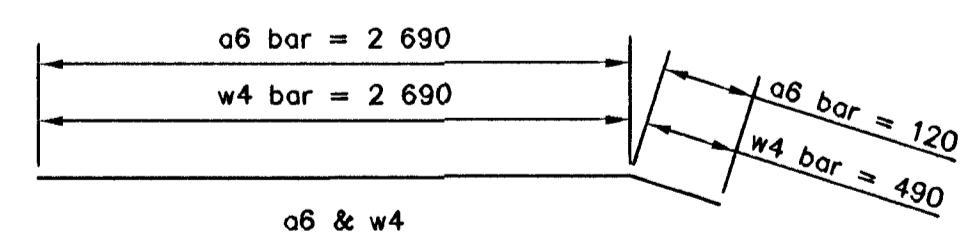
		W=3 133	
MARK	SIZE	NO.	LENGTH
a1	#13	2	5 380
a2	#13	1	5 680
a3	#13	8	2 030
a4	#13	10	1 005
a5	#13	1	1 400
a6	#13	1	5 670
b1	#19	16	1 345
b2	#19	10	545
b3	#19	12	1 850
b4	#19	1	1 420
c1	#19	16	1 650
f1	#13	13	3 055
f2	#13	21	1 850

WALL REINFORCING

w1	#13	10	1 850
w2	#13	10	3 055
w3	#13	10	1 030
w4	#13	10	3 180
w5	#13	61	1 125

CLASS 'A' CONC. (m3) 1.34
REINFORCING STEEL (kg) 458.48

NOTE: c1 BARS TO BE PLACED APPROX. 50 mm BELOW TOP OF INLET COVER.



a1, a2, a3, a5 & a6 BENDING DIAGRAM

GENERAL NOTES

- CONCRETE SHALL BE C.O.W. STANDARD PAVING MIX. ALL EXPOSED EDGES SHALL BE FINISHED WITH AN EDGING TOOL. REINFORCING BARS SHALL BE FIELD BENT OR CUT TO CLEAR PIPES. ALL BARS SHALL HAVE A MINIMUM CLEARANCE OF 40 mm UNLESS OTHERWISE NOTED. FLOORS OF INLET SHALL BE SHAPED WITH 10.5 SACKS PER m3 SAND MIX CONCRETE TO INCREASE HYDRAULIC EFFICIENCY SUCH THAT THE INLET WILL BE SELF CLEANING BETWEEN ALL INLET AND/OR OUTFALL PIPE(S).
- THE ENDS OF ALL PIPES INSTALLED IN INLETS SHALL BE CUT OFF FLUSH WITH THE INSIDE FACE OF THE INLET WALL.

2				
1				
NO.	DATE	REVISIONS	BY	APP'D
KANSAS DEPARTMENT OF TRANSPORTATION				
SPECIAL TYPE I CURB INLET				
PROJ. NO. 87N-0116-01		SEDGWICK COUNTY		
MID-KANSAS ENGINEERING CONSULTANTS, INC. WICHITA, KANSAS				
DESIGNED BY: TM	CHECKED BY: TM			
DRAWN BY: WJW	DATE: DEC. 1998		SHEET 41 OF 110	