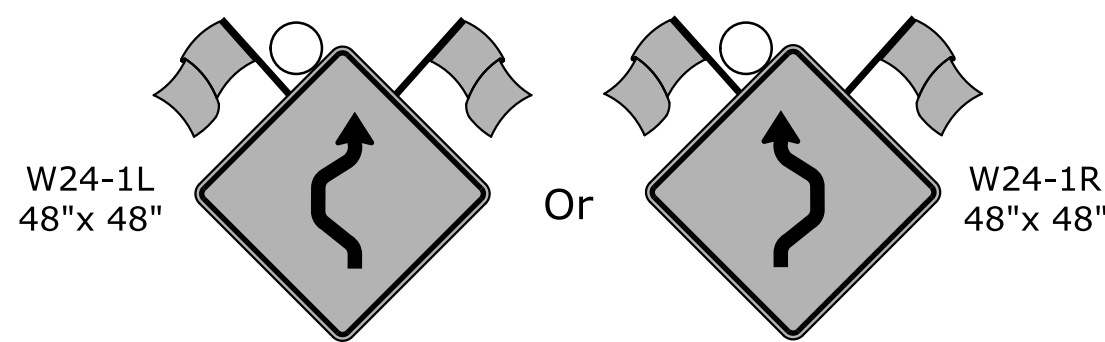
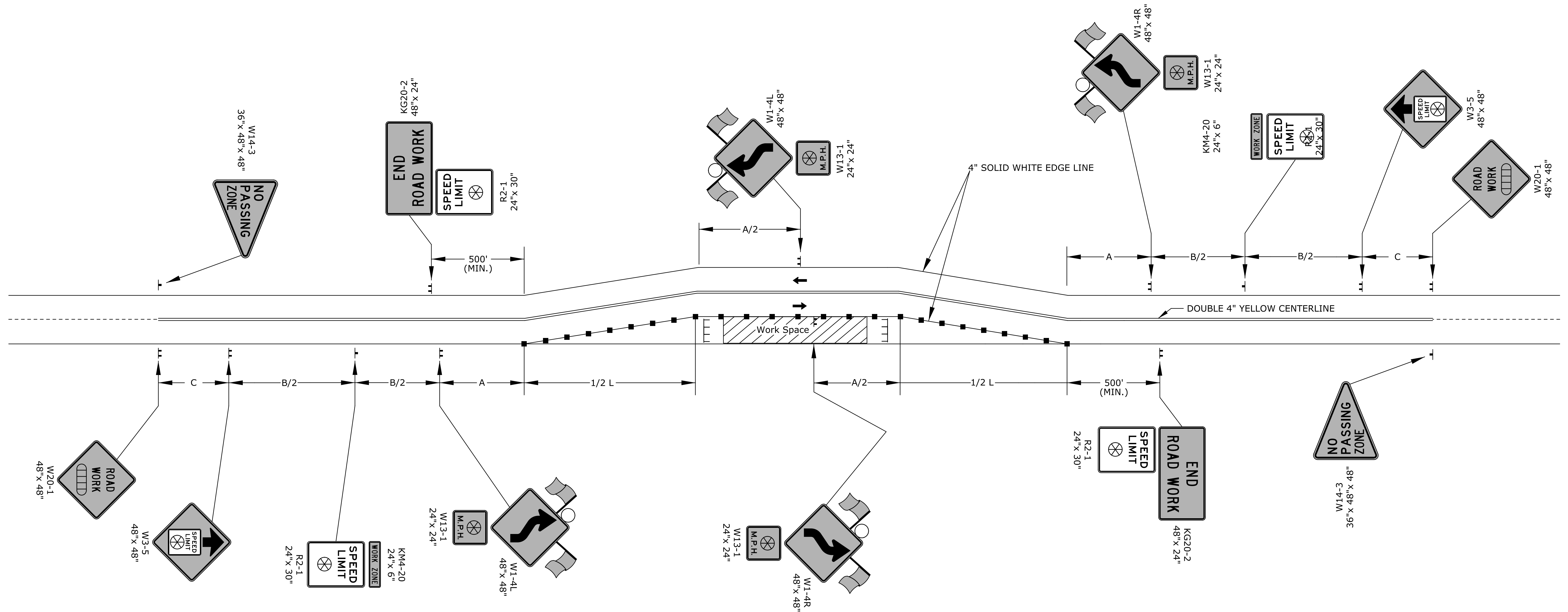


STATE	PROJECT NO.	YEAR	SHEET NO.	TOTAL SHEETS
KANSAS	472-85210	2015	26	28



One W24-1 may be used per approach where the tangent distance between two reverse curves is less than 600 ft. If used, use in place of the first W1-4 and eliminate the second.



Plotted : 05-OCT-2015 13:09

Drawn By : AJDINKEL
File : TC-TE724.dgn

- Channelizing device
- ⊥ Type 3 barricades
- ▨ Ahead, 1500 ft, or 1 mile
- ⊗ Speed to be determined by the Engineer
- Type "A" low intensity warning light

KANSAS DEPARTMENT OF TRANSPORTATION				
TRAFFIC CONTROL LANE SHIFT				
TE724				
NO.	DATE	REVISIONS	BY	APP'D
DESIGNED R.W.B./DETAILED R.W.B./QUANTITIES R.W.B./TRACED KRISTINO ERICKSEN				
DESIGN CK. DETAIL CK. QUAN. CK. TRACE CK.				