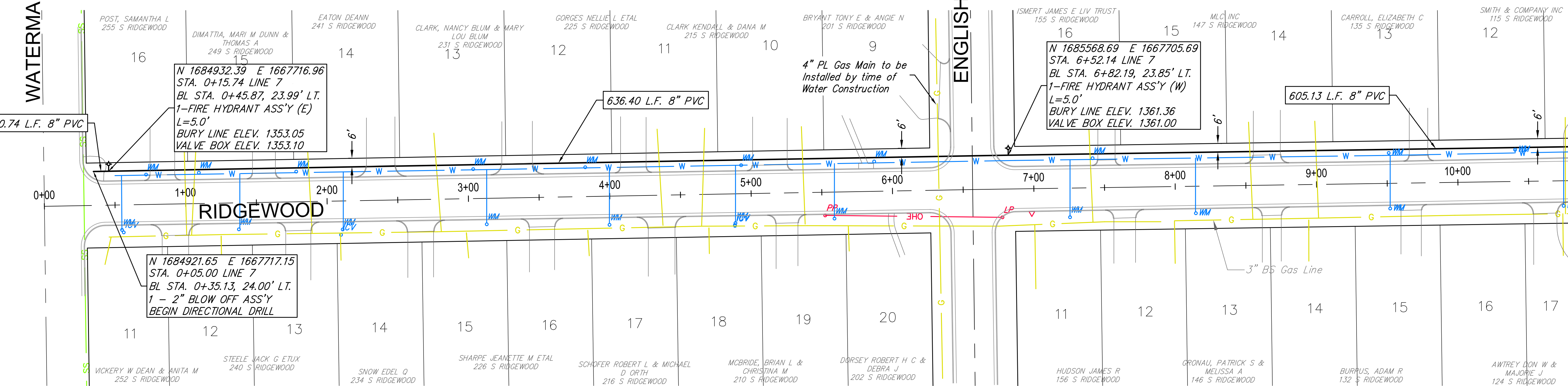


WATERMAN

ENGLISH

Match Line Sta. 10+50



N 1684932.39 E 1667716.96
STA. 0+15.74 LINE 7
BL STA. 0+45.87, 23.99' LT.
1-FIRE HYDRANT ASS'Y (E)
L=5.0'
BURY LINE ELEV. 1353.05
VALVE BOX ELEV. 1353.10

636.40 L.F. 8" PVC

4" PL Gas Main to be
Installed by time of
Water Construction

N 1685568.69 E 1667705.69
STA. 6+52.14 LINE 7
BL STA. 6+82.19, 23.85' LT.
1-FIRE HYDRANT ASS'Y (W)
L=5.0'
BURY LINE ELEV. 1361.36
VALVE BOX ELEV. 1361.00

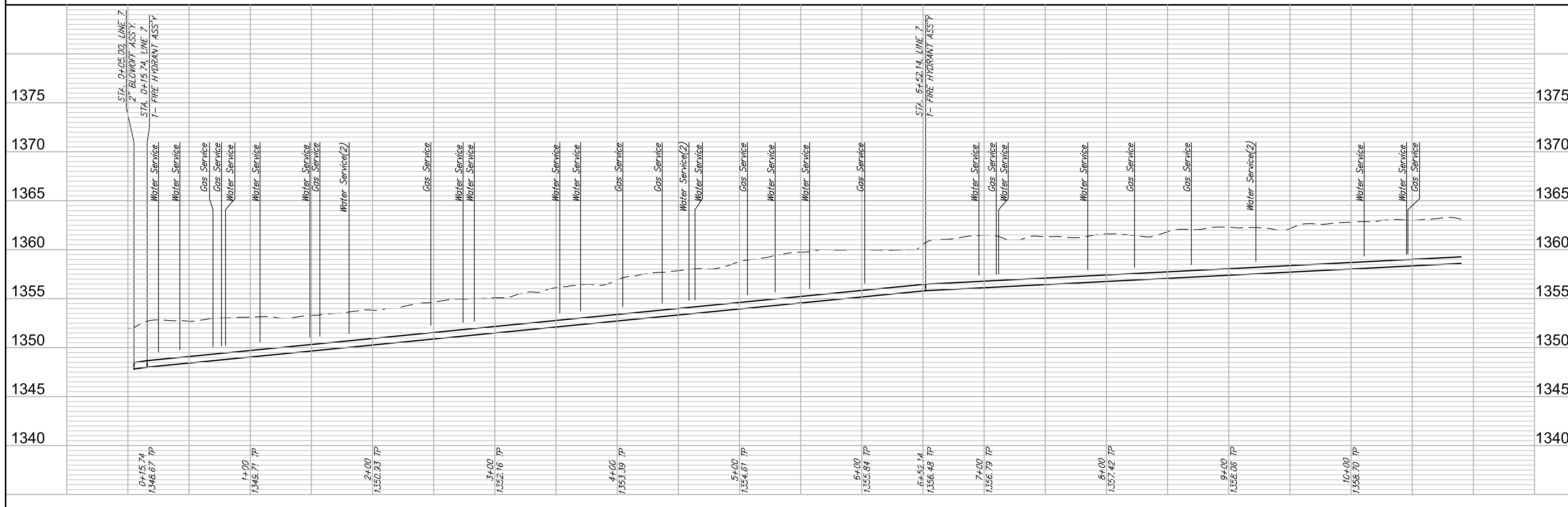
605.13 L.F. 8" PVC

N 1684921.65 E 1667717.15
STA. 0+05.00 LINE 7
BL STA. 0+35.13, 24.00' LT.
1- 2" BLOW OFF ASS'Y
BEGIN DIRECTIONAL DRILL

WATER METER SUMMARY

BL Station	Lt./Rt.	Service (Long or Short)	Address	AS BUILT	BL Station	Lt./Rt.	Service (Long or Short)	Address	AS BUILT
0+54	Rt.	Long			4+93	Lt.	Short		
0+72	Lt.	Short			5+59	Rt.	Long		
1+10	Lt.	Short			5+87	Lt.	Short		
1+37	Rt.	Long			7+25	Rt.	Long		
1+79	Lt.	Short			7+42	Lt.	Short		
2+10	Rt.	Long			8+14	Rt.	Long		
3+03	Lt.	Short			9+51	Rt.	Long		
3+12	Rt.	Long			9+51	Lt.	Short		
3+83	Lt.	Short			10+42	Lt.	Short		
3+99	Rt.	Long			10+75	Rt.	Long		
4+88	Rt.	Long							

Existing Pavement, Curb and
Gutter to be Removed and
Replaced as necessary for
construction. No additional
pay shall be made for this
work, Subsidiary to other
pay items.



**WATER MAIN REPLACEMENT
RIDGEWOOD - LINE 7**
Wichita, Kansas

PROJECT NUMBER 448-90611	REVISION 01/07/2015
DRAWING FILE P122 Engineering Base	DATE 09/29/2015
RA/EJG	RA/DRS
PROJECT NUMBER 448-90611	REVISION 01/07/2015
DRAWING FILE P122 Engineering Base	DATE 09/29/2015
RA/EJG	RA/DRS

RB JOB
4227VV
SHEET
22
OF
40