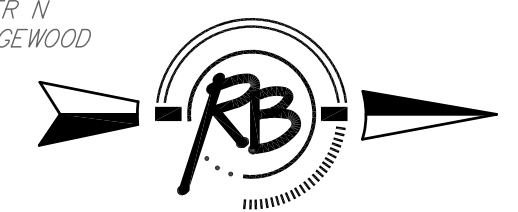


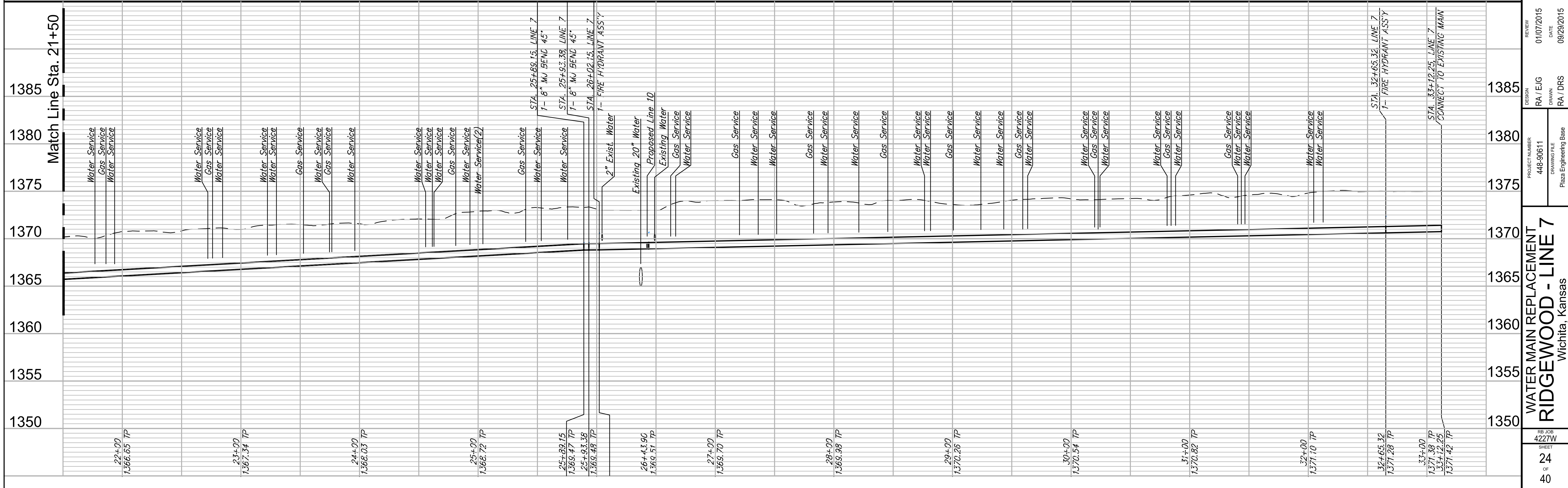
WATER METER SUMMARY

BL Station	Lt./Rt.	Service (Long or Short)	Address	AS BUILT	BL Station	Lt./Rt.	Service (Long or Short)	Address	AS BUILT
22+06	Rt.	Long			27+66	Lt.	Short		
22+23	Lt.	Short			27+81	Rt.	Long		
23+02	Rt.	Long			28+25	Rt.	Long		
23+15	Lt.	Short			28+50	Lt.	Short		
23+52	Lt.	Short			29+07	Rt.	Long		
23+58	Rt.	Long			29+11	Lt.	Short		
24+04	Lt.	Short			29+54	Lt.	Short		
24+25	Rt.	Long			29+72	Rt.	Long		
24+85	Lt.	Short			29+94	Lt.	Short		
24+91	Lt.	Short			30+49	Rt.	Long		
24+91	Rt.	Long			30+55	Lt.	Short		
25+23	Lt.	Short			31+10	Lt.	Short		
25+33	Lt.	Short			31+17	Rt.	Long		
25+33	Rt.	Long			31+72	Rt.	Long		
25+83	Lt.	Short			31+76	Lt.	Short		
26+05	Rt.	Long			32+34	Rt.	Long		
26+46	Lt.	Long			32+43	Lt.	Short		
26+96	Rt.	Long							



Existing Pavement, Curb and Gutter to be Removed and Replaced as necessary for construction. No additional pay shall be made for this work, Subsidiary to other pay items.

* Meter for house at 301 N. Ridgewood is currently approximately 65' West of intersection and connected to the 2" main along 2nd Street that is to be abandoned. It will need to be reconnected to New 8" main along Ridgewood.



RUGGLES & BOHM

 PROFESSIONAL ENGINEERS

PROJECT NUMBER: 448-90611
 DRAWING FILE: C:\ENGINEERING\Bases

REGION: RA/EJG
 DRAWN: RA/DRS

REVIEW: 01/07/2015
 DATE: 09/29/2015

**WATER MAIN REPLACEMENT
 RIDGEWOOD - LINE 7**
 Wichita, Kansas

SHEET: 24 OF 40