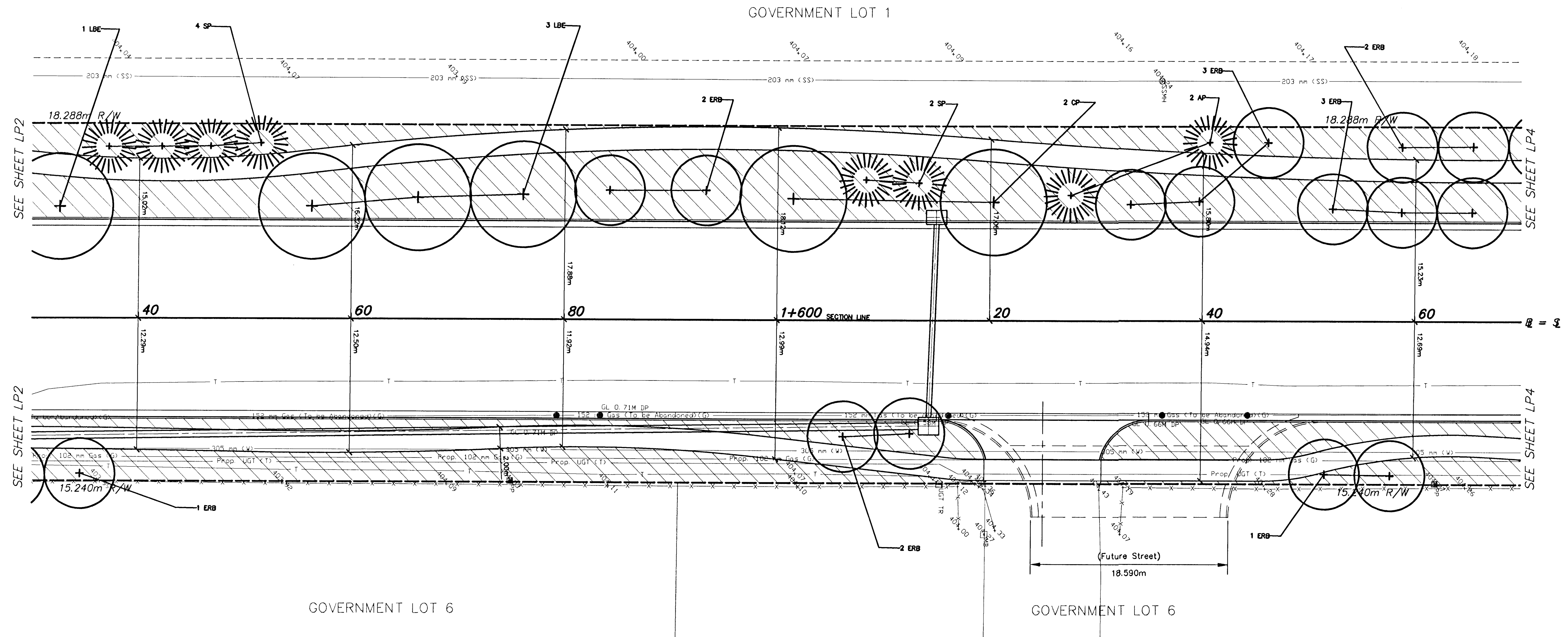
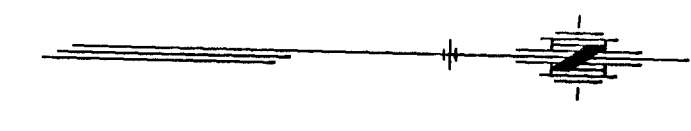


| FHWA REG NO. | STATE | PROJECT NO. | YEAR | SHEET NO | TOTAL SHEETS |
|--------------|--------|-------------|------|----------|--------------|
| 7 | KANSAS | 87N-0116-01 | 1999 | 60 | 110 |

| | |
|--------------------|------|
| BY | DATE |
| | |
| REFERENCES NOTED | |
| REFERENCES CHECKED | |



Legend

Area designated for turf seeding

| | | | | |
|---|------|-------------------|-----------|-----------------|
| 2 | | | | |
| 1 | 7/99 | PAVEMENT WIDENING | WNJ | DCH |
| NO. | DATE | REVISIONS | BY | APP'D |
| KANSAS DEPARTMENT OF TRANSPORTATION LANDSCAPE PLANTING PLAN MERIDIAN AVE. STA. 1+530 TO STA. 1+690 PROJ. NO. 87N-0116-01 SEDGWICK COUNTY MID-KANSAS ENGINEERING CONSULTANTS, INC. WICHITA, KANSAS | | | | |
| DESIGNED BY: | SMH | CHECKED BY: | TDM | |
| DRAWN BY: | SMH | DATE: | DEC. 1998 | SHEET 60 OF 110 |