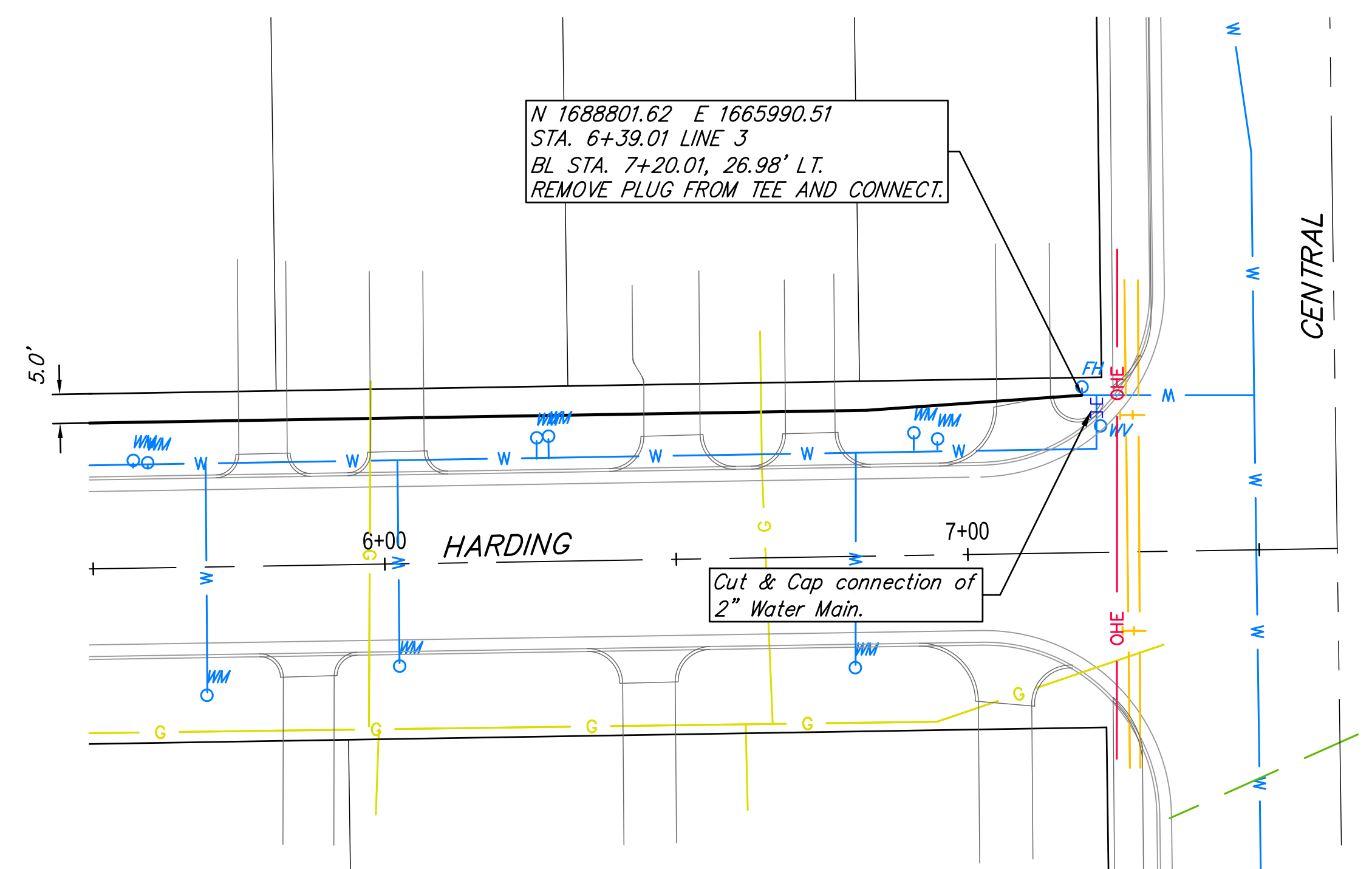
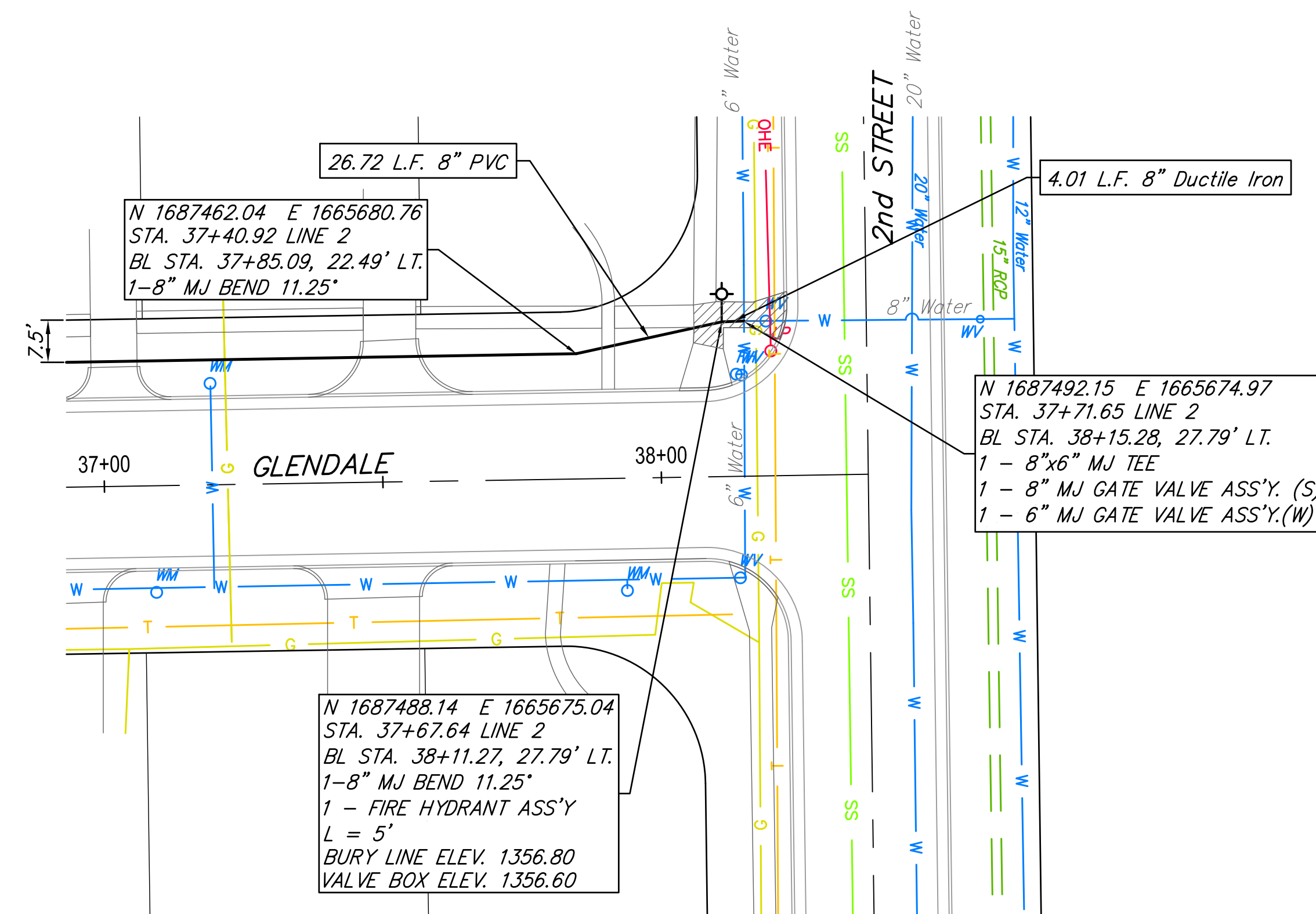


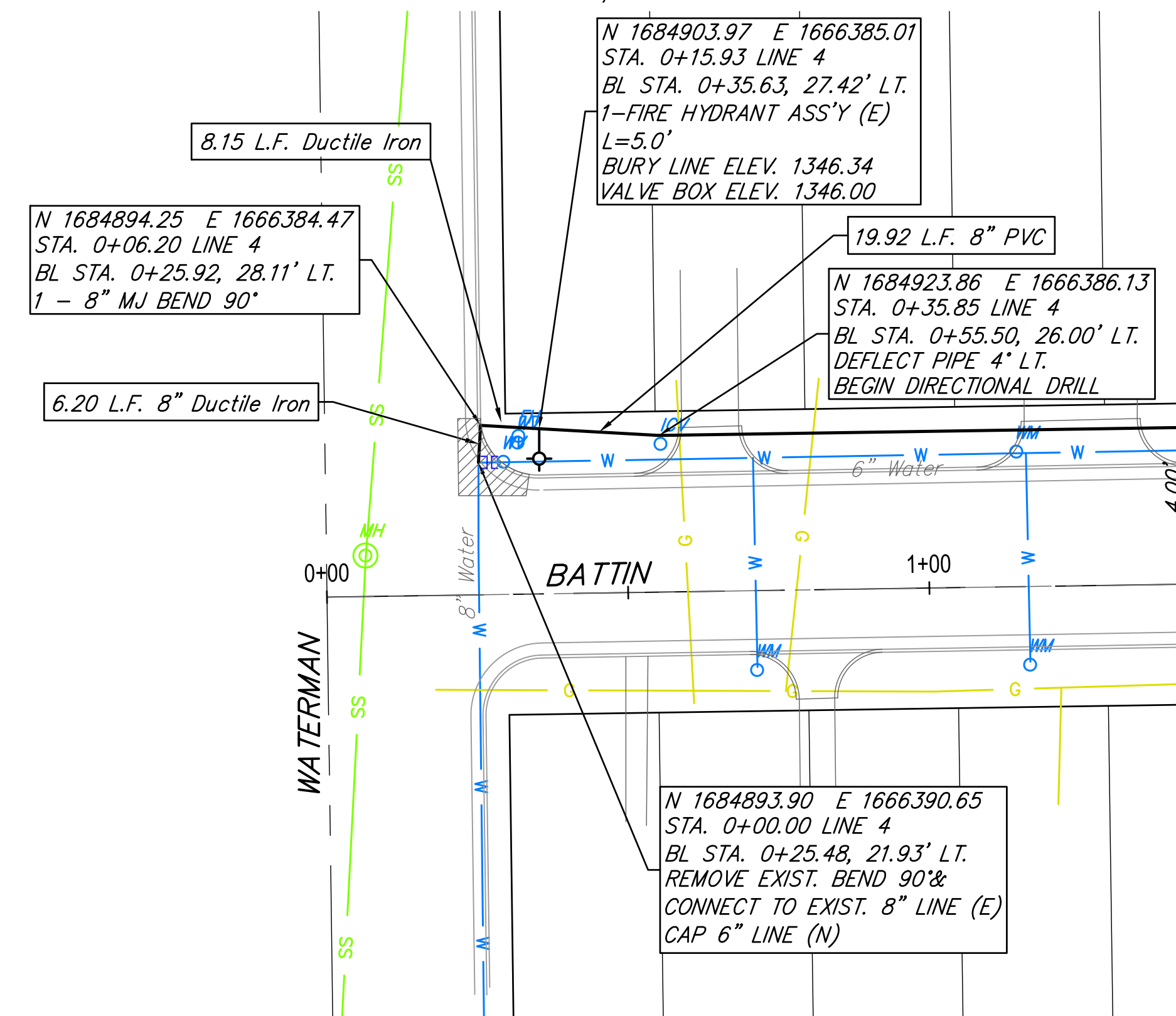
**GLENDALE & DOUGLAS DETAIL**  
LINE 2, PAGE 10, & LINE 9A, PAGE 27



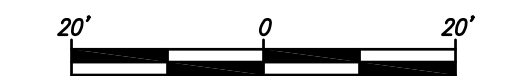
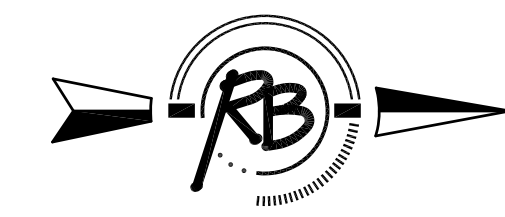
**HARDING & CENTRAL AVE. DETAIL**  
LINE 3, PAGE 12



**GLENDALE & 2nd STREET DETAIL**  
LINE 2, PAGE 11



**BATTIN & WATERMAN DETAIL**  
LINE 4, PAGE 13



Existing Pavement, Curb and Gutter to be Removed and Replaced as necessary for construction. No additional pay shall be made for this work, Subsidiary to other pay items.

<b>WATER MAIN REPLACEMENT CONNECTION DETAILS</b>	
	<b>RUGGLES &amp; BOHM</b> <small>ENGINEERING   SURVEYING   LANDSCAPE ARCHITECTURE   GOVERNMENT</small> <small>924 NORTH MAIN WICHITA, KANSAS 67203 P (316) 264-8008 F (316) 264-4021 WWW.RUGGLESANDBOHM.COM</small>
<small>PROJECT NUMBER</small> 448-90611	<small>RB JOB NO.</small> 4227W
<small>DWG. SCALE</small> 1" = 20'	<small>DATE</small> 09/29/2015 <small>DESIGN</small> RA / EJC <small>DRAWN</small> RA / DRS <small>REVIEW</small> 01/07/2015 <small>SHEET</small> 33 <small>OF</small> 40
<small>Plaza Engineering Base [CONNECTION DETAILS]</small>	