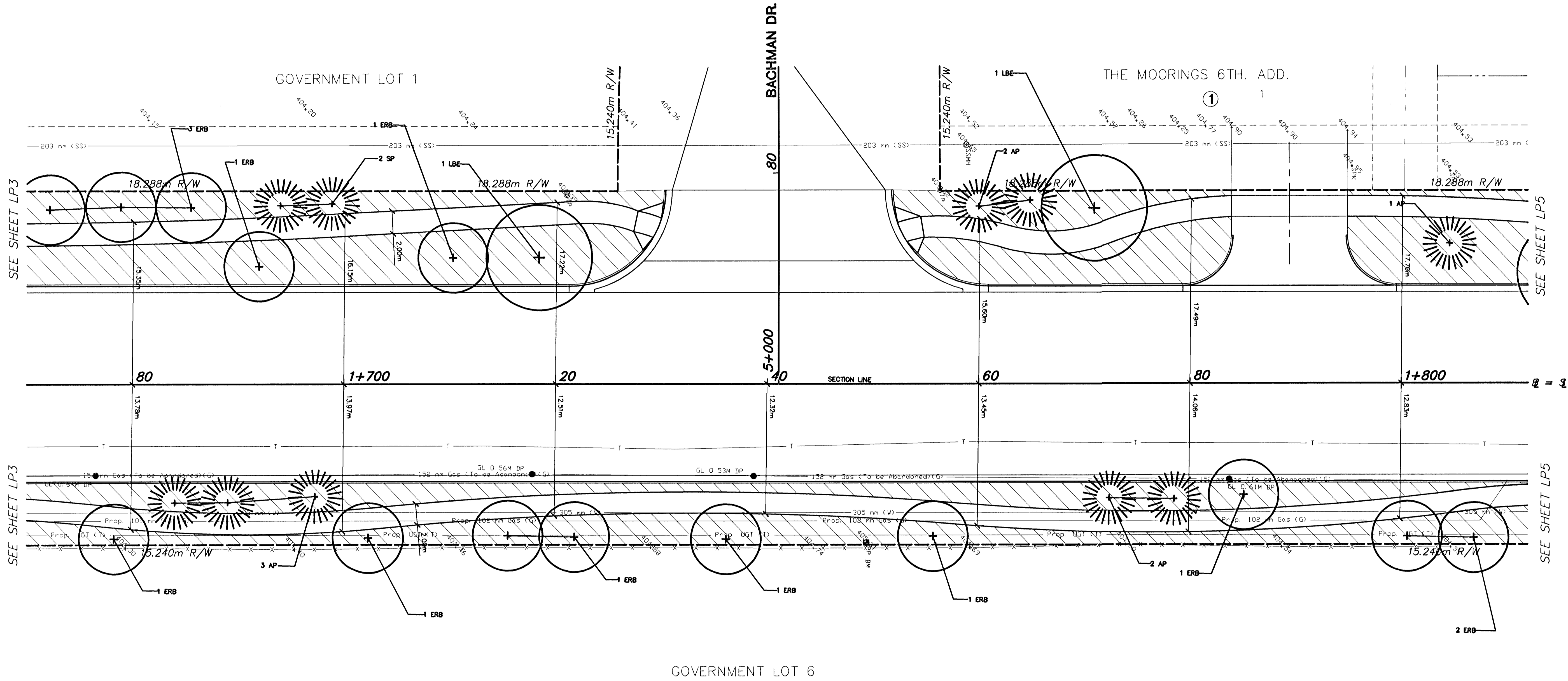


FHWA REG NO.	STATE	PROJECT NO.	YEAR	SHEET NO.	TOTAL SHEETS
7	KANSAS	87N-0116-01	1999	61	110

BY	DATE
REFERENCES NOTED	
REFERENCES CHECKED	



KEY	QTY.	COMMON NAME	BOTANICAL NAME	SIZE	CONDITION
LARGE DECIDUOUS TREES					
LBE	25	LACEBARK ELM	<i>Ulmus parvifolia</i>	2" to 2 1/2" cal.	Balled-in-Burlap
THL	13	THORNLESS HONEYLOCUST	<i>Gleditsia triacanthos 'Shademaster'</i>	2" to 2 1/2" cal.	Balled-in-Burlap
CP	15	CHINESE PISTACHE	<i>Platanus chinensis</i>	2" to 2 1/2" cal.	Balled-in-Burlap
SMALL TO MEDIUM DECIDUOUS TREES					
ERB	139	EASTERN REDBUD	<i>Cercis ranifolia</i>	2" to 2 1/2" cal.	Balled-in-Burlap
SSC	43	SPRING SNOW FLOWERING CRABAPPLE	<i>Malus species 'Spring Snow'</i>	2" to 2 1/2" cal.	Balled-in-Burlap
EVERGREEN TREES					
AP	54	AUSTRIAN PINE	<i>Pinus nigra</i>	6'	Balled-in-Burlap
SP	32	SCOTCH PINE	<i>Pinus sylvestris</i>	6'	Balled-in-Burlap

Legend

Area designated for turf seeding

2					
1	7/99	PAVEMENT WIDENING	WNJ	DCH	
NO.	DATE	REVISIONS	BY	APP'D	
KANSAS DEPARTMENT OF TRANSPORTATION LANDSCAPE PLANTING PLAN MERIDIAN AVE. STA. 1+690 TO STA. 1+810 PROJ. NO. 87N-0116-01 SEDGWICK COUNTY MID-KANSAS ENGINEERING CONSULTANTS, INC. WICHITA, KANSAS					
DESIGNED BY:	SMH	CHECKED BY:	TDM		
DRAWN BY:	SMH	DATE:	DEC. 1998	SHEET 61 OF 110	