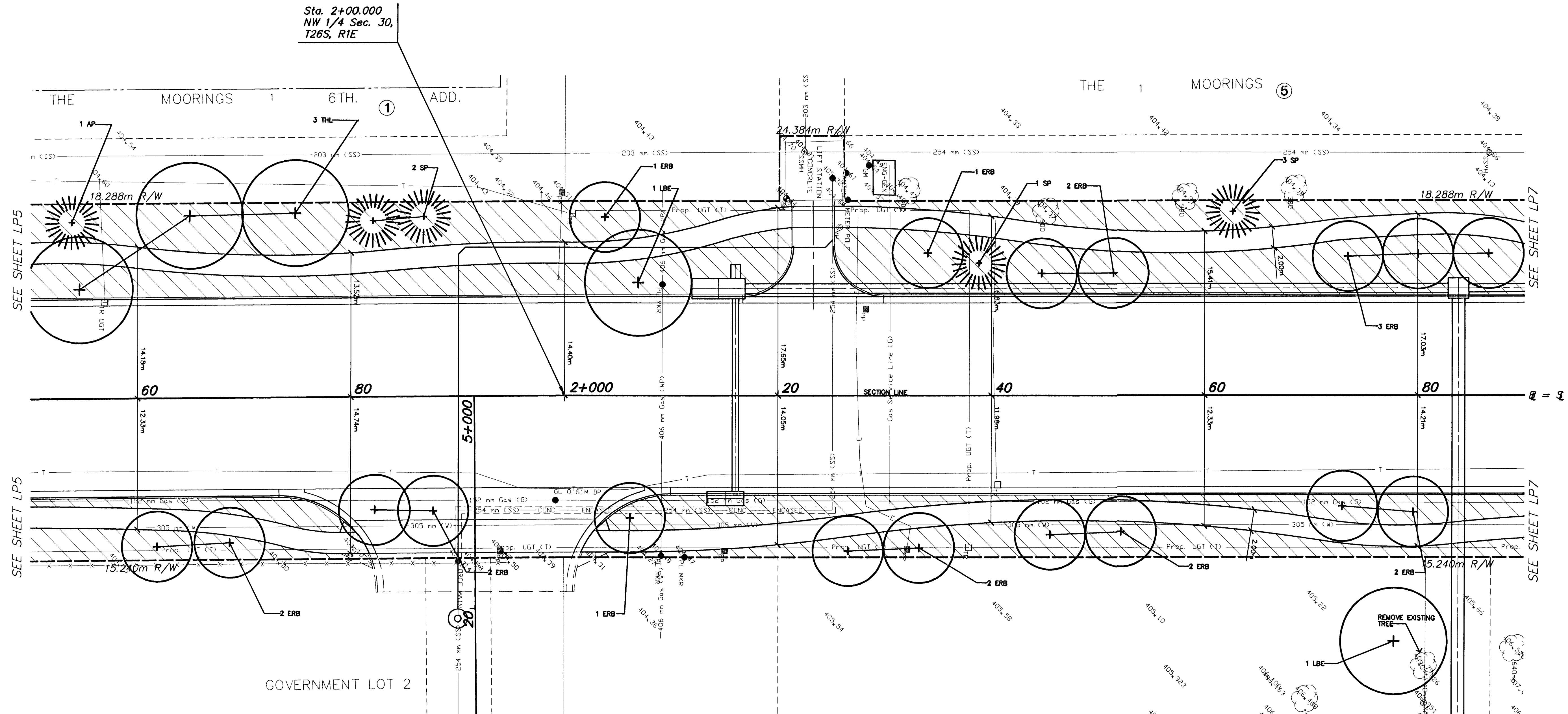


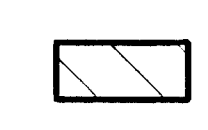
FHWA REG NO.	STATE	PROJECT NO.	YEAR	SHEET NO	TOTAL SHEETS
7	KANSAS	87N-0116-01	1999	63	110

- NW 1/4 Sec. 30, T26S, R1E
 1. 1/2" Bar
 2. PK Nail & Disc in Power Pole. 21.202 m NE
 3. PK Nail & Disc in Power Pole. 16.093 m SE
 4. PK Nail & Disc in Power Pole. 18.940 m W
 5. N=522708.753, E=499391.727

BY	DATE



Legend

 Area designated for turf seeding

Note:
Trees which conflict with other improvements shall be relocated as directed by the Engineer.

2					
1	7/99	PAVEMENT WIDENING	WNJ	DCH	
NO.	DATE	REVISIONS	BY	APP'D	
KANSAS DEPARTMENT OF TRANSPORTATION LANDSCAPE PLANTING PLAN MERIDIAN AVE. STA. 1+950 TO STA. 2+090 PROJ. NO. 87N-0116-01 SEDGWICK COUNTY MID-KANSAS ENGINEERING CONSULTANTS, INC. WICHITA, KANSAS					
DESIGNED BY:	SMH	CHECKED BY:	TDM		
DRAWN BY:	SMH	DATE:	DEC. 1998	SHEET 63 OF 110	