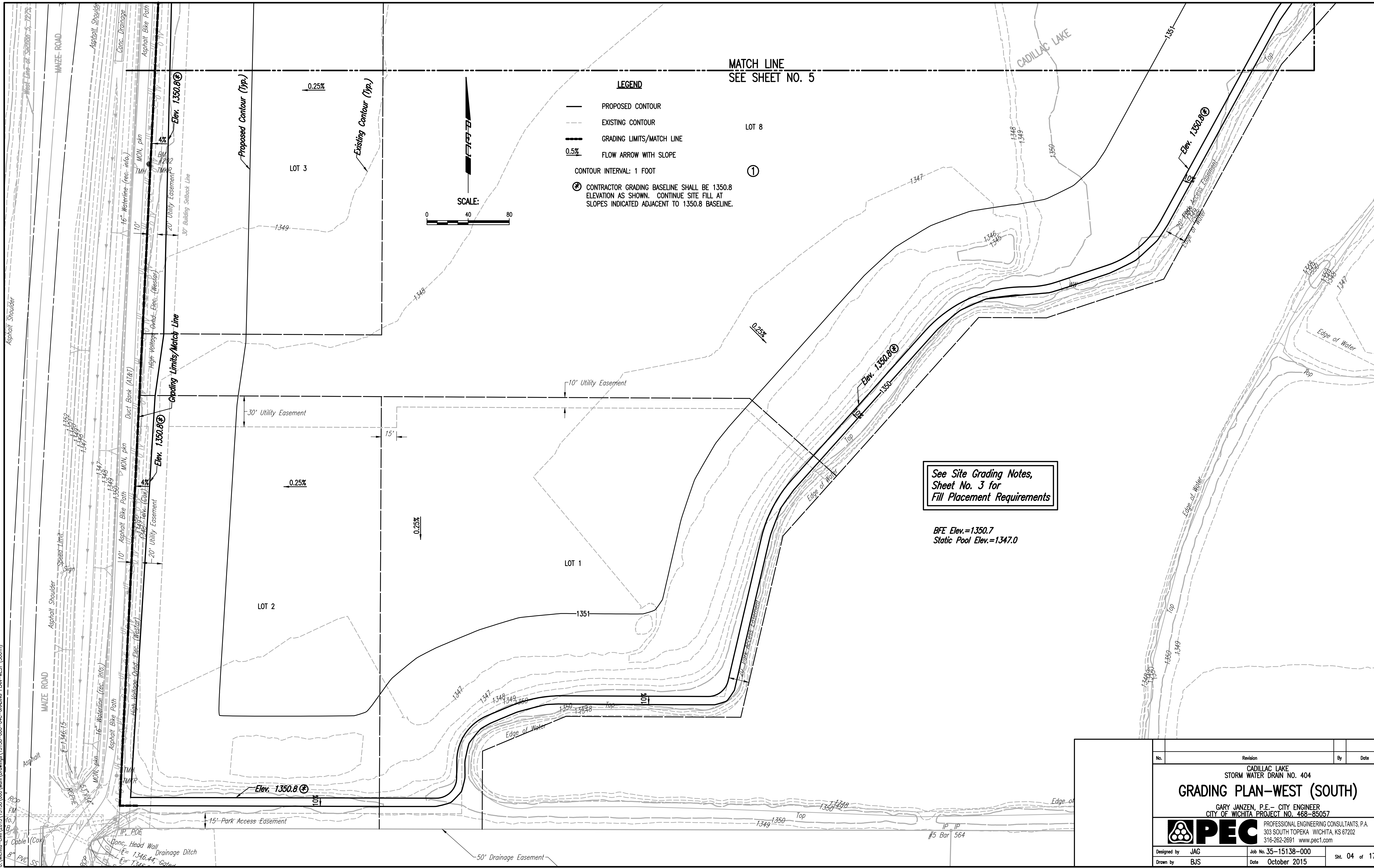


Saved: 10-26-2015 1:21:07 PM by JAG  
 Plot Scale: 1" = 10'-0" (2015) 151.183(000) Mun\Drawings\151.138-000-04C-GRADING PLAN-WEST (SOUTH)  
 U:\Wichita-Civil\2015\151.183(000) Mun\Drawings\151.138-000-04C-GRADING PLAN-WEST (SOUTH)



**LEGEND**

- PROPOSED CONTOUR
- - - EXISTING CONTOUR
- GRADING LIMITS/MATCH LINE
- 0.5% FLOW ARROW WITH SLOPE

CONTOUR INTERVAL: 1 FOOT

⊕ CONTRACTOR GRADING BASELINE SHALL BE 1350.8 ELEVATION AS SHOWN. CONTINUE SITE FILL AT SLOPES INDICATED ADJACENT TO 1350.8 BASELINE.

See Site Grading Notes,  
 Sheet No. 3 for  
 Fill Placement Requirements

BFE Elev.=1350.7  
 Static Pool Elev.=1347.0

No.	Revision	By	Date
CADILLAC LAKE STORM WATER DRAIN NO. 404 <b>GRADING PLAN-WEST (SOUTH)</b> GARY JANZEN, P.E. - CITY ENGINEER CITY OF WICHITA PROJECT NO. 468-85057			
		PROFESSIONAL ENGINEERING CONSULTANTS, P.A. 303 SOUTH TOPEKA WICHITA, KS 67202 316-262-2691 www.pec1.com	
Designed by	JAG	Job No.	35-15138-000
Drawn by	BJS	Date	October 2015
			Sht. 04 of 17