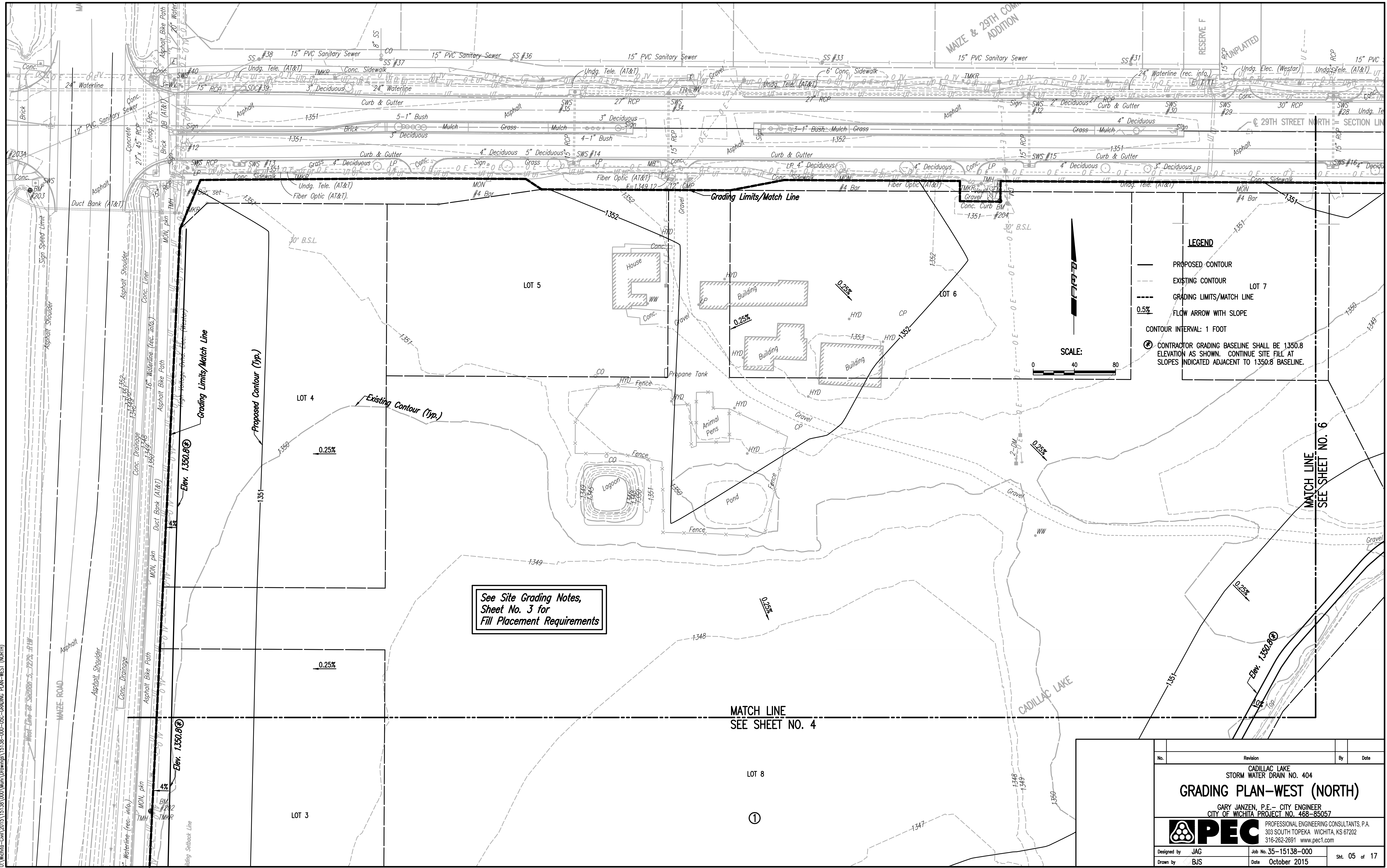


Saved: 10-26-2015 1:23:36 PM by JAG
 Plot Scale: 1" = 10'-0" 10-26-2015 3:04:42 PM by JAG
 U:\Projects-Civil\2015\15138\Drawings\15138-000-05C-GRADING PLAN-WEST (NORTH)



See Site Grading Notes,
 Sheet No. 3 for
 Fill Placement Requirements

LEGEND

- PROPOSED CONTOUR
- - - EXISTING CONTOUR
- - - GRADING LIMITS/MATCH LINE
- 0.5% FLOW ARROW WITH SLOPE
- CONTOUR INTERVAL: 1 FOOT
- ⊕ CONTRACTOR GRADING BASELINE SHALL BE 1350.8 ELEVATION AS SHOWN. CONTINUE SITE FILL AT SLOPES INDICATED ADJACENT TO 1350.8 BASELINE.

No.	Revision	By	Date
CADILLAC LAKE STORM WATER DRAIN NO. 404 GRADING PLAN-WEST (NORTH) GARY JANZEN, P.E. - CITY ENGINEER CITY OF WICHITA PROJECT NO. 468-85057			
PROFESSIONAL ENGINEERING CONSULTANTS, P.A. 303 SOUTH TOPEKA WICHITA, KS 67202 316-262-2691 www.pec1.com			
Designed by	JAG	Job No. 35-15138-000	Sht. 05 of 17
Drawn by	BJS	Date October 2015	