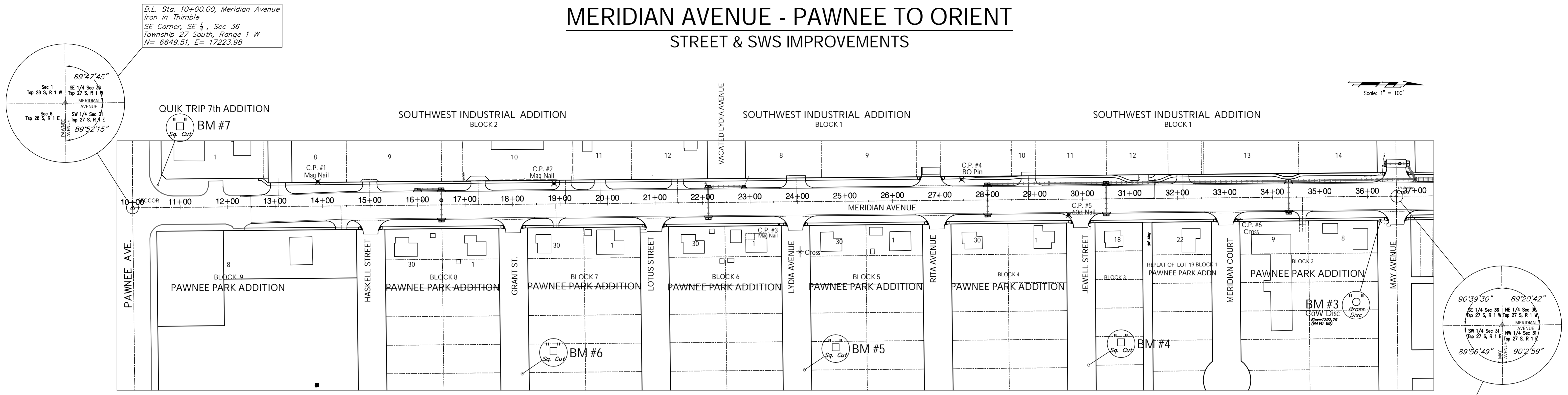


REGION NO.	STATE	PROJECT NO.	FISCAL YEAR	SHEET NO.	TOTAL SHEETS
7	KANSAS	087-N-0593-01	2015	2	153

MERIDIAN AVENUE - PAWNEE TO ORIENT

STREET & SWS IMPROVEMENTS



B.L. Sta. 10+00.00, Meridian Avenue
Iron in Thimble
SE Corner, SE 1/4, Sec 36
Township 27 South, Range 1 W
N= 6649.51, E= 17223.98

B.L. Sta. 36+60.88, Meridian Avenue
Cross
NE Corner, SE 1/4, Sec 36
Township 27 South, Range 1 W
N= 9310.29, E= 17199.53

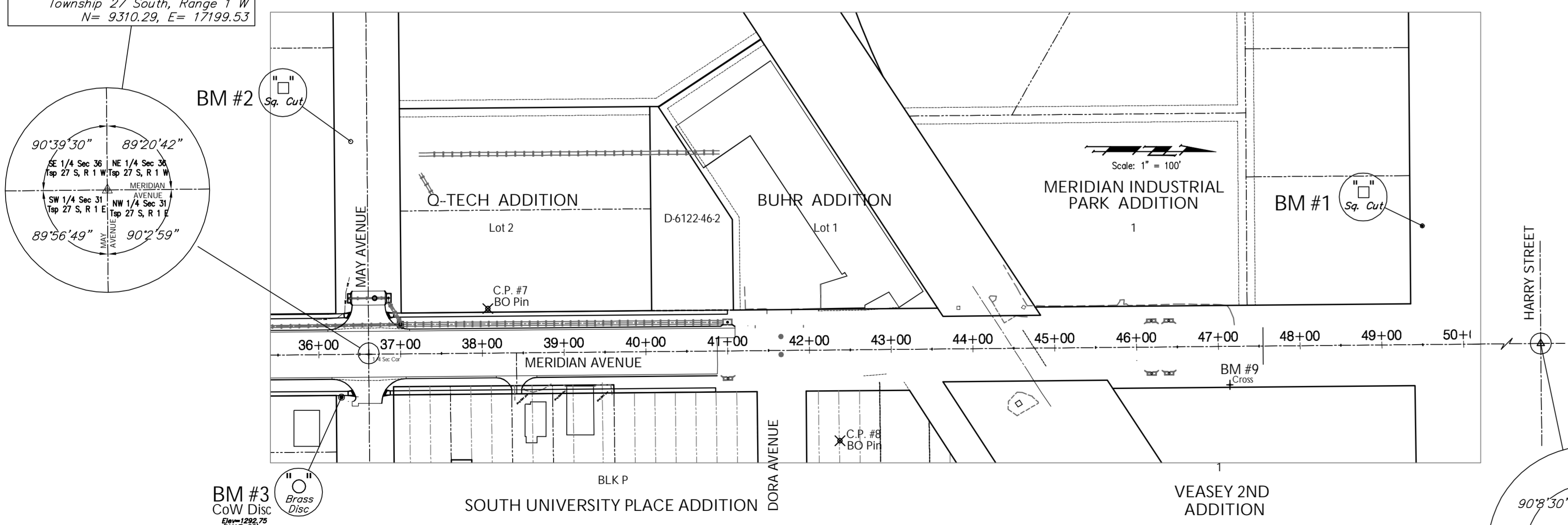
BENCHMARKS:

CONTROL POINTS

B.L. Sta. 36+60.88, Meridian Avenue
Cross
NE Corner, SE 1/4, Sec 36
Township 27 South, Range 1 W
N= 9310.29, E= 17199.53

- BM #1 - Chiseled "o" on the Top of Curb on the South Side of Esthner Street adjacent to Gas Meter, 145'± West of Centerline of Meridian.
Elev. = 1293.26 (NAVD 88)
- BM #2 - Chiseled "o" on the Top of Curb on the South Side of May Avenue adjacent to Fire Hydrant, 260'± West of Centerline of Meridian.
Elev. = 1292.76 (NAVD 88)
- BM #3 - City of Wichita Benchmark Disc in the Southeast Corner of the Intersection of Meridian and May, 34.5' South and 52.4' East of the Centerline of Both.
Elev. = 1292.75 (NAVD 88)
- BM #4 - Chiseled "o" on the Top of Curb on the North Side of Jewell Street adjacent to Light Pole, 350'± East of Centerline of Meridian.
Elev. = 1291.16 (NAVD 88)
- BM #5 - Chiseled "o" on the Top of Curb on the North Side of Lydia Avenue adjacent to Light Pole, 355'± East of Centerline of Meridian.
Elev. = 1290.29 (NAVD 88)
- BM #6 - Chiseled "o" on the Top of Curb on the North Side of Grant Street adjacent to Light Pole, 358'± East of Centerline of Meridian.
Elev. = 1289.67 (NAVD 88)
- BM #7 - Chiseled "o" City Benchmark in the Northwest Corner of Pawnee and Meridian, 71.1' Northwest of Section Corner and 9.3' South Southwest of Traffic Signal Manhole.
Elev. = 1290.43 (NAVD 88)

- C.P. #1 - Mag Nail
Sta. 13+90.13, 51.11' Lt.
N=7,039.15, E=17,169.29
- C.P. #2 - Mag Nail
Sta. 18+87.63, 43.63' Lt.
N=7,536.71, E=17,172.19
- C.P. #3 - Mag Nail
Sta. 23+60.10, 47.55' Rt.
N=8,009.99, E=17,259.03
- C.P. #4 - Rebar w/ Large Orange Cap
Sta. 27+46.32, 43.89' Lt.
N=8,395.35, E=17,164.04
- C.P. #5 - 60d Nail
Sta. 29+70.93, 32.94' Rt.
N=8,620.66, E=17,238.81
- C.P. #6 - Cross in Sidewalk
Sta. 33+29.39, 46.44' Rt.
N=8,979.23, E=17,249.01
- C.P. #7 - Rebar w/ Large Orange Cap
Sta. 38+06.89, 54.41' Lt.
N=9,455.78, E=17,143.79
- C.P. #8 - Rebar w/ Large Orange Cap
Sta. 42+36.10, 110.95' Rt.
N=9,886.49, E=17,305.22



B.L. Sta. 62+95.39, Meridian Avenue
West Edge of Iron in Thimble
NE Corner, NE 1/4, Sec. 36
Township 27 South, Range 1 W
N= 11944.70, E= 17175.42

Drawing File: E:\Projects\Meridian_Pawnee to Orient\Civil3d\Meridian Base.dwg (Keyshot)
Project No. 0808E186 CAPITAL IMPROVEMENT PROJECT
Design: TPV
Drawn: Sonny
Approved: TPV
Scale: 1" = 100'

PROJECT KEYSHEET

Baughman Company, P.A.
315 Ellis St., Wichita, KS 67211 P 316.262.7271 F 316.262.0149
ENGINEERING | SURVEYING | PLANNING | LANDSCAPE ARCHITECTURE