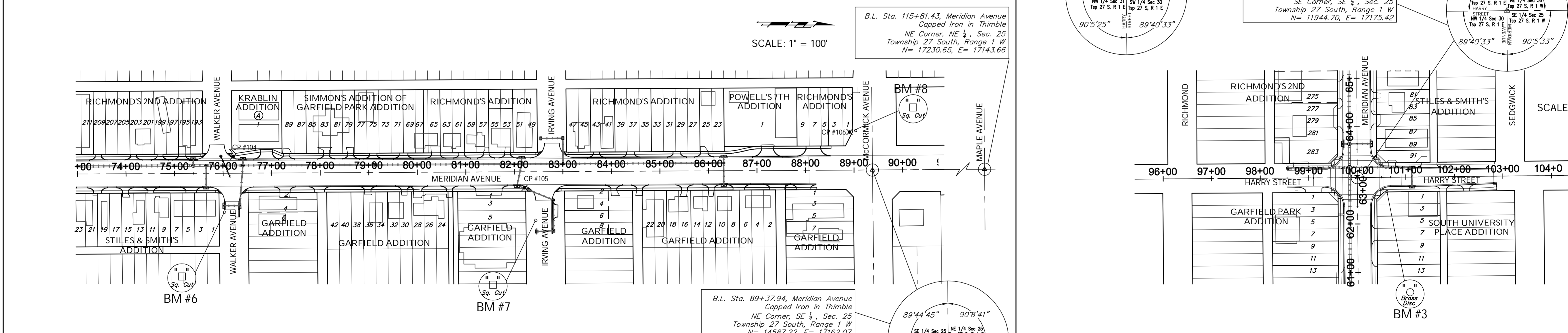
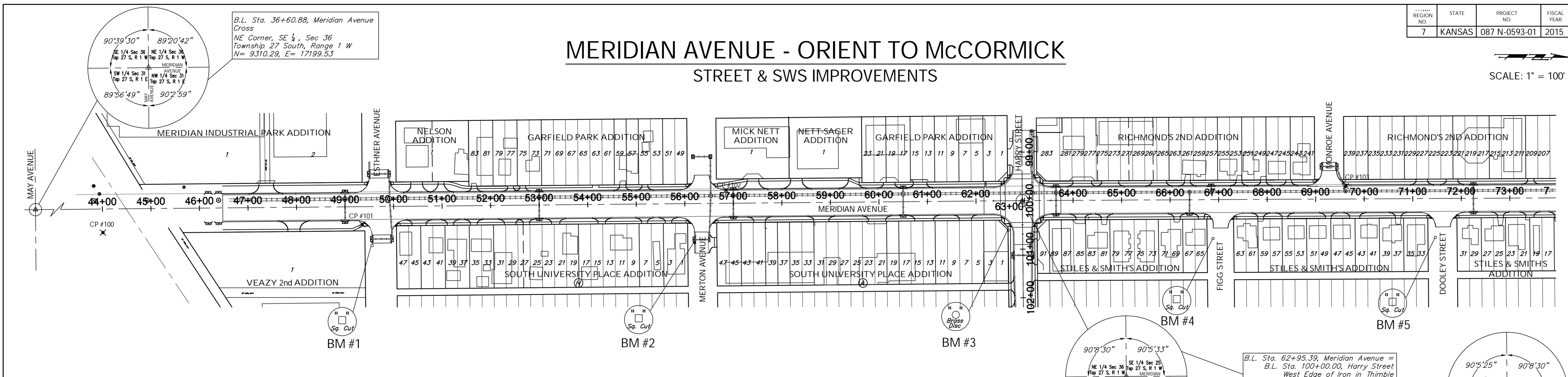


| | | | | | |
|------------|--------|---------------|-------------|-----------|--------------|
| REGION NO. | STATE | PROJECT NO. | FISCAL YEAR | SHEET NO. | TOTAL SHEETS |
| 7 | KANSAS | 087 N-0593-01 | 2015 | 3 | 153 |

MERIDIAN AVENUE - ORIENT TO McCORMICK

STREET & SWS IMPROVEMENTS

SCALE: 1" = 100'



CONTROL POINTS

- C.P. #100 - Rebar
Sta. 44+00.49, 48.51' Lt.
N=10,050.33, E=17,241.25
- C.P. #101 - Rebar
Sta. 49+35.00, 36.37' Rt.
N=10,584.701, E=17,224.23
- C.P. #102 - Rebar
Sta. 56+85.39, 27.38' Lt.
N=11,334.48, E=17,153.62
- C.P. #103 - Rebar
Sta. 69+62.46, 26.46' Lt.
N=12,611.59, E=17,145.59
- C.P. #104 - Rebar
Sta. 76+20.453, 34.57' Lt.
N=13,269.75, E=17,134.16
- C.P. #105 - Rebar
Sta. 82+21.18, 32.99' Rt.
N=13,870.64, E=17,198.68
- C.P. #106 - Mag Nail
Sta. 88+91.11, 78.58' Lt.
N=14,539.99, E=17,083.72

BENCHMARKS:

- BM #1 - Chiseled "b" on the Top of Curb on the South Side of Esthner Avenue, 80'± East of Centerline of Meridian.
Elev. = 1292.64 (NAVD 88)
- BM #2 - Chiseled "b" on the Top of Curb on the South Side of Merton Avenue, 80'± East of Centerline of Meridian.
Elev. = 1293.40 (NAVD 88)
- BM #3 - City of Wichita Benchmark Disc in the Southeast Corner of the Intersection of Meridian and Harry, 29.5' South and 61' East of the Centerline of Both.
Elev. = 1294.17 (NAVD 88)
- BM #4 - Chiseled "b" on the Top of Curb on the South Side of Figg Street, 80'± East of Centerline of Meridian.
Elev. = 1295.08 (NAVD 88)
- BM #5 - Chiseled "b" on the Top of Curb on the South Side of Dooley Street, 80'± East of Centerline of Meridian.
Elev. = 1296.20 (NAVD 88)
- BM #6 - Chiseled "b" on the Top of Curb on the South Side of Walker Street, 80'± East of Centerline of Meridian.
Elev. = 1295.44 (NAVD 88)
- BM #7 - Chiseled "b" on the Top of Curb on the North Side of Irving Avenue, 100'± East of Centerline of Meridian.
Elev. = 1295.86 (NAVD 88)
- BM #8 - Chiseled "b" on West Curb Return on the Southwest Corner of Meridian and McCormick
Elev. = 1297.18 (NAVD 88)

Design: TPV
Drawn: STAFF
Approved: TPV
Scale: NOTED

Project No. 1004-E-93 CAPITAL IMPROVEMENT PROJECT

PROJECT KEYSHEET

MERIDIAN AVENUE - PAWNEE AVENUE TO McCORMICK AVENUE

Baughman Company, P.A.
315 Ellis St., Wichita, KS 67211 P 316.262.7271 F 316.262.0149
ENGINEERING | SURVEYING | PLANNING | LANDSCAPE ARCHITECTURE