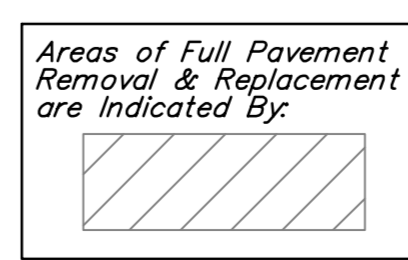
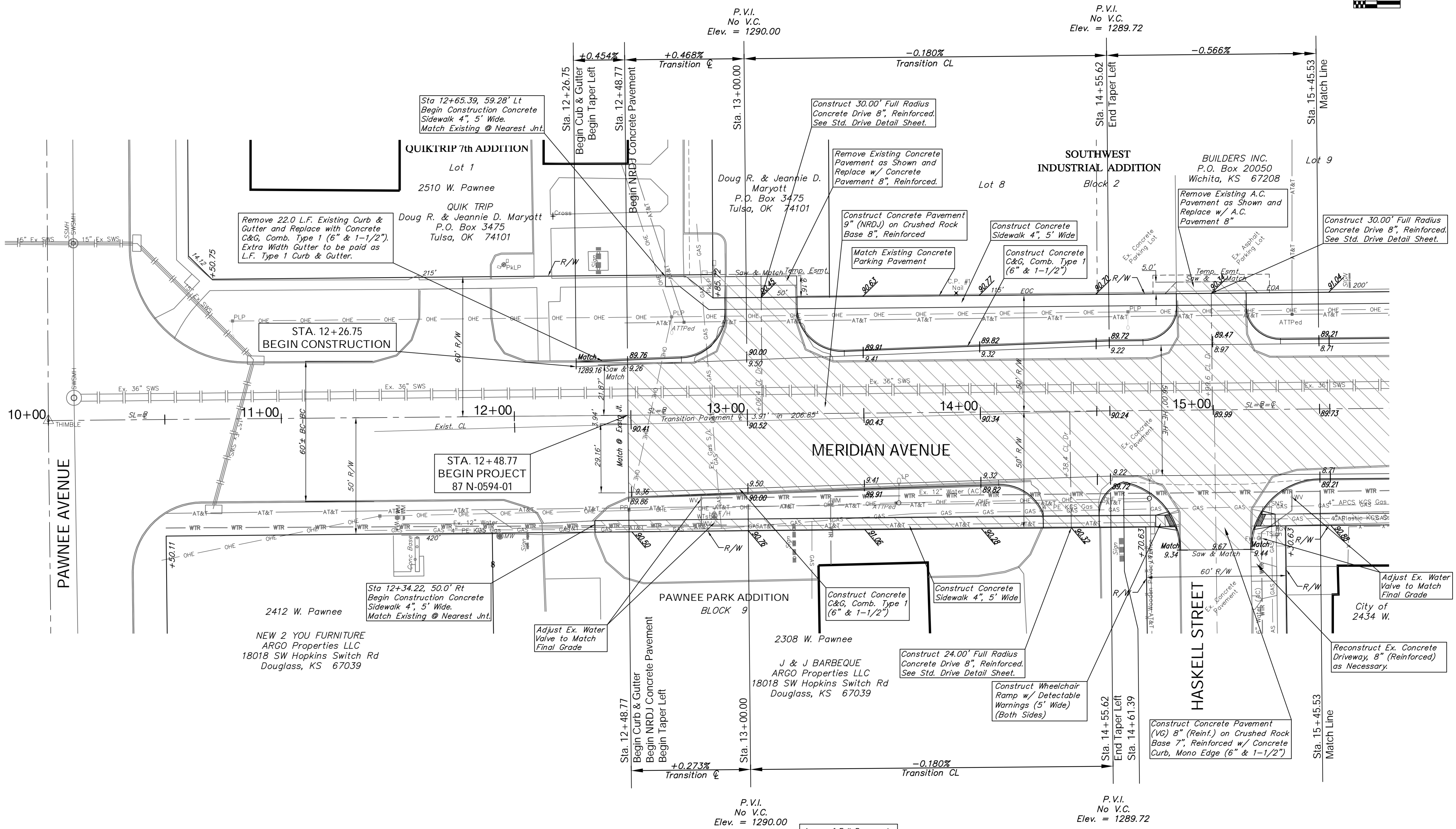
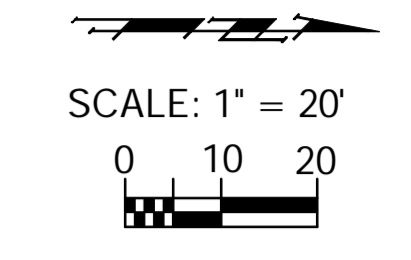


**BENCHMARK:**  
 BM #7 - Chiseled "a" City Benchmark in the Northwest Corner of Pawnee and Meridian, 71.1' Northwest of Section Corner and 9.3' South Southwest of Traffic Signal Manhole Elev. = 1290.43 (NAVD 88)

REGION NO.	STATE	PROJECT NO.	FISCAL YEAR	SHEET NO.	TOTAL SHEETS
7	KANSAS	087 N-0593-01	2015	14	153



Design File: E:\Projects\MeridianPawnee to Orient\Civil\3D\Meridian Base.dwg (Paw 01)  
 Design: TPV  
 Drawn: Sonny  
 Approved: JFB  
 Scale: 1:20  
**MERIDIAN AVENUE PAVING**  
 Sta. 12 + 26.75 to Sta. 15 + 45.53  
 MERIDIAN AVENUE - PAWNEE AVENUE TO MCCORMICK AVENUE

**Baughman Company, P.A.**  
 315 Ellis St. Wichita, KS 67211 P 316.262.7271 F 316.262.0149  
 ENGINEERING | SURVEYING | PLANNING | LANDSCAPE ARCHITECTURE

May 2015  
 SHEET 14 OF 153