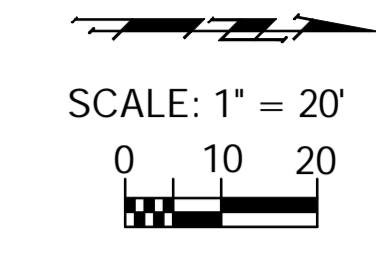
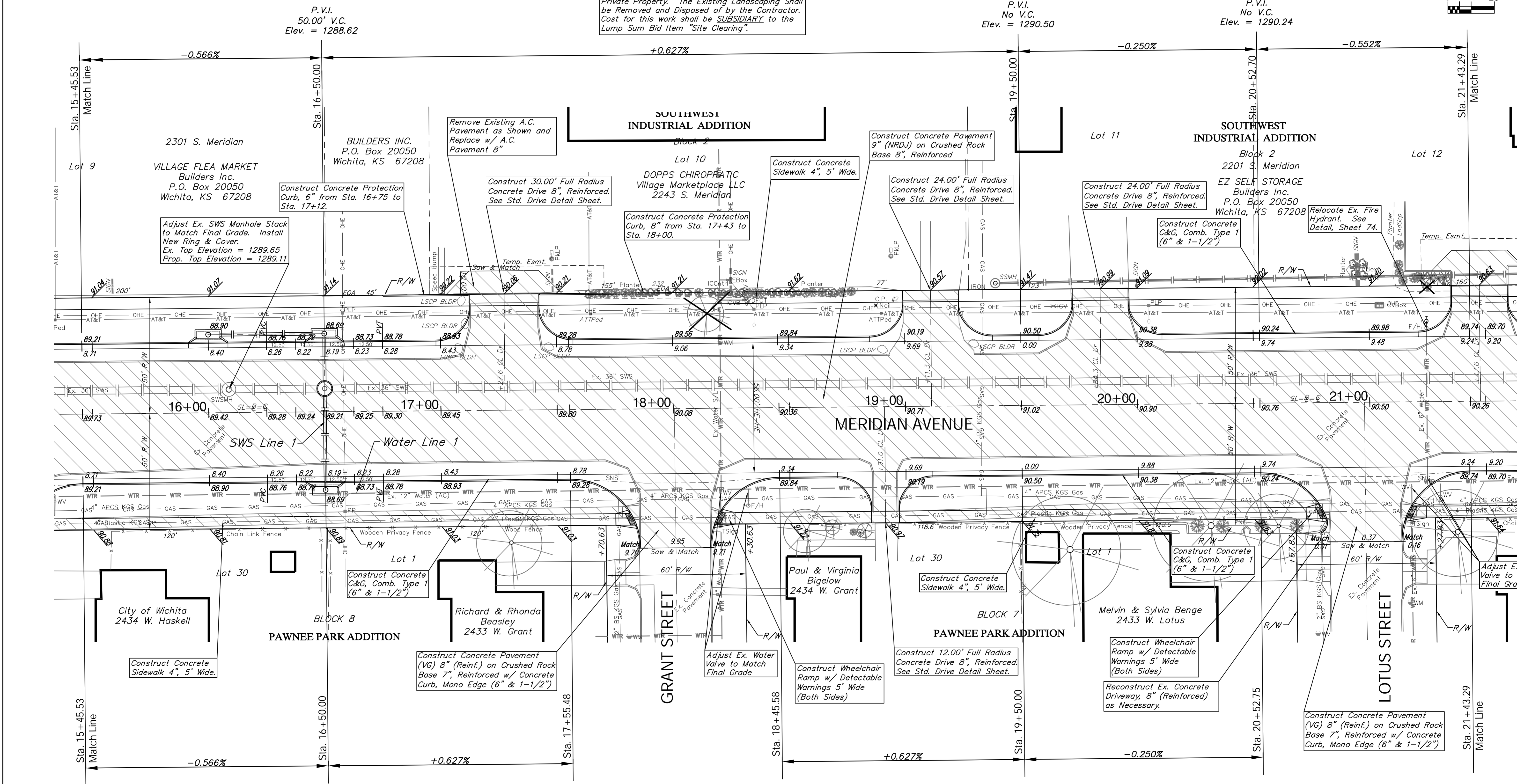


BENCHMARK:
 BM #6 - Chiseled "a" on the Top of Curb on the North Side of Grant Street adjacent to Light Pole, 358'± East of Centerline of Meridian.
 Elev. = 1289.67 (NAVD 88)

REGION NO.	STATE	PROJECT NO.	FISCAL YEAR	SHEET NO.	TOTAL SHEETS
7	KANSAS	087 N-0593-01	2015	15	153



The Contractor Shall Remove the Landscaping Boulders, Irrigation Components, and Yard Hydrant at 2243 S. Meridian and Stockpile on Private Property. The Existing Landscaping Shall be Removed and Disposed of by the Contractor. Cost for this work shall be SUBSIDIARY to the Lump Sum Bid Item "Site Clearing".



PROTECTION CURB					
STA. TO STA. (BASELINE)	ROADWAY	SIDE	HEIGHT	LENGTH (ft.)	
16+75.1 - 17+12.6	Meridian	Lt.	6"	37.5	
17+42.6 - 18+00.0	Meridian	Lt.	6"	57.4	

Note:
 Trees/Shrubs to be removed are marked thus:

Areas of Full Pavement Removal & Replacement are Indicated By:

Design: TPV
 Drawn: Sonny
 Approved: JFB
 Scale: 1:20
 Project No. 0808ET86 CAPITAL IMPROVEMENT PROJECT
MERIDIAN AVENUE PAVING
 Sta. 15+45.33 to Sta. 21+43.29
 MERIDIAN AVENUE - PAWNEE AVENUE to MCCORMICK AVENUE

Baughman Company, P.A.
 315 Ellis St., Wichita, KS 67211 P 316.262.7271 F 316.262.0149
 ENGINEERING | SURVEYING | PLANNING | LANDSCAPE ARCHITECTURE

May 2015
 SHEET 15 OF 153