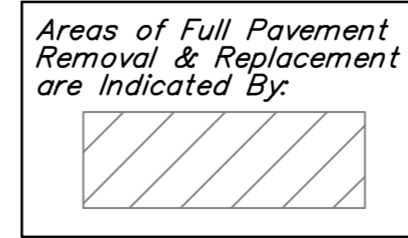
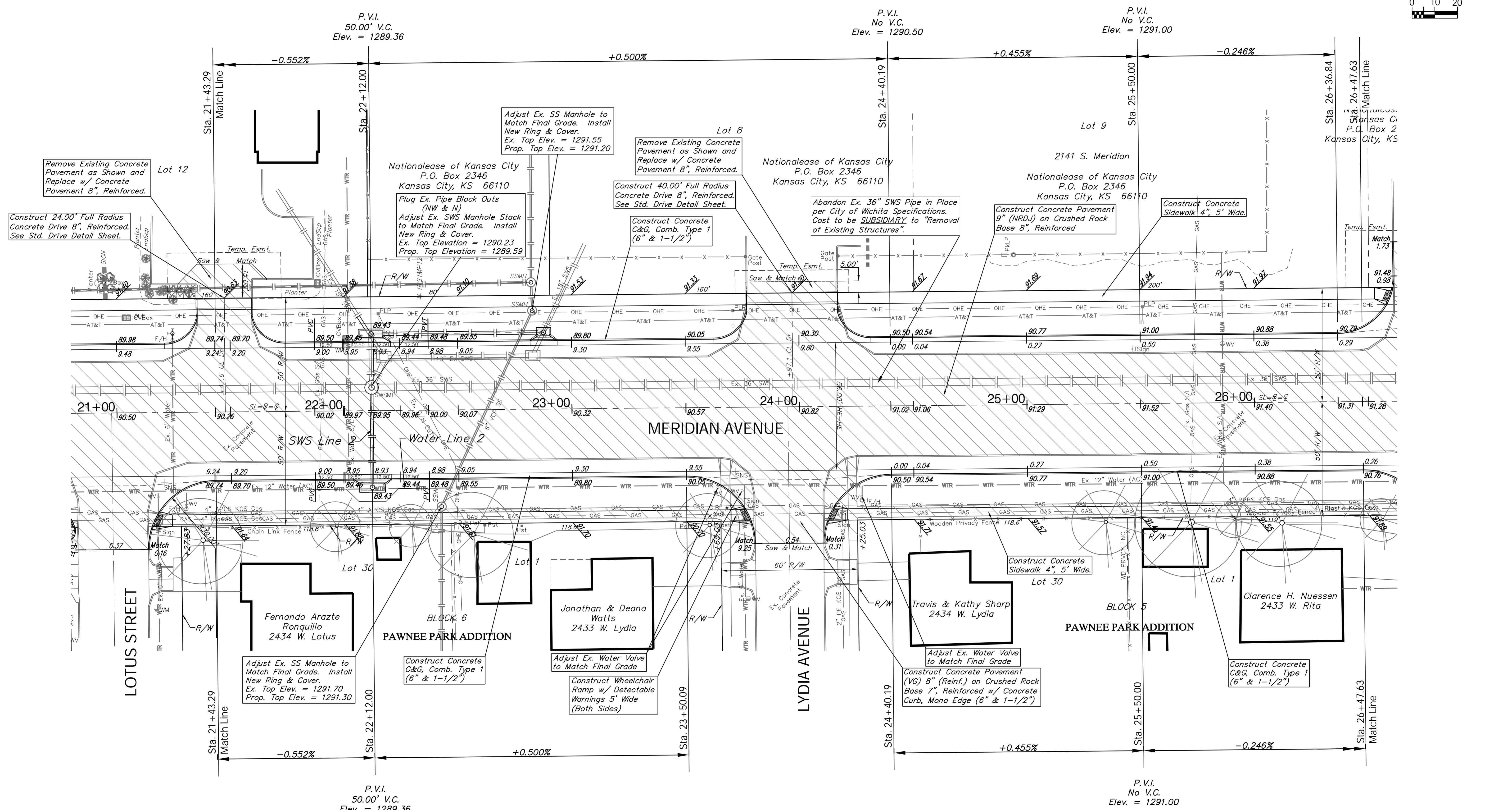
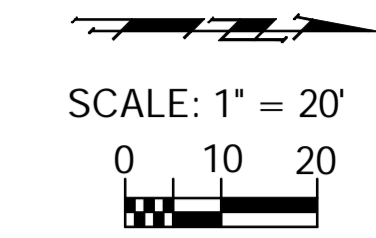


BENCHMARK:
 BM #5 - Chiseled "a" on the Top of Pole on the North Side of Lydia Avenue adjacent to Light Pole, 355'± East of Centerline of Meridian.
 Elev. = 1290.29 (NAVD 88)

REGION NO.	STATE	PROJECT NO.	FISCAL YEAR	SHEET NO.	TOTAL SHEETS
7	KANSAS	087 N-0593-01	2015	16	153



Drawn File: E:\Proj\Meridian-Pawnee to Orient\Civil 3D\Meridian Base.dwg (Pav 03)
 Design: TPV
 Drawn: Sonny
 Approved: JFB
 Scale: 1:20
 Project No. 0808ET86 CAPITAL IMPROVEMENT PROJECT
MERIDIAN AVENUE PAVING
 Sta. 21+43.29 to Sta. 26+47.63
 MERIDIAN AVENUE - PAWNEE AVENUE TO MCCORMICK AVENUE

Baughman Company, P.A.
 315 Ellis St., Wichita, KS 67211 P 316.262.7271 F 316.262.0149
 ENGINEERING | SURVEYING | PLANNING | LANDSCAPE ARCHITECTURE

May 2015
 SHEET 16 OF 153