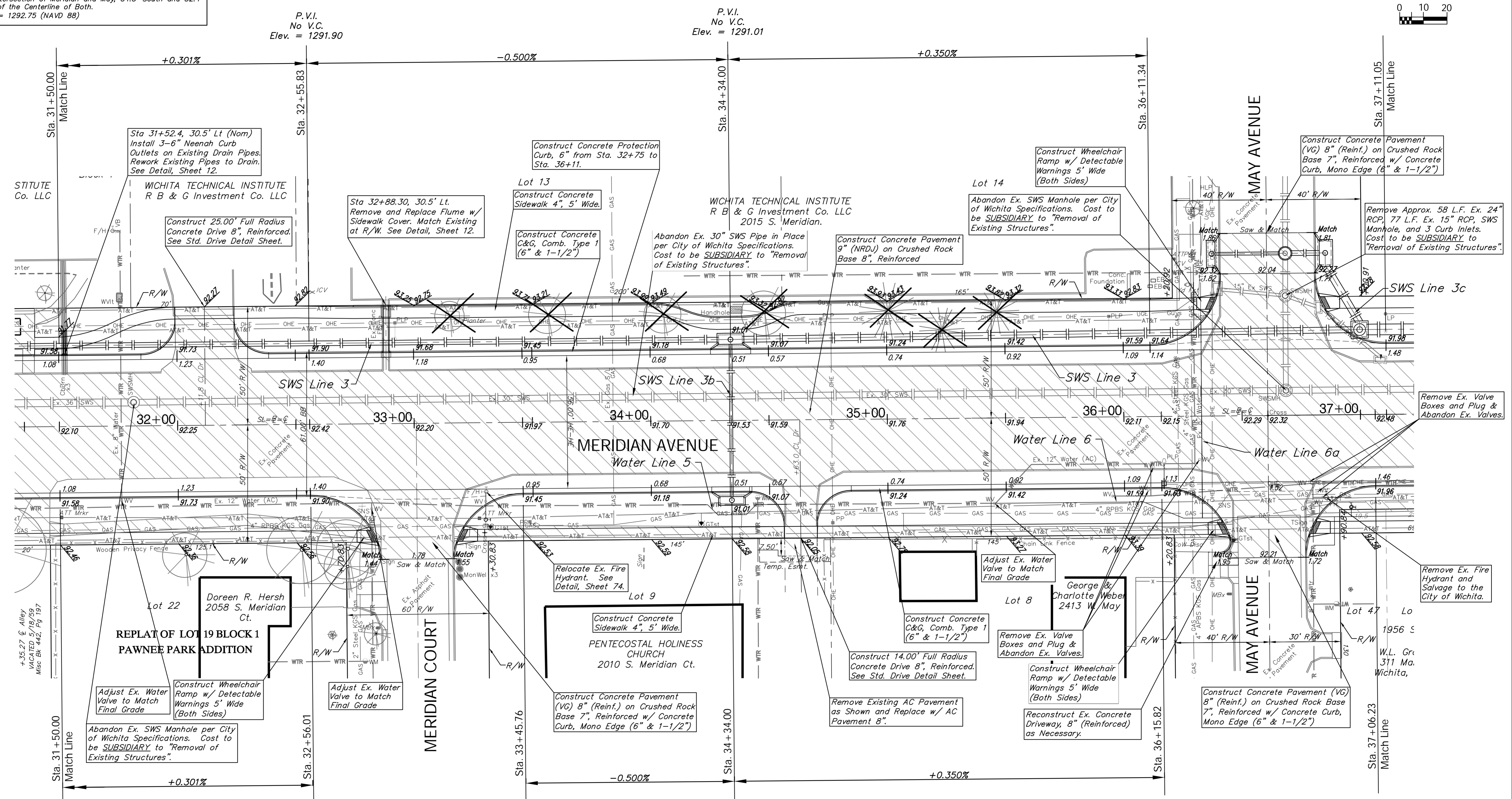
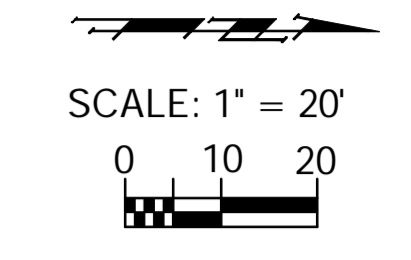


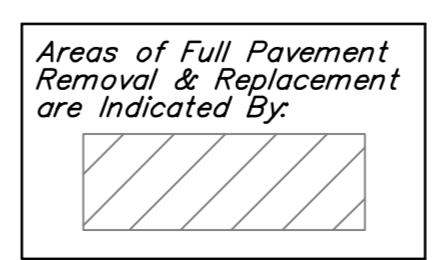
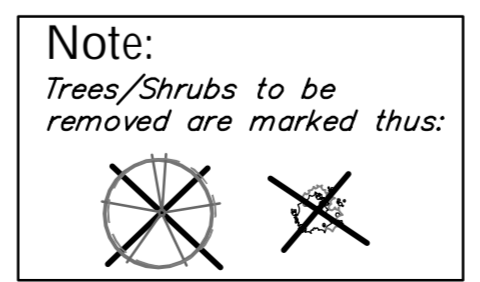
BENCHMARK:
 BM #2 - Chiseled "a" on the Top of Curb on the South Side of May Avenue adjacent to Fire Hydrant, 260'± West of Centerline of Meridian.
 Elev. = 1292.76 (NAVD 88)
 BM #3 - City of Wichita Benchmark Disc in the Southeast Corner of the Intersection of Meridian and May, 34.5' South and 52.4' East of the Centerline of Both.
 Elev. = 1292.75 (NAVD 88)

REGION NO.	STATE	PROJECT NO.	FISCAL YEAR	SHEET NO.	TOTAL SHEETS
7	KANSAS	087 N-0594-01	2015	18	153



PROTECTION CURB					
STA. TO STA. (BASELINE)	ROADWAY	SIDE	HEIGHT	LENGTH (ft.)	
32+74.5	36+11.8	Meridian	Lt.	6"	337.3

P.V.I.
No V.C.
Elev. = 1291.01



Drawing File: E:\Proj\Meridian-Pawnee to Orient\Civil 3D\Meridian Base.dwg (Pav 05)
 Design: TPV
 Drawn: Sonny
 Approved: JFB
 Scale: 1:20
 Project No. 0808E186 CAPITAL IMPROVEMENT PROJECT
MERIDIAN AVENUE PAVING
 Sta. 31 + 50.00 to Sta. 37 + 11.05
 MERIDIAN AVENUE - PAWNEE AVENUE to MCCORMICK AVENUE

Baughman Company, P.A.
 315 Ellis St., Wichita, KS 67211 P 316.262.7271 F 316.262.0149
 ENGINEERING | SURVEYING | PLANNING | LANDSCAPE ARCHITECTURE

May 2015
 SHEET 18 OF 153