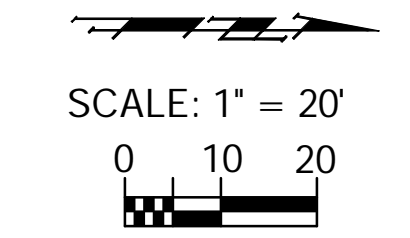


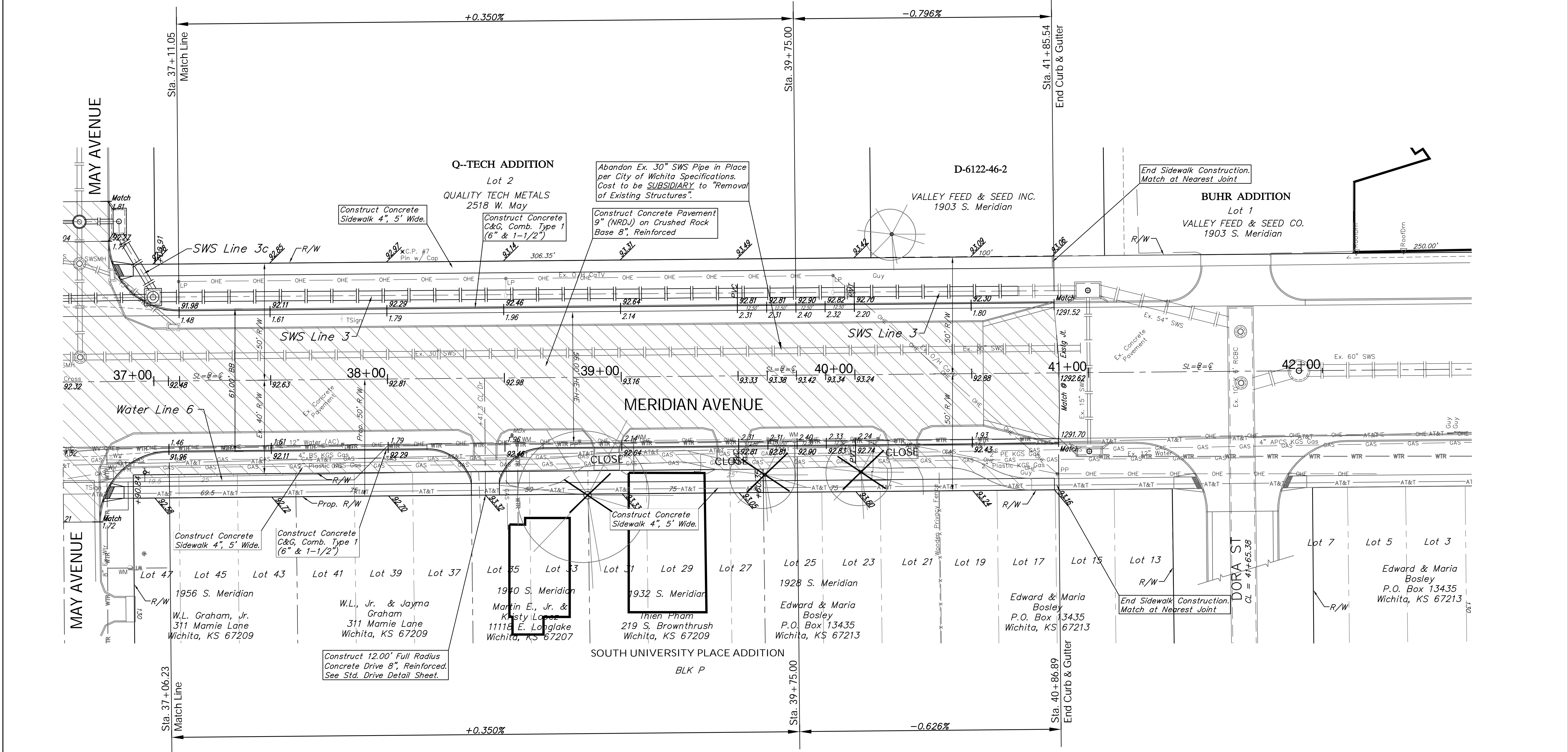
**BENCHMARK:**  
 BM #2 - Chiseled "a" on the Top of Curb on the South Side of May Avenue adjacent to Fire Hydrant, 260'± West of Centerline of Meridian.  
 Elev. = 1292.76 (NAVD 88)  
 BM #3 - City of Wichita Benchmark Disc in the Southeast Corner of the Intersection of Meridian and May, 34.5' South and 52.4' East of the Centerline of Both.  
 Elev. = 1292.75 (NAVD 88)

| REGION NO. | STATE  | PROJECT NO.   | FISCAL YEAR | SHEET NO. | TOTAL SHEETS |
|------------|--------|---------------|-------------|-----------|--------------|
| 7          | KANSAS | 087 N-0593-01 | 2015        | 19        | 153          |



P.V.I.  
 50.00' V.C.  
 Elev. = 1292.90

P.V.I.  
 50.00' V.C.  
 Elev. = 1292.90



**Note:**  
 Trees/Shrubs to be removed are marked thus:

Areas of Full Pavement Removal & Replacement are Indicated By:

Drawing File: E:\Proj\Meridian-Pavement to Orient\Civil 3D\Meridian Base.dwg (Pav 06)  
 Design: TPV  
 Drawn: Sonny  
 Approved: JFB  
 Scale: 1:20  
 Project No. 0806E186 CAPITAL IMPROVEMENT PROJECT  
**MERIDIAN AVENUE PAVING**  
 Sta. 37+11.05 to Sta. 40+86.89  
 MERIDIAN AVENUE - PAVEMENT TO MCCORMICK AVENUE

**Baughman Company, P.A.**  
 315 Ellis St. Wichita, KS 67211 P 316.262.7271 F 316.262.0149  
 ENGINEERING | SURVEYING | PLANNING | LANDSCAPE ARCHITECTURE

May 2015  
 SHEET 19 OF 153