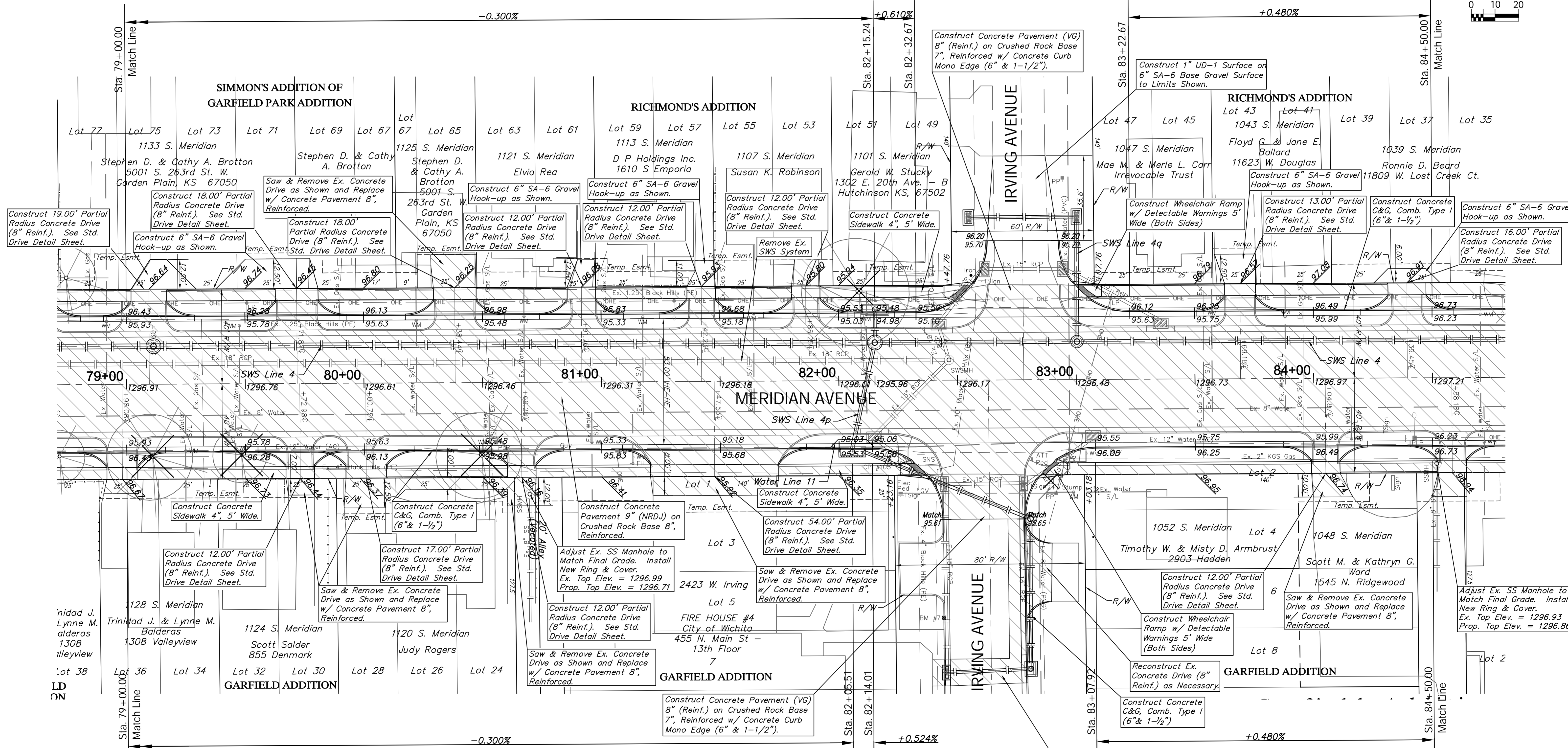
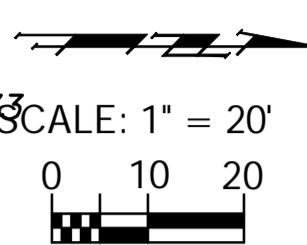


BENCHMARK:
 BM #7 - Chiseled "a" on the Top of Curb on the South Side of
 Irving Avenue, 100'± East of Centerline of Meridian.
 Elev. = 1295.86 (NAVD 88)

PROTECTION CURB					
STA. TO STA. (BASELINE)	ROADWAY	SIDE	HEIGHT	LENGTH (ft.)	
81+92.3	82+44.5	Meridian	Lt.	8"	52.2
83+10.8	83+62.7	Meridian	Lt.	6"	51.9
83+75.7	84+31.5	Meridian	Lt.	6"	55.8
84+10.9	84+52.2	Meridian	Rt.	6"	41.3

REGION NO.	STATE	PROJECT NO.	FISCAL YEAR	SHEET NO.	TOTAL SHEETS
7	KANSAS	087-N-0593-01	2015	26	153

P.V.I.
 No V.C.
 Elev. = 1296.73



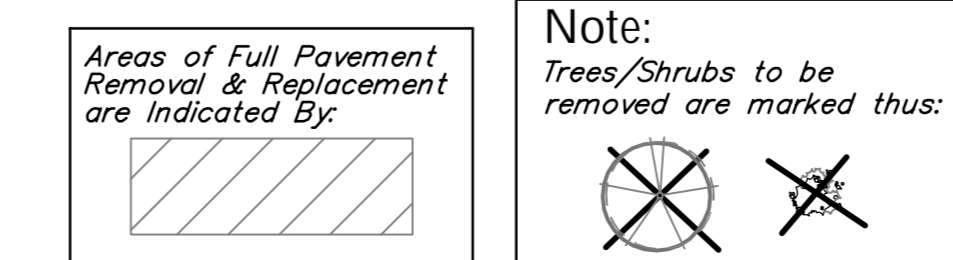
P.V.I.
 No V.C.
 Elev. = 1295.48

P.V.I.
 No V.C.
 Elev. = 1295.53

P.V.I.
 No V.C.
 Elev. = 1296.73

PROTECTION CURB					
STA. TO STA. (BASELINE)	ROADWAY	SIDE	HEIGHT	LENGTH (ft.)	
79+17.1	79+62.9	Meridian	Lt.	6"	45.8
79+80.9	80+29.4	Meridian	Lt.	8"	48.5
80+09.2	80+60.3	Meridian	Rt.	6"	51.1
80+47.4	80+85.7	Meridian	Lt.	8"	38.3
80+97.7	81+36.2	Meridian	Lt.	8"	38.5
81+48.2	81+80.3	Meridian	Lt.	8"	32.1

The Existing 8" AC Water Line in Meridian Shall be Abandoned in Place from Walker to McCormick. See Details, Sheet 74.



Drawing File: E:\Projects\Meridian - Orient to McCormick\Civil 3d\Meridian Base.dwg (Pav 13)
 Project No. 1004E493 CAPITAL IMPROVEMENT PROJECT
 Design: TPV
 Drawn: STAFF
 Approved: TPV
 Scale: NOTED

Meridian Avenue Paving
 Sta. 79+00.00 to Sta. 84+50.00
 Meridian Avenue - Pawnee Avenue to McCormick Avenue

Baughman Company, P.A.
 315 Ellis St., Wichita, KS 67211 P 316.262.7271 F 316.262.0149
 ENGINEERING | SURVEYING | PLANNING | LANDSCAPE ARCHITECTURE