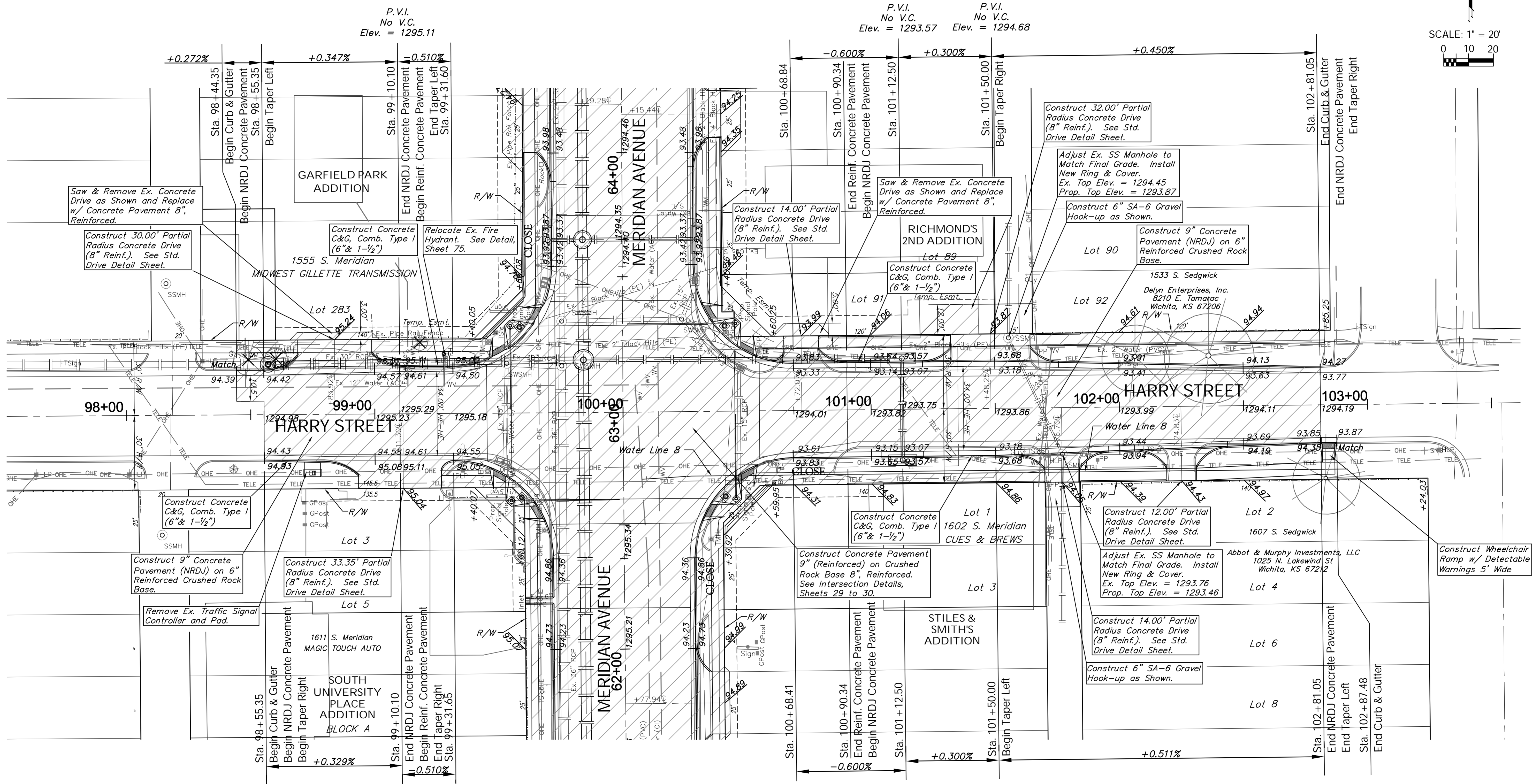


BENCHMARK:
 BM #3 - City of Wichita Benchmark Disc in the Southeast Corner
 of the Intersection of Meridian and Harry, 29.5' South
 and 61' East of the Centerline of Both.
 Elev. = 1294.17 (NAVD 88)

REGION NO.	STATE	PROJECT NO.	FISCAL YEAR	SHEET NO.	TOTAL SHEETS
7	KANSAS	087 N-0593-01	2015	28	153

SCALE: 1" = 20'



PROTECTION CURB				
STA. TO STA. (BASELINE)	ROADWAY	SIDE	HEIGHT	LENGTH (ft.)
100+79.1 101+32.3	Harry	Lt.	6"	53.2
100+89.8 101+69.7	Harry	Rt.	6"	79.9
101+64.3 101+85.0	Harry	Lt.	6"	20.7
100+83.7 102+18.8	Harry	Rt.	6"	35.1

Areas of Full Pavement Removal & Replacement are Indicated By:

Note:
 Trees/Shrubs to be removed are marked thus:

Drawing File: E:\Projects\Meridian - Orient to McCormick\Civil 3d\Meridian Base.dwg (Pav 15)
 Design: TPV
 Drawn: STAFF
 Approved: TPV
 Scale: NOTED

HARRY STREET PAVING
 Sta. 98+55.35 to Sta. 102+81.05
 MERIDIAN AVENUE - PAVINE AVENUE TO MCCORMICK AVENUE

Baughman Company, P.A.
 315 Ellis St., Wichita, KS 67211 P 316.262.7271 F 316.262.0149
 ENGINEERING | SURVEYING | PLANNING | LANDSCAPE ARCHITECTURE