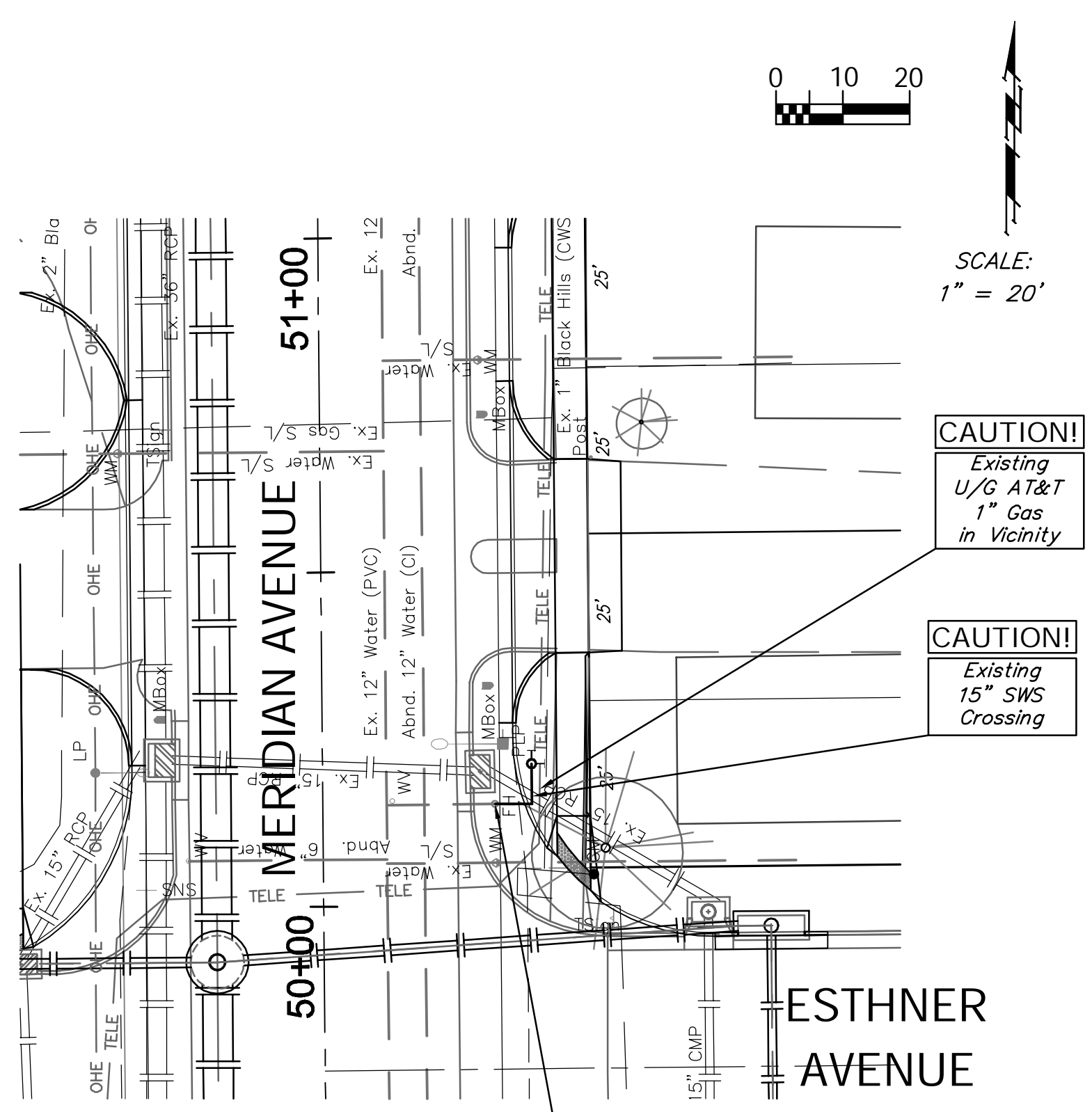


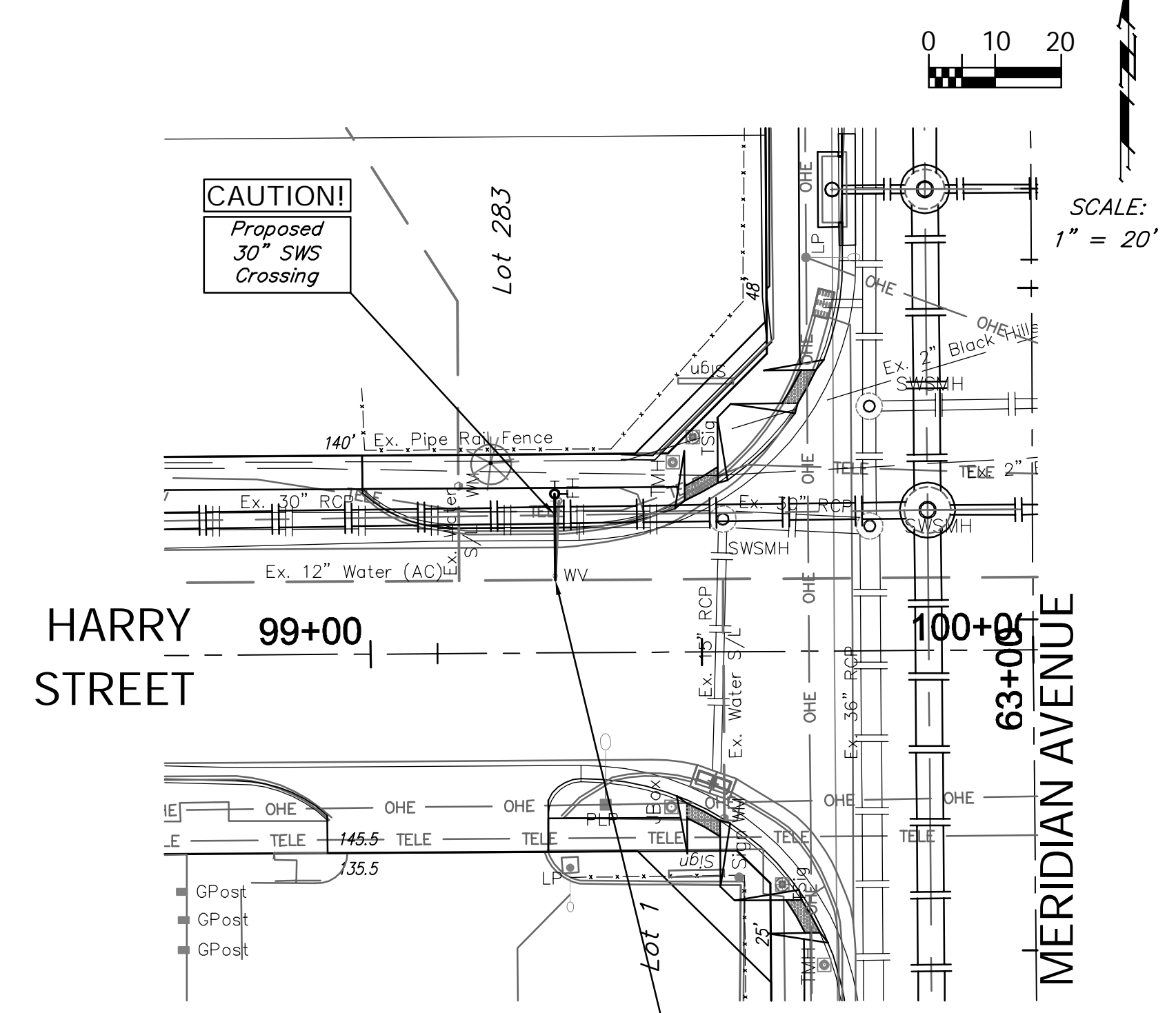
REGION NO.	STATE	PROJECT NO.	FISCAL YEAR	SHEET NO.	TOTAL SHEETS
7	KANSAS	087 N-0593-01	2015	75	153



**CAUTION!**  
Existing U/G AT&T  
1" Gas  
in Vicinity

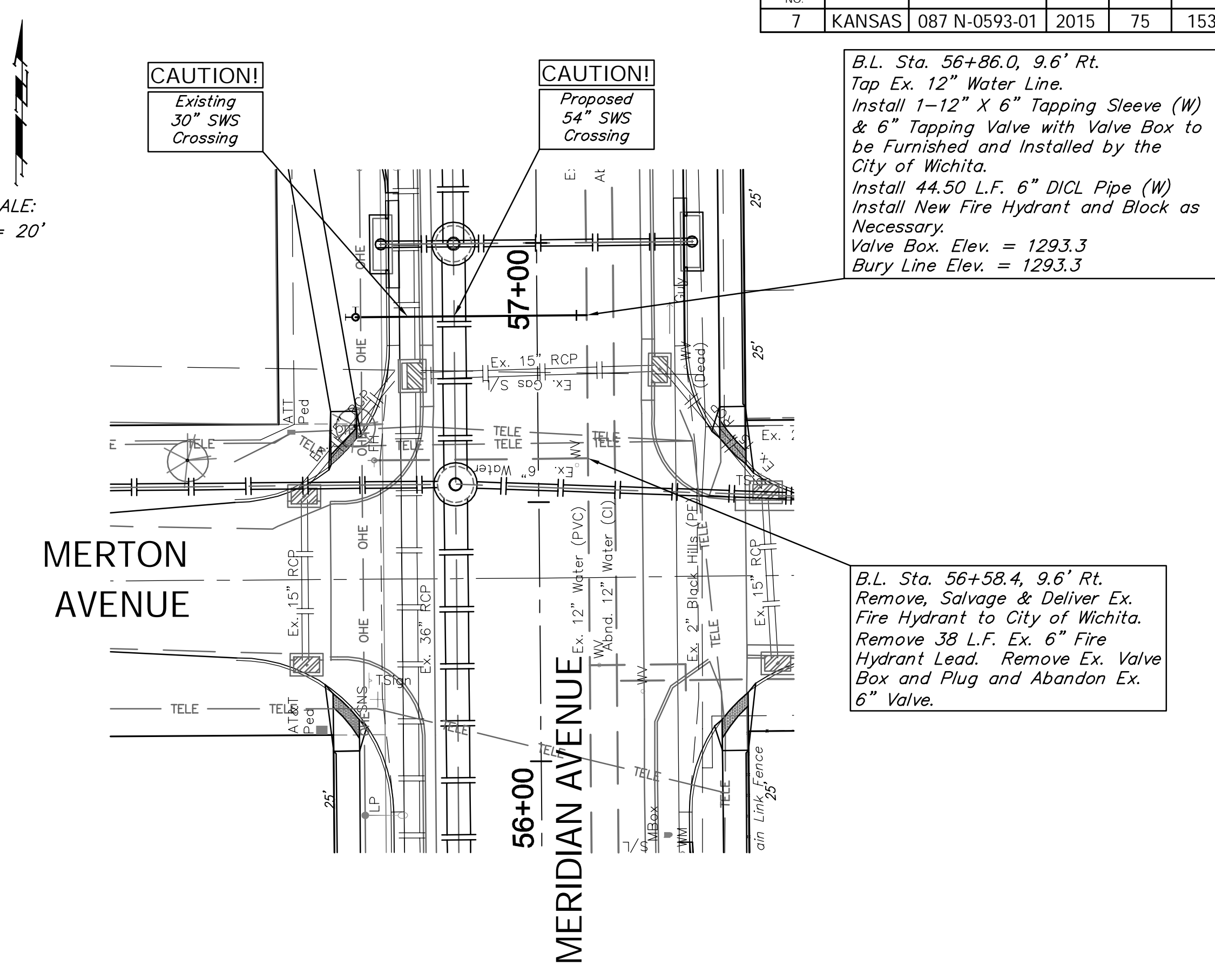
**CAUTION!**  
Existing 15" SWS  
Crossing

B.L. Sta. 50+15.1, 25.8' Rt.  
Remove, Salvage & Deliver Ex.  
Fire Hydrant to City of Wichita.  
Extend Ex. 6" Fire Hydrant Lead  
5.0 L.F. (E)  
Install 1-6" CIRJ 90° Bend (N)  
Install 6.0 L.F. 6" DICI Pipe (N).  
Install New Fire Hydrant and  
Block as Necessary.  
Bury Line Elev. = 1293.4



**CAUTION!**  
Proposed 30" SWS  
Crossing

B.L. Sta. 99+27.9, 11.0' Lt.  
Remove, Salvage & Deliver Ex. Valve  
and Fire Hydrant to City of Wichita.  
Install 6" MJ Gate Valve and 13.0 L.F.  
6" DICI Pipe (N).  
Install New Fire Hydrant and Block as  
Necessary.  
Valve Box Elev. = 1294.8  
Bury Line Elev. = 1295.2

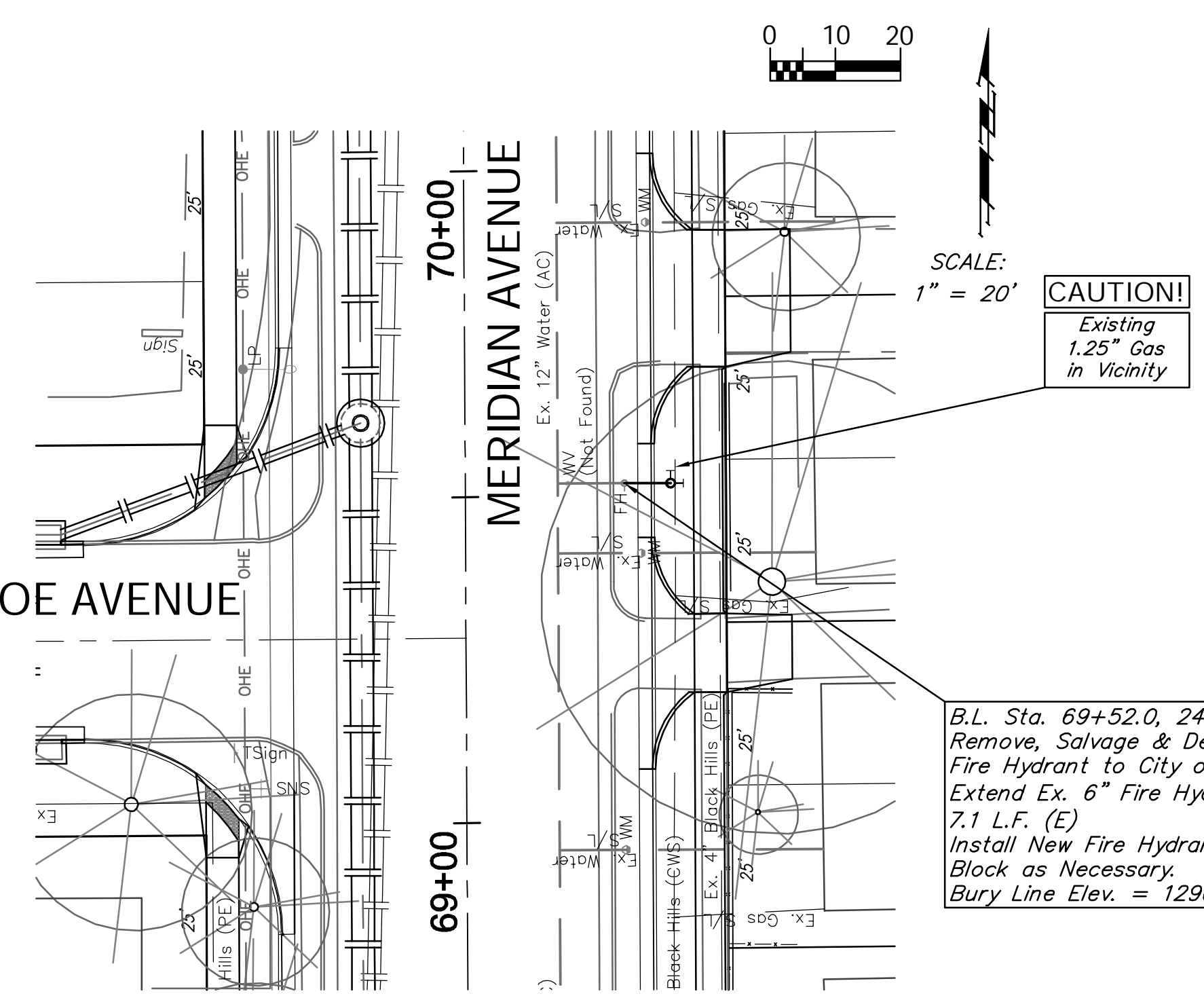


**CAUTION!**  
Existing 30" SWS  
Crossing

**CAUTION!**  
Proposed 54" SWS  
Crossing

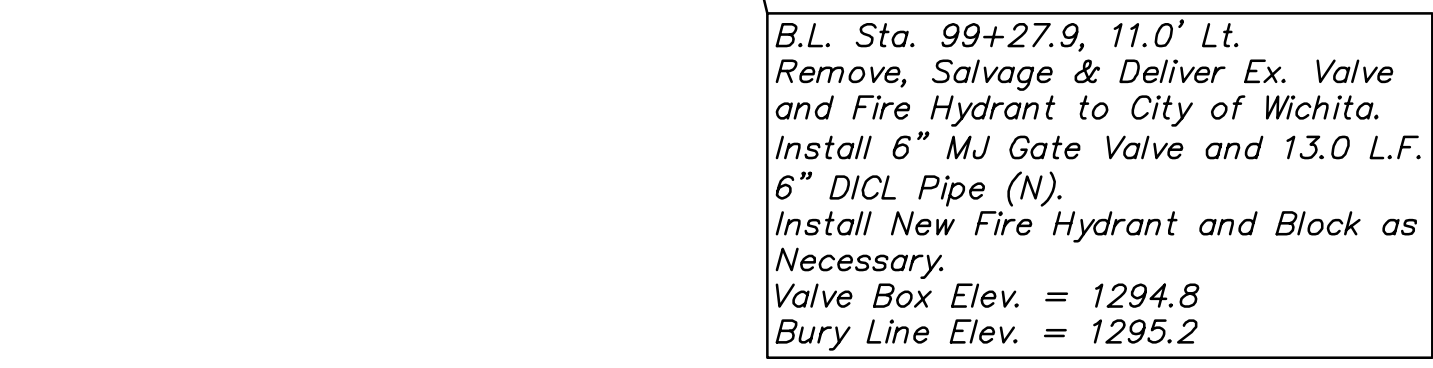
B.L. Sta. 56+86.0, 9.6' Rt.  
Tap Ex. 12" Water Line.  
Install 1-12" X 6" Tapping Sleeve (W)  
& 6" Tapping Valve with Valve Box to  
be Furnished and Installed by the  
City of Wichita.  
Install 44.50 L.F. 6" DICI Pipe (W)  
Install New Fire Hydrant and Block as  
Necessary.  
Valve Box Elev. = 1293.3  
Bury Line Elev. = 1293.3

B.L. Sta. 56+58.4, 9.6' Rt.  
Remove, Salvage & Deliver Ex.  
Fire Hydrant to City of Wichita.  
Remove 38 L.F. Ex. 6" Fire  
Hydrant Lead. Remove Ex. Valve  
Box and Plug and Abandon Ex.  
6" Valve.

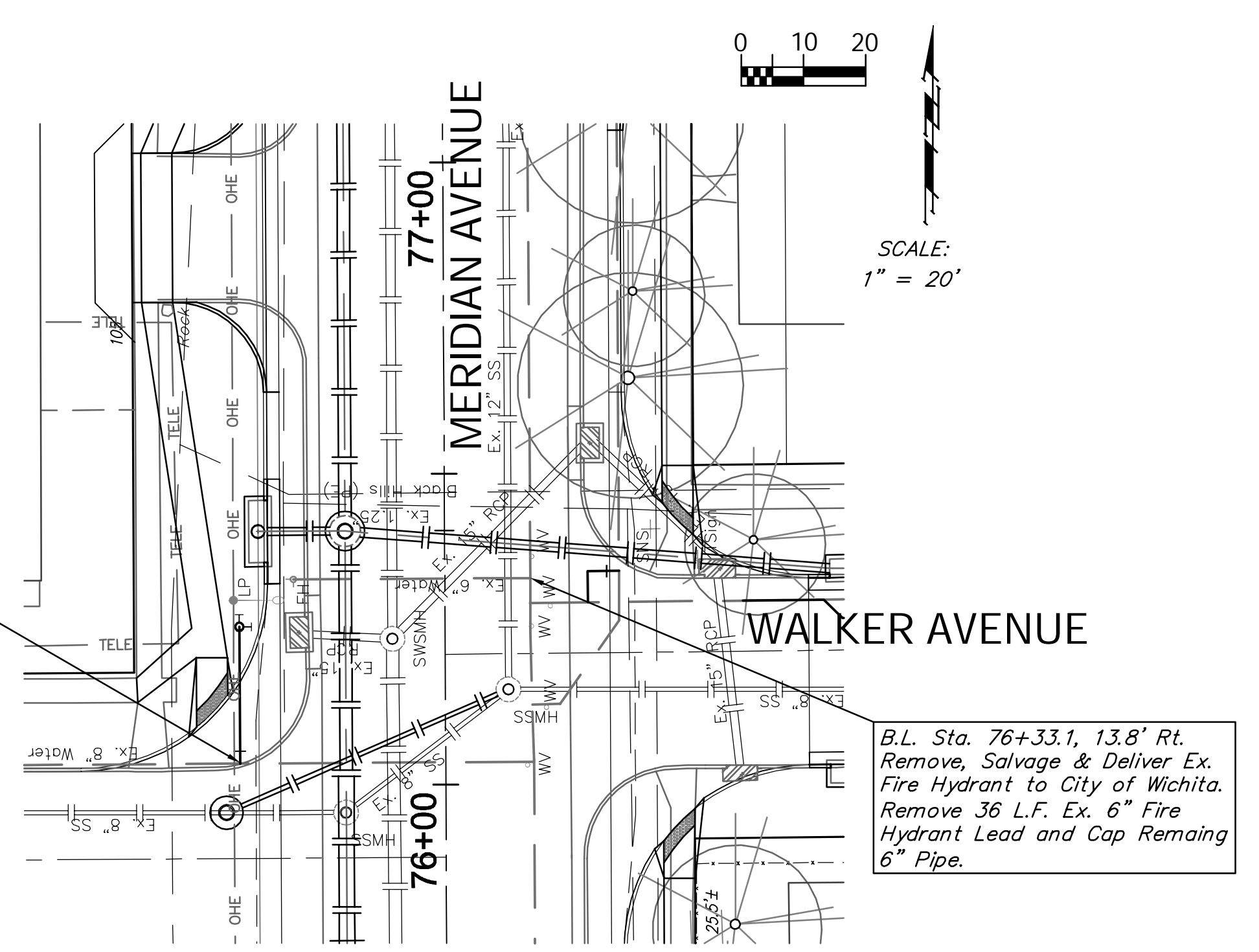


**CAUTION!**  
Existing 1.25" Gas  
in Vicinity

B.L. Sta. 69+52.0, 24.4' Rt.  
Remove, Salvage & Deliver Ex.  
Fire Hydrant to City of Wichita.  
Extend Ex. 6" Fire Hydrant Lead  
7.1 L.F. (E)  
Install New Fire Hydrant and  
Block as Necessary.  
Bury Line Elev. = 1296.5



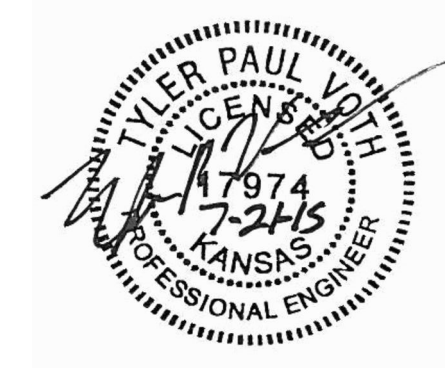
B.L. Sta. 76+03.53, 33.04' Lt.  
Tap Ex. 6" Water Line.  
Install 1-8" X 6" Tapping Sleeve (N)  
& 6" Tapping Valve with Valve Box to  
be Furnished and Installed by the  
City of Wichita.  
Install 22.00 L.F. 6" DICI Pipe (N)  
Install New Fire Hydrant and Block as  
Necessary.  
Valve Box Elev. = 1295.4  
Bury Line Elev. = 1296.0



B.L. Sta. 76+33.1, 13.8' Rt.  
Remove, Salvage & Deliver Ex.  
Fire Hydrant to City of Wichita.  
Remove 36 L.F. Ex. 6" Fire  
Hydrant Lead and Cap Remaining  
6" Pipe.

All Cost Associated with Installing the  
Fire Hydrant Leads and Fire Hydrants  
shall be **SUBSIDIARY** to the "Fire  
Hydrant Relocation" Bid Item.

The Fire Hydrant Relocations  
Shall Require Ductile Iron Pipe  
and Restrained Joint Fittings.



Drawing File: E:\Projects\Meridian Orient to McCormick\Civil 3d\Meridian Base.dwg (FH 01)  
Project No. 1004-E493 CAPITAL IMPROVEMENT PROJECT

Design: ENGINEER  
Drawn: STAFF  
Approved: ENGINEER  
Scale: NOTED

**FIRE HYDRANT RELOCATIONS**

MERIDIAN AVENUE - PAWNEE AVENUE TO MCCORMICK AVENUE

**Baughman Company, P.A.**  
315 Ellis St., Wichita, KS 67211 P 316.262.7271 F 316.262.0149  
ENGINEERING | SURVEYING | PLANNING | LANDSCAPE ARCHITECTURE

May 2015  
SHEET 75 OF 153