

**GENERAL NOTES**

- THE CONTRACTOR SHALL COMPLY WITH ALL APPLICABLE SAFETY REGULATIONS. ALL CONSTRUCTION SHALL BE COMPLETED FOLLOWING CURRENT CITY STANDARD SPECIFICATIONS AND SPECIAL PROVISIONS.
- THE CONTRACTOR WILL BE REQUIRED TO PROVIDE NOTICE TO UTILITY COMPANIES A MINIMUM OF SEVENTY-TWO (72) HOURS PRIOR TO ANY EXCAVATION, AS FOLLOWS:  
KANSAS ONE-CALL 687-2470  
THE CONTRACTOR MUST NOTIFY THE FOLLOWING IN CASE OF AN EMERGENCY:  

AT&T	1-800-246-8464
BLACK HILLS ENERGY (GAS)	1-800-694-8989
CITY OF WICHITA WATER	1-316-268-4555
CITY OF WICHITA SEWER	1-316-268-4073
CITY OF WICHITA STORMWATER	1-316-268-4090
CITY OF WICHITA TRAFFIC	1-316-268-4034
COX COMMUNICATIONS	1-888-249-3530
KANSAS GAS SERVICE	1-888-482-4950
WESTAR ENERGY	1-800-544-4857
- UTILITY SERVICE LINES, POLES, ETC. ARE TO BE ADJUSTED AS NECESSARY BY OTHERS PRIOR TO CONSTRUCTION UNLESS THE PLANS SPECIFICALLY CALL FOR THEIR ADJUSTMENT BY ITS OWNER DURING CONSTRUCTION. EXISTING UTILITIES AND THEIR LOCATION, AS SHOWN ON THE PLAN, REPRESENT THE BEST INFORMATION OBTAINABLE FOR DESIGN. THE CONTRACTOR WILL BE REQUIRED TO WORK AROUND EXISTING UTILITIES WITHIN THE RIGHT-OF-WAY AND EASEMENTS WHICH DO NOT CONFLICT WITH PROPOSED CONSTRUCTION.
- RUBBLE FROM THE REMOVAL OF MISCELLANEOUS STRUCTURES AND EXCESS EXCAVATION WHICH IS TO BE WASTED SHALL BE DISPOSED OF ON SITES TO BE PROVIDED BY THE CONTRACTOR. THESE SITES SHALL BE APPROVED BY THE ENGINEER AS TO SUITABILITY, APPEARANCE AND SITE LOCATION. LOCATIONS, IN THE OPINION OF THE ENGINEER, THAT WILL LEAVE AN UNSIGHTLY APPEARANCE WILL NOT BE APPROVED. ALL DISPOSAL SITES MUST BE APPROVED BY THE KANSAS DEPARTMENT OF HEALTH AND ENVIRONMENT. MATERIAL EITHER STOCKPILED OR DISPOSED OF IN A FLOOD PLAIN WOULD REQUIRE A KANSAS STATE BOARD OF AGRICULTURE PERMIT. ANY MATERIAL DUMPED IN WATERS OF THE UNITED STATES OR WETLANDS IS SUBJECT TO U.S. CORPS OF ENGINEERS PERMITTING REGULATIONS. ANY MATERIAL BURIED OR STOCKPILED BEYOND APPROVED CONSTRUCTION LIMITS WOULD REQUIRE ADDITIONAL ARCHAEOLOGICAL INVESTIGATIONS UNLESS BURIED IN A PREVIOUSLY APPROVED BORROW LOCATION.
- TREES AND SHRUBS IN PUBLIC RIGHT-OF-WAY WHICH ARE IN DIRECT CONFLICT WITH PROPOSED NEW CONSTRUCTION SHALL BE REMOVED BY THE CONTRACTOR WITH THE ENGINEER'S APPROVAL. TREES AND SHRUBS WHICH ARE NOT IN DIRECT CONFLICT WITH PROPOSED NEW CONSTRUCTION SHALL BE SAVED AND PROTECTED FROM DAMAGE.
- THE CONTRACTOR SHALL GIVE ALL PROPERTY OWNERS AND/OR TENANTS OF DEVELOPED PROPERTY ADJUTING THE CONSTRUCTION OF THIS PROJECT A MINIMUM OF TEN (10) DAYS NOTICE PRIOR TO START OF CONSTRUCTION.
- THE CONTRACTOR SHALL BE RESPONSIBLE FOR PRESERVING PROPERTY IRONS. THE CONTRACTOR WILL BE REQUIRED TO RE-ESTABLISH ANY PROPERTY IRONS WHICH ARE DAMAGED OR DESTROYED BY HIS CONSTRUCTION OPERATIONS. SUCH IRONS SHALL BE RE-ESTABLISHED BY A LICENSED LAND SURVEYOR IN ACCORDANCE WITH STATE LAWS.
- THE WATER DISTRIBUTION DIVISION SHALL FIELD LOCATE WATER VALVES ONE TIME DURING CONSTRUCTION WHEN REQUESTED BY THE CONTRACTOR. IT SHALL BE THE CONTRACTOR'S RESPONSIBILITY TO PRESERVE SUCH FIELD LOCATIONS DURING THE CONSTRUCTION PROCESS. WATER VALVES, VALVE BOXES OR FIRE HYDRANTS DAMAGED DURING CONSTRUCTION SHALL BE REPAIRED BY CONTRACTOR AT HIS OWN EXPENSE. VALVE BOXES AND WATER METERS WITHIN THE PROJECT LIMITS SHALL BE ADJUSTED TO MATCH FIELD GRADES.
- IF TRAFFIC WILL BE IMPACTED BY CONSTRUCTION, A TRAFFIC CONTROL PLAN MUST BE SUBMITTED AND APPROVED BY THE CITY TRAFFIC ENGINEER, BRIAN COON AT [traffic@wichita.gov](mailto:traffic@wichita.gov) BEFORE CONSTRUCTION CAN BEGIN. THE CONTRACTOR SHALL BE RESPONSIBLE FOR ALL TRAFFIC CONTROL MEASURES TO FACILITATE CONSTRUCTION. ALL CONSTRUCTION ZONE MARKINGS AND SIGNAGE SHALL CONFORM TO THE LATEST VERSION OF THE MANUAL ON UNIFORM TRAFFIC CONTROL DEVICES (MUTCD) AS PUBLISHED BY THE US DEPT. OF TRANSPORTATION, FEDERAL HIGHWAY ADMINISTRATION. ALL COSTS ASSOCIATED WITH CONSTRUCTION MARKINGS AND SIGNAGE SHALL BE THE CONTRACTOR'S RESPONSIBILITY.
- ALL AREAS DISTURBED DURING CONSTRUCTION THAT WILL NOT BE UNDER PROPOSED PAVEMENT SHALL BE SEEDED AND MULCHED. COST SHALL BE CONSIDERED SUBSIDIARY TO PROJECT SEEDING.
- CONTRACTOR SHALL LIMIT THE EXTENT OF TRENCH OPEN OVERNIGHT AND WEEKENDS TO LESS THAN 50 FEET.
- EXISTING UTILITIES AND THEIR LOCATION, AS SHOWN ON THE PLANS REPRESENT THE BEST INFORMATION OBTAINABLE FOR DESIGN. LOCATION INFORMATION HAS BEEN OBTAINED FROM THE VARIOUS COMPANIES AND IS EITHER FROM COMPANY UTILITY DRAWINGS OR COMPANY PROVIDED FIELD LOCATIONS. THE PLAN LOCATIONS SHOWN ARE NOT GUARANTEED. ADDITIONAL EXISTING UTILITIES MAY ALSO BE ENCOUNTERED.
- A PORTION OF EXCESS EXCAVATED MATERIAL SHALL BE MOUNDED AROUND MANHOLES WHICH EXTEND MORE THAN ONE (1) FOOT ABOVE THE EXISTING GROUND. SUCH MOUND SHALL BE CONSTRUCTED WITH NEW DEVELOPMENT A SIX (6) FOOT DIAMETER FLAT TOP WITH 4 TO 1 SIDE SLOPES DOWN TO THE ORIGINAL GROUND. THE ELEVATION OF THE FLAT TOP OF THE MOUND SHALL BE 0.4 FOOT BELOW THE TOP OF THE MANHOLE.
- CONTRACTOR SHALL PROVIDE POSITIVE DRAINAGE AWAY FROM ALL MANHOLE COVERS.
- ALL STUBS AND PLUGGED PIPES SHALL BE LOCATED WITH GREEN PLASTIC TAPE IN THE SAME MANNER AS RISERS.
- CONNECTING TO EXISTING MANHOLES:  
PRIOR TO LAYING SEWER LINES USING EXISTING STUBS IN EXISTING MANHOLES, THE CONTRACTOR SHALL EXPOSE AND VERIFY THE ELEVATION, GRADE AND ALIGNMENT OF EXISTING STUBS AND NOTIFY THE ENGINEER OF ANY DEVIATION FROM THE PLANS. WHERE CONNECTION TO AN EXISTING MANHOLE THAT DOES NOT HAVE AN EXISTING STUB OR THE STUB IS UNUSABLE DUE TO ELEVATION GRADE OR ALIGNMENT, THE CONTRACTOR SHALL BORE CUT INTO EXISTING MANHOLE WALL TO MAKE CONNECTION USING APPROVED WATER STOP GASKET, AND RESHAPE THE EXISTING MANHOLE INVERT TO PROVIDE SMOOTH FLOW. THE COST TO CONNECTING TO EXISTING MANHOLES IS INCIDENTAL TO THE PROJECT.
- THE CONTRACTOR SHALL PREVENT ANY CONSTRUCTION DEBRIS FROM ENTERING THE EXISTING SANITARY SEWER DURING CONSTRUCTION.
- THE CONTRACTOR SHALL BE RESPONSIBLE FOR MAINTAINING CONTINUOUS FLOW OF SEWAGE THROUGH CONSTRUCTION. CONTRACTOR'S PROPOSED METHOD FOR MAINTAINING SEWAGE FLOW SHALL BE SUBMITTED AND APPROVED BY THE SEWER MAINTENANCE DIVISION (316-268-4073) PRIOR TO STARTING AND BY-PASSING OF SEWAGE FLOWS.
- ALL TRAFFIC CONTROL DEVICES IN THE WORK ZONE (INCLUDING MARKINGS AND SIGNS) AND THEIR INSTALLATION AND MAINTENANCE SHALL COMPLY WITH THE LATEST EDITION OF THE MANUAL ON UNIFORM TRAFFIC CONTROL DEVICES (MUTCD). ALL TRAFFIC CONTROL DEVICES IN THE TRAVELED WAY OR CLEAR ZONE SHALL BE CRASHWORTHY (NCHRP REPORT 350 OR MASH COMPLIANT).  
<http://safety.fhwa.dot.gov/roadwaydept/policy/guide/roadhardware/wzd>
- ALL CONSTRUCTION EQUIPMENT, INCLUDING VEHICLES, MATERIALS, AND DEBRIS, SHALL BE STORED OUTSIDE OF THE CLEAR ZONE. WHERE THIS CANNOT BE ACHIEVED THE CONTRACTOR SHALL PLACE APPROPRIATE SIGNS, OBJECT IDENTIFIERS, AND/OR BARRICADES IN COMPLIANCE WITH MUTCD.
- EXCEPT WHEN REQUIRED FOR SAFETY, TRAFFIC CONTROL SHALL NOT BLOCK ANY LANES OR SIDEWALKS WHEN WORK IS NOT BEING PERFORMED.
- FOLLOW THE LINK BELOW FOR DETAILS ON SPECIFIC CITY OF WICHITA STANDARD DETAILS:  
<http://www.wichita.gov/government/departments/pwu/standardsconstruction>
- DEVELOPER FOR THIS PROJECT IS:  
COUNTRY HOLLOW, LLC  
RITCHIE DEVELOPMENT CORPORATION, MANAGER  
8100 E. 22ND STREET N., BUILDING 1000  
WICHITA, KS, 67226  
KEVIN M. MULLEN  
316-684-7300

**SANITARY SEWER**

TO SERVE

**COUNTRY HOLLOW ADDITION**

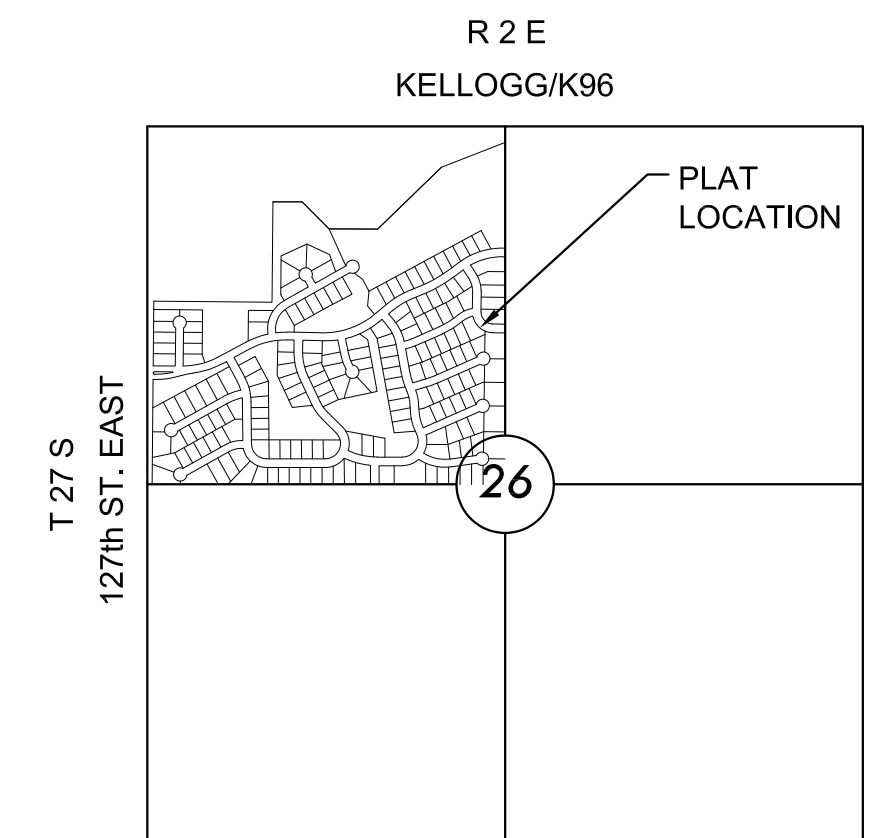
LATERAL 443, FOUR MILE CREEK

PROJECT NO. 468-85041

THE CITY OF WICHITA, KANSAS  
GARY JANZEN, P.E. - CITY ENGINEER

OCA NO. 744398

**Nowak Construction - Contractor**  
**J. Wagner - City of Wichita, Field Project Engineer**  
**K. Yale - City of Wichita, Inspector**  
**As-built**  
**Stub & Risers**  
**Release Date: 12/3/2015**  
**pdf: APRosas 12/4/2015**

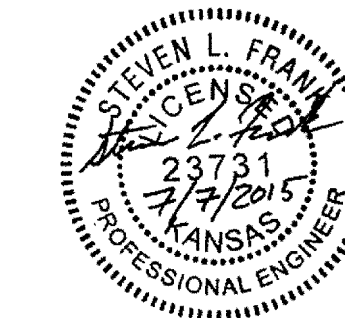
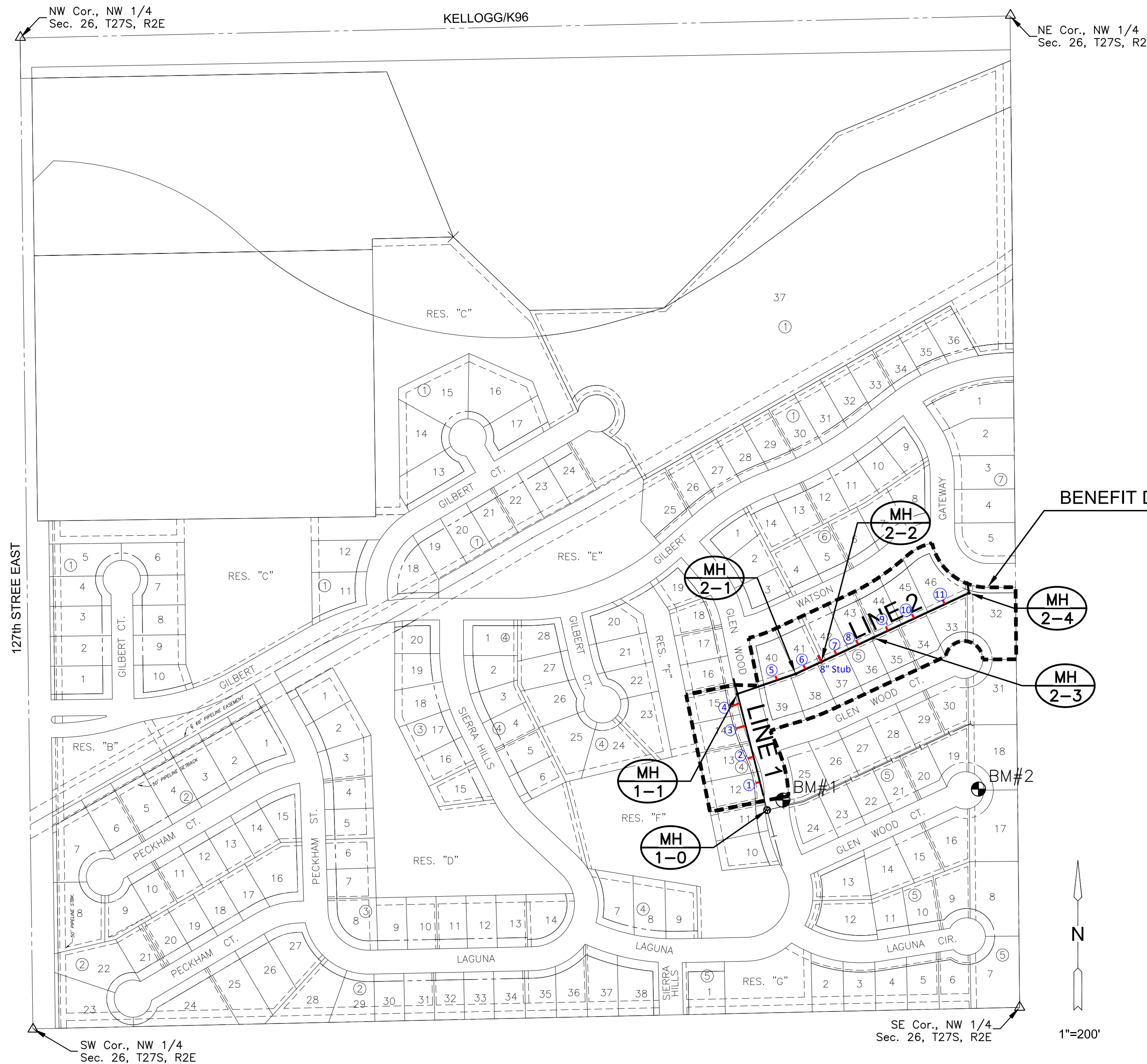


**VICINITY MAP**

No Scale

**INDEX TO DRAWINGS**

SHEET NO.	DESCRIPTION
1	TITLE SHEET
2-4	DETAILS
5	LINE 1
6	LINE 2
7	BUBBLE MAP
8-12	BMP SHEETS
13	FINAL PLAT



**BENCHMARKS**

- BM#1 DISC ON TOP OF CURB ON THE EAST SIDE OF GLENWOOD NORTH OF CURB INLET AT NORTHWEST CORNER OF LOT 24 BLK 5.  
ELEV.=1330.27 (NGVD 29)
- BM#2 CHISELED SQUARE CUT ON TOP OF THE CURB BETWEEN LOTS 17 AND 18, BLOCK 5.  
ELEV.=1337.8 (NGVD 29)

**DATUM:**  
THE PROJECT HORIZONTAL DATUM IS BASED ON THE NAD83, KANSAS STATE PLANE COORDINATE SYSTEM, SOUTH ZONE, (US SURVEY FEET DEFINITION), WITH A COMBINED ADJUSTMENT FACTOR (CAF) OF 1.000120014. ALL COORDINATE AND DIMENSIONS SHOWN ON THESE PLANS ARE MODIFIED TO GROUND VALUES.

THE FOLLOWING EQUATIONS CAN BE USED FOR CONVERSION:  
GROUND COORDINATES TO STATE PLANE COORDINATES = GROUND X 1/CAF  
STATE PLANE COORDINATES TO GROUND COORDINATES = STATE PLANE X CAF  
THE VERTICAL DATUM USED IS NAVD88.



SANITARY SEWER PLANS FOR  
**COUNTRY HOLLOW ADDITION**  
 PHASE 3A

©2015 MKEC Engineering All Rights Reserved  
 These drawings and their contents, including, but not limited to, all concepts, designs, & ideas are the exclusive property of MKEC Engineering (MKEC), and may not be used or reproduced in any way without the express consent of MKEC.

**TITLE SHEET**

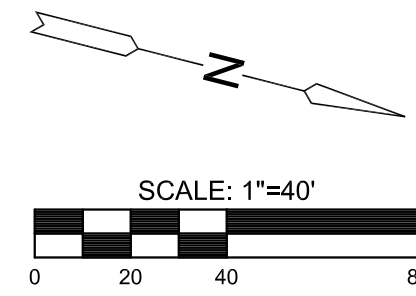
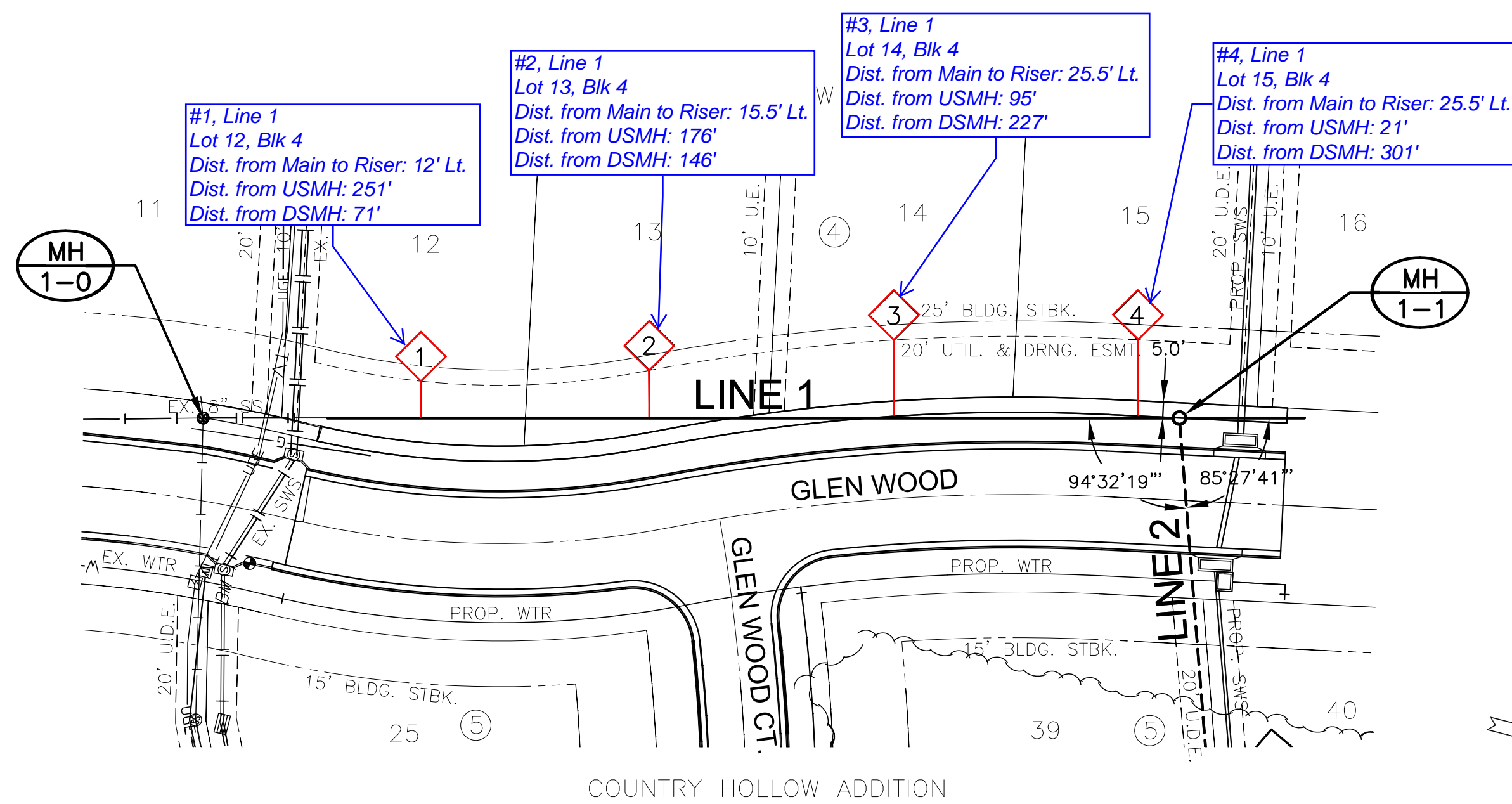
PROJECT NO.	468-85041	
DATE	JUNE 2015	
SCALE	1"=200'	
DESIGNED	DFL	
DRAWN	BKS	
CHECKED	GJA	
NO.	REVISION	DATE
SHEET NO.		
1 OF 13		

PLOTTED: Tuesday, July 07, 2015 @ 04:14 PM

I:\C:\Users\jgiles\Documents\CAD\SHS\0468\0468 SS-TITLE.DWG

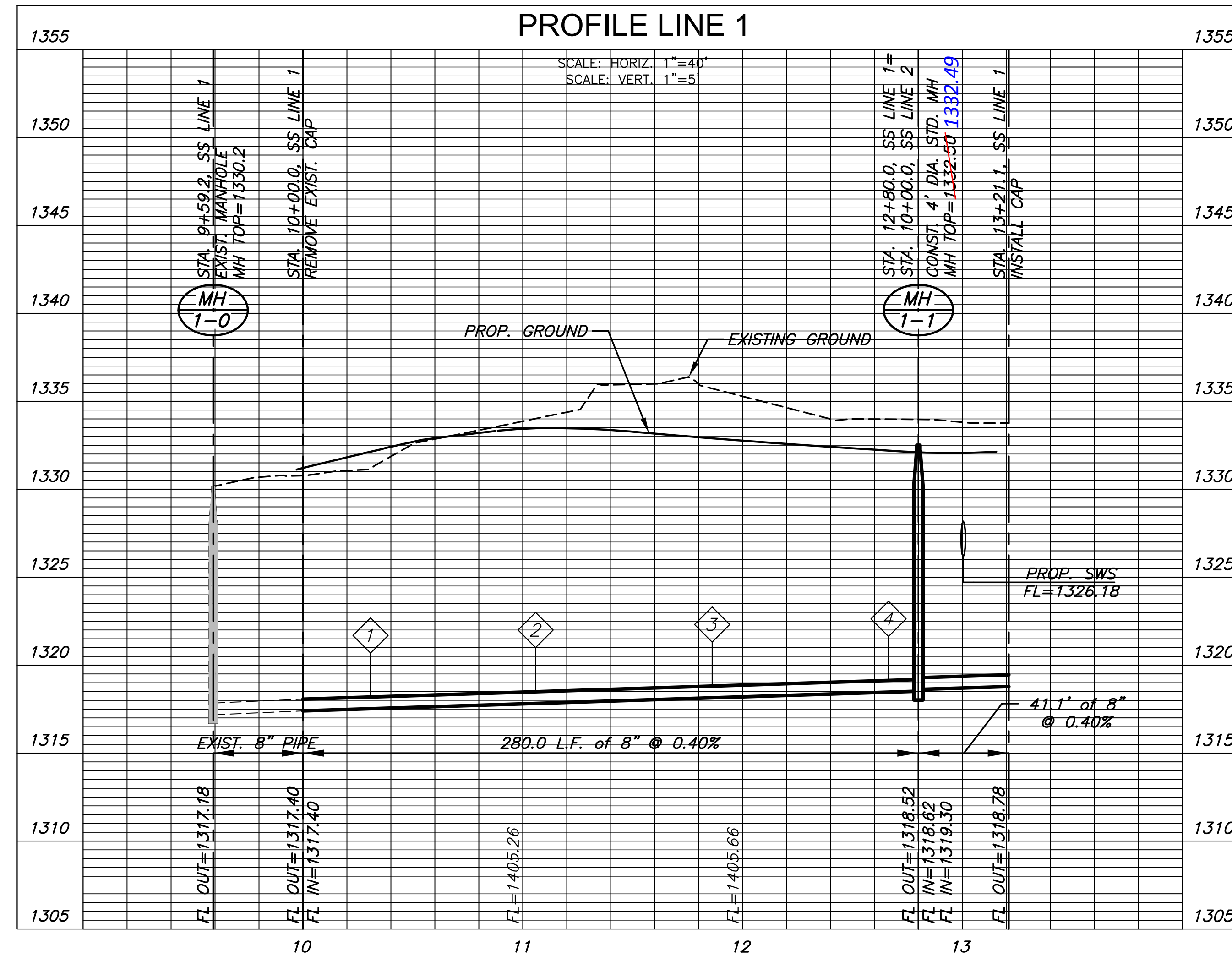
PLOTTED: Tuesday, July 07, 2015 @ 04:43PM

SEWER SERVICE TABLE								
NO.	TYPE	LOCATION				FOR INFORMATION ONLY		
		LOT NO.	BLOCK	LINE NO.	STATION/DIRECTION	APPROXIMATE LENGTH 4" PIPE	VERTICAL	HORIZONTAL
1	TEE SERVICE CONNECTION	12	4	1	10+31/LT.	12.0'	12.0'	
2	TEE SERVICE CONNECTION	13	4	1	11+06/LT.	13.0'	15.5'	
3	TEE SERVICE CONNECTION	14	4	1	11+86/LT.	12.0'	25.5'	
4	TEE SERVICE CONNECTION	15	4	1	12+66/LT.	11.0'	25.5'	



- NOTES:**
- CONTRACTOR TO VERIFY THE DEPTH AND LOCATION OF EXISTING UTILITIES PRIOR TO CONSTRUCTION.
  - TRENCHES TO BE BACKFILLED WITH SAND AND FLUSHED WHEN SEWER LINE RUNS ALONG FRONT OF LOTS. (LINE 1, STA. 10+00.0 TO STA. 13+21.1)

PLAN LINE 1  
PROFILE LINE 1

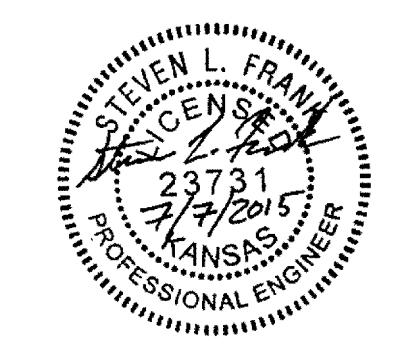


SANITARY SEWER PLANS FOR  
**COUNTRY HOLLOW ADDITION**  
PHASE 3A

©2015 MKEC Engineering All Rights Reserved  
www.mkec.com  
These drawings and their contents, including, but not limited to, all concepts, designs, & ideas are the exclusive property of MKEC Engineering (MKEC), and may not be used or reproduced in any way without the express consent of MKEC.

SANITARY SEWER LINE 1

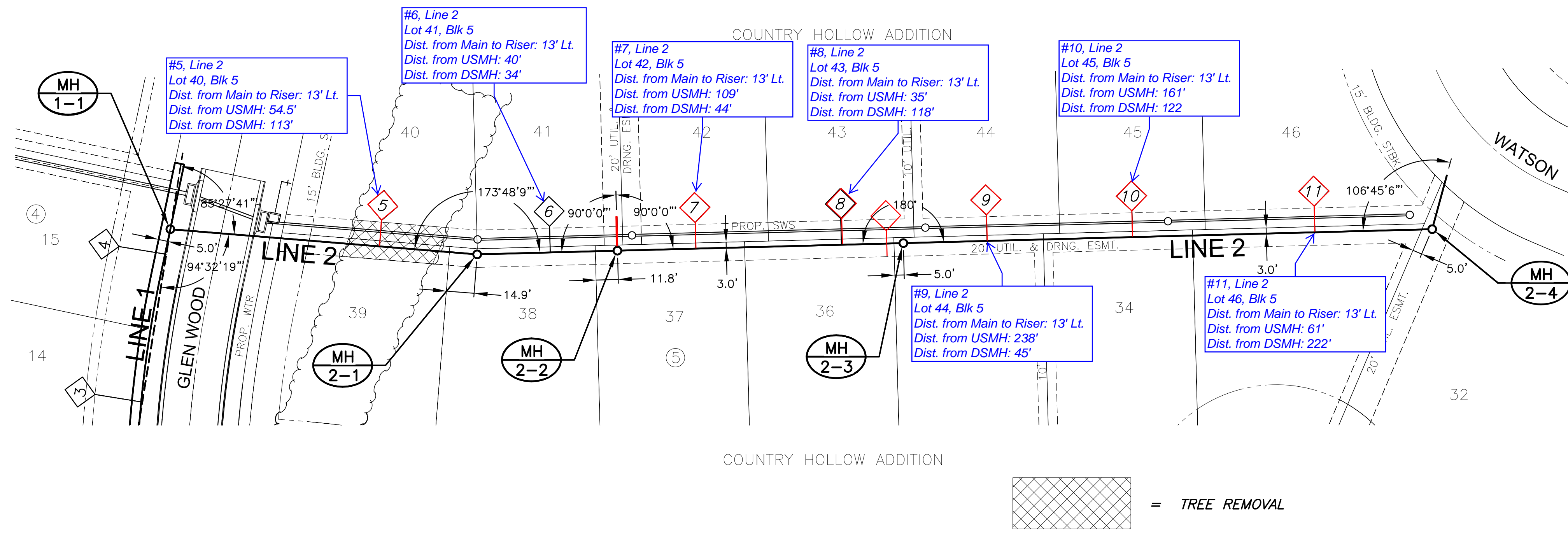
PROJECT NO.	468-85041
DATE	JUNE 2015
SCALE	1"=40'
DESIGNED	DFL
DRAWN	BKS
CHECKED	GJA



NO.	REVISION	DATE
-----	----------	------

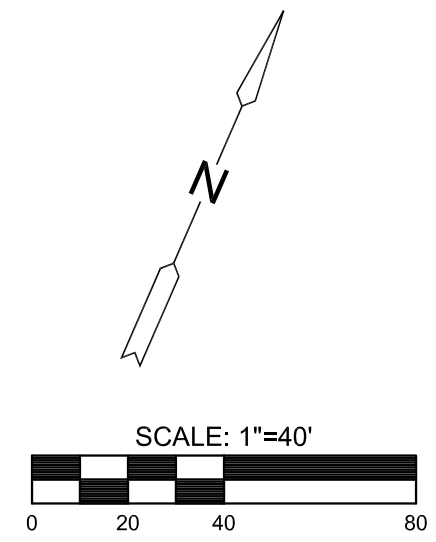
J:\CIVIL\468041\DWG\CAD\SET\SS\SS LINE 1.DWG

PLOTTED: Tuesday, July 07, 2015 @ 04:45PM

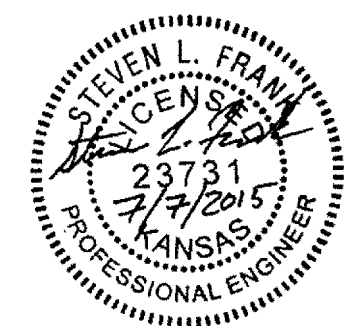
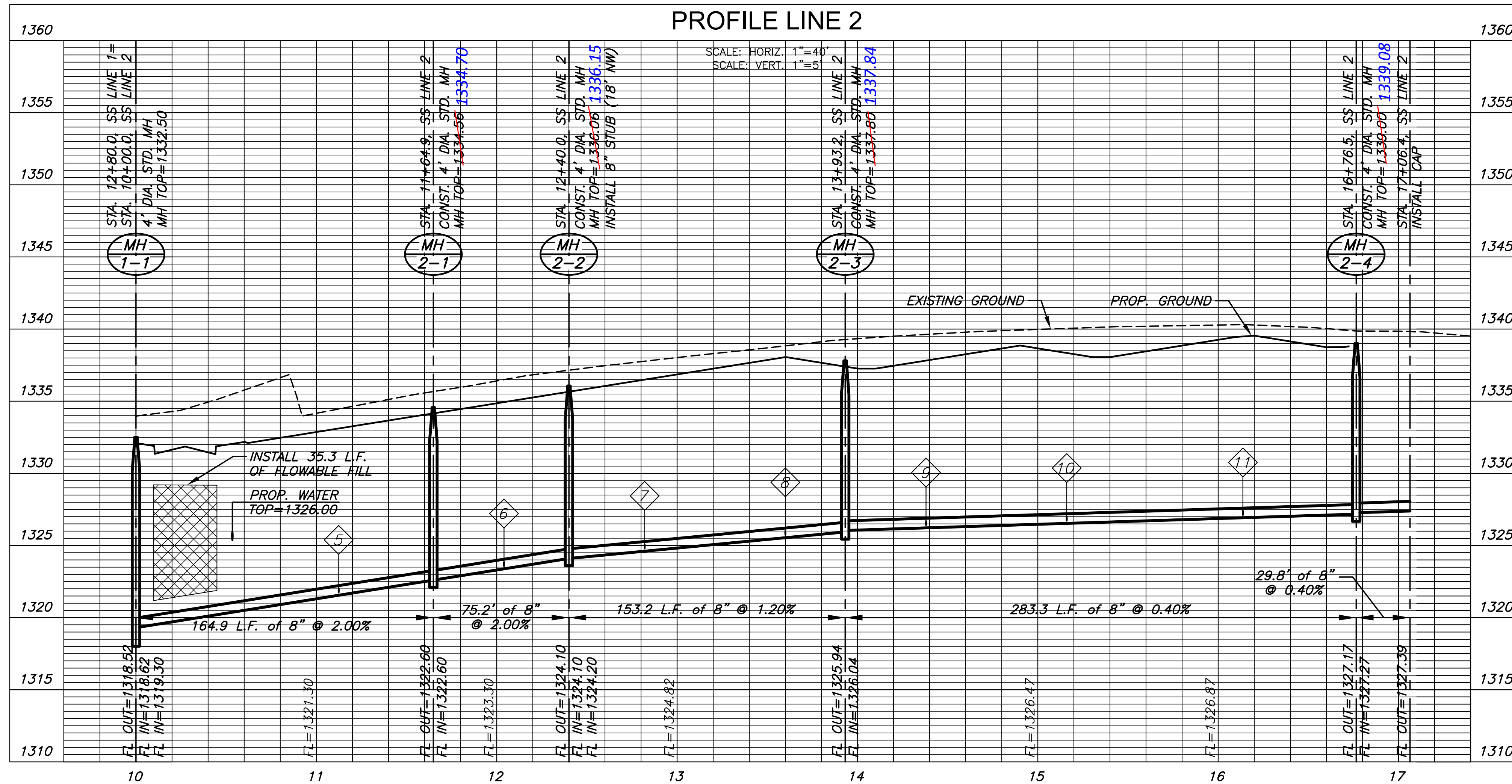


SEWER SERVICE TABLE							
NO.	TYPE	LOCATION			FOR INFORMATION ONLY		
		LOT NO.	BLOCK	LINE NO. STATION/DIRECTION	APPROXIMATE LENGTH 4" PIPE		
					VERTICAL	HORIZONTAL	
5	TEE SERVICE CONNECTION	40	5	2	11+12/LT.	9.0'	13.0'
6	TEE SERVICE CONNECTION	41	5	2	12+04/LT.	9.0'	13.0'
7	TEE SERVICE CONNECTION	42	5	2	12+82/LT.	9.0'	13.0'
8	TEE SERVICE CONNECTION	43	5	2	13+60/LT.	10.0'	13.0'
9	TEE SERVICE CONNECTION	44	5	2	14+38/LT.	9.0'	13.0'
10	TEE SERVICE CONNECTION	45	5	2	15+16/LT.	9.0'	13.0'
11	TEE SERVICE CONNECTION	46	5	2	16+14/LT.	10.0'	13.0'

**NOTE:**  
CONTRACTOR TO VERIFY THE DEPTH AND LOCATION OF EXISTING UTILITIES PRIOR TO CONSTRUCTION.



**PLAN LINE 2  
PROFILE LINE 2**



SANITARY SEWER PLANS FOR  
**COUNTRY HOLLOW ADDITION**  
 PHASE 3A

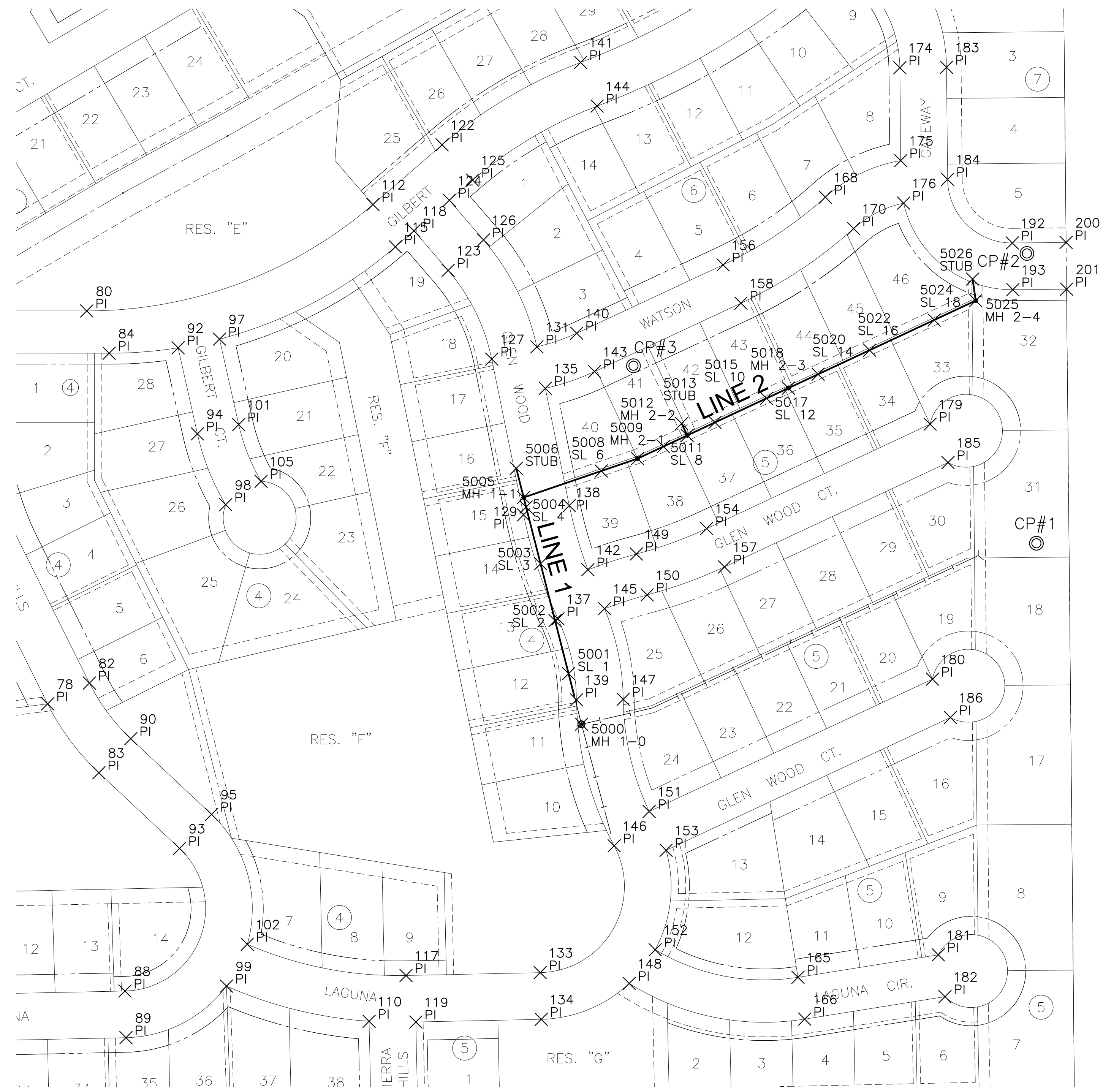
©2015 MKEC Engineering All Rights Reserved  
 These drawings and their contents, including, but not limited to, all concepts, designs, & ideas are the exclusive property of MKEC Engineering (MKEC), and may not be used or reproduced in any way without the express consent of MKEC.

**SANITARY SEWER LINE 2**

PROJECT NO.	468-85041
DATE	JUNE 2015
SCALE	1"=40'
DESIGNED	DFL
DRAWN	BKS
CHECKED	GJA

NO.	REVISION	DATE

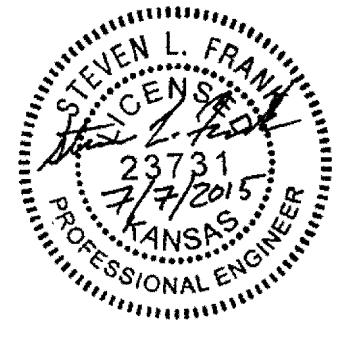
PLOTTED: Tuesday, July 07, 2015 @ 04:45PM



**CONTROL POINTS**

PT. NO.	NORTH	EAST	ELEV.	DESCRIPTION
1	1682116.738	1694393.137	1339.32	5/8" BAR W/ MKEC ALUM ID CAP
2	1682513.937	1694380.129	1338.21	5/8" BAR W/ MKEC ALUM ID CAP
3	1682359.995	1693840.825	1335.40	5/8" BAR W/ MKEC ALUM ID CAP

EVERY ATTEMPT HAS BEEN MADE TO INSURE ALL COORDINATE VALUES SHOWN ARE AN ACCURATE AND TRUE REPRESENTATION OF THE CURRENT PLANS. ALL VALUES ARE TO BE CONFIRMED WITH THE FINAL SIGNED PLAN SET BEFORE USE.



1" = 100'

PLAT POINTS			
Point #	Northing	Easting	Desc.
78	1681896.57	1693037.81	PI
80	1682435.20	1693091.39	PI
82	1681925.07	1693095.11	PI
83	1681802.19	1693108.02	PI
84	1682377.18	1693122.13	PI
88	1681503.01	1693143.83	PI
89	1681439.03	1693145.19	PI
90	1681848.88	1693151.79	PI
92	1682384.64	1693216.66	PI
93	1681698.43	1693218.70	PI
94	1682266.64	1693243.12	PI
95	1681745.12	1693262.47	PI
97	1682396.51	1693273.44	PI
98	1682169.63	1693281.87	PI
99	1681509.70	1693282.95	PI
101	1682279.33	1693299.71	PI
102	1681567.06	1693311.52	PI
105	1682201.58	1693330.35	PI
110	1681461.46	1693478.49	PI
112	1682581.06	1693483.74	PI
115	1682523.04	1693514.48	PI
117	1681524.23	1693529.07	PI
118	1682545.02	1693539.94	PI
119	1681460.51	1693542.52	PI
122	1682662.87	1693578.50	PI
123	1682490.72	1693586.82	PI
124	1682586.85	1693588.38	PI
125	1682614.43	1693620.33	PI
126	1682532.55	1693635.26	PI
127	1682369.13	1693646.57	PI
129	1682155.61	1693690.11	PI
131	1682385.90	1693708.44	PI
133	1681528.16	1693713.03	PI
134	1681464.17	1693714.39	PI
135	1682329.07	1693720.05	PI
137	1682013.15	1693737.35	PI
138	1682168.40	1693752.82	PI
139	1681902.15	1693762.78	PI

SANITARY POINTS			
Point #	Northing	Easting	Desc.
5000	1681868.66	1693769.58	MH 1-0
5001	1681938.03	1693751.90	SL 1
5002	1682010.81	1693733.35	SL 2
5003	1682088.63	1693713.51	SL 3
5004	1682166.35	1693693.70	SL 4
5005	1682179.51	1693690.34	MH 1-1
5006	1682219.38	1693680.18	STUB
5008	1682215.81	1693796.71	SL 6
5009	1682232.76	1693846.38	MH 2-1
5011	1682249.33	1693881.86	SL 8

PLAT POINTS			
Point #	Northing	Easting	Desc.
140	1682404.61	1693762.97	PI
141	1682775.82	1693768.41	PI
142	1682080.46	1693778.29	PI
143	1682352.06	1693787.52	PI
144	1682715.94	1693791.01	PI
145	1682027.11	1693801.16	PI
146	1681702.08	1693814.40	PI
147	1681902.86	1693826.77	PI
148	1681513.36	1693834.99	PI
149	1682102.00	1693844.83	PI
150	1682045.91	1693859.60	PI
151	1681749.05	1693862.33	PI
152	1681559.56	1693870.60	PI
153	1681695.90	1693885.57	PI
154	1682136.84	1693941.12	PI
156	1682498.34	1693963.63	PI
157	1682084.29	1693965.67	PI
158	1682445.79	1693988.18	PI
165	1681521.74	1694066.32	PI
166	1681464.47	1694075.49	PI
168	1682591.14	1694103.82	PI
170	1682548.01	1694142.61	PI
174	1682768.56	1694205.97	PI
175	1682641.23	1694207.16	PI
176	1682582.94	1694211.11	PI
179	1682279.92	1694247.44	PI
180	1681930.46	1694250.70	PI
181	1681552.54	1694258.72	PI
182	1681495.27	1694267.89	PI
183	1682769.15	1694269.97	PI
184	1682615.51	1694271.40	PI
185	1682227.37	1694271.99	PI
186	1681877.91	1694275.25	PI
192	1682528.33	1694360.22	PI
193	1682464.34	1694360.81	PI
200	1682529.02	1694433.85	PI
201	1682465.02	1694434.47	PI

SANITARY POINTS			
Point #	Northing	Easting	Desc.
5012	1682264.57	1693914.48	MH 2-2
5013	1682280.87	1693906.86	STUB
5015	1682282.34	1693952.53	SL 10
5017	1682315.35	1694023.20	SL 12
5018	1682329.39	1694053.26	MH 2-3
5020	1682348.36	1694093.87	SL 14
5022	1682381.37	1694164.54	SL 16
5024	1682422.71	1694253.04	SL 18
5025	1682449.29	1694309.95	MH 2-4
5026	1682478.83	1694305.65	STUB



SANITARY SEWER PLANS FOR  
**COUNTRY HOLLOW ADDITION**  
 PHASE 3A

©2015 MKEC Engineering All Rights Reserved  
 www.mkec.com  
 These drawings and their contents, including, but not limited to, all concepts, designs, & ideas are the exclusive property of MKEC Engineering (MKEC), and may not be used or reproduced in any way without the express consent of MKEC.

**BUBBLE MAP**

PROJECT NO.	468-85041	
DATE	JUNE 2015	
SCALE	1" = 100'	
DESIGNED	DRAWN	CHECKED
DFL	BKS	GJA
NO.	REVISION	DATE

J:\CIVIL\4685041\SS\DWG\SS\BUBBLE.DWG

MINIMUM PAD ELEVATIONS (LOWEST OPENINGS)			
LOTS	BLOCK	ELEVATION	
		(CITY DATUM)	(NGVD)
1	3	148.6	1336.0
2	3	148.6	1336.0
3	3	148.6	1336.0
4	3	148.6	1336.0
5	3	148.6	1336.0
6	3	148.6	1336.0
7	3	148.6	1336.0
8	3	148.6	1336.0
9	3	148.6	1336.0
10	3	148.6	1336.0
11	3	148.6	1336.0
12	3	148.6	1336.0
13	3	148.6	1336.0
14	3	148.6	1336.0
15	3	148.6	1336.0
16	3	148.6	1336.0
17	3	148.6	1336.0
18	3	148.6	1336.0
19	3	148.6	1336.0
20	3	148.6	1336.0
21	3	148.6	1336.0
22	3	148.6	1336.0
23	3	148.6	1336.0
24	3	148.6	1336.0
25	3	148.6	1336.0
1	4	138.8	1326.2
2	4	138.8	1326.2
3	4	138.8	1326.2
4	4	138.8	1326.2
5	4	138.8	1326.2
6	4	138.8	1326.2
7	4	138.8	1326.2
8	4	138.8	1326.2
9	4	138.8	1326.2
10	4	138.8	1326.2
11	4	138.8	1326.2
12	4	138.8	1326.2
13	4	138.8	1326.2
14	4	138.8	1326.2
15	4	138.8	1326.2
16	4	138.8	1326.2
17	4	138.8	1326.2
18	4	138.8	1326.2
19	4	138.8	1326.2
20	4	138.8	1326.2
21	4	138.8	1326.2
22	4	138.8	1326.2
23	4	138.8	1326.2
24	4	138.8	1326.2
25	4	138.8	1326.2
1	5	137.6	1325.0
2	5	137.6	1325.0

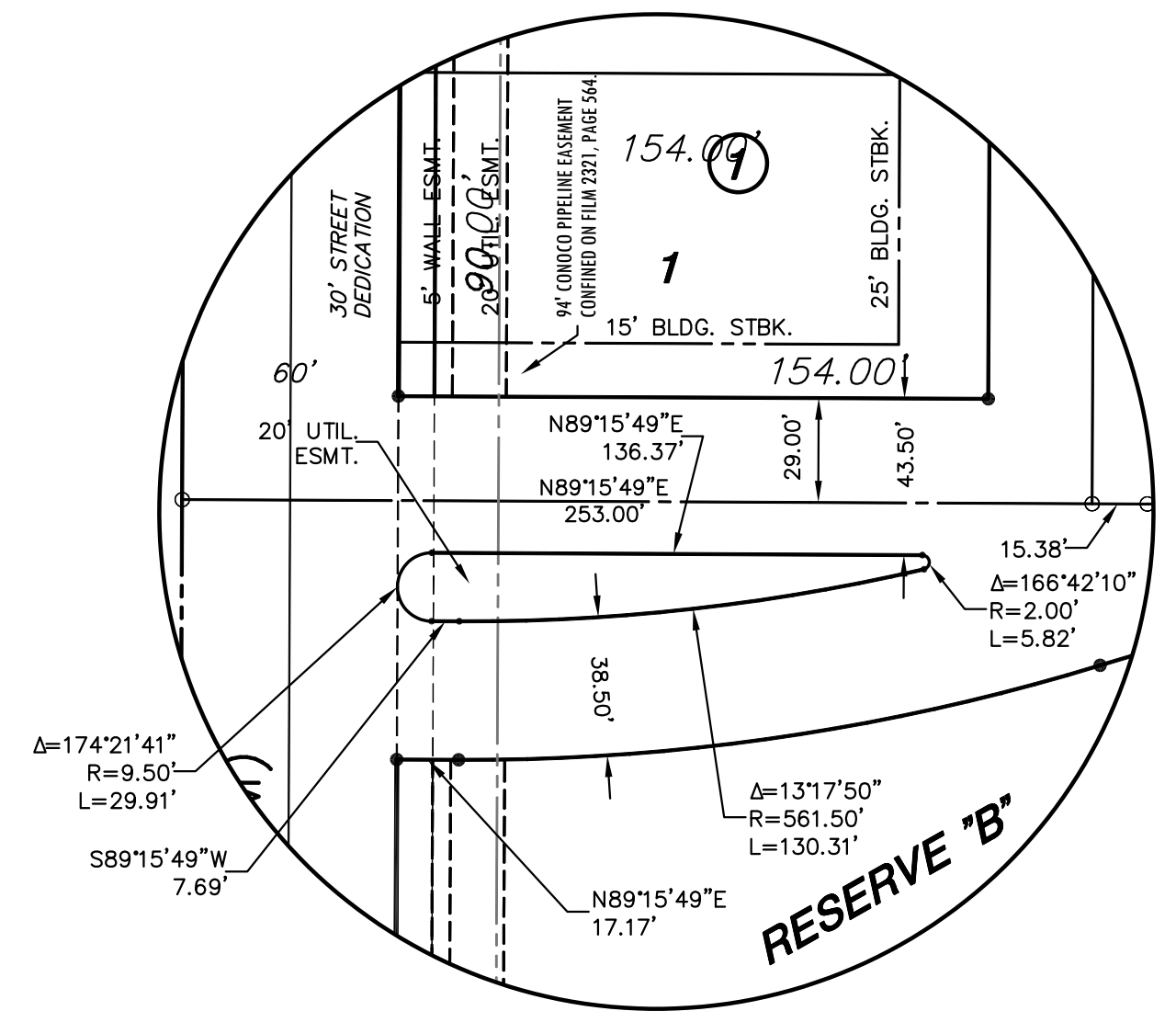
# FINAL PLAT

## COUNTRY HOLLOW ADDITION

### AN ADDITION TO WICHITA, SEDGWICK COUNTY, KANSAS

NW. Cor., NW 1/4, Sec. 26  
T27S, R2E, 6TH P.M.  
Set 5/8" Rebar w/ MKEC CLS 39 id cap

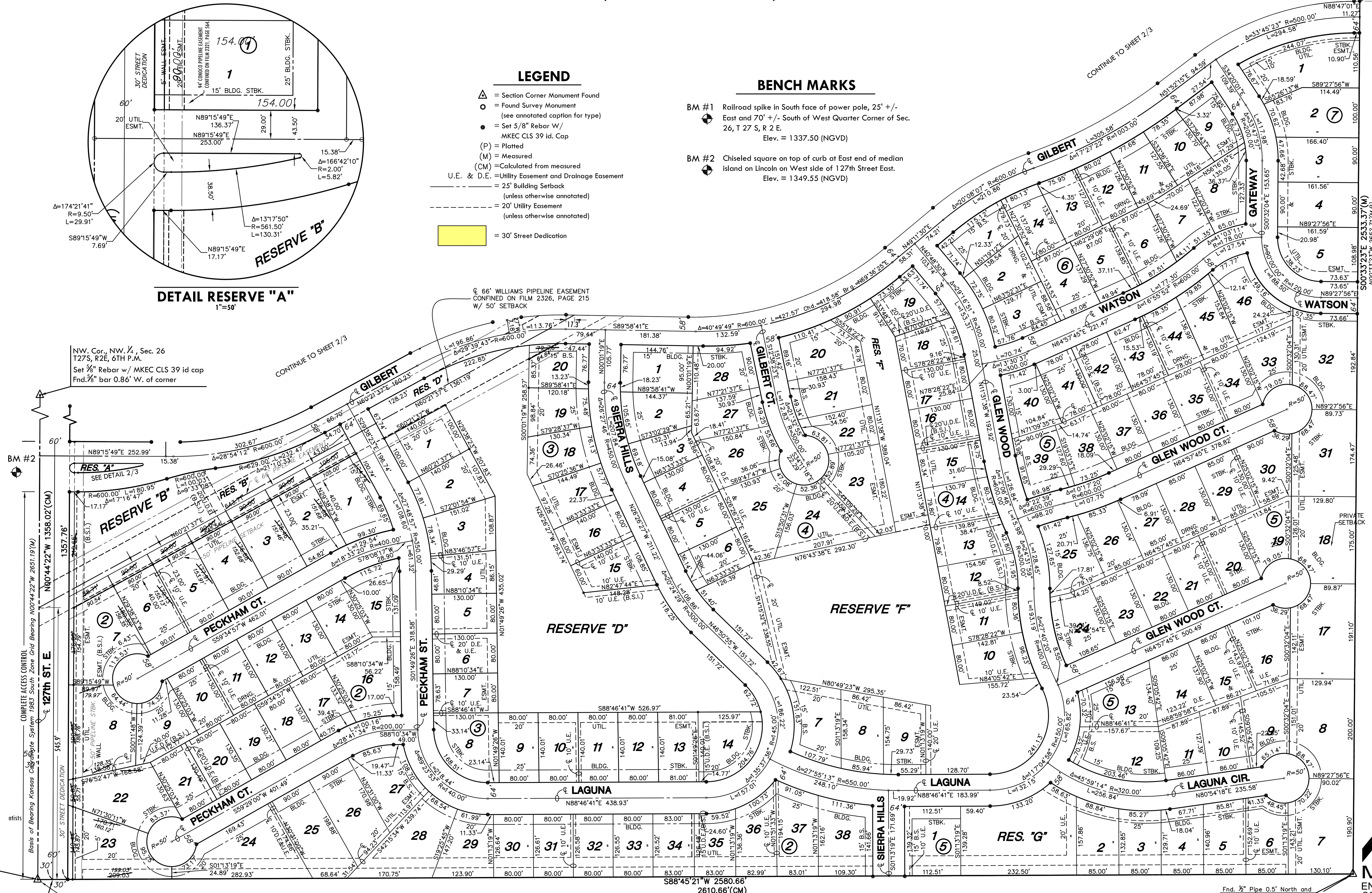
NE. Cor., NW 1/4, Sec. 26  
T27S, R2E, 6TH P.M.  
Fnd. 3/4" Rebar w/o id cap  
in thimble



**DETAIL RESERVE "A"**  
1"=50'

- #### LEGEND
- △ = Section Corner Monument Found
  - = Found Survey Monument (see annotated caption for type)
  - = Set 5/8" Rebar w/ MKEC CLS 39 id. Cap
  - (P) = Platted
  - (M) = Measured
  - (CM) = Calculated from measured
  - U.E. & D.E. = Utility Easement and Drainage Easement
  - = 25' Building Setback (unless otherwise annotated)
  - - - = 20' Utility Easement (unless otherwise annotated)
  - = 30' Street Dedication

- #### BENCH MARKS
- BM #1** Railroad spike in South face of power pole, 25' +/- East and 70' +/- South of West Quarter Corner of Sec. 26, T 27 S, R 2 E.  
Elev. = 1337.50 (NGVD)
- BM #2** Chiseled square on top of curb at East end of median island on Lincoln on West side of 127th Street East.  
Elev. = 1349.55 (NGVD)



SW. Cor., NW 1/4, Sec. 26  
T27S, R2E, 6TH P.M.  
Fnd. 1/2" Rebar w/o id cap

Fnd. 1/2" Pipe 0.5" North and  
SE. Cor., NW 1/4, Sec. 26  
T27S, R2E, 6TH P.M.  
Fnd. 1/2" Iron Pipe w/o id cap

