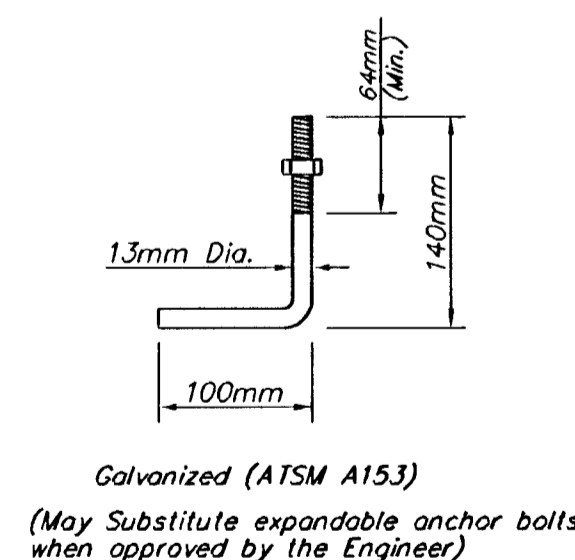
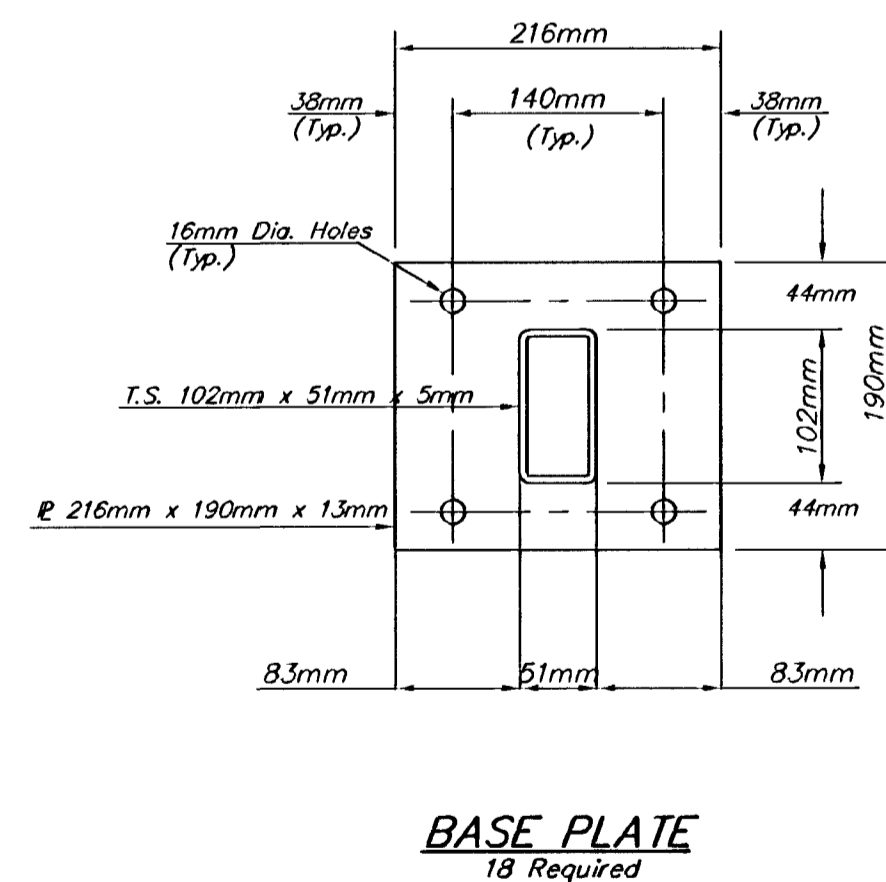
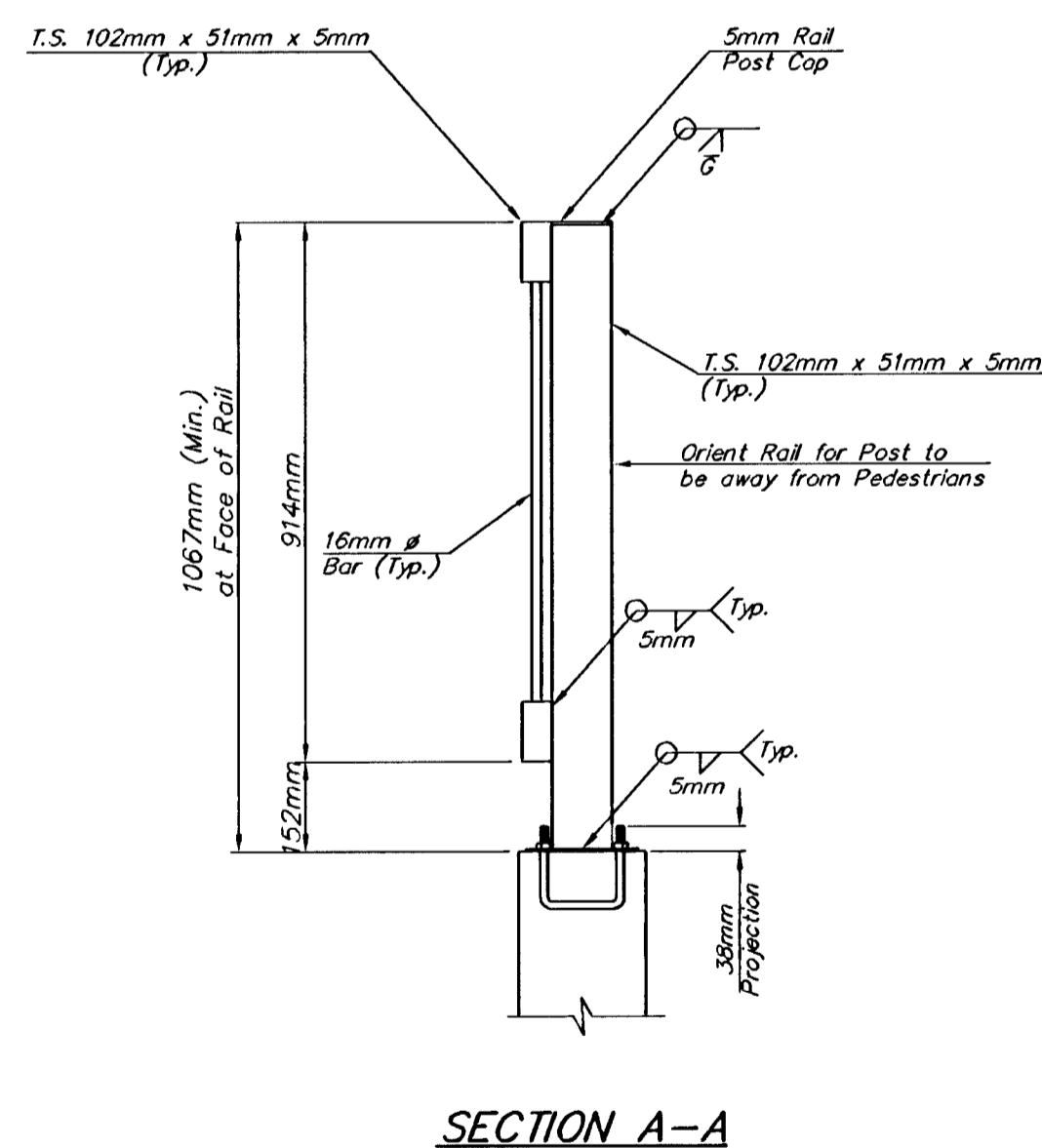
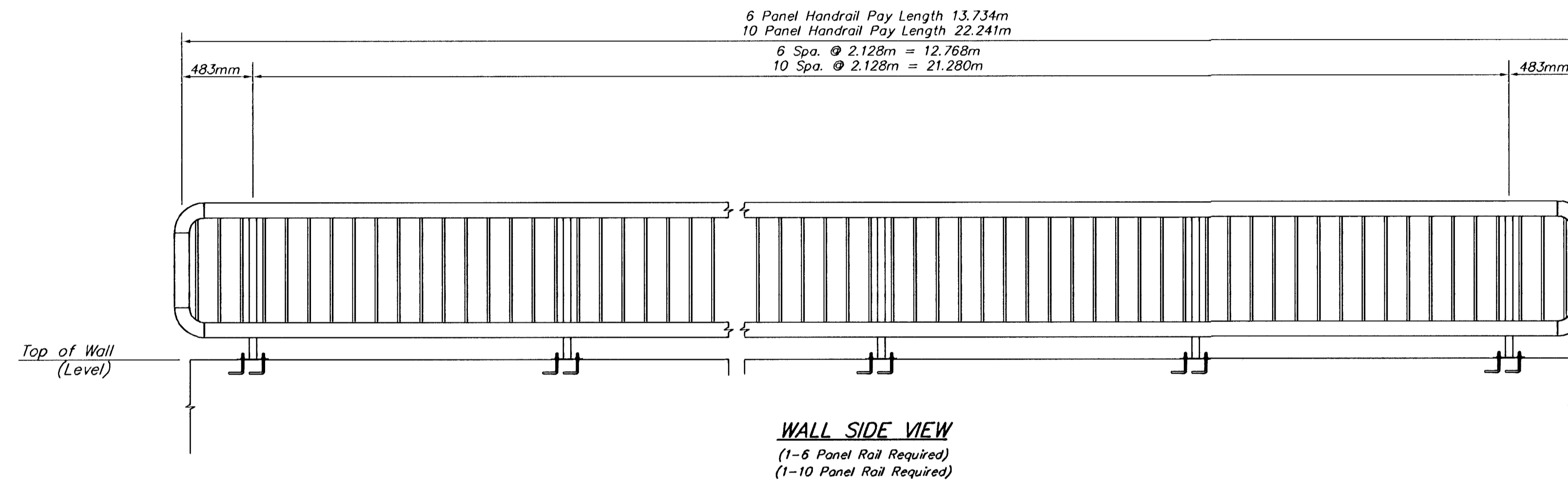
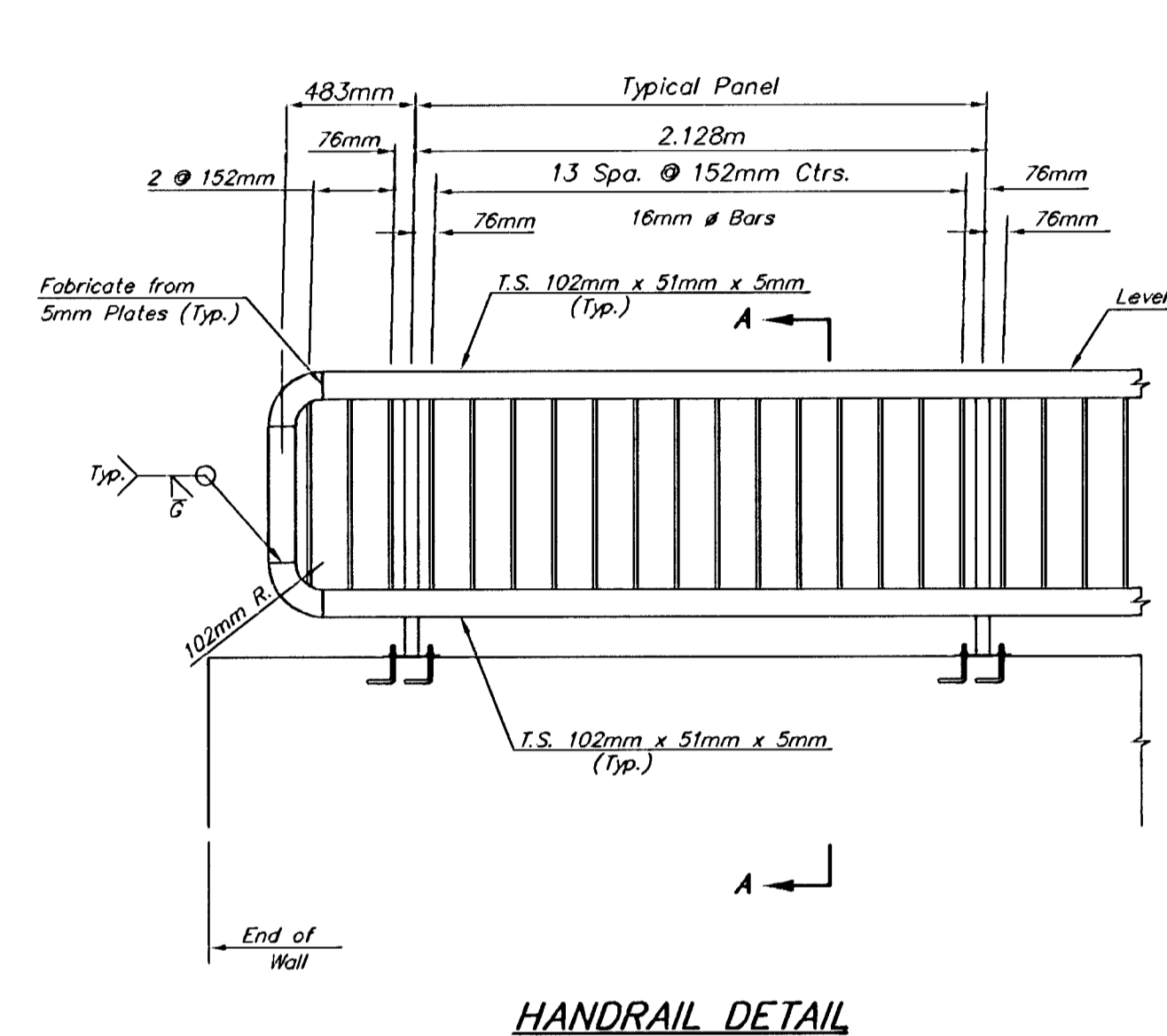


FHWA REGION NO.	STATE	PROJECT NO.	FISCAL YEAR	SHEET NO.	TOTAL SHEETS
7	KANSAS	87-N-0335-01	2002	8	47



ANCHOR BOLT
Orient to provide min. 51mm edge clearance to either wall face or adjacent bolts

GENERAL NOTES

The horizontal members of the rail and posts shall be hollow structural tubing. All structural steel and tubing shall comply to A.S.T.M. Designation A36 or A500 Grade B respectively.

Rail shall be fabricated in lengths as shown.

Posts and bars shall be set vertical and shimmed if required.

The handrail shall be painted shop and field with an inorganic zinc-vinyl paint system complying with the Standard Specifications for State Road and Bridge Construction, 1990 Edition Kansas Department of Transportation.

Material and construction shall conform to the Structural Welding Code A.W.S. D1.1-88.

Shop details must be submitted and approved by the Engineer.



PROJECT NUMBER		SHEET NAME		ENGINEERING DIRECTORY	
472-83799		Handrail		F:\Eng\LinMch\Details	
DESIGN	DRAWN	APPROVED	DATE	SCALE	BAUGHMAN NO.
TCA	TCA	JFB	July 2003	None	01 03 E944

CAPITAL IMPROVEMENT PROJECT
HANDRAIL DETAIL
LINCOLN AND MCLEAN INTERSECTION IMPROVEMENTS

BAUGHMAN COMPANY, P.A.
ENGINEERING, SURVEYING, & PLANNING
316-262-7271 • 315 ELLIS • WICHITA, KANSAS 67211

SHEET
8
OF
47