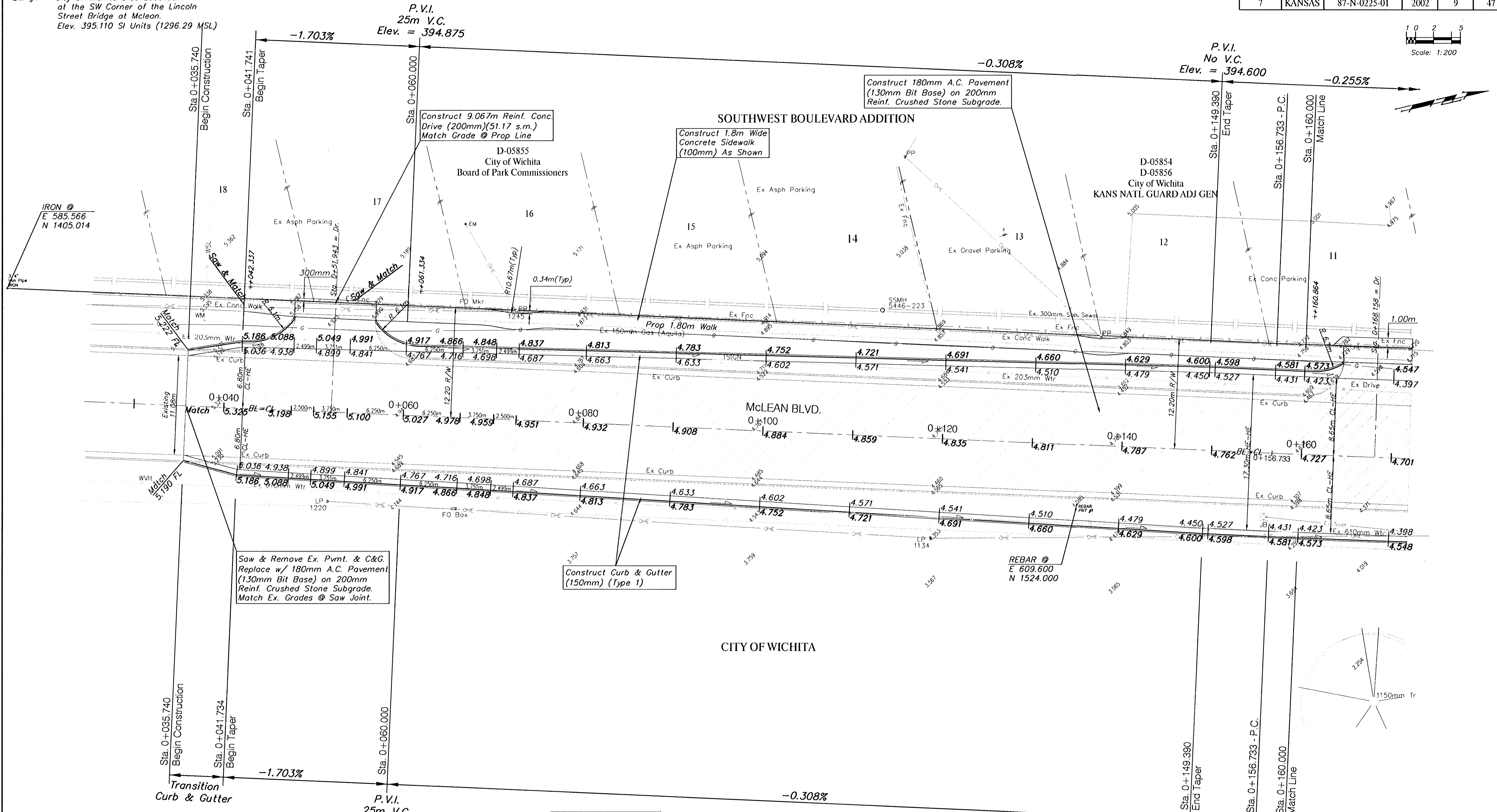
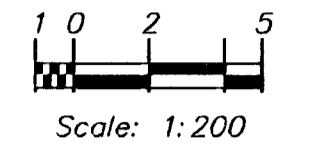


BENCHMARK  
 BM #1 - City of Wichita Disc Located  
 at the SW Corner of the Lincoln  
 Street Bridge at McLean.  
 Elev. 395.110 SI Units (1296.29 MSL)

FHWA REGION NO.	STATE	PROJECT NO.	FISCAL YEAR	SHEET NO.	TOTAL SHEETS
7	KANSAS	87-N-0225-01	2002	9	47



Ex SWS Manholes & Inlets in the Project Limits shall be removed/abandoned as necessary for construction and Ex. SWS pipes are to be plugged and abandoned in place per City Specifications unless otherwise noted.

NOTE:  
 Gas Meters, Utility poles, and Electrical junction pedestals, boxes, etc. are to be REMOVED and RELOCATED as necessary by the Respective Utility Company PRIOR TO CONSTRUCTION of this Project.

NOTE:  
 Pavement, Sidewalks Etc. To Be Removed Are Indicated By

PROJECT NUMBER 472-83799		SHEET NAME Pav01		ENGINEERING DIRECTORY F\Lin\Mcln\PAV	
DESIGN JFB	DRAWN KWR	APPROVED JFB	DATE July 2003	SCALE Noted	BAUGHMAN NO 01-03-E944

CAPITAL IMPROVEMENT PROJECT  
**MCLEAN BOULEVARD PAVING**  
 Sta. 0+035.740 to Sta. 0+160.000  
 LINCOLN AND MCLEAN INTERSECTION IMPROVEMENTS

**BAUGHMAN COMPANY, P.A.**  
 ENGINEERING, SURVEYING, & PLANNING  
 316-262-7271 • 315 ELLIS • WICHITA, KANSAS 67211

SHEET  
 OF  
 47

