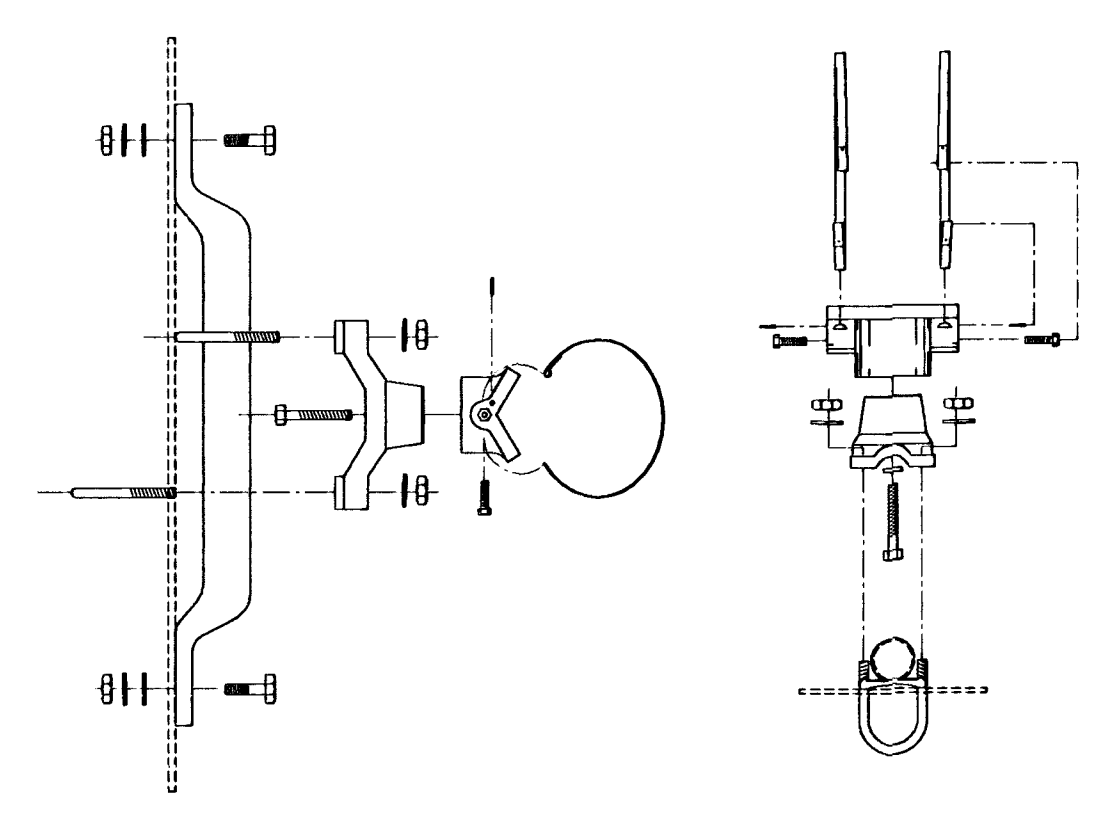
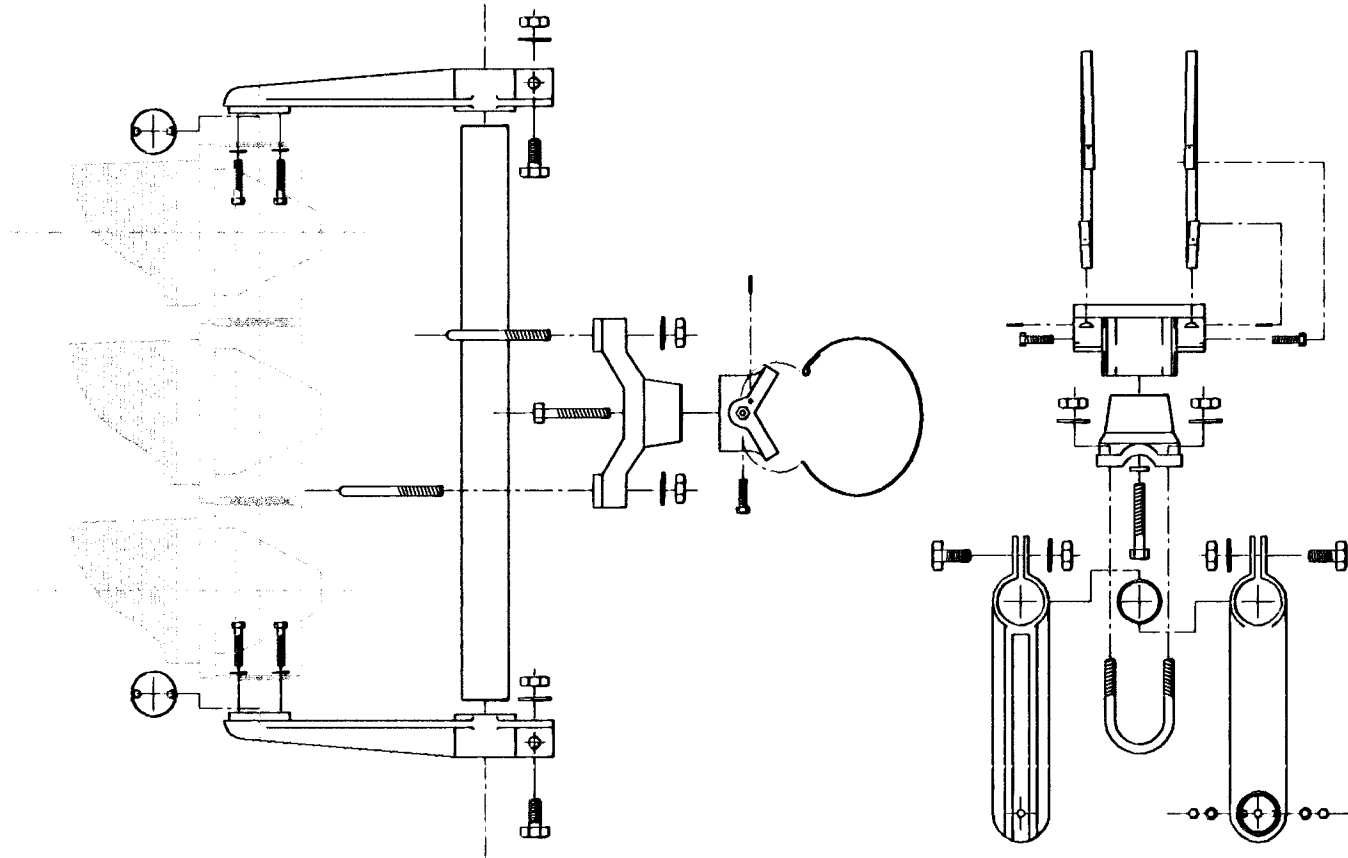


FHWA REGION NO.	STATE	PROJECT NO.	FISCAL YEAR	SHEET NO.	TOTAL SHEETS
7	KANSAS	87-N-0223-01	2002	26	47

BANDED SIGN MOUNTING BRACKET DETAIL

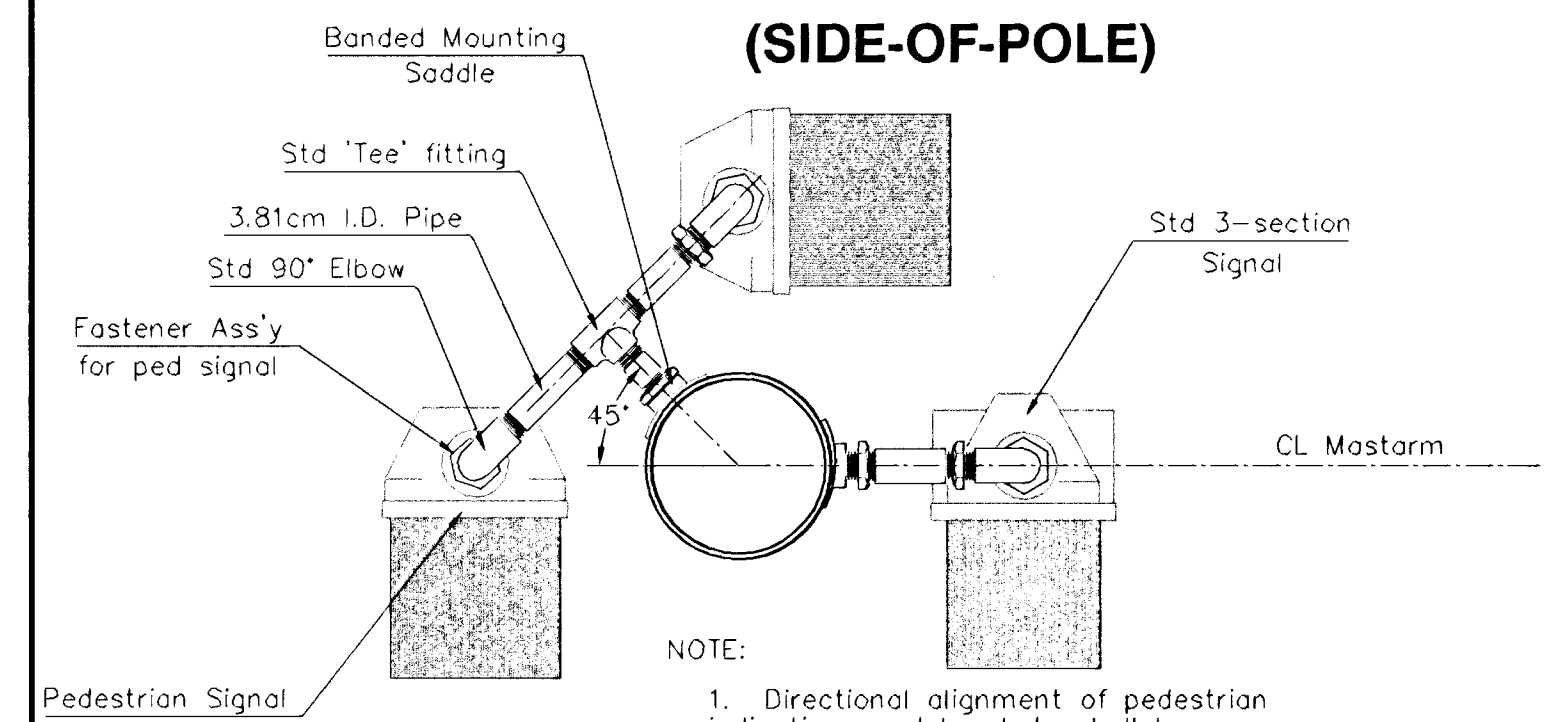


TYPE I SIGNAL MOUNTING BRACKET ASSEMBLY DETAIL



A **B**

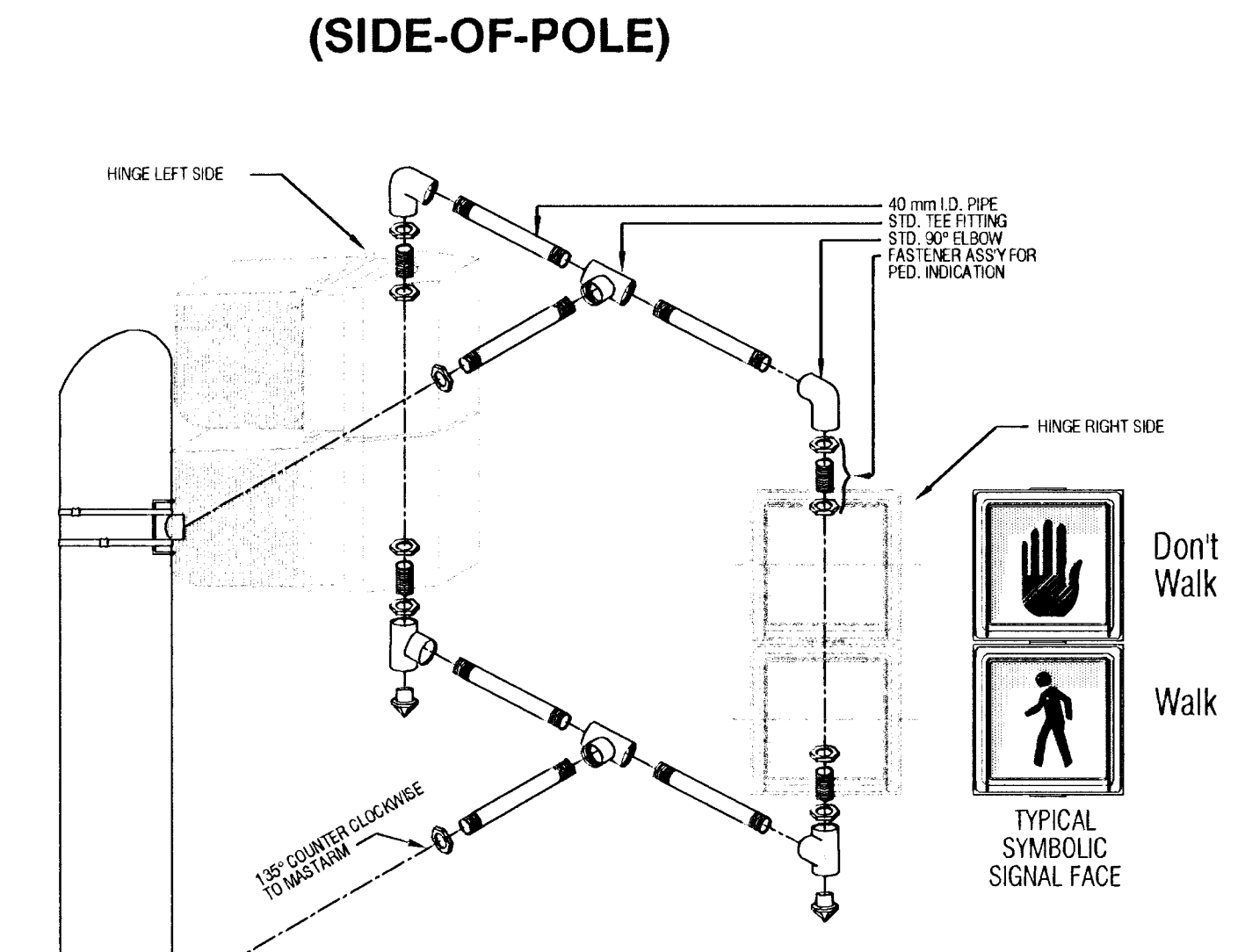
COMBINATION TYPE II & TYPE III SIGNAL MTG BKT ASSY (SIDE-OF-POLE)



- NOTE:
1. Directional alignment of pedestrian indications and brackets shall be determined in the field by the engineer.
 2. Through holes in the pole shall be drilled and well reamed to prevent cable chafing.

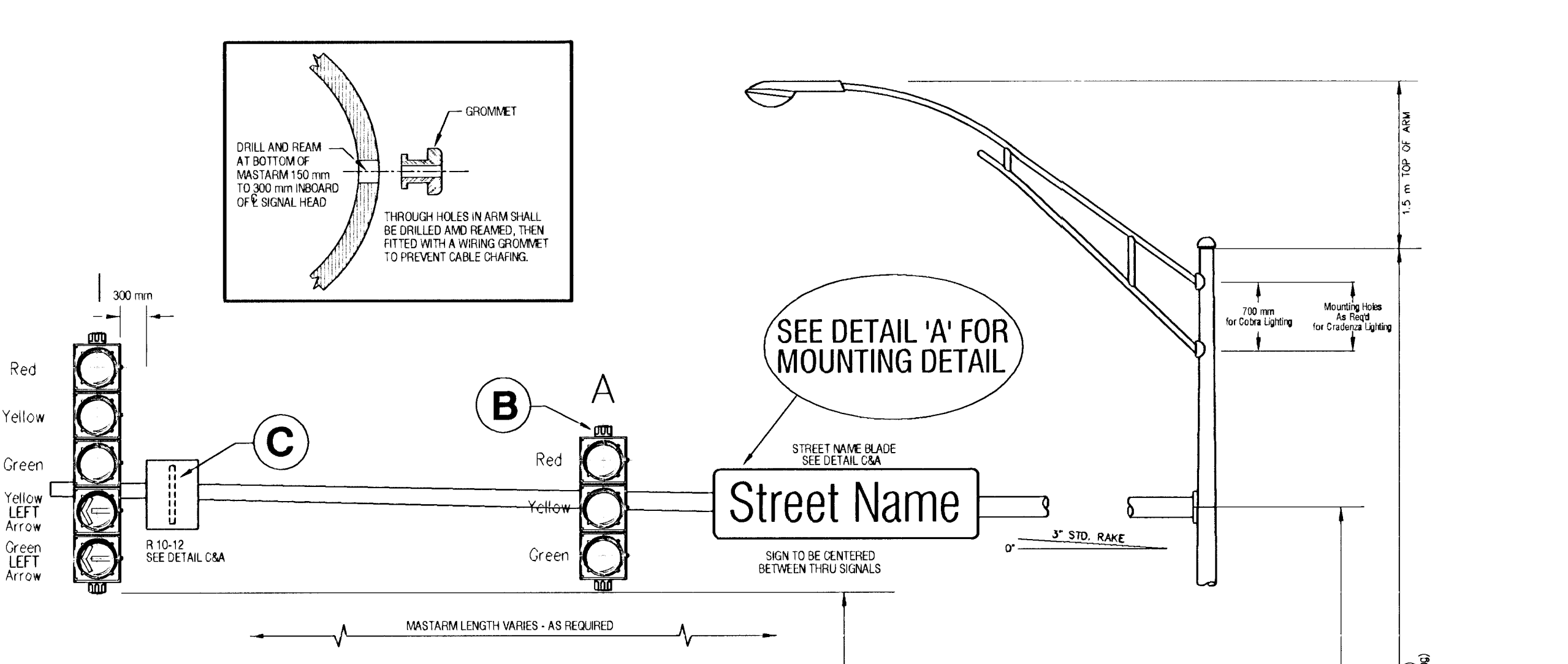
D

TYPE II SIGNAL MOUNTING BRACKET ASSEMBLY (SIDE-OF-POLE)

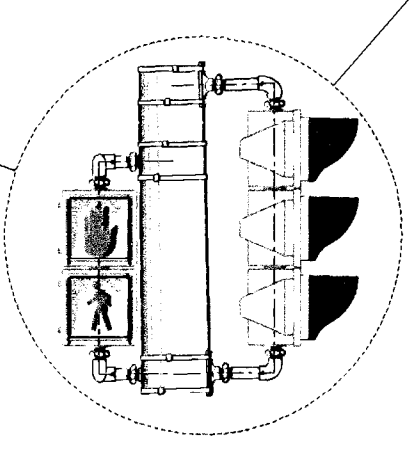


1. DIRECTIONAL ALIGNMENT OF PED. INDICATIONS & BRACKET(S) SHALL BE DETERMINED IN THE FIELD BY THE ENGINEER.
2. THROUGH HOLES IN THE POLE SHALL BE DRILLED AND WELL REAMED TO PREVENT CABLE CHAFING.
3. HINGE PEDESTRIAN SIGNAL DOORS AWAY FROM POLE.

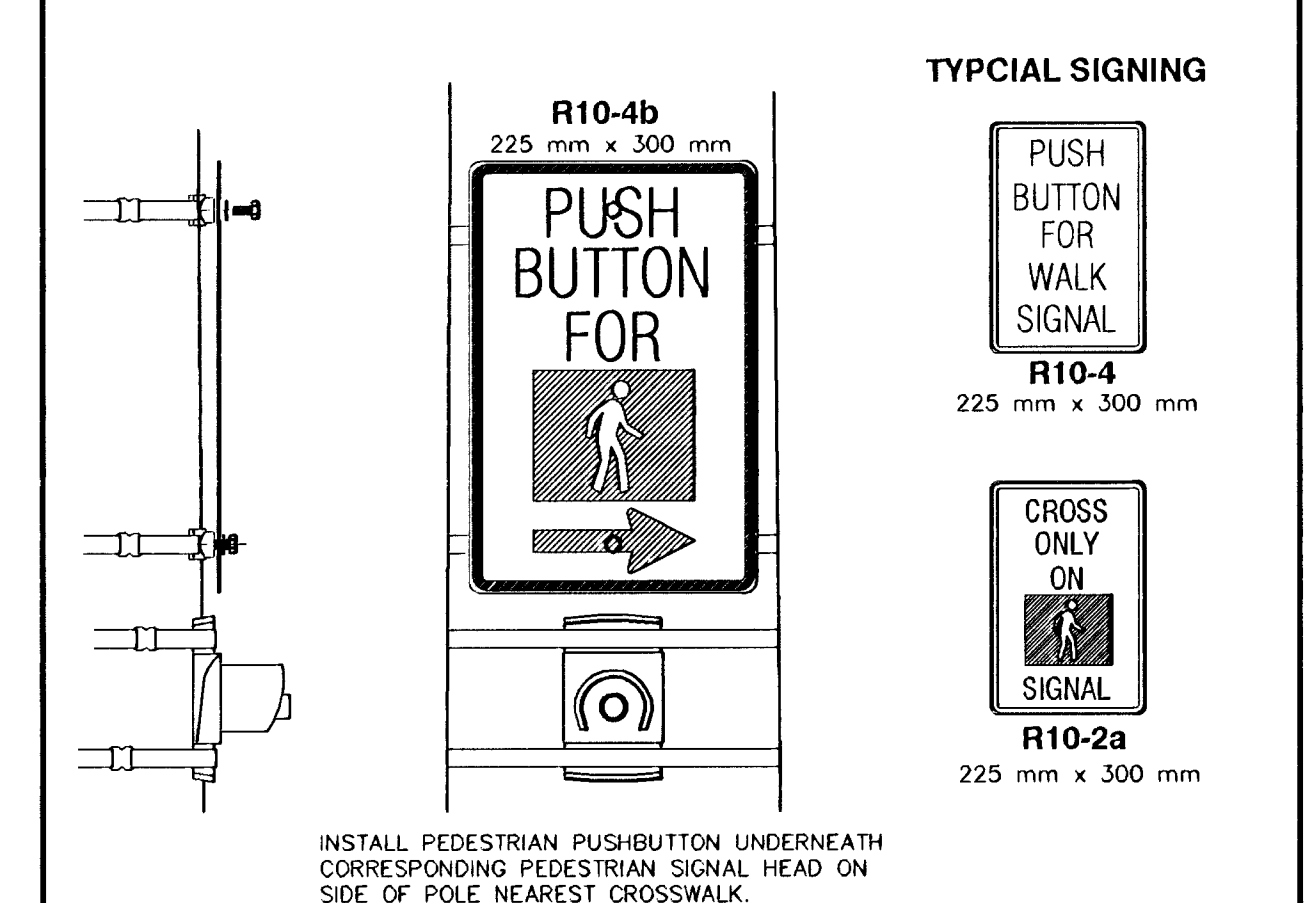
D



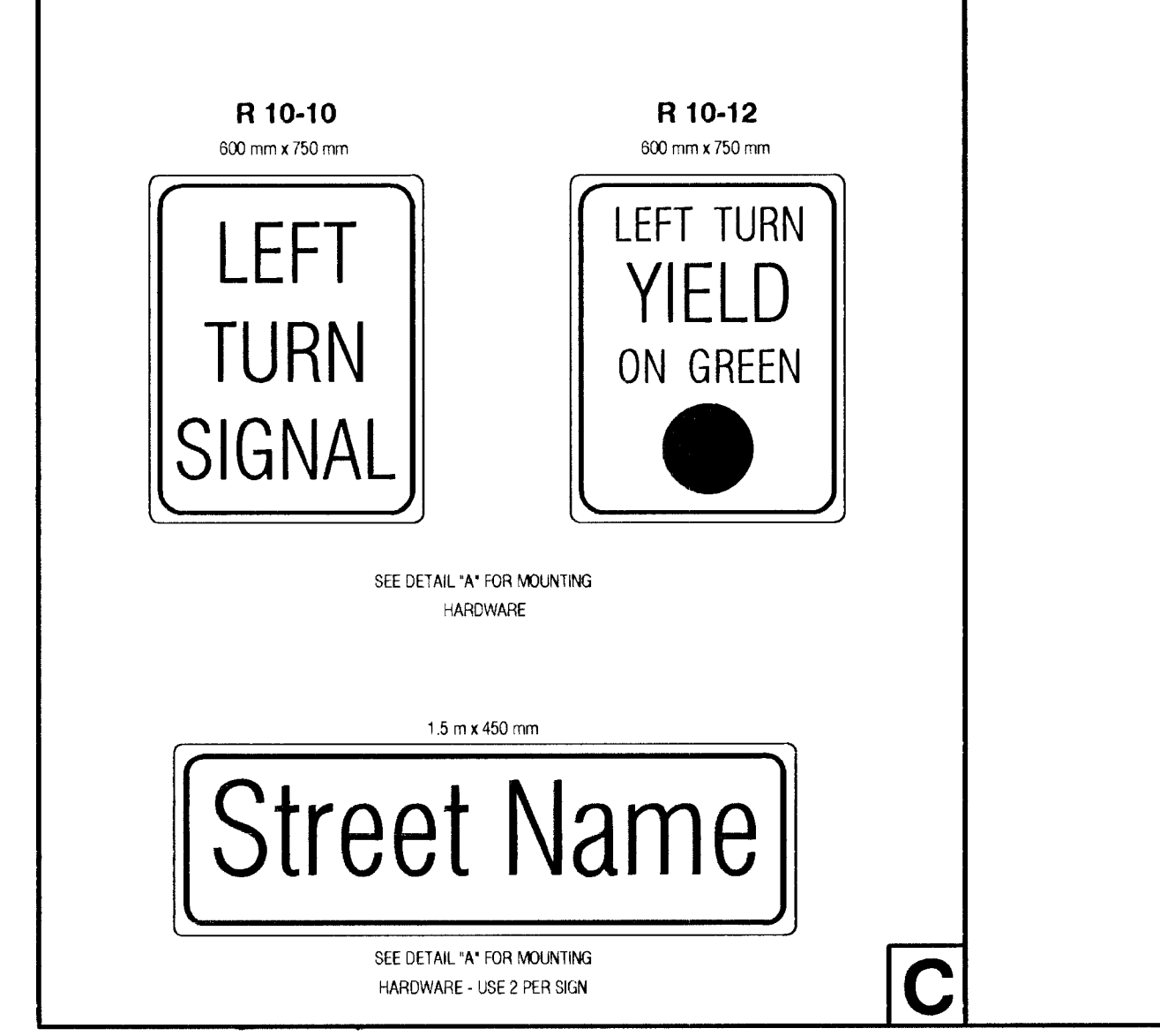
DETAIL 'D'



PEDESTRIAN PUSHBUTTON/SIGN UNIT DETAIL

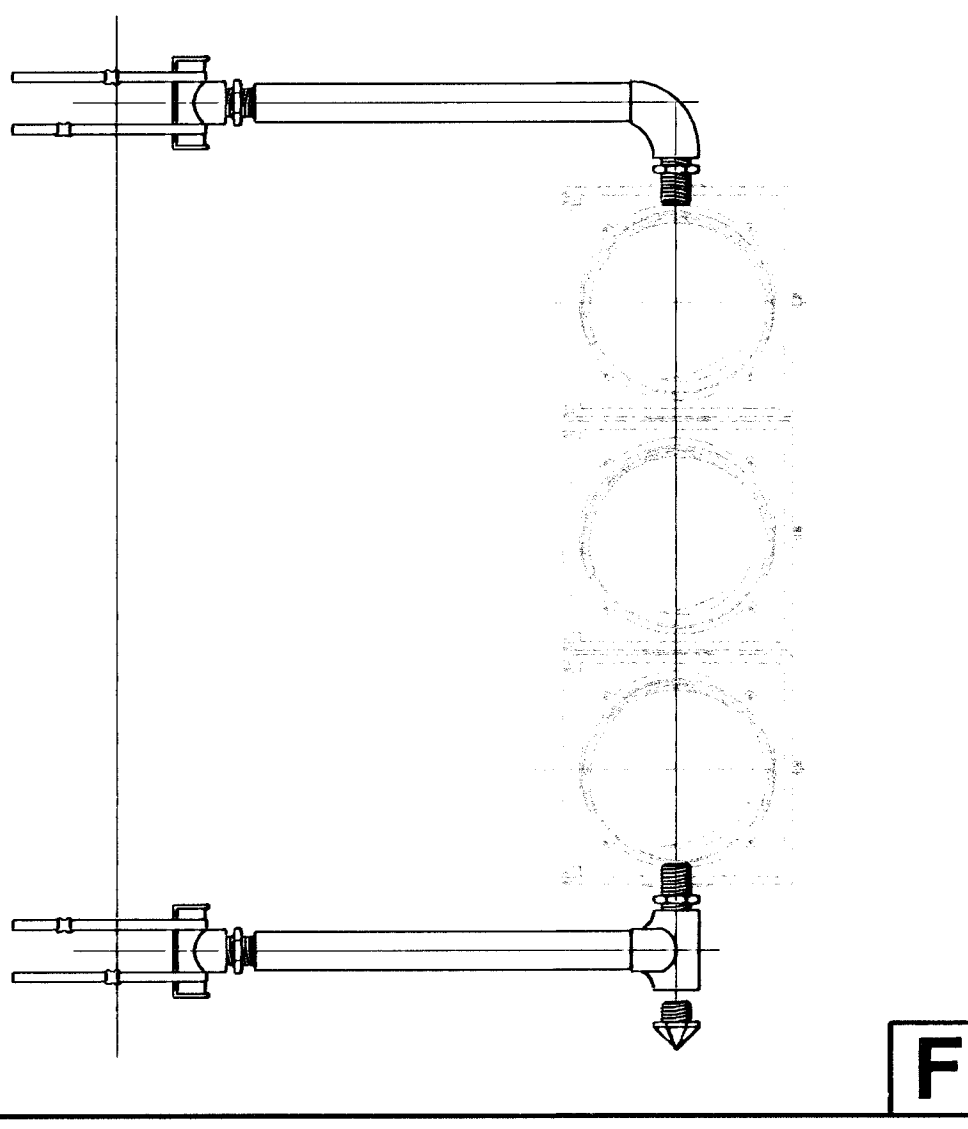


STANDARD SIGNING



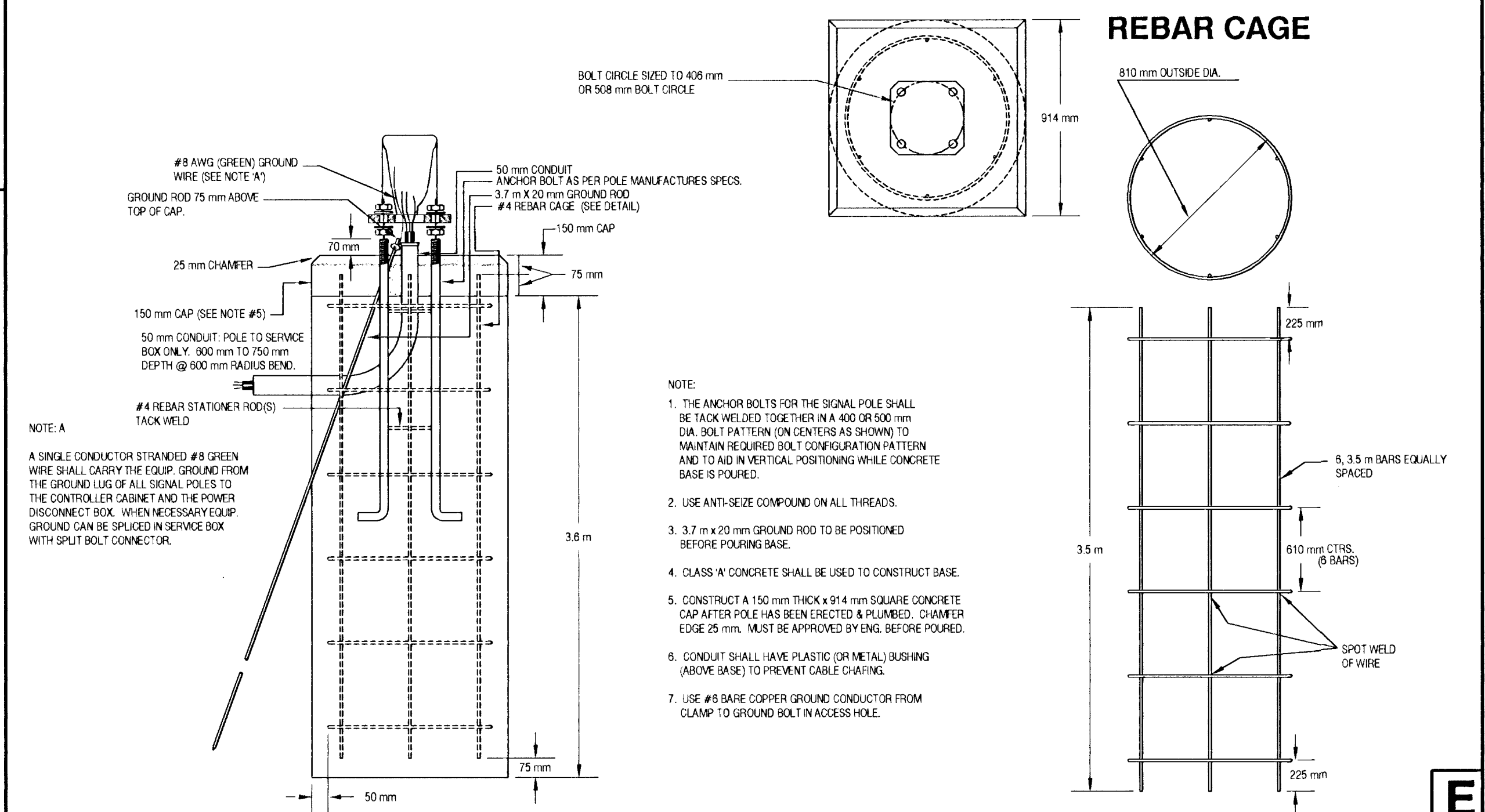
C

TYPE III SIDE-OF-POLE MOUNTING BRACKET ASSEMBLY



F

REINFORCED CONCRETE POLE BASE



- NOTE:
1. THE ANCHOR BOLTS FOR THE SIGNAL POLE SHALL BE TACK WELDED TOGETHER IN A 400 OR 500 mm DIA. BOLT PATTERN (ON CENTERS AS SHOWN) TO MAINTAIN REQUIRED BOLT CONFIGURATION PATTERN AND TO AID IN VERTICAL POSITIONING WHILE CONCRETE BASE IS POURED.
 2. USE ANTI-SEIZE COMPOUND ON ALL THREADS.
 3. 3.7 m x 20 mm GROUND ROD TO BE POSITIONED BEFORE POURING BASE.
 4. CLASS 'A' CONCRETE SHALL BE USED TO CONSTRUCT BASE.
 5. CONSTRUCT A 150 mm THICK x 914 mm SQUARE CONCRETE CAP AFTER POLE HAS BEEN ERECTED & PLUMBED. CHAMFER EDGE 25 mm. MUST BE APPROVED BY ENG. BEFORE POURED.
 6. CONDUIT SHALL HAVE PLASTIC (OR METAL) BUSHING (ABOVE BASE) TO PREVENT CABLE CHAFING.
 7. USE #6 BARE COPPER GROUND CONDUCTOR FROM CLAMP TO GROUND BOLT IN ACCESS HOLE.

E

PROJECT NUMBER 472-83799		SHEET NAME PPSP1-M		ENGINEERING DIRECTORY FAM/InMcIn/Traff	
DESIGN	DRAWN STAFF	APPROVED JFB	DATE July 2003	SCALE None	BAUGHMAN NO 01-03-E944

CAPITAL IMPROVEMENT PROJECT
SIGNAL POLE DETAILS
LINCOLN AND MCLEAN INTERSECTION IMPROVEMENTS

BAUGHMAN COMPANY, P.A.
ENGINEERING, SURVEYING, & PLANNING
316-262-7271 • 315 ELLIS • WICHITA, KANSAS 67211

SHEET
OF
26
47