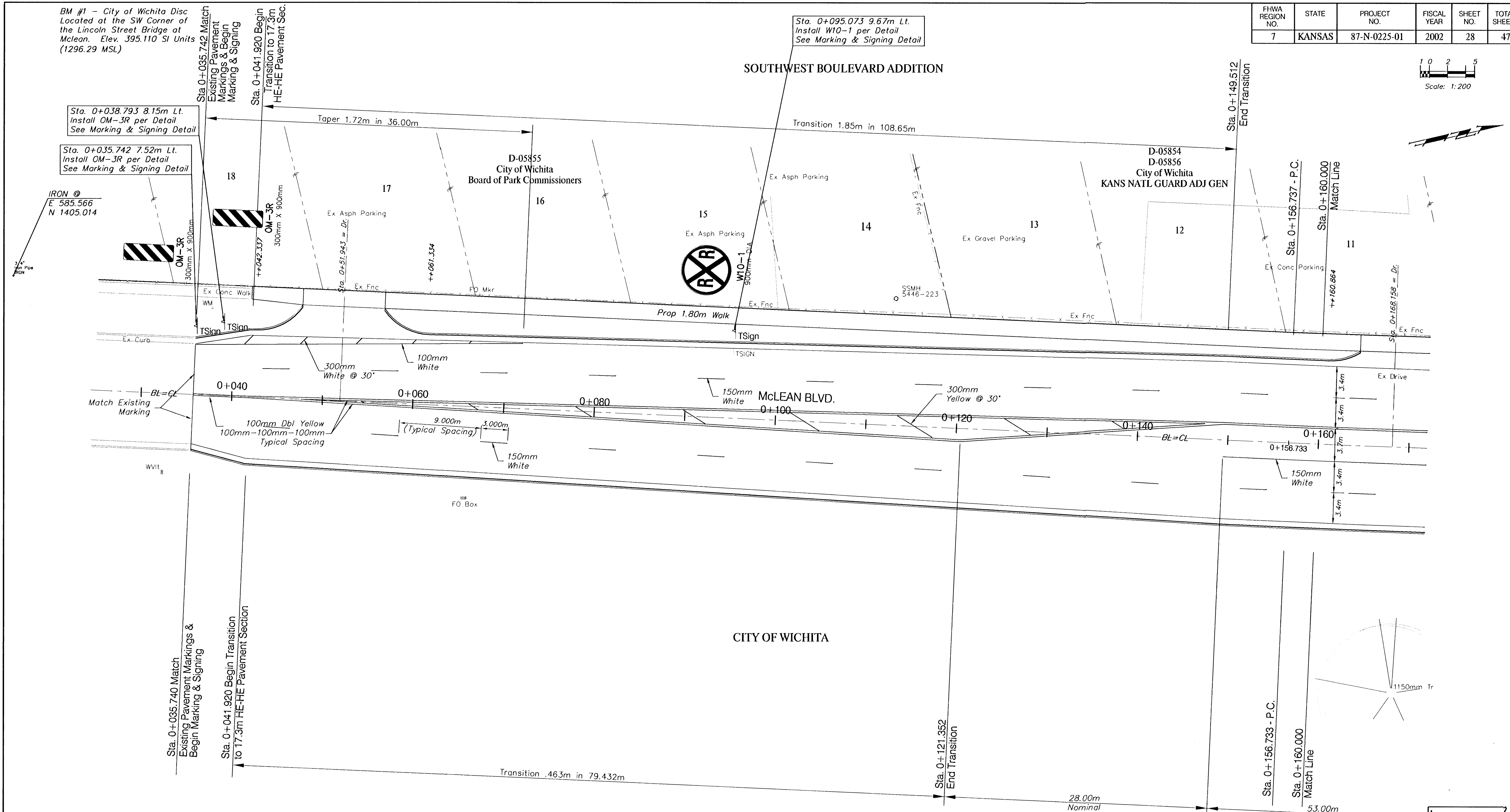
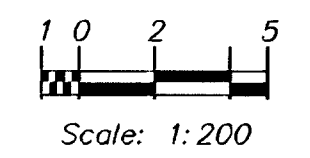


FHWA REGION NO.	STATE	PROJECT NO.	FISCAL YEAR	SHEET NO.	TOTAL SHEETS
7	KANSAS	87-N-0225-01	2002	28	47

BM #1 - City of Wichita Disc Located at the SW Corner of the Lincoln Street Bridge at McLean. Elev. 395.110 SI Units (1296.29 MSL)



	PAVEMENT MARKING ITEM	UNIT	TOTAL
1	150mm White	L.M.	70.48
2	100mm White	L.M.	36.04
3	600mm White	L.M.	4.47
4	100mm Yellow	L.M.	448.31
5	300mm Yellow	L.M.	20.10
* FOR INFORMATION ONLY			

PROJECT NUMBER 472-83799	SHEET NAME mark01	ENGINEERING DIRECTORY F:\Lin\Mcln\Traffic
DESIGN JFB	DRAWN TCA	APPROVED JFB
DATE July 2003	SCALE Noted	BAUGHMAN NO 01-03-E944

CAPITAL IMPROVEMENT PROJECT
PAVEMENT MARKING PLAN
LINCOLN AND MCLEAN INTERSECTION IMPROVEMENTS

BAUGHMAN COMPANY, P.A.
ENGINEERING, SURVEYING, & PLANNING
316-262-7271 • 315 ELLIS • WICHITA, KANSAS 67211

SHEET 28
OF 47

