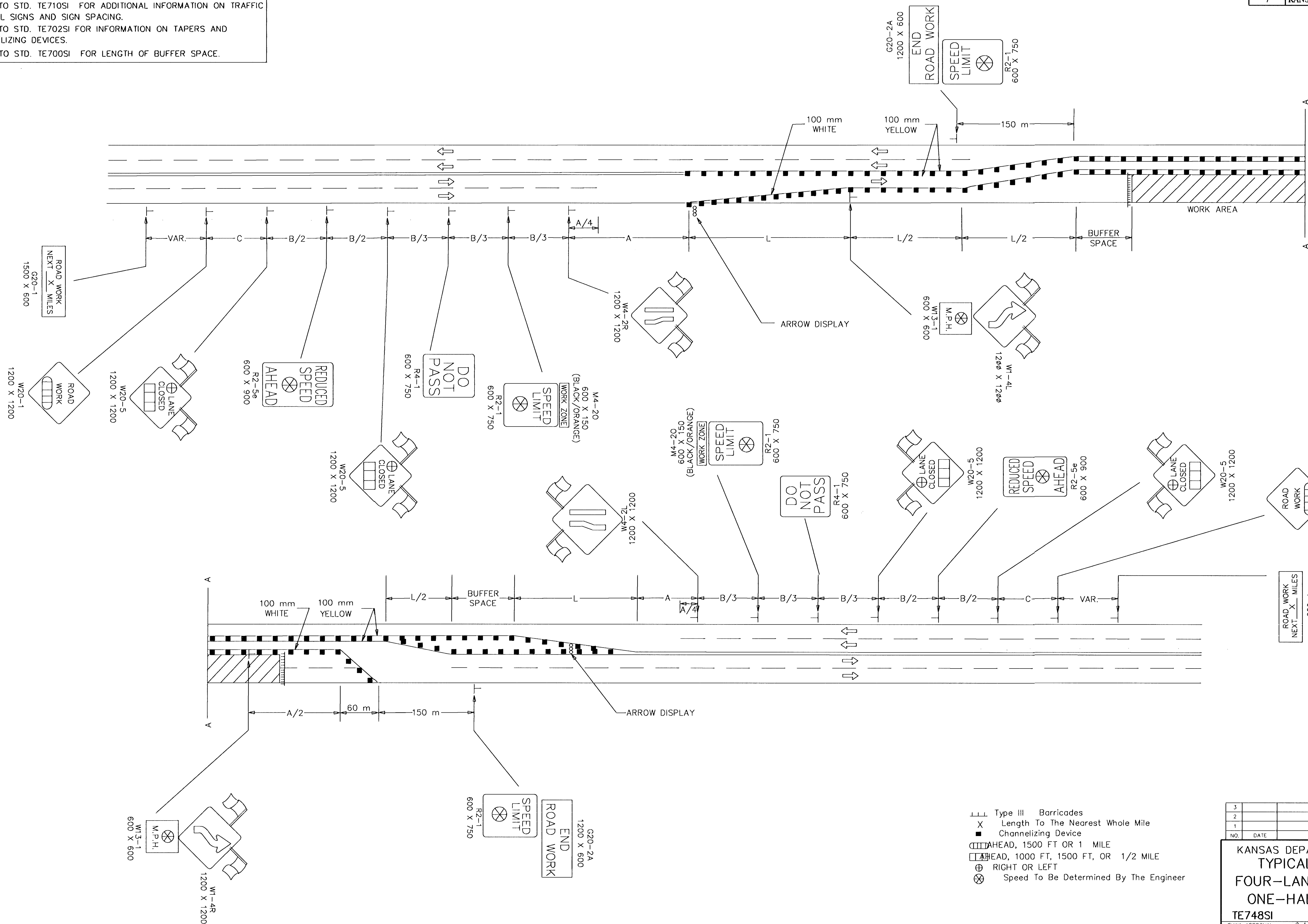


FHWA REGION NO.	STATE	PROJECT NO.	FISCAL YEAR	SHEET NO.	TOTAL SHEETS
7	KANSAS	87-N-0225-01	2002	34	47

REFER TO STD. TE710SI FOR ADDITIONAL INFORMATION ON TRAFFIC CONTROL SIGNS AND SIGN SPACING.
REFER TO STD. TE702SI FOR INFORMATION ON TAPERS AND CHANNELIZING DEVICES.
REFER TO STD. TE700SI FOR LENGTH OF BUFFER SPACE.



- Type III Barricades
- X Length To The Nearest Whole Mile
- Channelizing Device
- ⊞ AHEAD, 1500 FT OR 1 MILE
- ⊞ AHEAD, 1000 FT, 1500 FT, OR 1/2 MILE
- ⊞ RIGHT OR LEFT
- ⊗ Speed To Be Determined By The Engineer

3					
2					
1					
NO.	DATE	REVISION	BY	APP'D	
KANSAS DEPARTMENT OF TRANSPORTATION TYPICAL TRAFFIC CONTROL FOUR-LANE UNDIVIDED HIGHWAY ONE-HALF ROADWAY CLOSED TE748SI					
9/1/00					
FHWA APPROVAL	9-1-00	APP'D	Michael P. McKenna		
DESIGNED	L.E.R.	DETAILED	B.A.H.	QUANTITIES	TRACED
DESIGN CK.		DETAIL CK.		QUAN. CK.	TRACE CK.