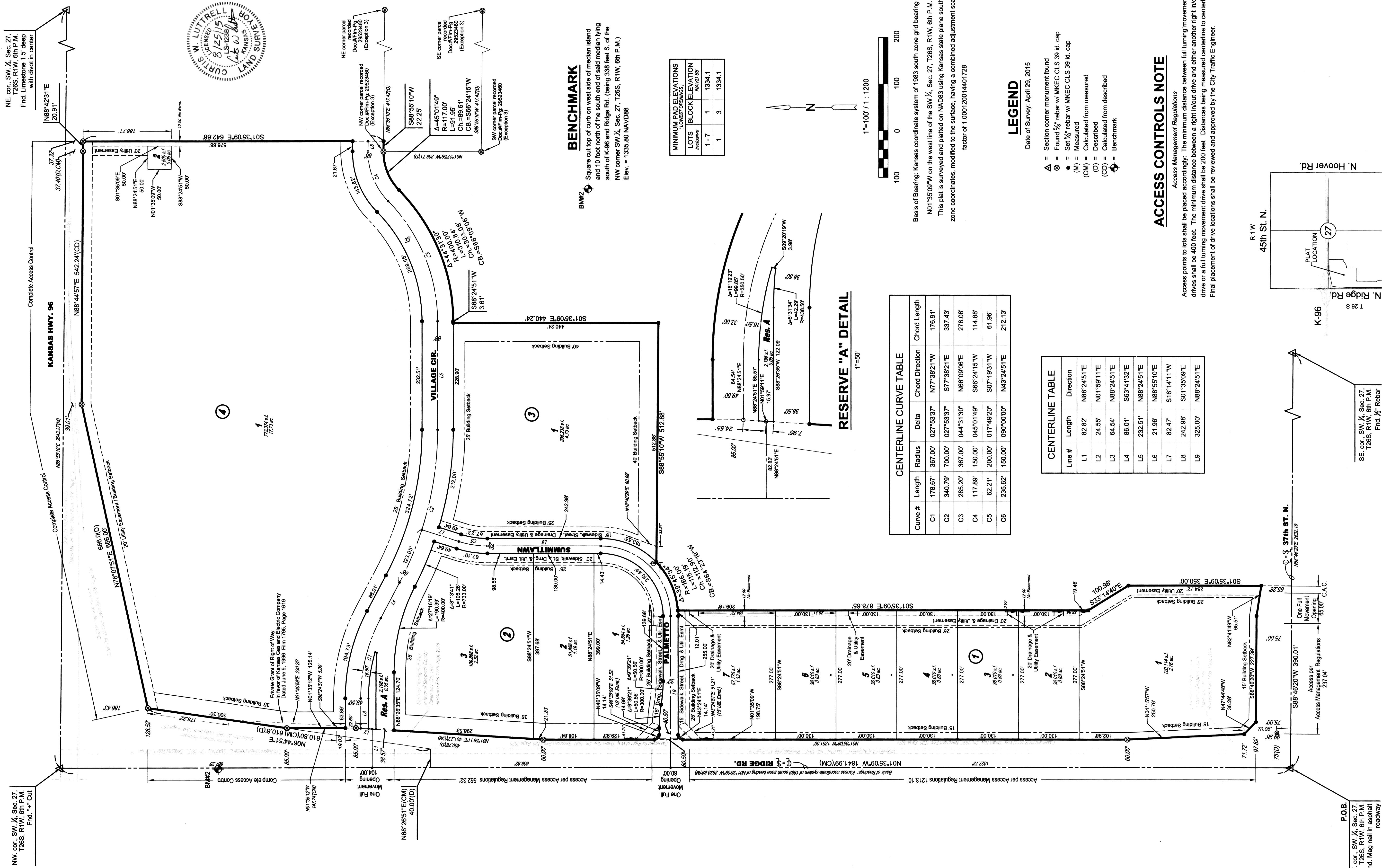


FINAL PLAT

ESTANCIA COMMERCIAL ADDITION

AN ADDITION TO WICHITA, SEDGWICK COUNTY, KANSAS



NW cor., SW 1/4, Sec. 27, T26S, R1W, 6th P.M. Fnd. Limestone 1.5' deep with divot in center

NE cor., SW 1/4, Sec. 27, T26S, R1W, 6th P.M. Fnd. Limestone 1.5' deep with divot in center

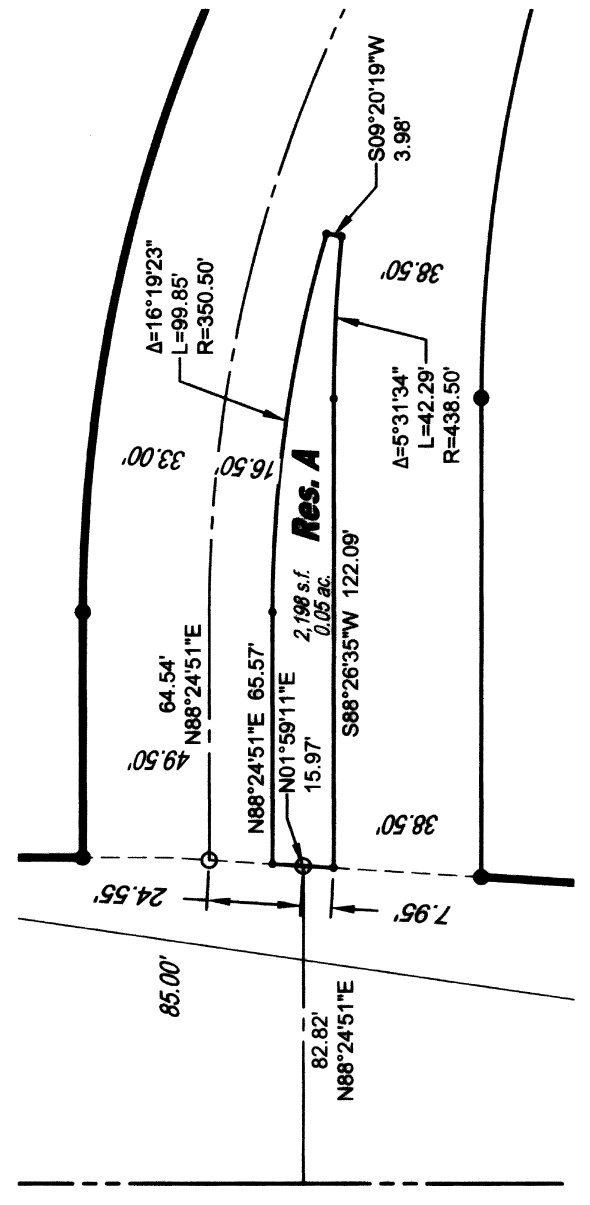


BENCHMARK

BW#2 Square cut top of curb on west side of median island and 10 foot north of the south end of said median lying south of K-96 and Ridge Rd. (being 338 feet S. of the NW corner SW 1/4, Sec. 27, T26S, R1W, 6th P.M.) Elev. = 1335.80 NAVD88

MINIMUM PAD ELEVATIONS (LOWEST GREENWAYS)		
LOTS	BLOCK ELEVATION	NAVD 88
1-7	1	1334.1
1	3	1334.1

RESERVE "A" DETAIL



Curve #	Length	Radius	Delta	Chord Direction	Chord Length
C1	178.67	367.00'	027°53'37"	N77°38'21"W	176.91'
C2	340.79	700.00'	027°53'37"	S77°38'21"E	337.43'
C3	285.20	367.00'	044°31'30"	N86°09'06"E	278.08'
C4	117.89	150.00'	045°01'49"	S86°24'15"W	114.88'
C5	62.21	200.00'	017°49'20"	S07°19'31"W	61.96'
C6	235.62	150.00'	090°00'00"	N43°24'51"E	212.13'

LEGEND

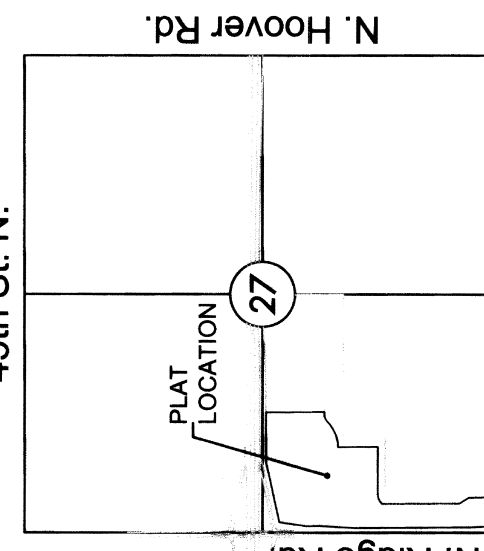
- △ = Section corner monument found
- ⊗ = Found 3/4" rebar w/ MKEC CLS 39 id. cap
- = Set 3/4" rebar w/ MKEC CLS 39 id. cap
- (M) = Measured
- (CM) = Calculated from measured
- (D) = Described
- ⊕ = Calculated from described
- ⊙ = Benchmark

ACCESS CONTROLS NOTE

Access Management Regulations
 Access points to lots shall be placed accordingly. The minimum distance between full turning movement drives shall be 400 feet. The minimum distance between a right in/out drive and either another right in/out drive or a full turning movement drive shall be 200 feet. Distances being measured centerline to centerline. Final placement of drive locations shall be reviewed and approved by the City Traffic Engineer.

CENTERLINE TABLE

Line #	Length	Direction
L1	82.82	N88°24'51"E
L2	24.55	N01°59'11"E
L3	64.54	N88°24'51"E
L4	86.01	S63°41'32"E
L5	232.51	N88°24'51"E
L6	21.96	N88°55'10"E
L7	82.47	S16°14'11"W
L8	242.98	S01°35'09"E
L9	325.00	N88°24'51"E



VICINITY MAP



P.O.B.
 SW cor., SW 1/4, Sec. 27, T26S, R1W, 6th P.M. Fnd. Mag nail in asphalt roadway