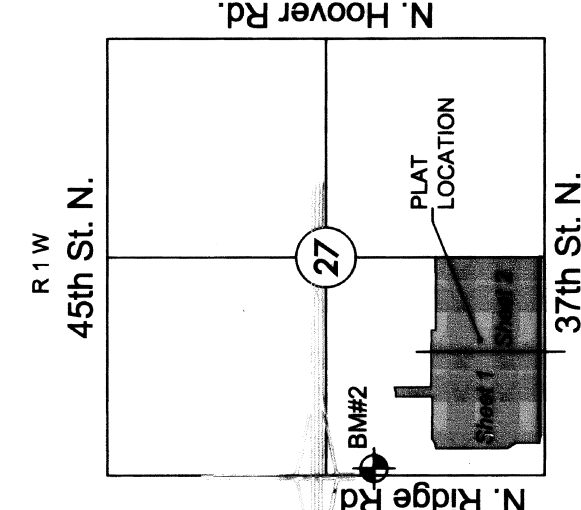


FINAL PLAT

ESTANCIA ADDITION

AN ADDITION TO WICHITA, SEDGWICK COUNTY, KANSAS

A=16°23'29"
R=400.00
L=144.04'
CB=180°13'08"E



VICINITY MAP



Date of Survey, April 29, 2015

1"=60' / 1:720



Basis of Bearing: Kansas coordinate system of 1983
south zone grid bearing of N88°46'20"E on the south
line of the SW 1/4, Sec. 27, T26S, R1W, 6th P.M.
This plat is surveyed and platted on NAD83 using
Kansas state plane south zone coordinates, modified to
the surface, having a combined adjustment scale factor
of 1.000120014401728

- △ = Section corner monument found
- ⊙ = Found 3/4" rebar w/ MKEC CLS 39 id. cap
- = Set 3/4" rebar w/ MKEC CLS 39 id. cap
- (M) = Measured
- (CM) = Calculated from measured
- (D) = Described
- ⊙ = Benchmark
- U.E. = Utility Easement
- D.E. = Drainage Easement

BENCHMARK

BM#2
Square cut top of curb on west side of median island
and 10 foot north of the south end of said median lying
south of K-96 and Ridge Rd. (being 336 feet S. of the
NW corner SW 1/4, Sec. 27, T26S, R1W, 6th P.M.)
Elev. = 1335.80 NAVD88

MINIMUM ROAD ELEVATIONS (LOWEST FORMAS)	LOTS	BLOCK ELEVATION M412.69
15-41	3	1334.1
48-56	3	1334.1
64-74	3	1334.1

NW cor., SW 1/4,
Sec. 27, T26S,
R1W, 6th P.M.
Frd. "Y" Cut

P.O.C.
SW cor., SW 1/4, Sec. 27,
T26S, R1W, 6th P.M.
Frd. Mag nail in asphalt
roadway

SE cor., SW 1/4, Sec. 27,
T26S, R1W, 6th P.M.
Frd. "Y" Rebar

Complete Access Control 1308.08'
Basis of Bearings: Kansas coordinate system of 1983 south zone bearing of N88°46'20"E
1794.69'

