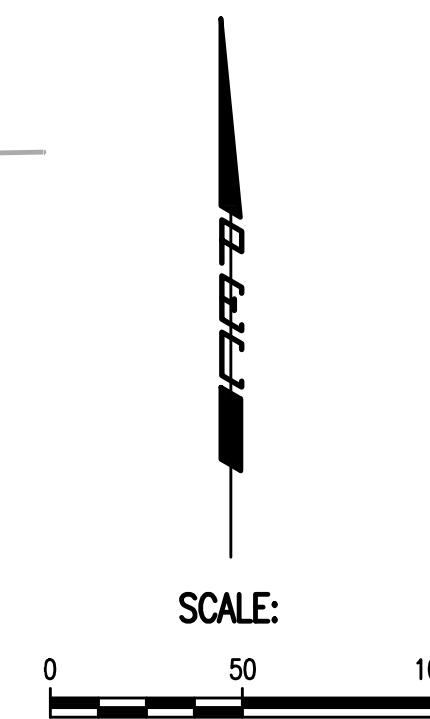


GENERAL NOTES

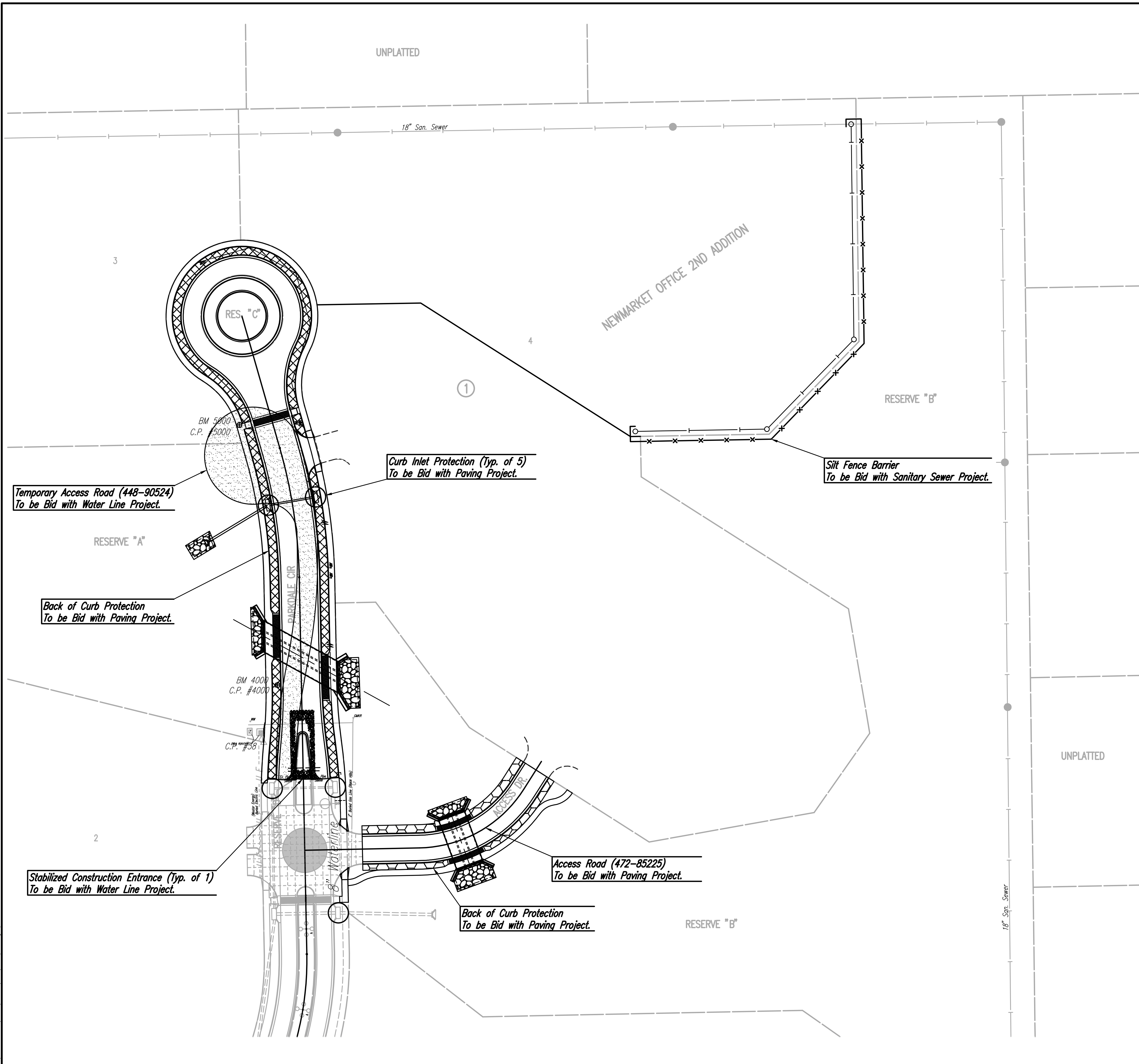
- CONTRACTOR SHALL INSTALL AND MAINTAIN EROSION PROTECTION THROUGHOUT THE ENTIRE PROJECT. THE FOLLOWING QUANTITIES ARE FOR INFORMATION ONLY, AND SHALL BE INCLUDED IN THE EROSION CONTROL LUMP SUM BID ITEMS FOR EACH RESPECTIVE PART. EROSION PROTECTION SHALL BE INCLUDED IN THE BID AS FOLLOWS:
 

<b>SANITARY SEWER (468-84752)</b>	
SILT FENCE BARRIER	535 L.F.
<b>WATER LINE (448-90524)</b>	
STABILIZED CONSTRUCTION ENTRANCE	1 EACH
<b>PAVING AND DRAINAGE (472-84991)</b>	
CURB INLET PROTECTION	5 EACH
BACK OF CURB PROTECTION	1,010 L.F.
<b>ACCESS DRIVE (472-85225)</b>	
BACK OF CURB PROTECTION	333 L.F.
- THE EROSION CONTROL DEVICES SHOWN ON THIS SHEET ARE CONSIDERED MINIMUM STANDARDS. WHENEVER SEDIMENT ENTERS THE STREETS, STORM SEWERS, DITCHES, OR PONDS, CONTRACTOR WILL INSTALL ADDITIONAL DEVICES, AS NEEDED, TO CORRECT THE PROBLEM.
- THE EROSION CONTROL DEVICES SHOWN HEREON MUST BE IN PLACE AT ALL TIMES DURING CONSTRUCTION UNTIL SUCH TIME AS THE SITE IS REESTABLISHED WITH PAVING OR GRASS. TEMPORARY OR PERMANENT SEEDING AND MULCH WILL BE INSTALLED WHEN EARTHWORK ACTIVITIES CEASE IN AN AREA FOR 14 DAYS OR MORE.
- ANY MUD INADVERTENTLY TRACKED ONTO ANY STREET SHALL BE CLEANED UP BY THE CONTRACTOR, AT THE END OF EACH DAY'S WORK, OR AS DIRECTED BY THE FIELD ENGINEER.
- CONTRACTOR TO FURNISH A TRUCK WASH-OUT PIT TO BE PLACED AT A CONVENIENT LOCATION THAT DOES NOT CONFLICT WITH CONSTRUCTION. CONTRACTOR SHALL CLEAN OUT AND BACKFILL PIT PRIOR TO FINAL INSPECTION. LOCATION SHALL BE APPROVED BY THE FIELD ENGINEER.



LEGEND

- SILT FENCE (TO BE BID WITH SANITARY SEWER PROJECT)
- STABILIZED CONSTRUCTION ENTRANCE (TO BID WITH WATER LINE PROJECT)
- BACK OF CURB PROTECTION-PARKDALE CIRCLE
- BACK OF CURB PROTECTION-ACCESS DRIVE
- PROPOSED CURB INLET PROTECTION
- PROPOSED WATER MAIN
- PROPOSED SANITARY SEWER w/MANHOLE
- PROPOSED STORM WATER SEWER



Served 10-29-2015 1:08:57 PM by RET  
 Plot Scale 1:1 11-02-2015 9:07:43 AM by RET  
 U:\Wichita-Civil\2015\15120\001\Drawings\15120-001-17c-EROSION CONTROL PLAN

No.	Revision	By	Date
NEWMARKET OFFICE 2ND-PHASE 2 PAVING AND INCIDENTAL DRAINAGE IMPROVEMENTS <b>EROSION CONTROL PLAN</b> GARY JANZEN, P.E. - CITY ENGINEER CITY OF WICHITA PROJECT NO. 472-84991			
		PROFESSIONAL ENGINEERING CONSULTANTS, P.A. 303 SOUTH TOPEKA WICHITA, KS 67202 316-262-2691 www.pec1.com	
Designed by	BMM, TBK	Job No.	35-15120-001
Drawn by	BJS	Date	November 2015
			Sht. 17 of 36