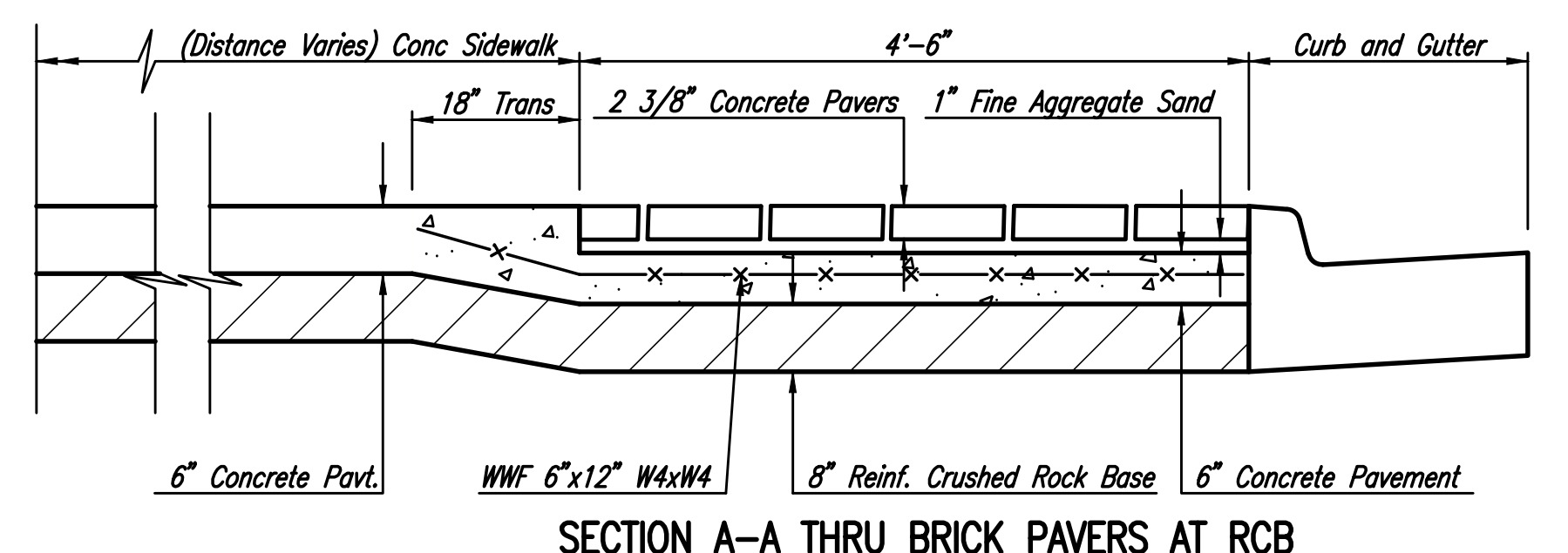
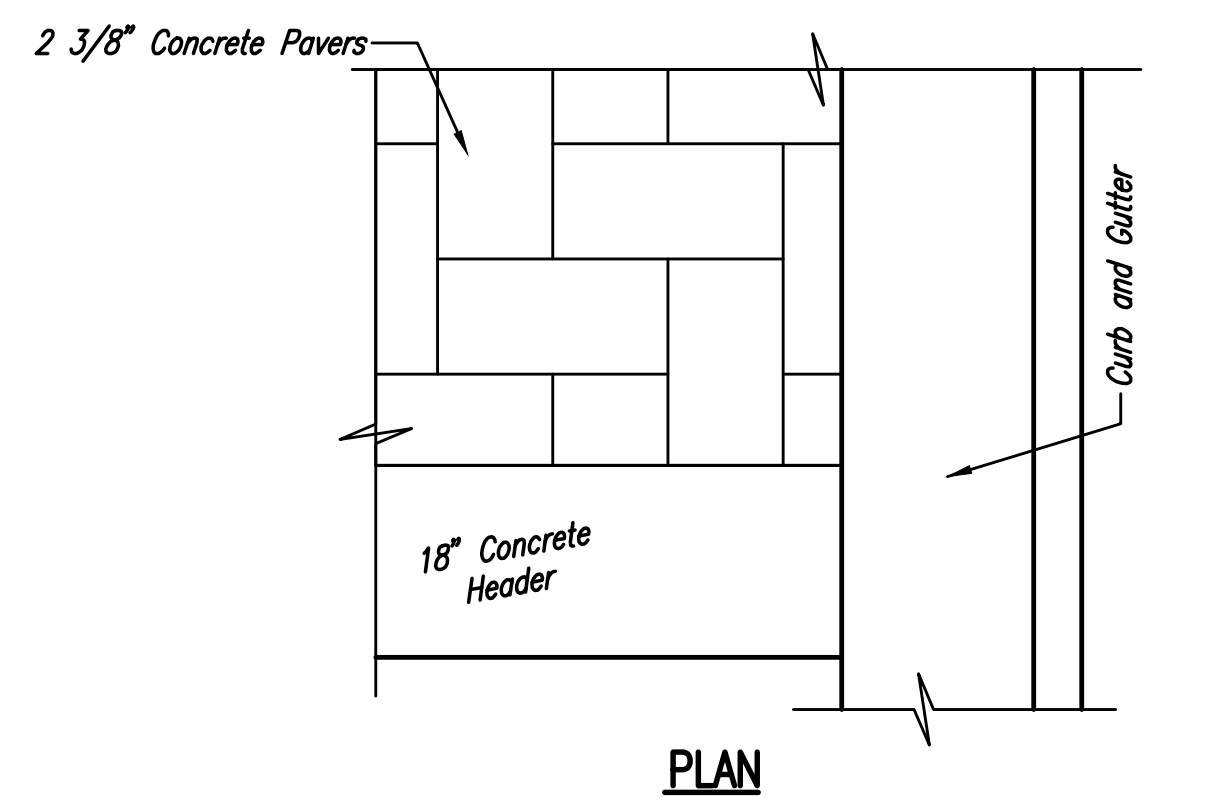
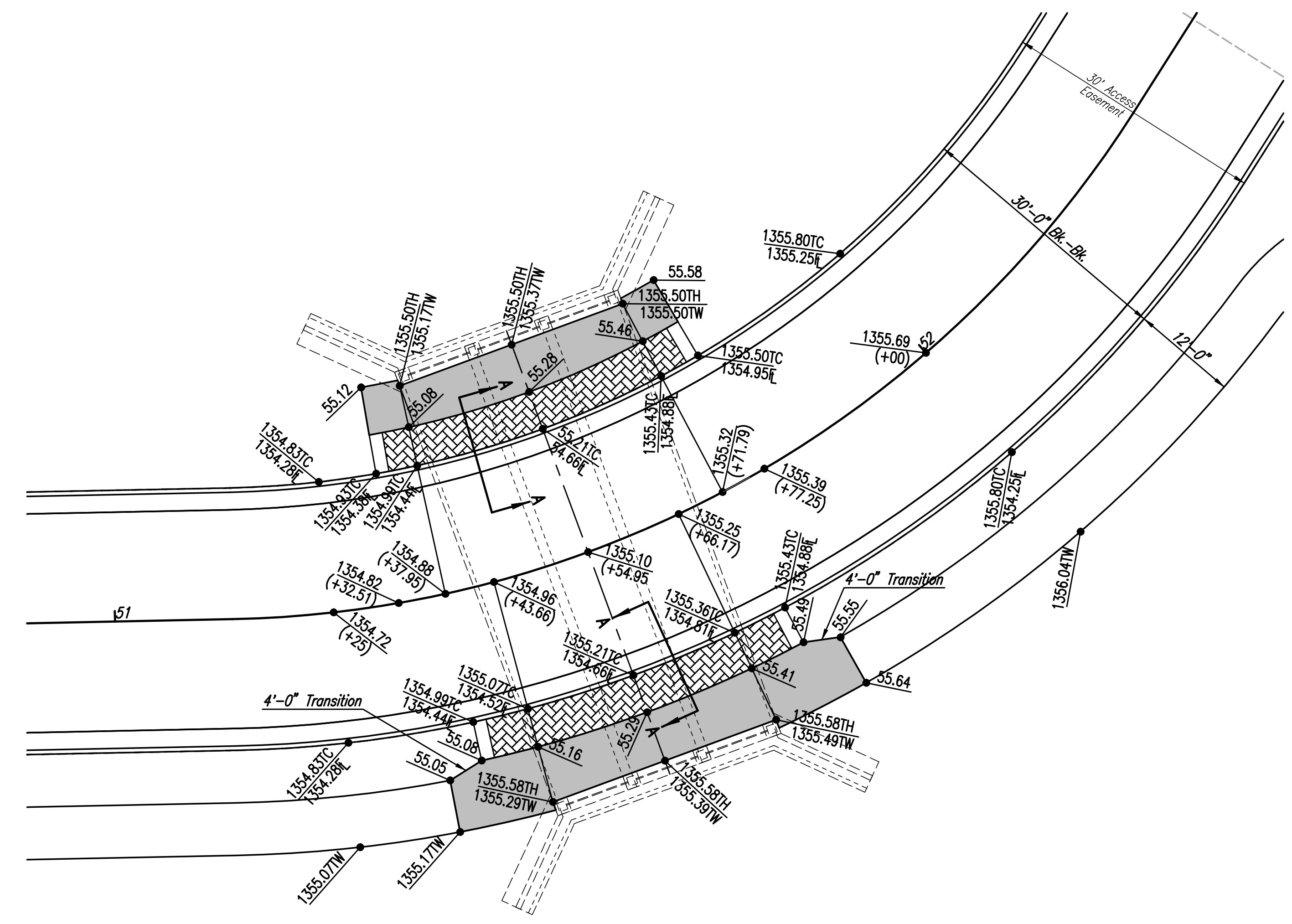


**LEGEND**

	6" CONCRETE SIDEWALK
	BRICK PAVERS
TC	TOP OF CURB
FL	FLOWLINE
TH	TOP OF HUBGUARD
TW	TOP OF SIDEWALK



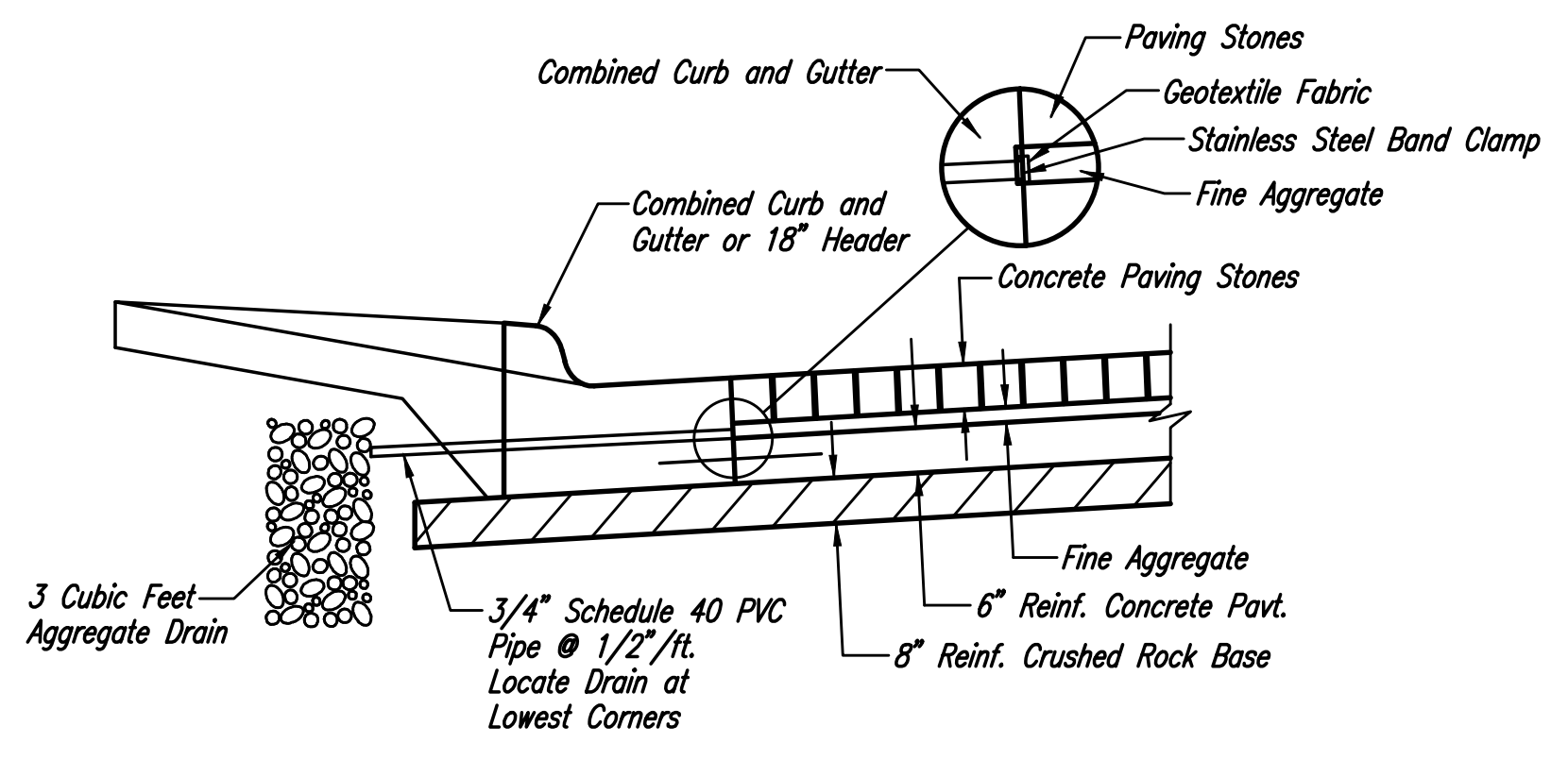
**SECTION A-A THRU BRICK PAVERS AT RCB**



**PLAN**

**GENERAL NOTES  
BRICK PAVEMENT**

1. CONCRETE PAVING BRICK SHALL BE 2 3/8" MIN. THICKNESS AND MEET OR EXCEED ASTM C-936-82. PAVING STONES TO BE "HOLLAND STONE" IN THE WINTER BLEND COLOR AS MANUFACTURED BY PAVESTONE CO., OR APPROVED EQUAL. STONES SHALL BE LAID IN A HERRINGBONE PATTERN.
2. SAND BEDDING SHALL MEET THE CITY'S REQUIREMENTS FOR FINE AGGREGATE. AN UNCOMPACTED SAND LAYING COURSE SHALL BE SPREAD EVENLY OVER THE AREA TO BE PAVED AND THEN SCREEDED TO A LEVEL OF APPROXIMATELY 1" THICKNESS. ONCE SCREEDED AND LEVELED TO THE DESIRED ELEVATION, THE SAND LAYING COURSE SHALL NOT BE DISTURBED IN ANY WAY.
3. THE PAVING BRICK SHALL BE INSTALLED PERPENDICULAR AND PARALLEL TO THE MAJOR AXIS OF THE CROSSWALK OR AREA BEING PAVED. STONES SHALL BE PLACED WITH THE CHAMFERED SIDE UP, AND JOINT SPACES KEPT UNIFORM APPROXIMATELY 1/8" THICK. THE GAPS AT THE EDGE OF THE PAVED SURFACE SHALL BE FILLED WITH STONES CUT TO FIT. CUTTING SHALL BE ACCOMPLISHED TO LEAVE A CLEAN EDGE TOWARD THE TRAFFIC SURFACE, USING A MASONRY SAW. WHENEVER POSSIBLE, NO CUTS SHOULD RESULT WITH A PAVER LESS THAN ONE-THIRD OF ITS ORIGINAL DIMENSION.
4. PAVING BRICK SHALL BE VIBRATED TO THEIR FINAL LEVEL IN THE SAND LAYING COURSE BY TWO OR THREE PASSES OF A VIBRATING COMPACTOR CAPABLE OF 3000 TO 5000 POUNDS COMPACTION FORCE WITH THE SURFACE CLEAN AND JOINTS OPEN.
5. AFTER VIBRATION, CLEAN CONCRETE SAND SHALL BE SPREAD OVER THE PAVING STONE SURFACE, ALLOWED TO DRY, AND VIBRATED INTO JOINTS WITH ADDITIONAL PASSES OF THE PLATE VIBRATOR SO AS TO COMPLETELY FILL THE JOINTS. A LIGHT COATING OF SAND SHALL BE SWEEPED OVER THE COMPLETED SURFACE AND LEFT TO WEATHER IN.
6. PLACEMENT AND COMPACTION OF SAND FOR INSTALLATION OF THE PAVING BRICK IS SUBSIDIARY TO THE PAVING BRICK ITEM. PLACEMENT OF THE 6" REINFORCED CONCRETE PAVEMENT UNDER ALL PAVING BRICK AREAS, INCLUDING THE 18" CONCRETE HEADER AT CROSS WALK SHALL BE INCLUDED IN THE UNIT PRICE BID PER SQUARE YARDS OF "BRICK PAVERS (CONCRETE)".



**BRICK PAVEMENT DRAIN DETAIL**  
(2 Required)

Scaled 10-05-2015 12:25:38 PM by BJS  
 Plot Scale 1:1 11-02-2015 9:38:47 AM by BJS  
 U:\Wichita-Civil\2015\15120\Drawings\15120-002-05C-SIDEWALK PLAN-ACCESS RD. RCB

	No.	Revision	By	Date	
	NEWMARKET OFFICE 2ND-ACCESS DRIVE PAVING AND INCIDENTAL DRAINAGE IMPROVEMENTS <b>SIDEWALK PLAN-ACCESS RD. RCB</b> GARY JANZEN, P.E. - CITY ENGINEER CITY OF WICHITA PROJECT NO. 472-85225				
	PROFESSIONAL ENGINEERING CONSULTANTS, P.A. 303 SOUTH TOPEKA WICHITA, KS 67202 316-262-2691 www.pec1.com				
	Designed by	BMM, TBK	Job No.	35-15120-002	Sht.
Drawn by	BJS	Date	November 2015		