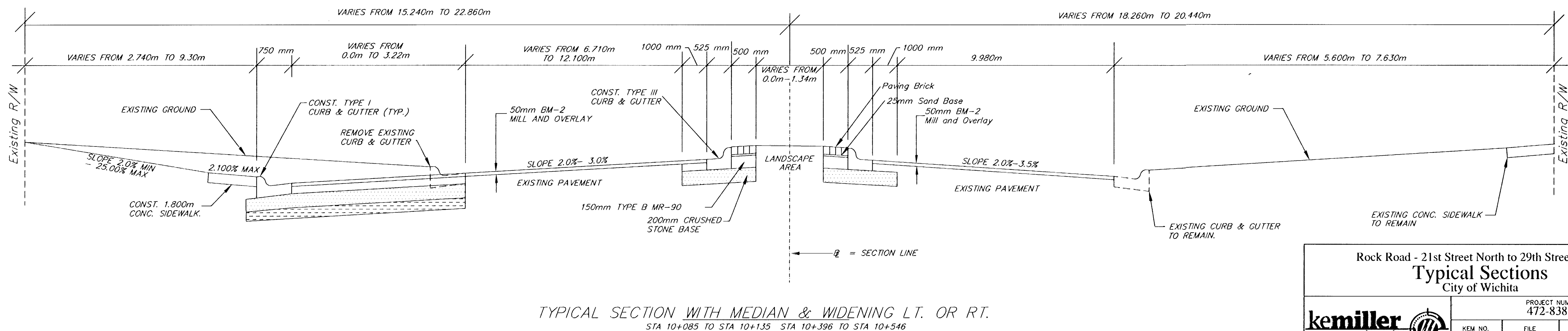
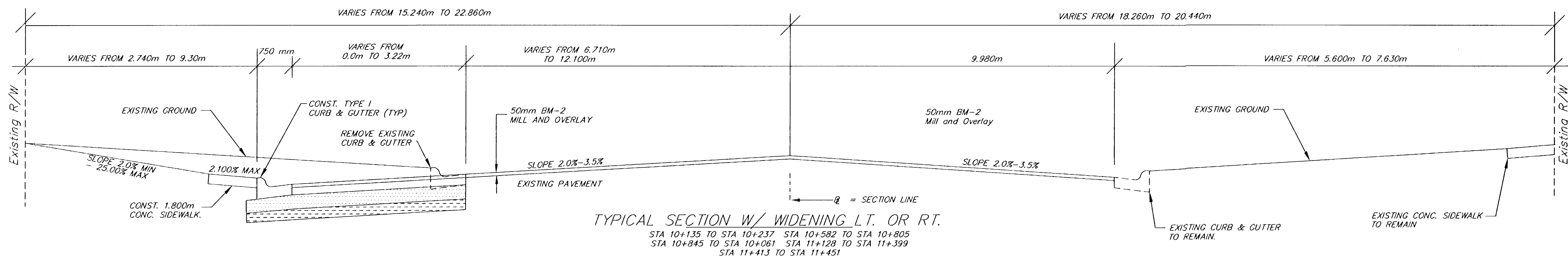
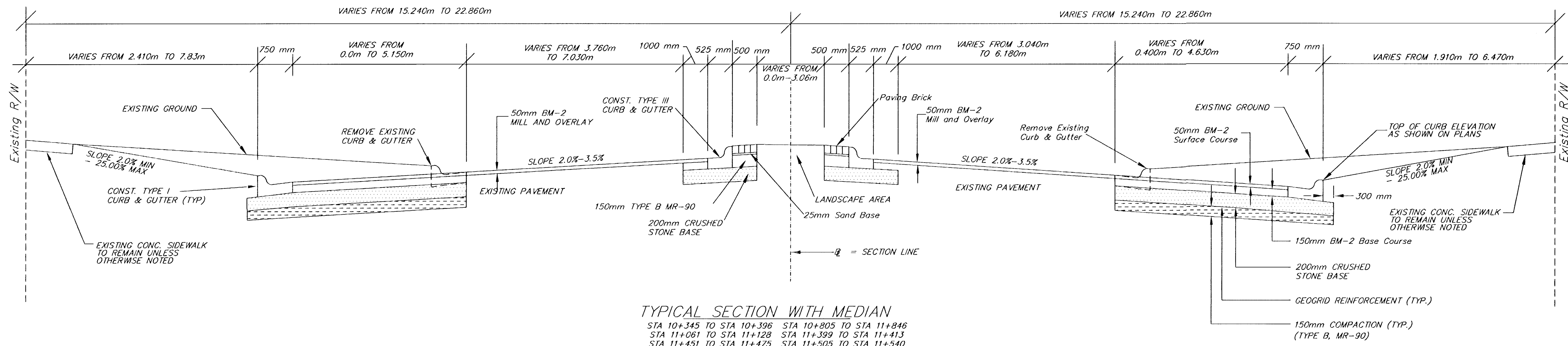


FHWA REG. NO.	STATE	PROJECT NO.	YEAR	SHEET NUMBER	TOTAL SHEETS
7	KANSAS	87N-0197-01	2004	3	51

FED. AID NO. CMA-N019 (701)



Rock Road - 21st Street North to 29th Street North
Typical Sections
 City of Wichita

PROJECT NUMBER 472-83889		FILE typ.section 2	DATE 8/2002	SHEET 3
KEM NO. 02042	DESIGN psb	DRAWN psb	REVISED 3/2004	OF 51

kemiller engineering

516 S. Market, Wichita, KS 67202 316/264-0242