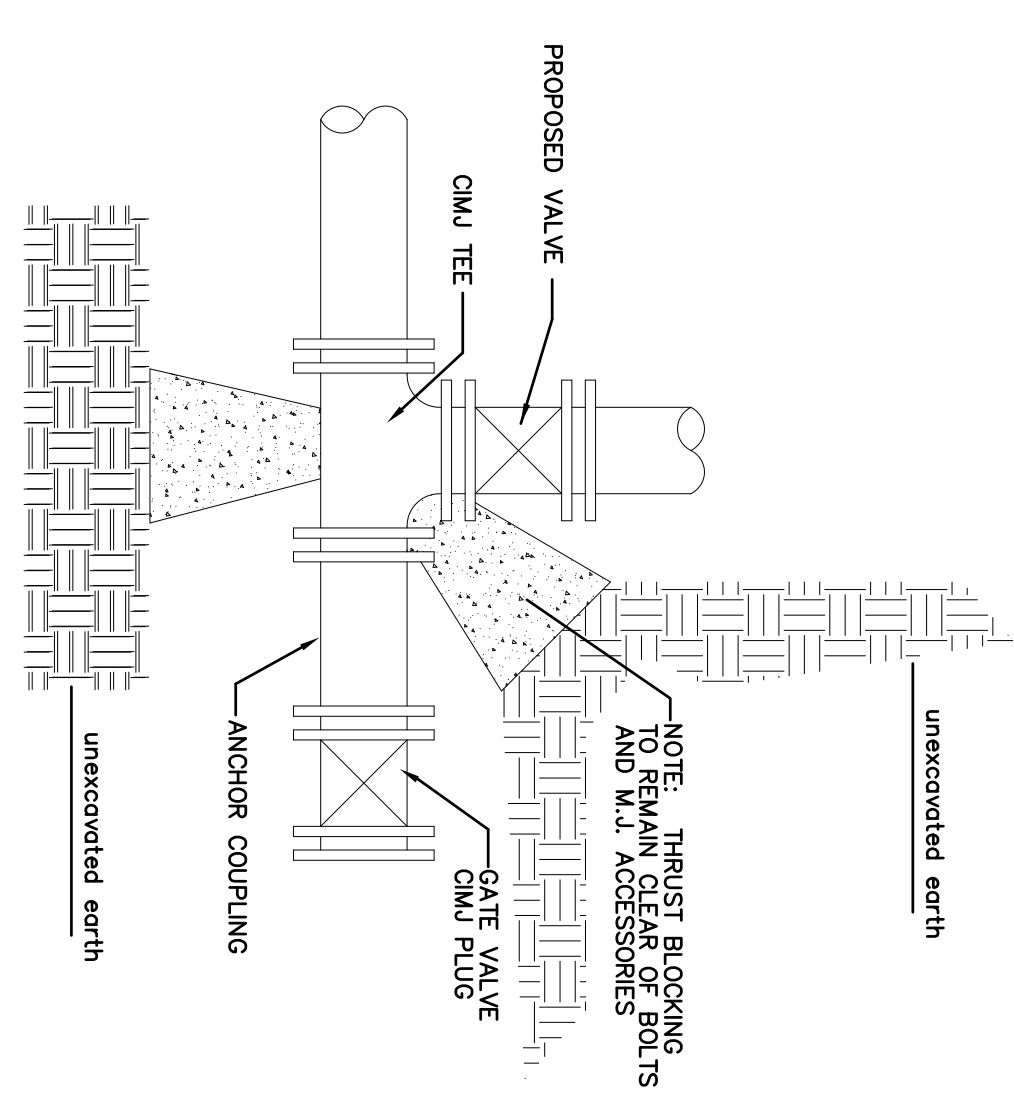
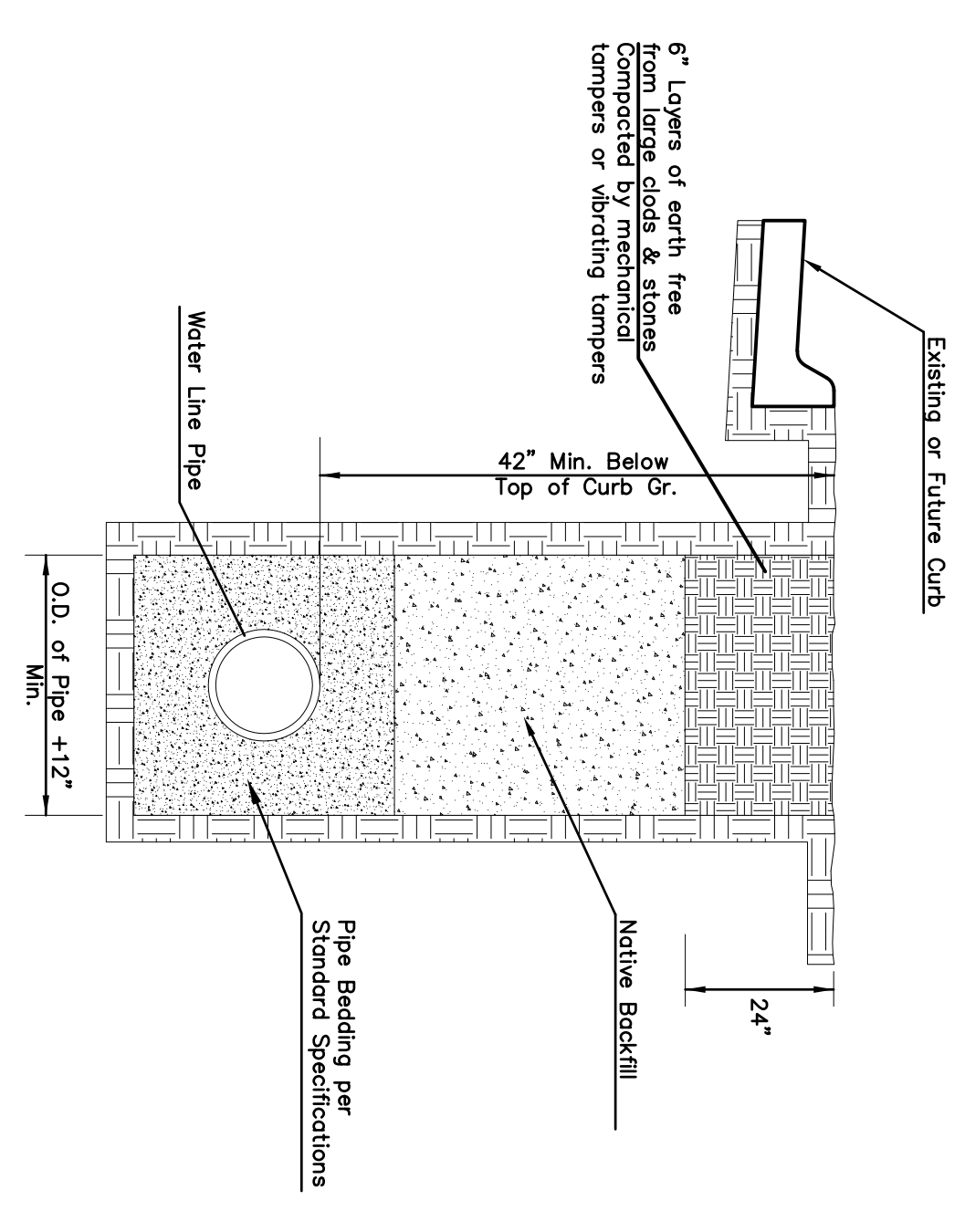


PIPE SIZE	THRUST AT FITTINGS IN TONS - AT 150#/IN ² -P	TEE
6"	2.8	2.15
8"	4.9	3.75
12"	11.4	8.75
16"	20.15	15.4
20"	31.15	23.85
24"	44.55	34.1

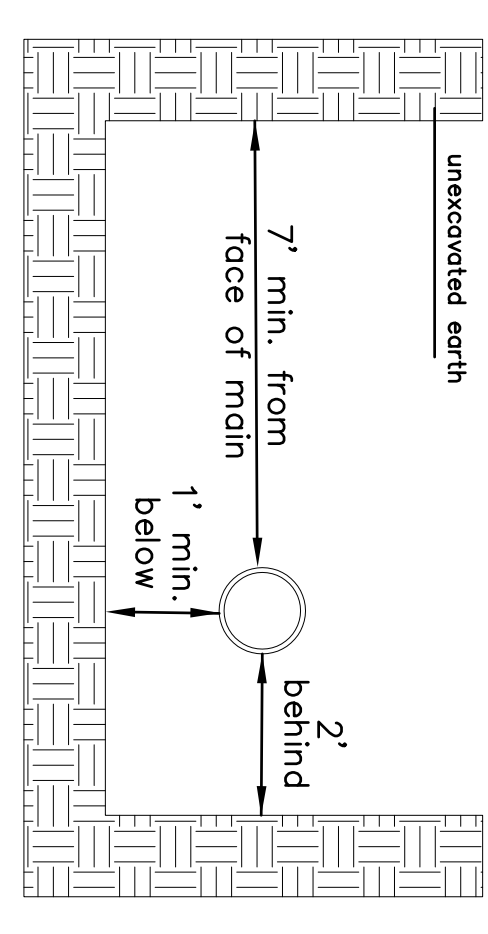
TYPICAL THRUST BLOCKS



KEY BLOCK DETAIL

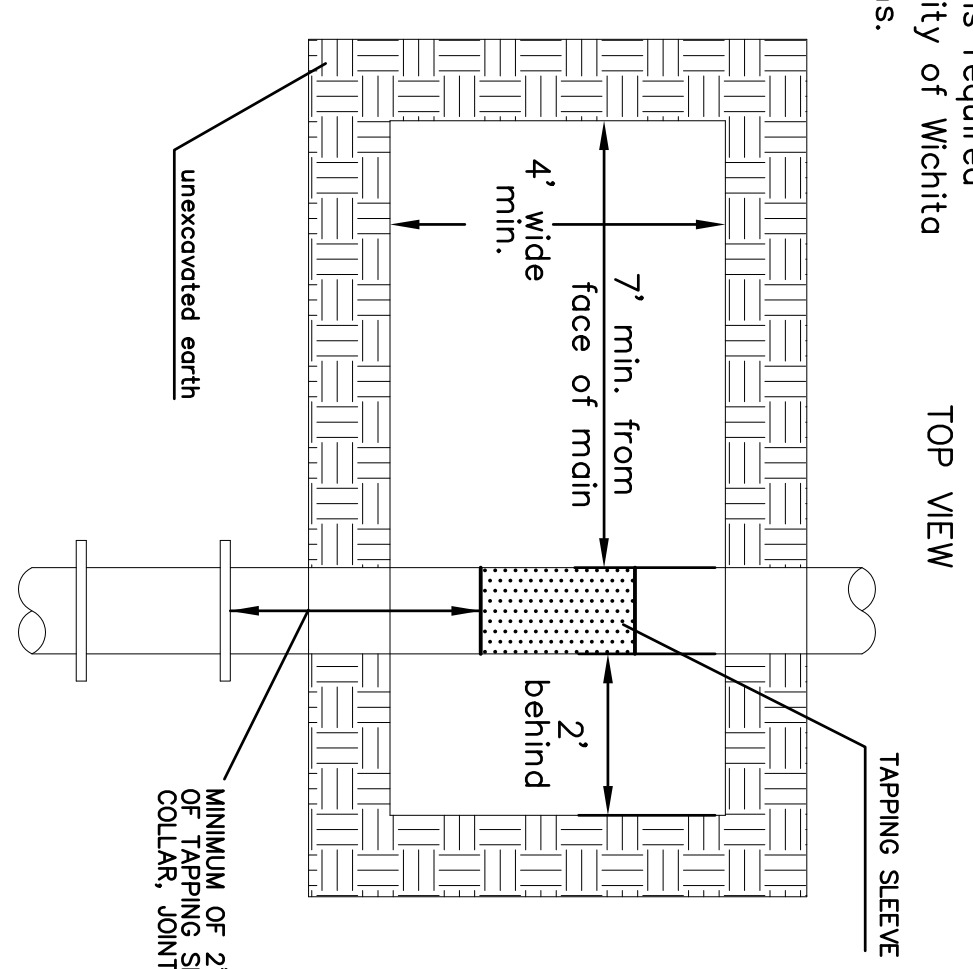


TRENCH COMPACTION IN ROAD RIGHT-OF-WAY



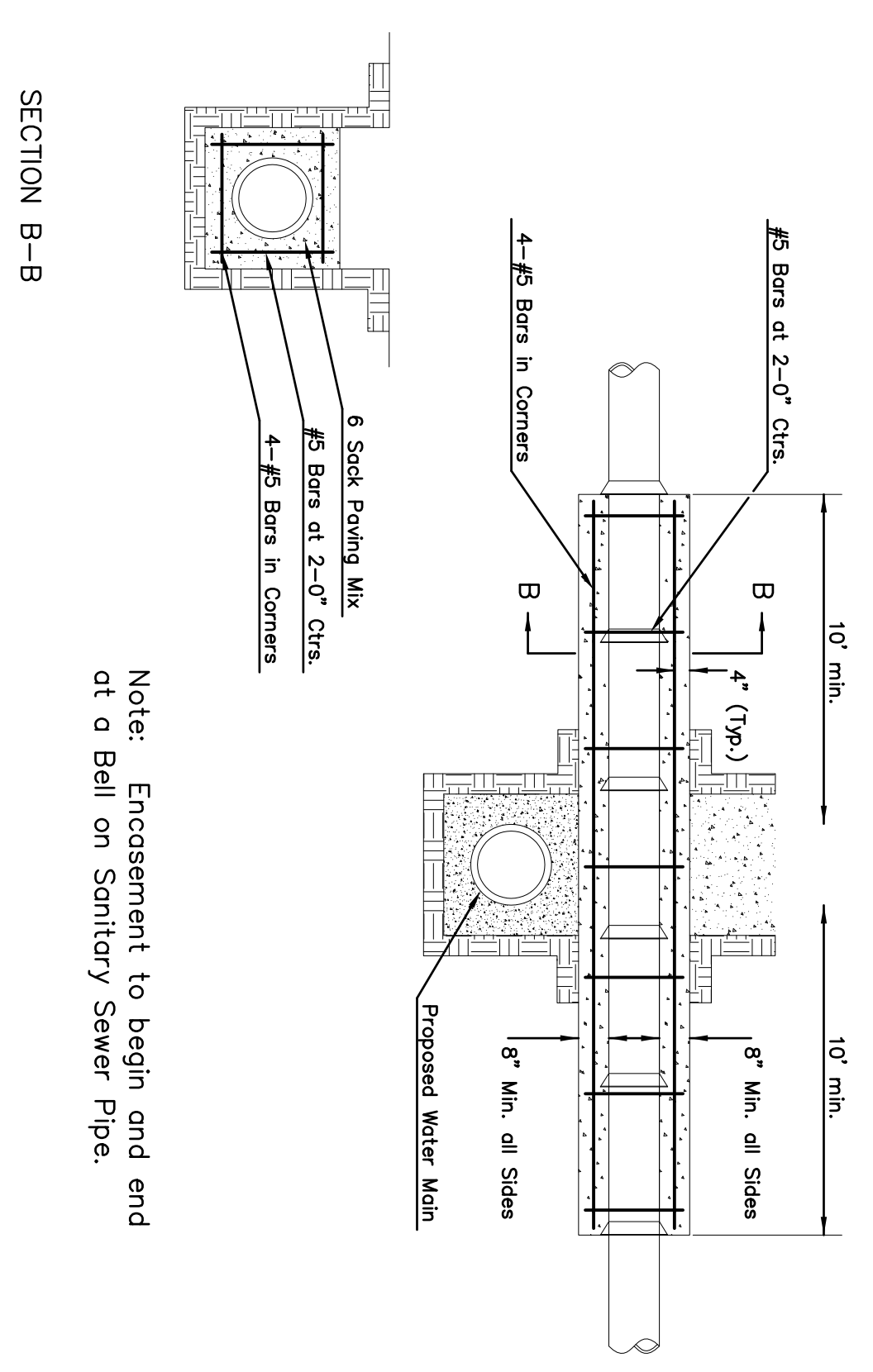
SIDE VIEW

Note: When shoring is required it is to be per the City of Wichita Standard Specifications.



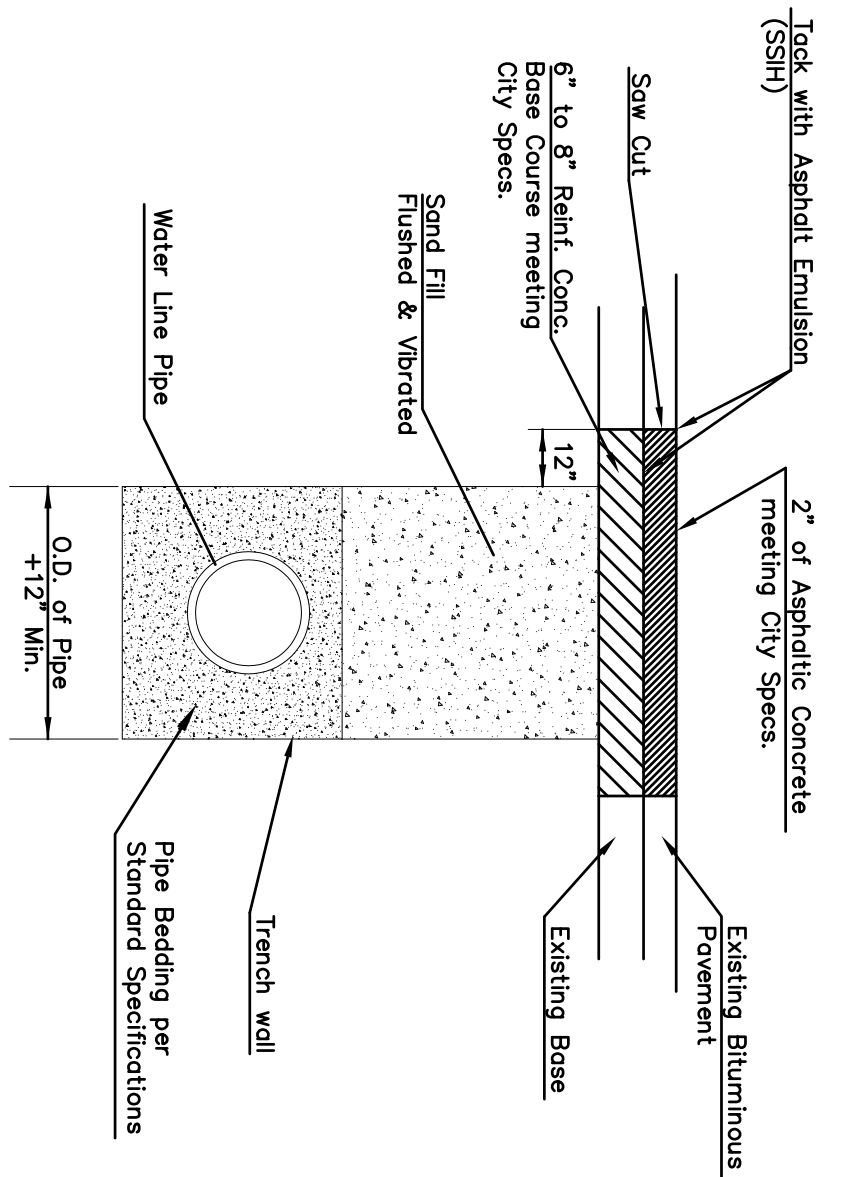
TOP VIEW

EXCAVATION FOR WET TAP



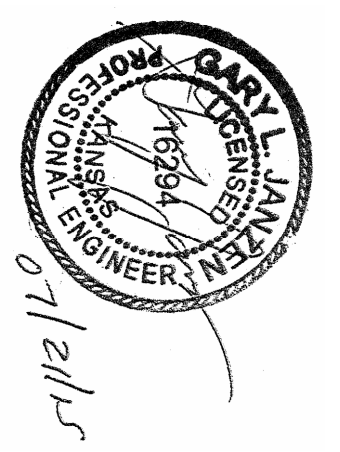
REINFORCED CONCRETE ENCASEMENT OF SANITARY SEWER

Note: Encasement to begin and end at a Bell on Sanitary Sewer Pipe.



PAVEMENT REPLACEMENT & TRENCH COMPACTION UNDER EXISTING AND PROPOSED CITY ROADS

* PLANS GOVERN UNLESS OTHERWISE NOTED ON PLANS



CITY OF WICHITA
PUBLIC WORKS & UTILITIES
ENGINEERING DIVISION

MISCELLANEOUS
WATER
DETAILS

GARY JANZEN, P.E.
CITY ENGINEER

PROJECT NUMBER	102106
DATE	
CITY ENGINEER'S OFFICE	CITY HALL - SEVENTH FLOOR 455 NORTH MAIN STREET WICHITA, KANSAS 67202-1620 (316) 268-4501

FINAL

Engineer: J. DICKMAN
Designer: J. UNRUH
Dwg: P:\102106\102106-BASE
Job No: 102106
Date: 11/3/2015

POE & ASSOCIATES, INC.
CONSULTING ENGINEERS

544 West Douglas Avenue | Wichita, KS 67203
Phone 316/685-4114 | FAX 316/685-4444

SOUTH BARTLOW AVENUE
SANITARY SEWER EXTENSION
WATERLINE MISCELLANEOUS DETAILS

CITY OF WICHITA, KANSAS
GARY JANZEN, P.E. - CITY ENGINEER
C.O.W. Project #468-85032; OCA #744397

No.	Date	By	Approved	Revision