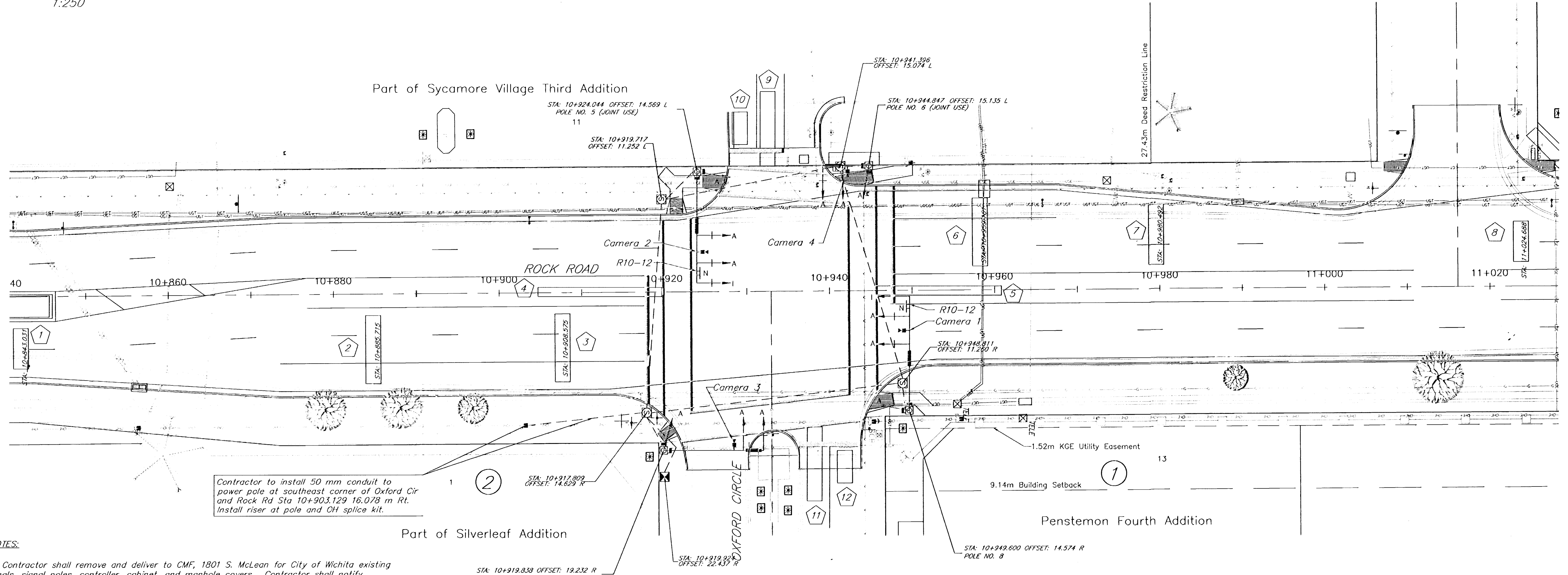


1:250

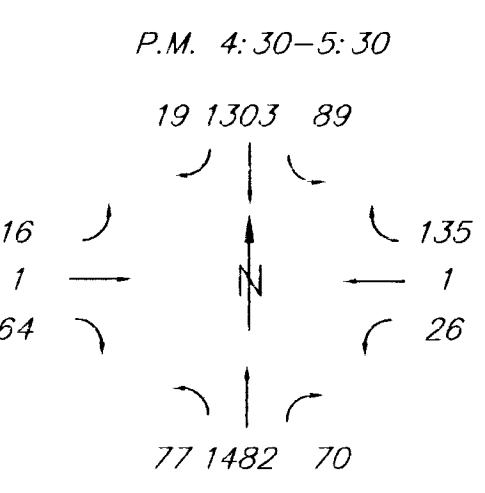


Contractor to install 50 mm conduit to power pole at southeast corner of Oxford Cir and Rock Rd Sta 10+903.129 16.078 m RL. Install riser at pole and OH splice kit.

NOTES:

- Contractor shall remove and deliver to CMF, 1801 S. McLean for City of Wichita existing signals, signal poles, controller, cabinet, and manhole covers. Contractor shall notify Traffic Engineering Department two weeks prior to start of construction. Delivery of salvageable items is non-participating.
- Traffic to be carried through construction. See Construction Traffic Control Plan.
- Contractor shall contact all utility companies which may be affected by this construction prior to beginning of construction.
- Service Box, Junction Box and conduit runs are typical only and should be adjusted during installation to clear obstructions and facilitate wiring.
- The traffic signal system shall be complete and the Contractor shall furnish and install all equipment necessary for the satisfactory operation of electrical apparatus and for the complete operation of traffic signal system whether specifically mentioned or not.

STA: 10+919.838 OFFSET: 19.232 R
POLE NO. 7 (JOINT USE)



DETECTORS/ZONES

ZONE	SIZE	CAMERA	MOVEMENT CALLED
1		1	4
2	1.8 m x 8.2 m	1	4
3	1.8 m x 8.2 m	1	4
4	1.8 m x 15 m	1	7
5	1.8 m x 15 m	2	3
6	1.8 m x 8.2 m	2	8
7	1.8 m x 8.2 m	2	8
8	1.8 m x 5 m	2	8
9	1.8 m x 9 m	3	2
10	1.8 m x 4 m	3	2
11	1.8 m x 9 m	4	6
12	1.8 m x 4 m	4	6

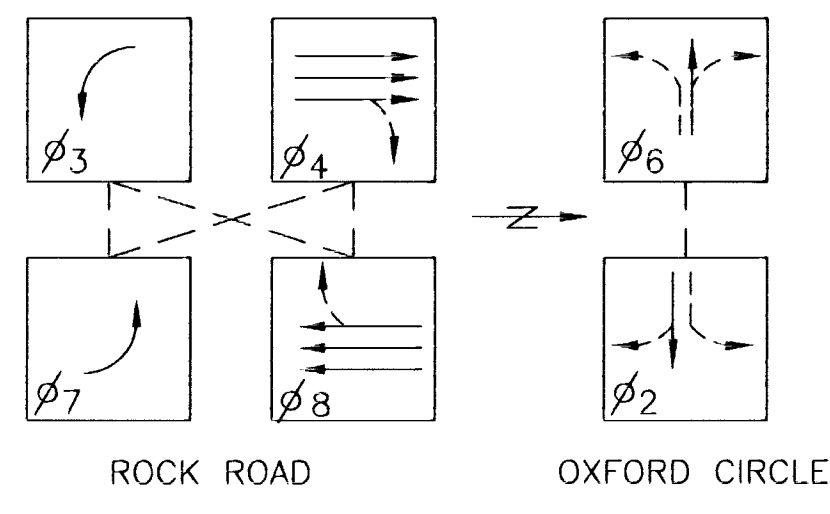
INTERVAL	PHASE								TIME CLOCK		FEATURES									
	1	2	3	4	5	6	7	8	C		F		1	2	3	4	5	6	7	8
MAX	0		30	30	80		30	30	80	0	YEAR	VEH. RECALL								
MAX. 2	1		30	30	80		30	30	80	1	MONTH	FED. RECALL								
WALK	2		5	5	5		5	5	5	2	DAY / MONTH	RED LOCK								
FL. DR.	3		15	20	15		15	20	15	3	DAY / WEEK	YELLOW LOCK								
MAX. INTL.	4		6	6	10		6	6	10	4	HOUR	Ø PERMIT								
MIN. GREEN	5		5	5	8		5	5	8	5	MINUTE	FED. PHASES								
TER	6		1	1	15		1	1	15	6	SECOND	LEAD PHASES								
TTR	7		1	1	25		1	1	25	7		DGL. ENTRY								
	8									8		SEQUENTIAL								
PASSAGE	9		1	1	2.0		1	1	2.0	9		STARTUP								
MIN. GAP	A		1	1	2.0		1	1	2.0	A		OVERLAP A								
ADD ACT	B		1	1	2.0		1	1	2.0	B		OVERLAP B								
YELLOW	C		3	3	4.0		3	3	4.0	C		OVERLAP C								
RED CLR.	D		1	1	1.5		1	1	1.5	D		OVERLAP D								
RED REV.	E									E		EXCLUSIVE								
WALK II	F									F		SIM GAP								

*10 SECOND DELAY ON RIGHT TURN LOOPS

INTERSECTION ID #

LEGEND:

- VEHICLE DETECTOR ZONE
- SERVICE BOX
- METAL TRAFFIC SIGNAL POLE
- TRAFFIC SIGNAL INDICATOR (WITH BACK PLATE)
- LOOP NO.
- STREET NAME SIGN
- LEFT TURN SIGN
- TRAFFIC SIGNAL INDICATOR
- MAST ARM SUSPENDED TRAFFIC SIGNAL (LENGTH OF MAST ARM)
- PEDESTRIAN SIGNAL INDICATOR AND PUSHBUTTONS
- CAMERA
- PAD MOUNTED CONTROLLER AND CABINET



SIGNAL PHASING

**Rock Road-21st Street North to 29th Street North
Rock Road & Oxford Circle Signal Plan
City of Wichita**

kemiller engineering	PROJECT NUMBER 472-83889		
	FILE signal2	DATE 08/2002	SHEET 28
DESIGN	DRAWN	REVISED 12/2003	OF 51

516 S. Market, Wichita, KS 67202 316/264-0242