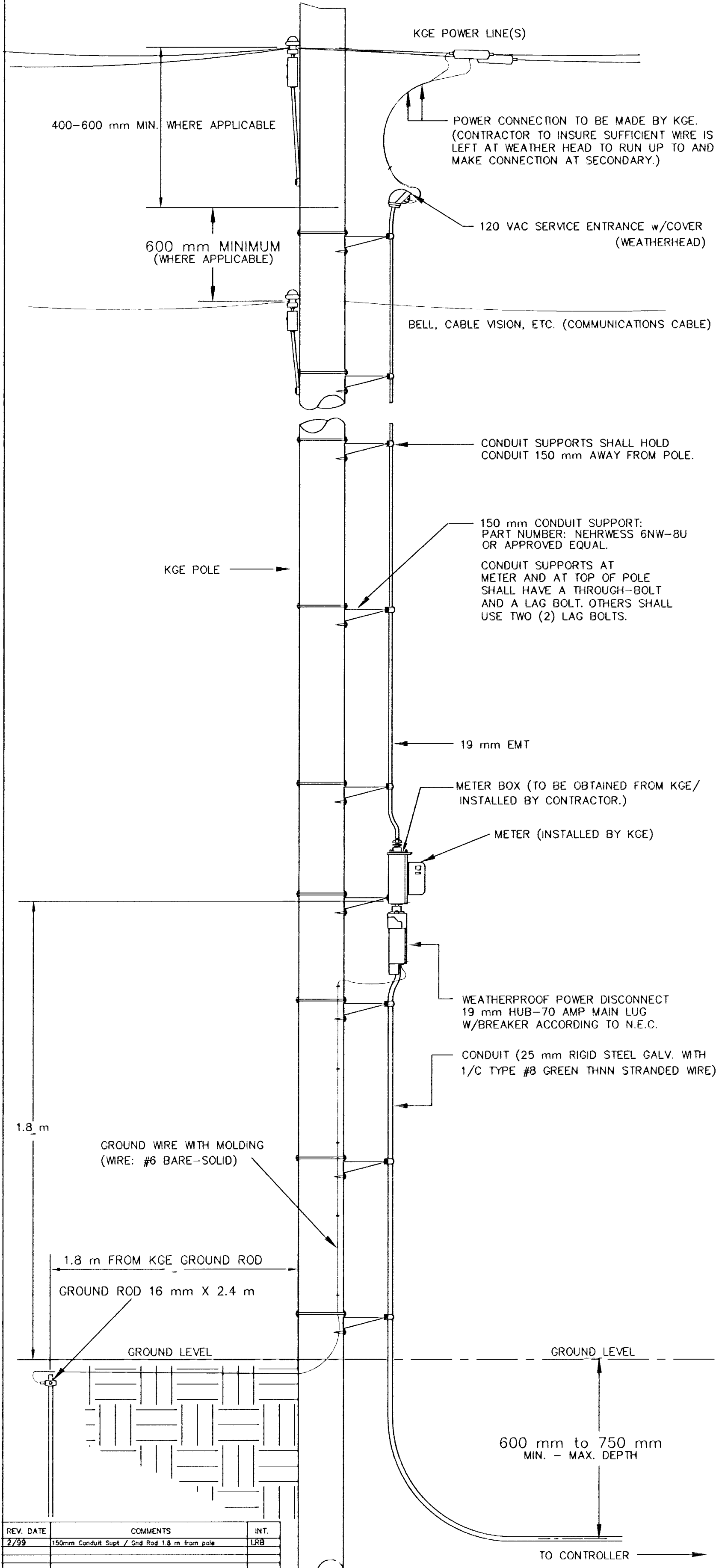


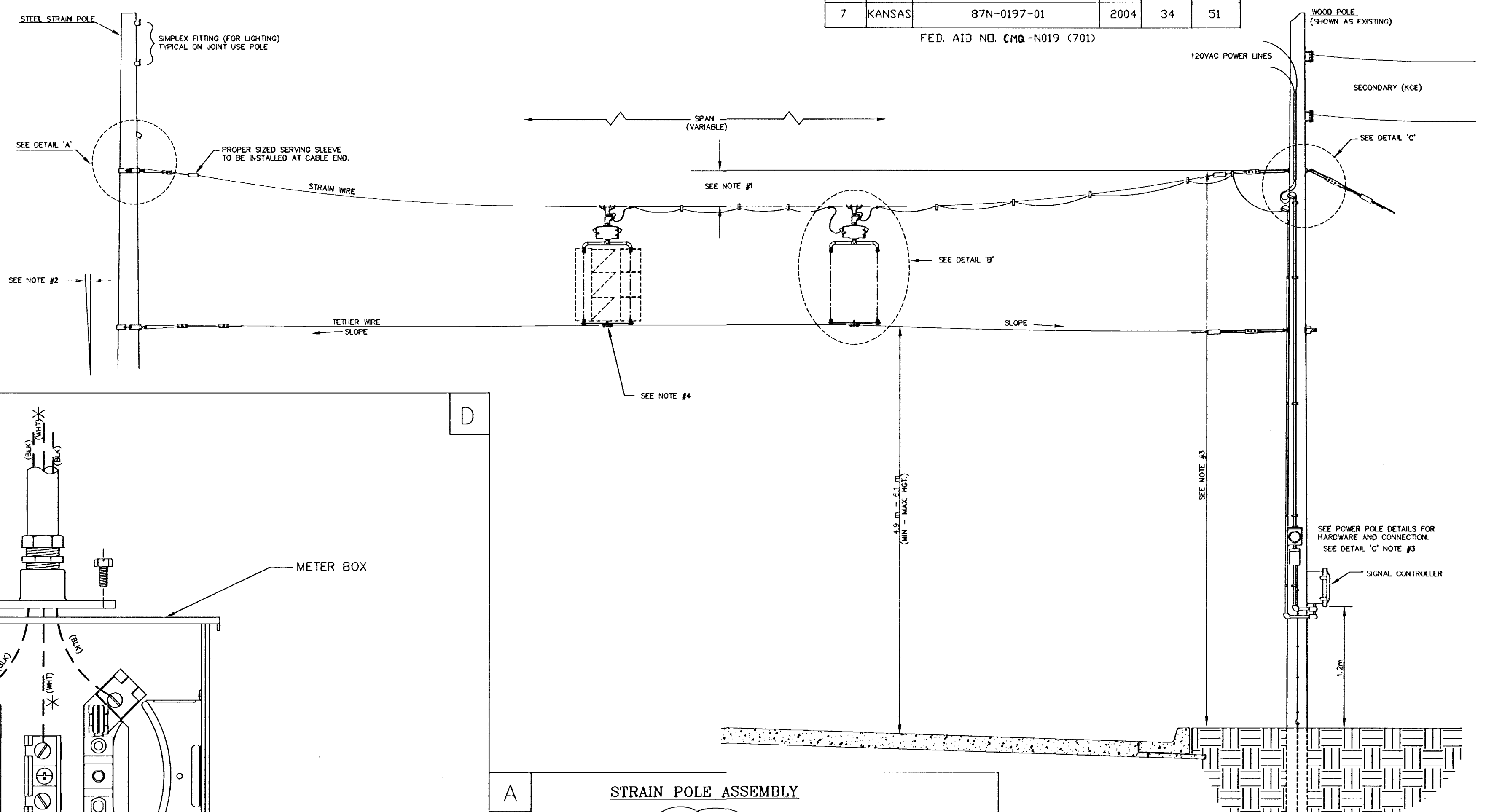
**POWER POLE DETAILS**



REV.	DATE	COMMENTS	INT.
2/79		150mm Conduit Supp. / Soil Rod 1.8 m from pole	LAB

**SPANWIRE ASSEMBLY DETAILS**

1. MAX. SAG = 5% OF SPAN.
2. STANDARD BACKRAKE = 1.5'
3. HEIGHT OF STRAIN WIRE HOOK-UP TO BE DETERMINED BY FIELD ENGINEER. TRAFFIC SIGNAL CABLE TO BE SECURED TO STRAIN (SPAN) WIRE WEATHERABLE NYLON CABLE HANGERS (300 mm CTR.) DETAIL 'B'
4. TETHER CLAMP TO BE DESIGNED TO RELEASE UNDER 'HIGH WIND LOAD' TO PERMIT SIGNAL 'FREE SWING'.

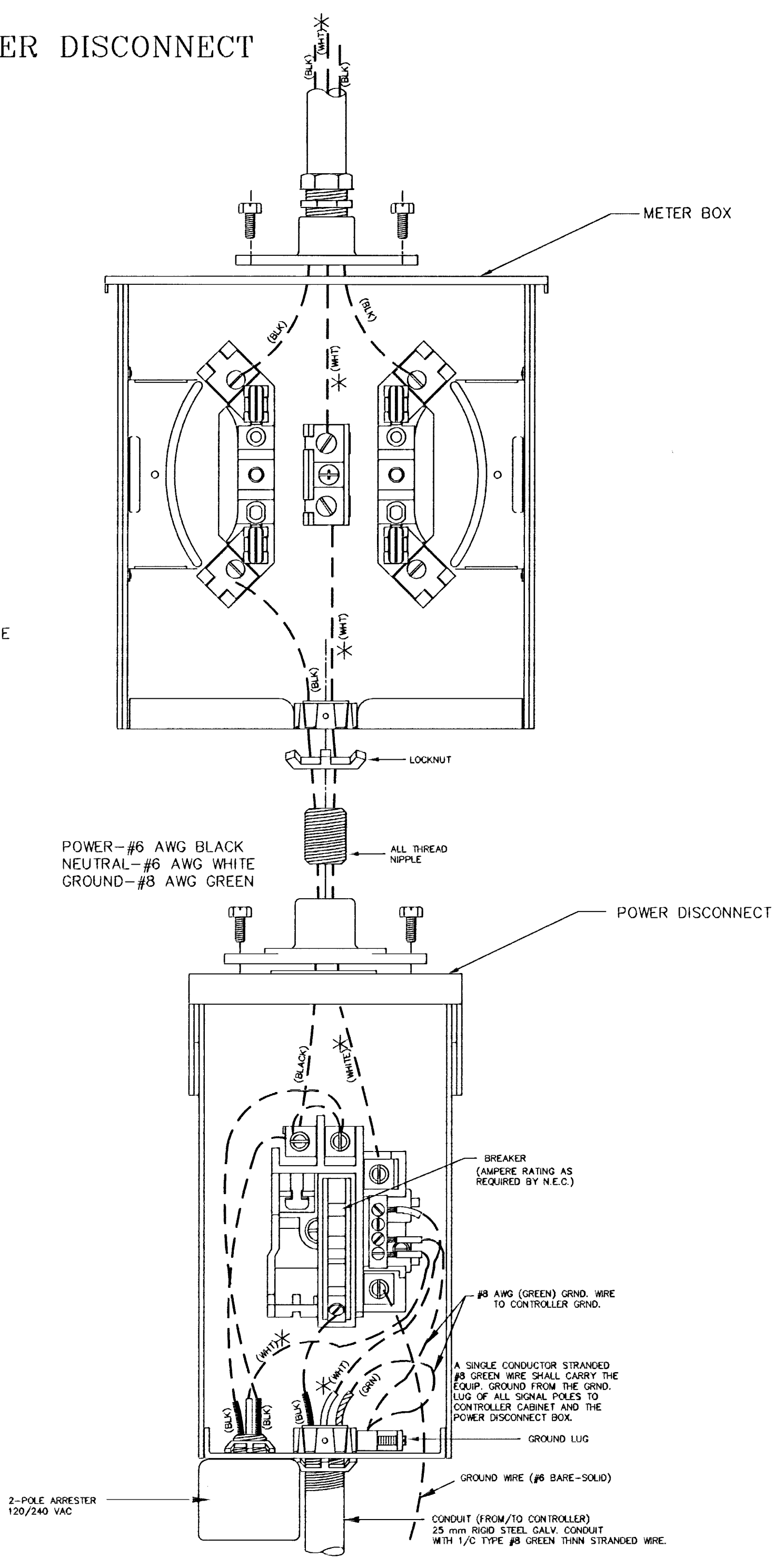


FHWA REG. NO.	STATE	PROJECT NO.	YEAR	SHEET NUMBER	TOTAL SHEETS
7	KANSAS	87N-0197-01	2004	34	51

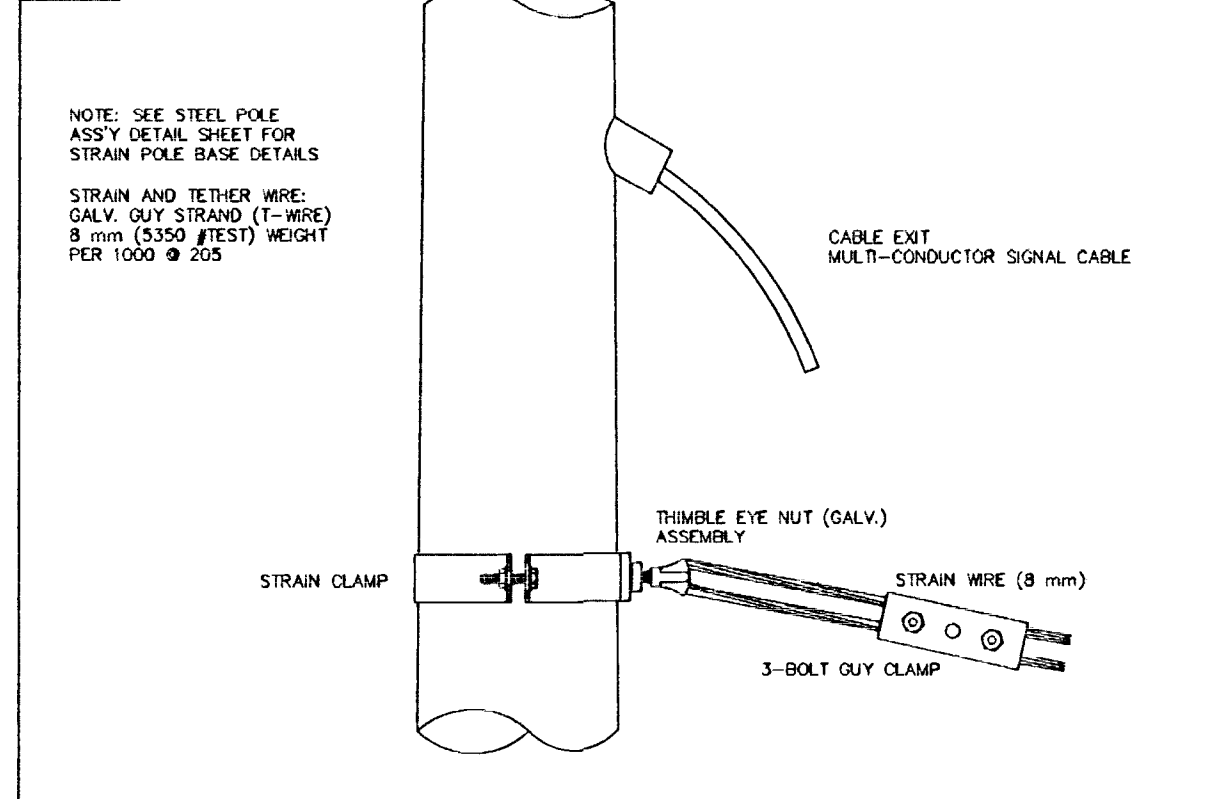
FED. AID NO. CMO-N019 (701)

**METER BOX & POWER DISCONNECT DETAILS**

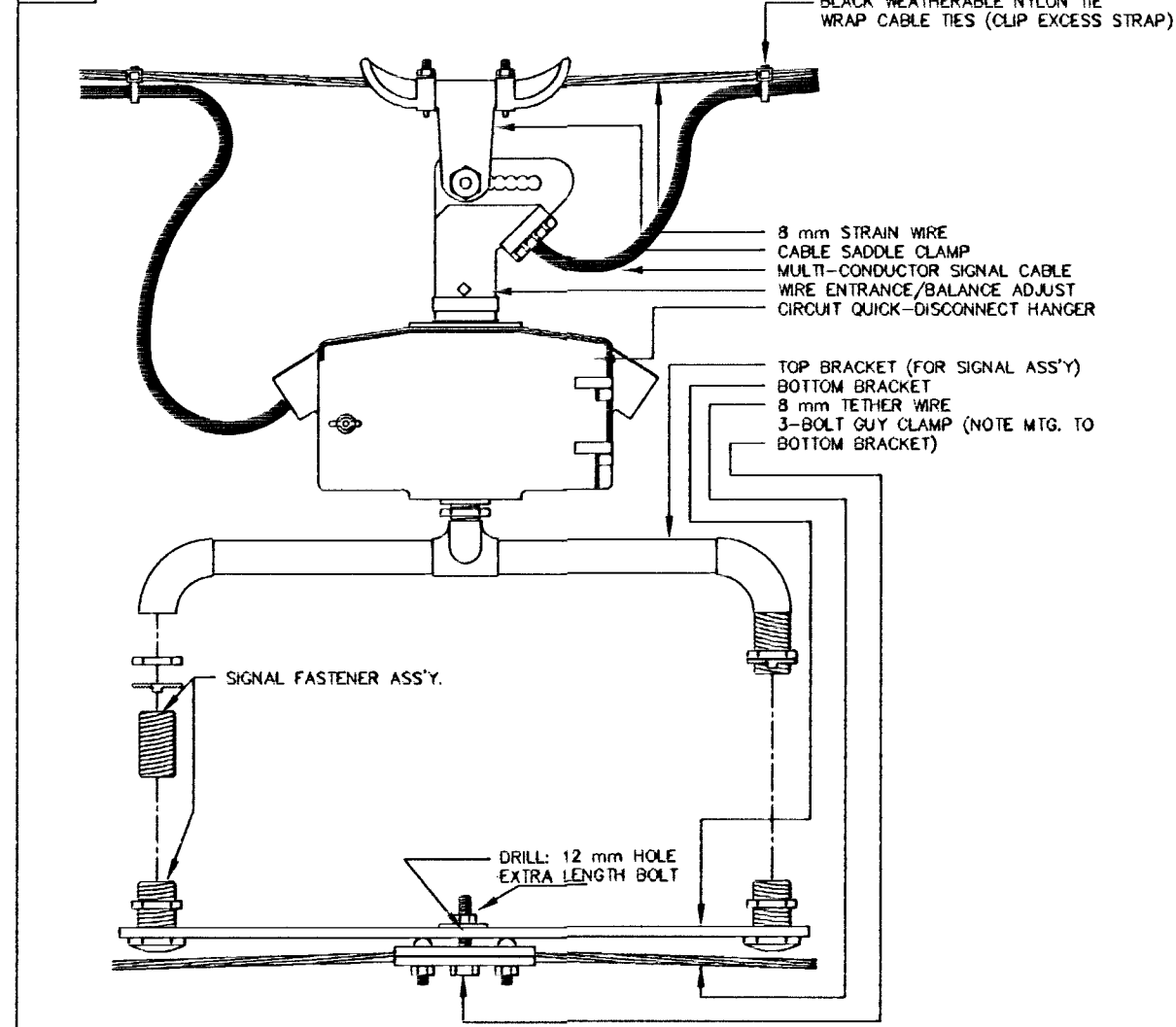
\* TO BE MARKED WITH WHITE TAPE



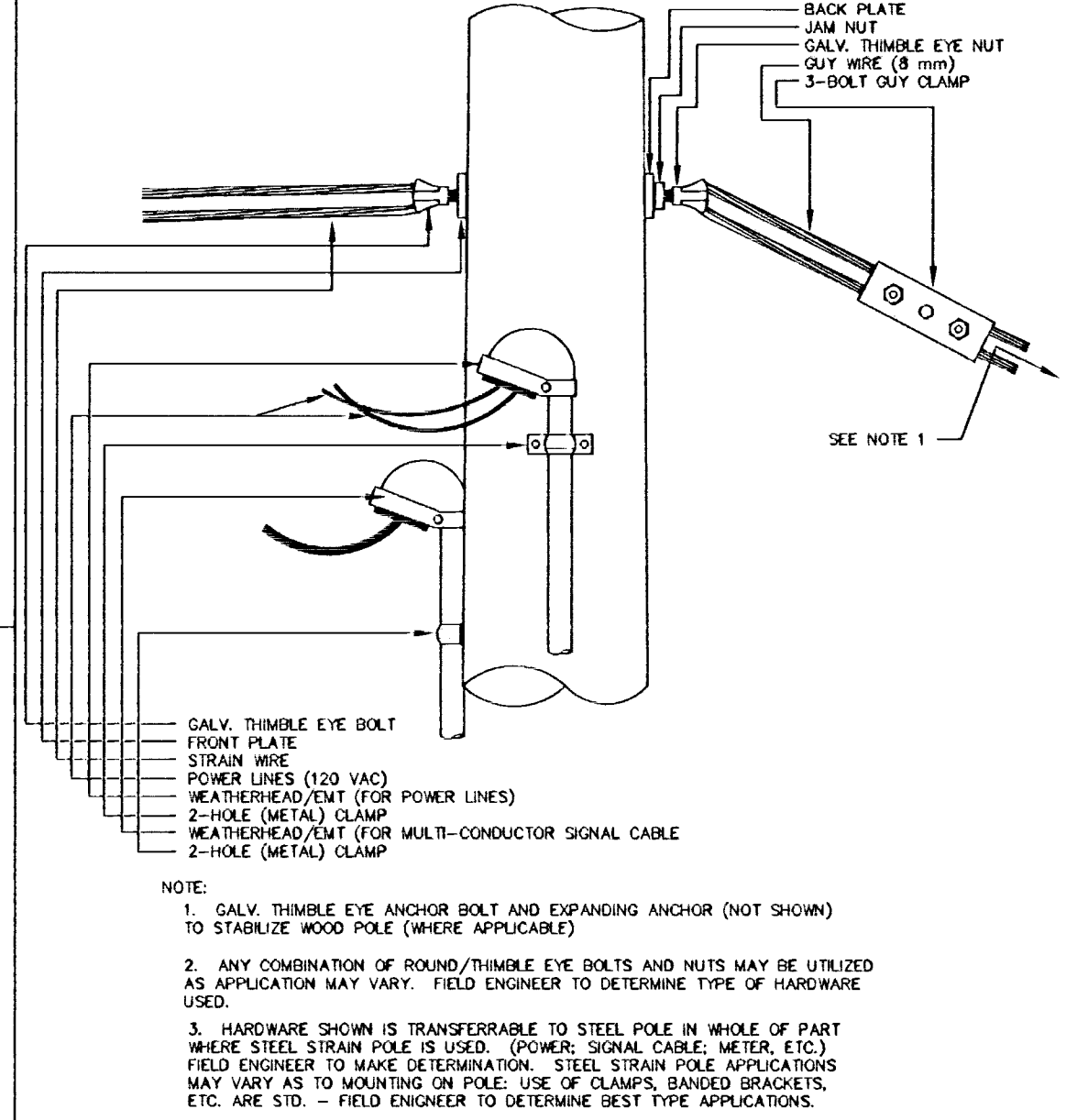
**A STRAIN POLE ASSEMBLY**



**B SIGNAL BRACKET ASSEMBLY DETAILS**



**C WOOD POLE ASSEMBLY DETAILS KGE POLE EXCLUDED**



PROJECT DESCRIPTION			
<b>POWER POLE AND SPAN POLE ASSEMBLY DETAILS</b>			
STANDARD APPLICATIONS :			
PROJECT NUMBER <b>XXX-XXXX</b>			
DRAWN BY: TM	APPROVED BY:	REVISED: LRB	
DATE: Feb. 96		DATE: 2/26/99	
CITY OF WICHITA DEPARTMENT OF PUBLIC WORKS			
ENGINEERING DIVISION	SCOTT LOGAN, TRAFFIC ENGINEER	SCALE	NO SCALE