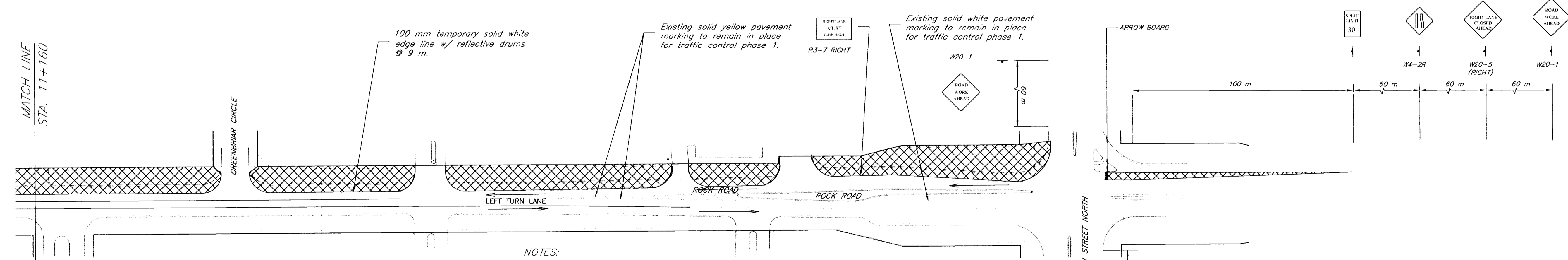
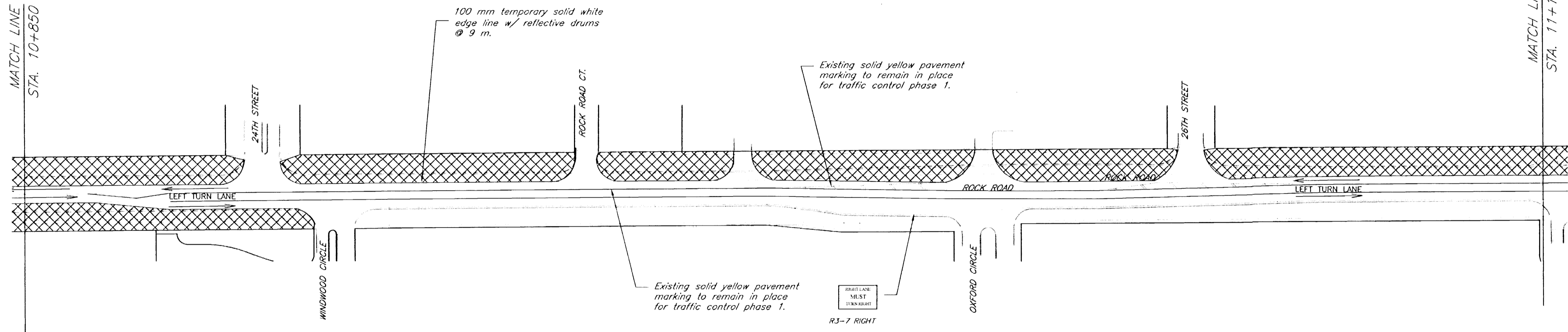
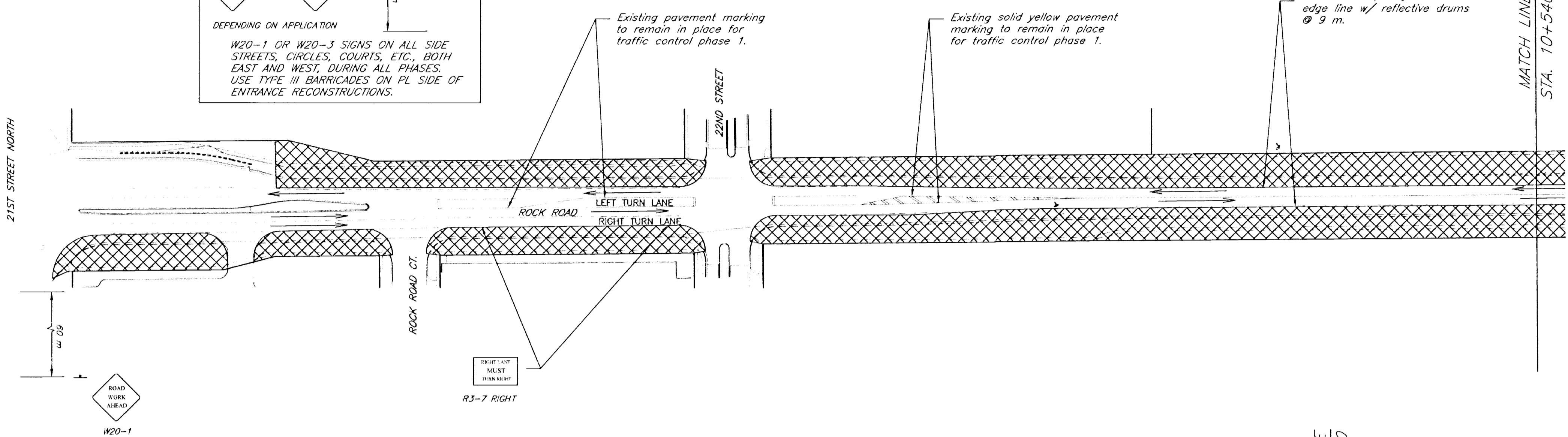
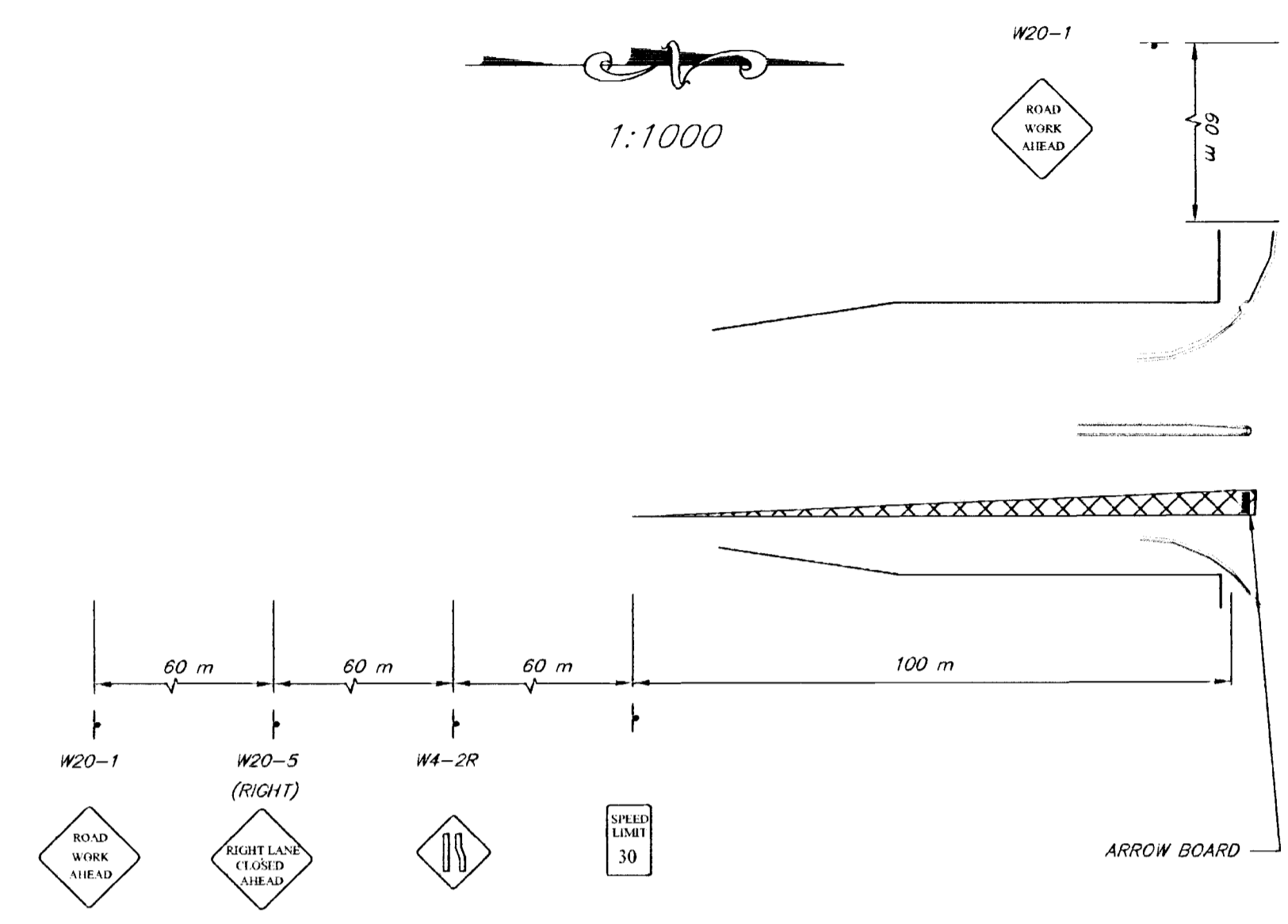
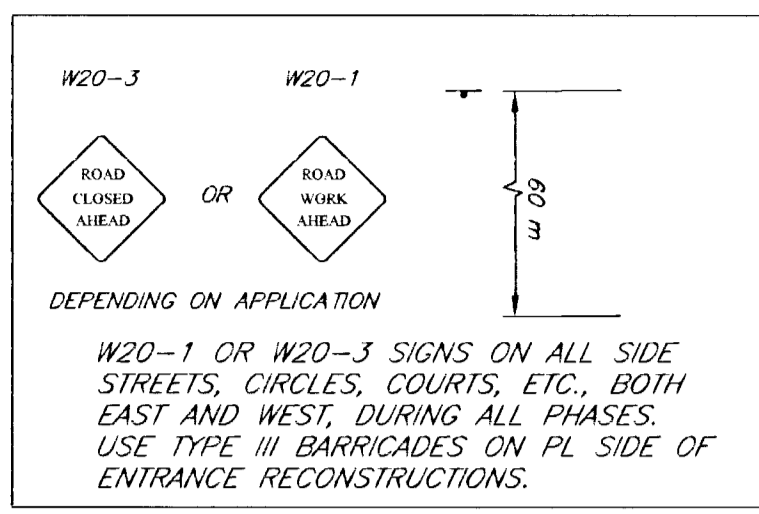
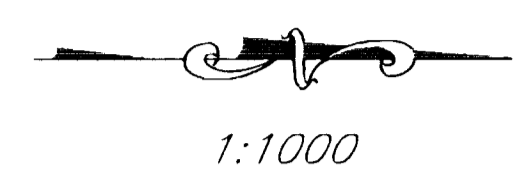


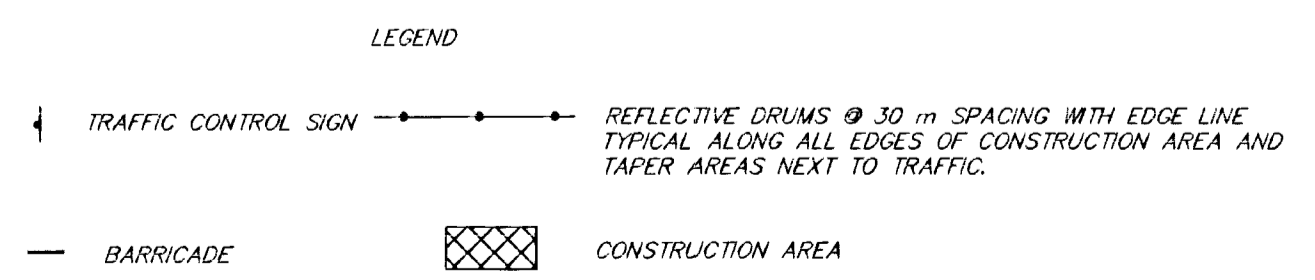
FHWA REG. NO.	STATE	PROJECT NO.	YEAR	SHEET NUMBER	TOTAL SHEETS
7	KANSAS	87N-0197-01	2004	40	51

FED. AID NO. CMQ-N019 (701)
 100 mm temporary solid white edge line w/ reflective drums @ 9 m.



NOTES:

1. TRAFFIC CONTROL TO BE IN PHASES AS SHOWN
2. ARTERIAL ACCESS TO BUSINESSES TO BE MAINTAINED AT ALL TIMES.
3. SPEED LIMIT SIGNS SHALL BE PLACED THROUGHOUT PROJECT AT 400 m INTERVALS, ALL PHASES.
4. TYPE III BARRICADES SHALL BE PLACED ON THE PROPERTY LINE SIDE OF ALL SIDE ENTRANCES THAT ARE CLOSED FOR CONSTRUCTION.



FOR A TEXT DESCRIPTION OF TRAFFIC CONTROL AND CONSTRUCTION ACTIVITIES, SEE SHEET 39.

**Rock Road-21st Street North to 29th Street North
 Traffic Control Phase 1
 City of Wichita**

		PROJECT NUMBER 472-83539	
		KEM NO. 02042	FILE tphase1
DESIGN	DRAWN	DATE 12/2002	SHEET 40
		REVISED 5/2003	OF 51

516 S. Market, Wichita, KS 67202 316/264-0242