

# TURKEY CREEK 3RD ADDITION

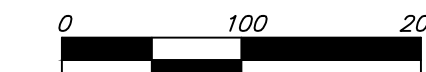
## WICHITA, SEDGWICK COUNTY, KANSAS

BOARD OF COUNTY COMMISSIONERS  
OF SEDGWICK COUNTY, KANSAS  
(DOC.#/FLM-PG-28758023)

BOARD OF COUNTY COMMISSIONERS  
OF SEDGWICK COUNTY, KANSAS  
(DOC.#/FLM-PG-28758023)

MINIMUM BUILDING PAD ELEVATIONS FOR  
LOWEST OPENING TO THE STRUCTURES

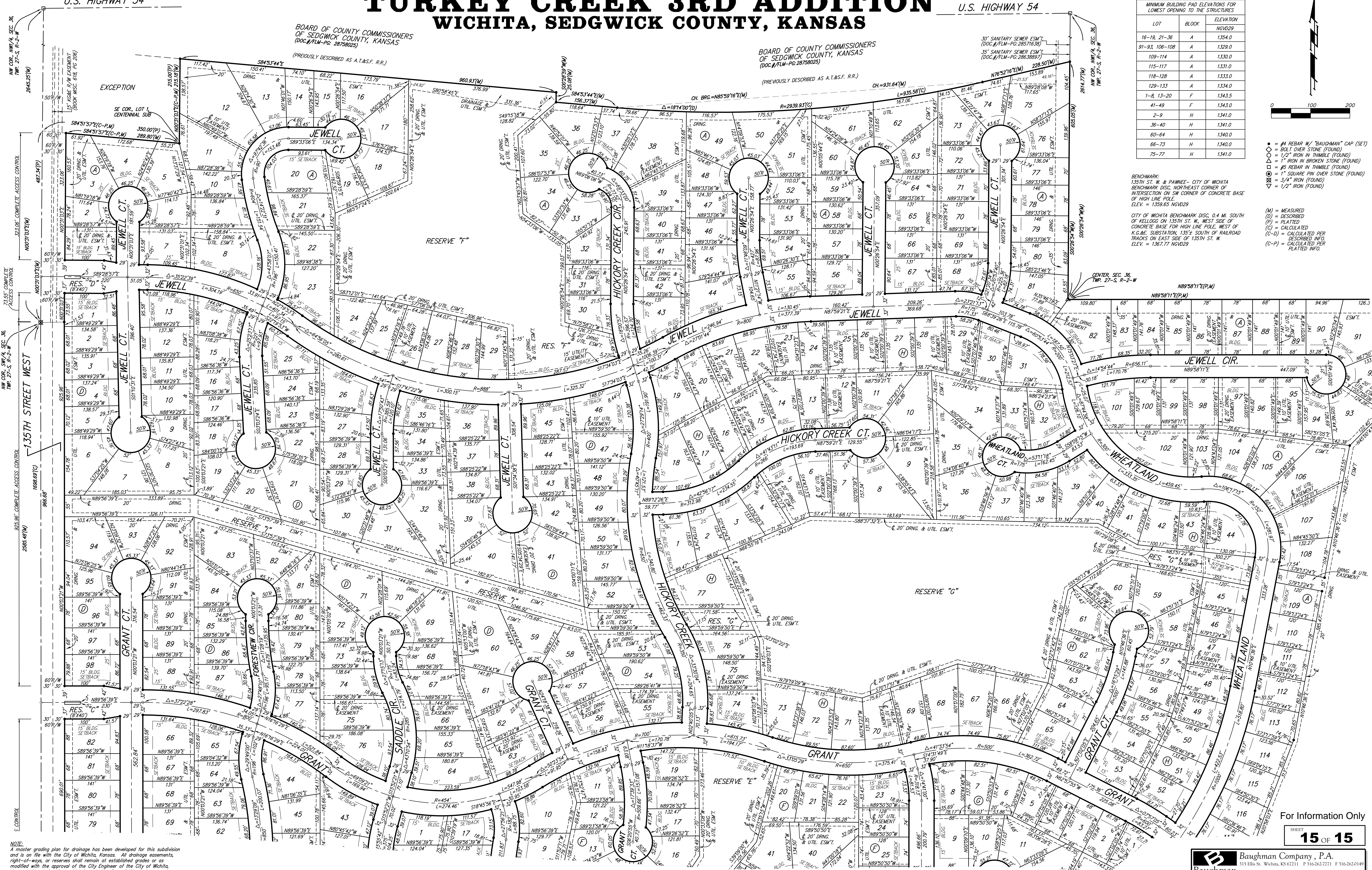
LOT	BLOCK	ELEVATION
16-19, 21-36	A	1354.0
91-93, 106-108	A	1329.0
109-114	A	1330.0
115-117	A	1331.0
118-128	A	1333.0
129-133	A	1334.0
1-8, 13-20	F	1343.5
41-49	F	1343.0
2-9	H	1341.0
36-40	H	1341.0
60-64	H	1340.0
66-73	H	1340.0
75-77	H	1341.0



- = #4 REBAR W/ "BAUGHMAN" CAP (SET)
- = BOLT OVER STONE (FOUND)
- ◇ = 1" IRON IN THIMBLE (FOUND)
- △ = 1" IRON IN BROKEN STONE (FOUND)
- = #5 REBAR IN THIMBLE (FOUND)
- ◇ = 1" SQUARE PIN OVER STONE (FOUND)
- ◇ = 3/4" IRON (FOUND)
- ◇ = 1/2" IRON (FOUND)

BENCHMARK:  
135TH ST. W. & PAWNEE - CITY OF WICHITA  
BENCHMARK DISC. NORTHEAST CORNER OF  
INTERSECTION ON SW CORNER OF CONCRETE BASE  
OF HIGH LINE POLE, WEST OF  
K.G.A.E. SUBSTATION, 135<sup>th</sup> SOUTH OF RAILROAD  
TRACKS ON EAST SIDE OF 135TH ST. W.  
ELEV. = 1359.65 NGVD29

(M) = MEASURED  
(D) = DESCRIBED  
(P) = PLATTED  
(C) = CALCULATED  
(C-D) = CALCULATED PER  
DESCRIBED INFO.  
(C-P) = CALCULATED PER  
PLATTED INFO.



NOTE:  
A master grading plan for drainage has been developed for this subdivision  
and is on file with the City of Wichita, Kansas. All drainage easements,  
right-of-ways, or reserves shall remain as established grades or as  
modified with the approval of the City Engineer of the City of Wichita,  
Kansas. No obstructions which impede the flow of this drainage system  
shall be allowed.

For Information Only

**Baughman** Baughman Engineering, P.A.  
315 Ellis St. Wichita, KS 67211 P 316-262-7271 F 316-262-0149  
ENGINEERING | SURVEYING | PLANNING | LANDSCAPE ARCHITECTURE  
E:\PLAT\TURKEYCREEK3RD.DWG\TURKEY3E.DWG\MCC