

BENCHMARKS:
 BM #1: 135th St. W. & Pawnee City of Wichita Benchmark Disc, northeast corner of intersection on SW corner of concrete base of high line pole. Elev. = 1359.65 NGVD29

BM #2: City of Wichita Benchmark Disc, 0.4 Mi. South of Kellogg on 135th St. W., west side of concrete base for high line pole, west of K.G.&E. Substation, 135± south of railroad tracks on east side of 135th St. W. Elev. = 1367.77 NGVD29

WL Sta. 0+13.61, Line 3
 BL Sta. -0+13.45, 19.95' Lt.
 1 - 8" CIMJ 45° Bend (Vert.)

WL Sta. 0+09.91, Line 3
 BL Sta. -0+17.14, 19.69' Lt.
 1 - 8" CIMJ 45° Bend (Vert.)

WL Sta. 0+00, Begin Line 3 =
 WL Sta. 5+40.12, Line 1
 BL Sta. -0+27.03, 19.00' Lt.

WL Sta. 0+33.61, Line 3
 BL Sta. 0+06.50, 21.34' Lt.
 1 - 8" CIMJ 45° Bend (Vert.)

WL Sta. 0+37.31, Line 3
 BL Sta. 0+10.19, 21.60' Lt.
 1 - 8" CIMJ 45° Bend (Vert.)

WL Sta. 0+57.35, Line 3-PC
 BL Sta. 0+30.18, 23.00' Lt.
 Defect Pipe 4'00'00" Rt.

WL Sta. 4+93.91, Line 3
 BL Sta. 4+60.75, 23.00' Lt.
 1-Fire Hydrant Assembly (L = 5')
 1 - 8"x6" CIMJ Reducer (E)
 Bury Line Elev. = 1334.00
 Valve Box Elev. = 1334.10

WL Sta. 6+93.38, Line 3
 BL Sta. 6+60.22, 23.00' Lt.
 1 - 6" CIMJ 45° Bend

WL Sta. 7+32.33, Line 3
 BL Sta. 6+87.76, 4.54' Rt.
 1 - 6" CIMJ 45° Bend

WL Sta. 7+69.48, Line 3
 BL Sta. 6+87.76, 41.70' Rt.
 1 - 6" CIMJ 45° Bend

WL Sta. 8+73.55, End Line 3
 BL Sta. 6+03.30, 32.44' Rt.
 1-2" Blowoff Assy.
 Valve Box Elev. = 1333.20

WL Sta. 7+96.40, Line 3
 BL Sta. 6+68.74, 60.73' Rt.
 1 - 6" CIMJ 45° Bend

WL Sta. 7+96.40, Line 3
 BL Sta. 6+68.74, 60.73' Rt.
 1 - 6" CIMJ 45° Bend

WL Sta. 8+73.55, End Line 3
 BL Sta. 6+03.30, 32.44' Rt.
 1-2" Blowoff Assy.
 Valve Box Elev. = 1333.20

WL Sta. 8+73.55, End Line 3
 BL Sta. 6+03.30, 32.44' Rt.
 1-2" Blowoff Assy.
 Valve Box Elev. = 1333.20

WL Sta. 8+73.55, End Line 3
 BL Sta. 6+03.30, 32.44' Rt.
 1-2" Blowoff Assy.
 Valve Box Elev. = 1333.20

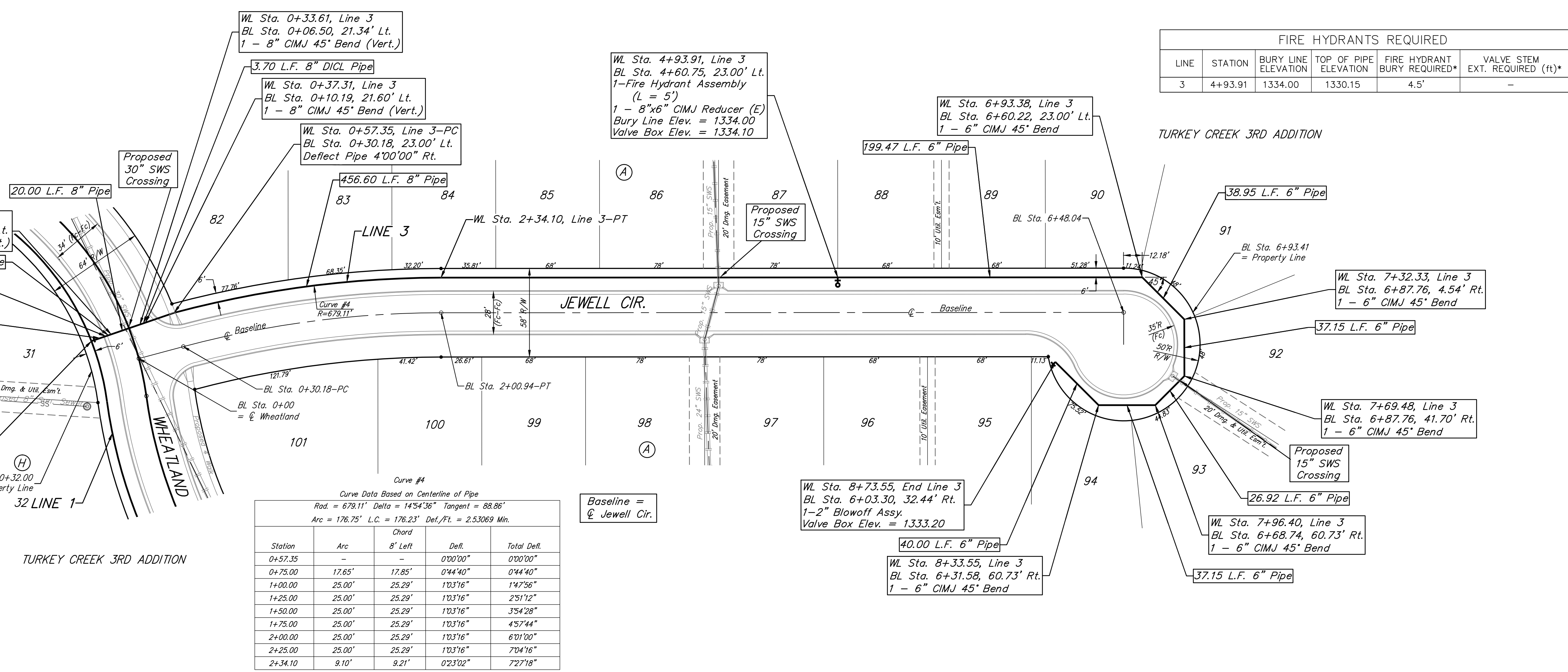
WL Sta. 8+73.55, End Line 3
 BL Sta. 6+03.30, 32.44' Rt.
 1-2" Blowoff Assy.
 Valve Box Elev. = 1333.20

WL Sta. 8+73.55, End Line 3
 BL Sta. 6+03.30, 32.44' Rt.
 1-2" Blowoff Assy.
 Valve Box Elev. = 1333.20

WL Sta. 8+73.55, End Line 3
 BL Sta. 6+03.30, 32.44' Rt.
 1-2" Blowoff Assy.
 Valve Box Elev. = 1333.20

WL Sta. 8+73.55, End Line 3
 BL Sta. 6+03.30, 32.44' Rt.
 1-2" Blowoff Assy.
 Valve Box Elev. = 1333.20

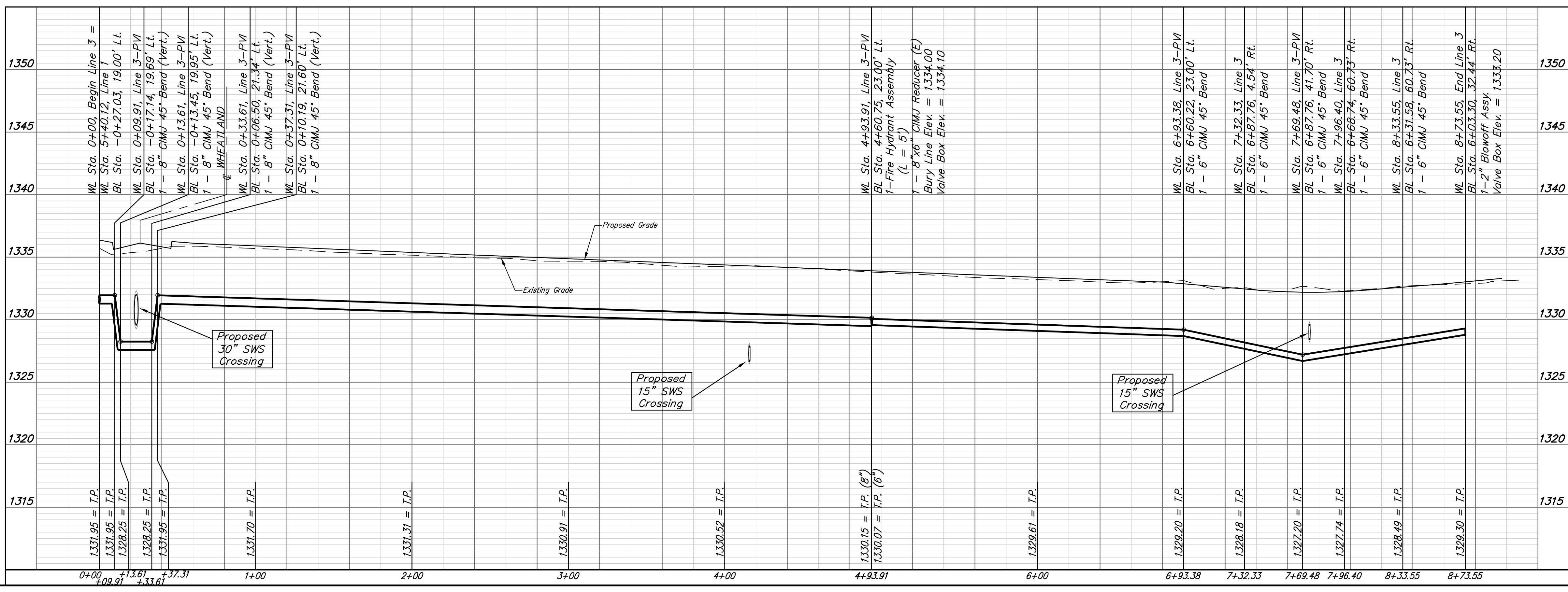
WL Sta. 8+73.55, End Line 3
 BL Sta. 6+03.30, 32.44' Rt.
 1-2" Blowoff Assy.
 Valve Box Elev. = 1333.20



FIRE HYDRANTS REQUIRED					
LINE	STATION	BURY LINE ELEVATION	TOP OF PIPE ELEVATION	FIRE HYDRANT BURY REQUIRED*	VALVE STEM EXT. REQUIRED (ft)*
3	4+93.91	1334.00	1330.15	4.5'	-

Curve #4
 Curve Data Based on Centerline of Pipe
 Rad = 679.11' Delta = 14°54'36" Tangent = 88.86'
 Arc = 176.75' L.C. = 176.23' Def./Pt. = 2.53069 Min.

Station	Arc	Chord	Defl.	Total Defl.
0+57.35	-	-	0°00'00"	0°00'00"
0+75.00	17.65'	17.85'	0°44'40"	0°44'40"
1+00.00	25.00'	25.29'	1°03'16"	1°47'56"
1+25.00	25.00'	25.29'	1°03'16"	2°51'12"
1+50.00	25.00'	25.29'	1°03'16"	3°54'28"
1+75.00	25.00'	25.29'	1°03'16"	4°57'44"
2+00.00	25.00'	25.29'	1°03'16"	6°01'00"
2+25.00	25.00'	25.29'	1°03'16"	7°04'16"
2+34.10	9.10'	9.21'	0°23'02"	7°27'18"



Baughman Turkey Creek 3rd Addition - Phase 3A
LINE 3
 Water Distribution System

Baughman Company, P.A. 315 Ellis St. Wichita, KS 67211 P 316-262-7271 F 316-262-0149
 ENGINEERING | SURVEYING | PLANNING | LANDSCAPE ARCHITECTURE

PROJECT NUMBER: 448-90264
 DESIGN: AEG
 DRAWN: JAK
 APPROVED: [Signature]
 DATE: 1/11/16

REVISIONS:

SCALE: Noted
 SHEET: **6 OF 15**

E:\Projects\Turkey Creek 3rd\Engineering\Phase 3A\Wtr_1345E47\WTR_PLANS.dwg