

©2016
 MKEC Engineering
 All Rights Reserved
 www.mkec.com
 These drawings and their contents, including, but not limited to, all concepts, designs, & ideas are the exclusive property of MKEC Engineering (MKEC), and may not be used or reproduced in any way without the express consent of MKEC.

PALMETTO STREET

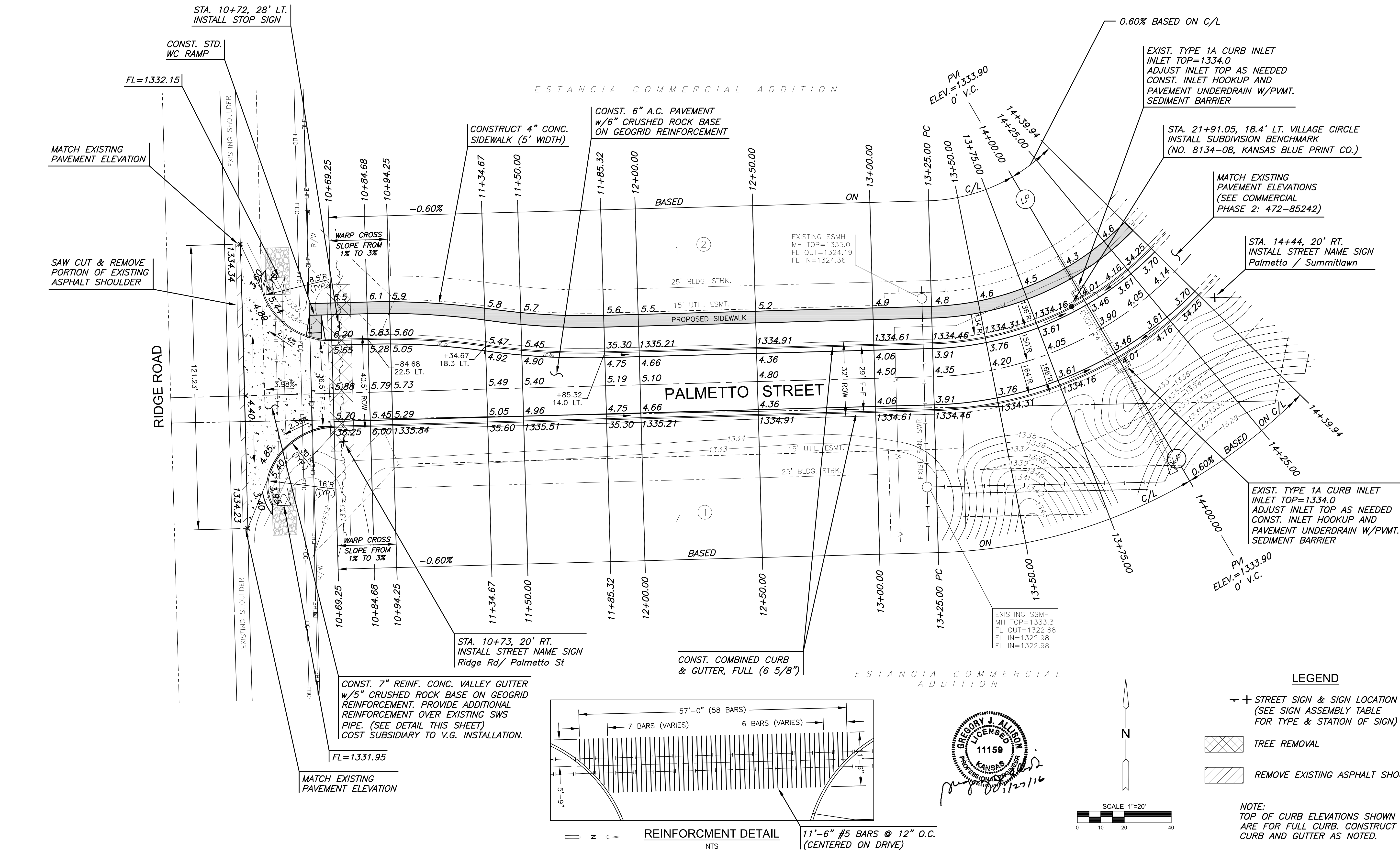
PROJECT NO.	472-85241	
DATE	JAN. 2016	
SCALE	1" = 20'	
DESIGNED	DRAWN	CHECKED
DFL	JWC	GJA

NO.	REVISION	DATE
-----	----------	------

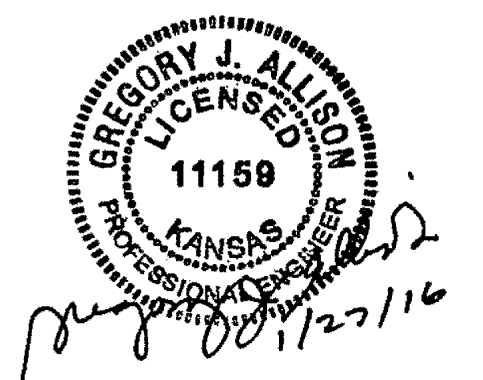
SHEET NO.

SUBDIVISION BENCH MARKS				
NO.	STREET AND STATION	FROM CL	DESCRIPTION	ELEVATIONS
2	VILLAGE CIRCLE, STA. 21+91.05	18.5 LT.	TOP OF CURB AT W END OF INLET HOOKUP	

NOTE: CONTRACTOR SHALL INSTALL SUBDIVISION BENCH MARKS ("FLAT SURVEY MARKERS NO. 8134-08 3" TOP DIAMETER" PROVIDED BY KANSAS BLUE PRINT CO., INC.) COSTS TO BE CONSIDERED SUBSIDIARY TO CONSTRUCTION OF COMBINED CURB AND GUTTER.



PLOTTED: Wednesday, January 27, 2016 8:08:09AM
 J:\PROJECTS\2016\1401010482_PALMETTO_STREET_PAVING\COMMERCIAL\PH1\472-85241_P1.dwg



LEGEND

- ✦ STREET SIGN & SIGN LOCATION (SEE SIGN ASSEMBLY TABLE FOR TYPE & STATION OF SIGN)
- ▨ TREE REMOVAL
- ▨ REMOVE EXISTING ASPHALT SHOULDER

NOTE:
 TOP OF CURB ELEVATIONS SHOWN ARE FOR FULL CURB. CONSTRUCT CURB AND GUTTER AS NOTED.

SCALE: 1"=20'

