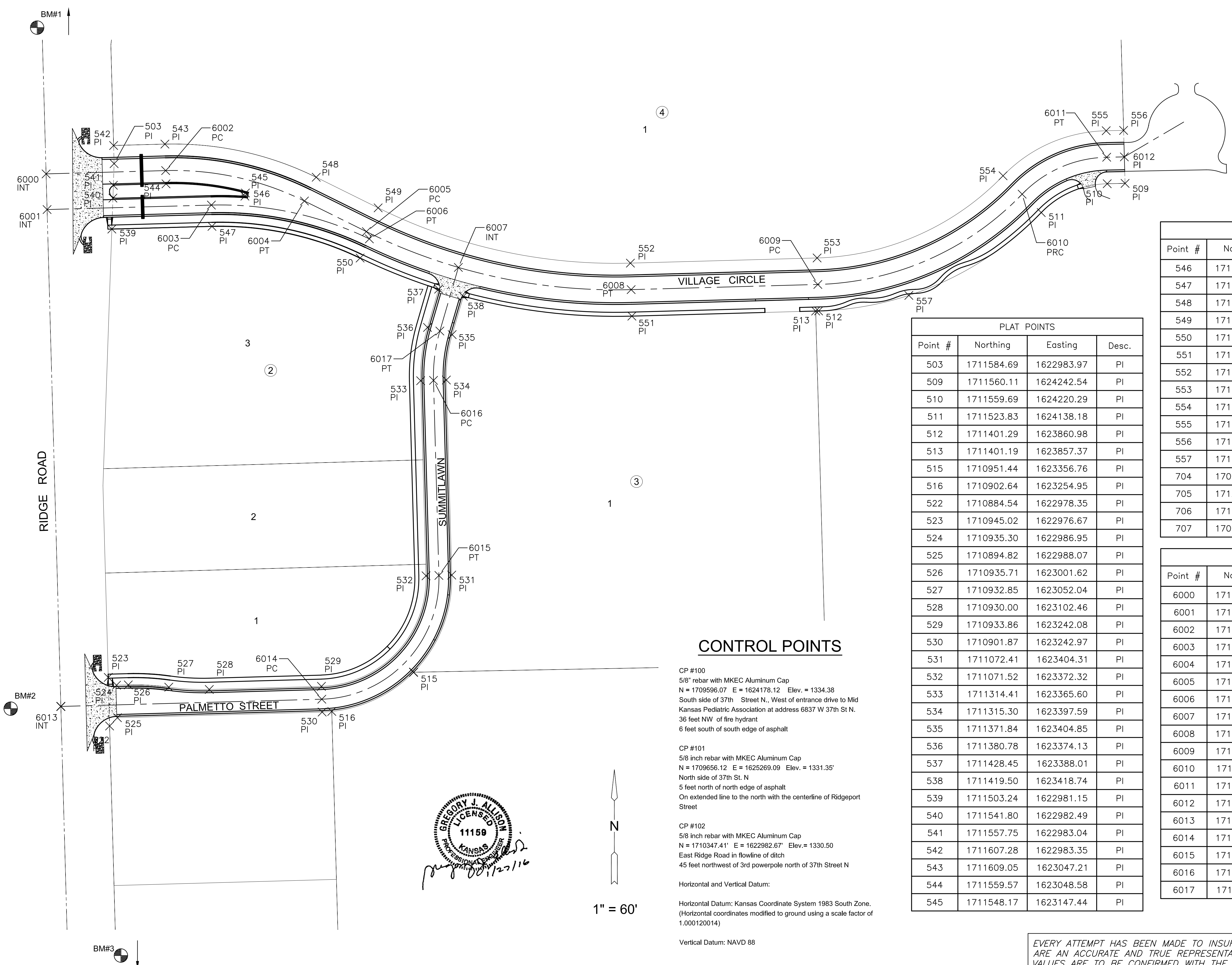


PAVING PLANS FOR
ESTANCIA COMMERCIAL ADD.
PHASE 2



PLAT POINTS

Point #	Northing	Easting	Desc.
503	1711584.69	1622983.97	PI
509	1711560.11	1624242.54	PI
510	1711559.69	1624220.29	PI
511	1711523.83	1624138.18	PI
512	1711401.29	1623860.98	PI
513	1711401.19	1623857.37	PI
515	1710951.44	1623356.76	PI
516	1710902.64	1623254.95	PI
522	1710884.54	1622978.35	PI
523	1710945.02	1622976.67	PI
524	1710935.30	1622986.95	PI
525	1710894.82	1622988.07	PI
526	1710935.71	1623001.62	PI
527	1710932.85	1623052.04	PI
528	1710930.00	1623102.46	PI
529	1710933.86	1623242.08	PI
530	1710901.87	1623242.97	PI
531	1711072.41	1623404.31	PI
532	1711071.52	1623372.32	PI
533	1711314.41	1623365.60	PI
534	1711315.30	1623397.59	PI
535	1711371.84	1623404.85	PI
536	1711380.78	1623374.13	PI
537	1711428.45	1623388.01	PI
538	1711419.50	1623418.74	PI
539	1711503.24	1622981.15	PI
540	1711541.80	1622982.49	PI
541	1711557.75	1622983.04	PI
542	1711607.28	1622983.35	PI
543	1711609.05	1623047.21	PI
544	1711559.57	1623048.58	PI
545	1711548.17	1623147.44	PI

PLAT POINTS

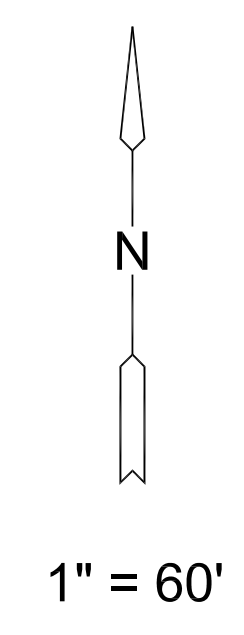
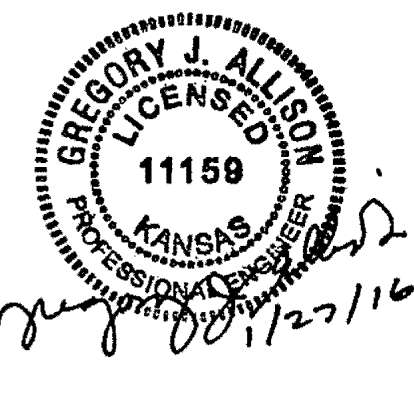
Point #	Northing	Easting	Desc.
546	1711544.24	1623146.80	PI
547	1711506.63	1623105.80	PI
548	1711567.77	1623235.56	PI
549	1711529.65	1623312.66	PI
550	1711467.17	1623290.22	PI
551	1711394.85	1623628.56	PI
552	1711460.83	1623626.73	PI
553	1711467.26	1623859.15	PI
554	1711569.58	1624090.61	PI
555	1711625.68	1624219.05	PI
556	1711626.09	1624240.72	PI
557	1711420.66	1623973.36	PI
704	1709581.66	1622954.40	SC
705	1712214.54	1622881.50	SC
706	1712264.39	1625524.30	SC
707	1709638.05	1625585.96	SC

PAVING POINTS

Point #	Northing	Easting	Desc.
6000	1711571.94	1622899.29	INT
6001	1711527.56	1622900.52	INT
6002	1711576.06	1623048.12	PC
6003	1711533.12	1623105.08	PC
6004	1711538.19	1623220.93	PT
6005	1711500.07	1623298.04	PC
6006	1711491.04	1623301.72	PT
6007	1711455.49	1623412.55	INT
6008	1711427.84	1623627.64	PT
6009	1711434.27	1623860.06	PC
6010	1711546.71	1624114.40	PRC
6011	1711592.69	1624219.67	PT
6012	1711593.10	1624241.63	PI
6013	1710908.87	1622917.65	INT
6014	1710917.87	1623242.53	PC
6015	1711071.96	1623388.32	PT
6016	1711314.85	1623381.59	PC
6017	1711376.31	1623389.49	PT

CONTROL POINTS

- CP #100
5/8" rebar with MKEC Aluminum Cap
N = 1709596.07 E = 1624178.12 Elev. = 1334.38
South side of 37th Street N., West of entrance drive to Mid Kansas Pediatric Association at address 6837 W 37th St N.
36 feet NW of fire hydrant
6 feet south of south edge of asphalt
- CP #101
5/8 inch rebar with MKEC Aluminum Cap
N = 1709656.12 E = 1625269.09 Elev. = 1331.35'
North side of 37th St. N
5 feet north of north edge of asphalt
On extended line to the north with the centerline of Ridgeport Street
- CP #102
5/8 inch rebar with MKEC Aluminum Cap
N = 1710347.41' E = 1622982.67' Elev. = 1330.50
East Ridge Road in flowline of ditch
45 feet northwest of 3rd powerpole north of 37th Street N
- Horizontal and Vertical Datum:
Horizontal Datum: Kansas Coordinate System 1983 South Zone.
(Horizontal coordinates modified to ground using a scale factor of 1.000120014)
Vertical Datum: NAVD 88



EVERY ATTEMPT HAS BEEN MADE TO INSURE ALL COORDINATE VALUES SHOWN ARE AN ACCURATE AND TRUE REPRESENTATION OF THE CURRENT PLANS. ALL VALUES ARE TO BE CONFIRMED WITH THE FINAL SIGNED PLAN SET BEFORE USE.

PROJECT: S20141010482_PREMIER_ESTANCIA05-CIVIL-CAD/PAY/COMMERCIAL/PH2/14462-BUBBLE.DWG PLOTTED: Wednesday, January 27, 2016 @ 11:16AM

©2016 MKEC Engineering All Rights Reserved
www.mkec.com
These drawings and their contents, including, but not limited to, all concepts, designs, & ideas are the exclusive property of MKEC Engineering (MKEC), and may not be used or reproduced in any way without the express consent of MKEC.

BUBBLE MAP

PROJECT NO.	472-85242	
DATE	JAN. 2016	
SCALE	1" = 60'	
DESIGNED	DRAWN	CHECKED
DFL	JWC	GJA
NO.	REVISION	DATE
SHEET NO.		
8 OF 17		