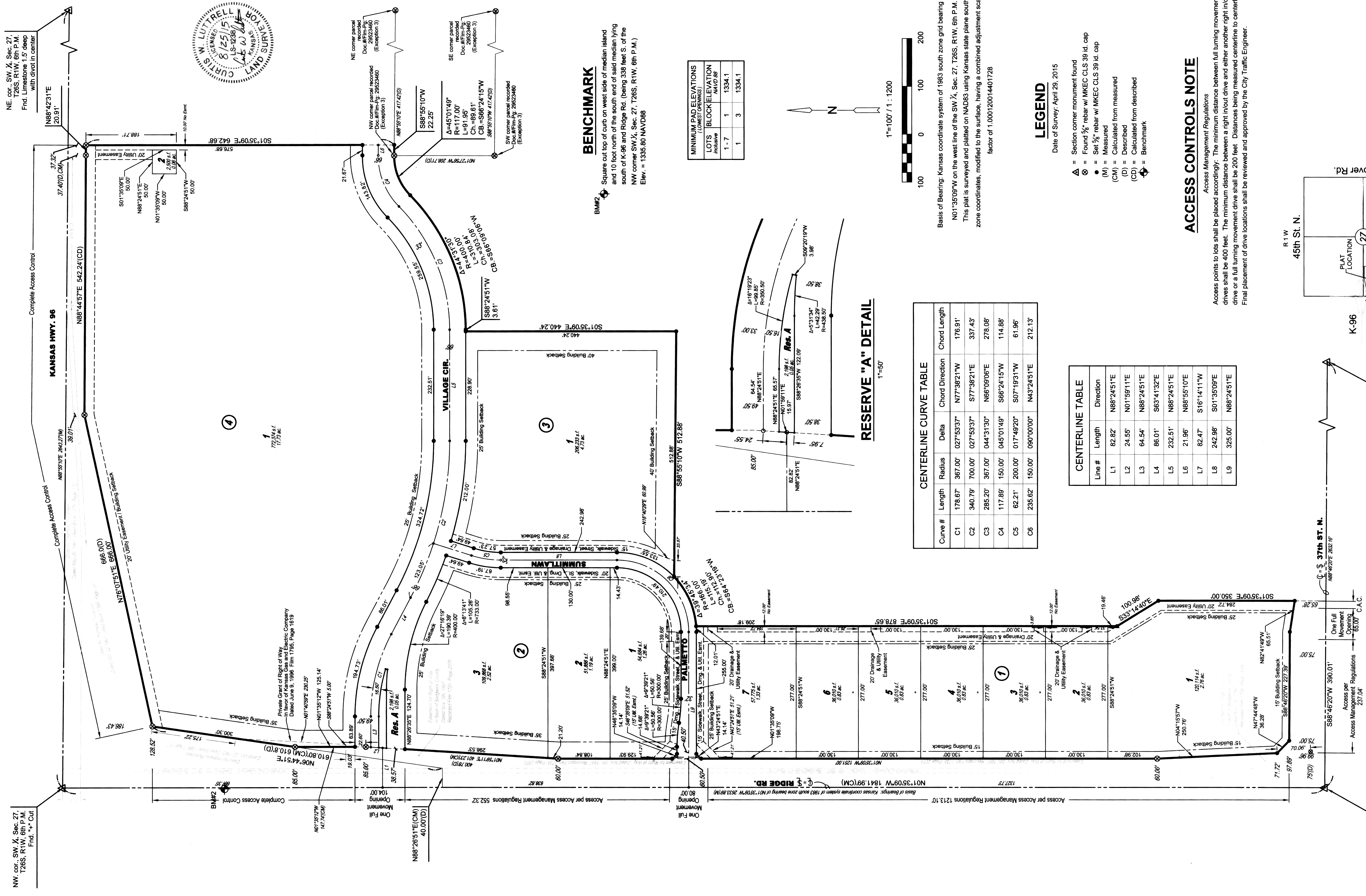


FINAL PLAT

ESTANCIA COMMERCIAL ADDITION

AN ADDITION TO WICHITA, SEDGWICK COUNTY, KANSAS



NW cor., SW 1/4, Sec. 27, T26S, R1W, 6th P.M. Fnd. Limestone 1.5' deep with divot in center

NE cor., SW 1/4, Sec. 27, T26S, R1W, 6th P.M. Fnd. Limestone 1.5' deep with divot in center

NW cor., SW 1/4, Sec. 27, T26S, R1W, 6th P.M. Fnd. Mag nail in asphalt roadway

NE cor., SW 1/4, Sec. 27, T26S, R1W, 6th P.M. Fnd. Limestone 1.5' deep with divot in center

SW cor., SW 1/4, Sec. 27, T26S, R1W, 6th P.M. Fnd. Mag nail in asphalt roadway

NE cor., SW 1/4, Sec. 27, T26S, R1W, 6th P.M. Fnd. Limestone 1.5' deep with divot in center

SW cor., SW 1/4, Sec. 27, T26S, R1W, 6th P.M. Fnd. Mag nail in asphalt roadway

NE cor., SW 1/4, Sec. 27, T26S, R1W, 6th P.M. Fnd. Limestone 1.5' deep with divot in center

SW cor., SW 1/4, Sec. 27, T26S, R1W, 6th P.M. Fnd. Mag nail in asphalt roadway

NE cor., SW 1/4, Sec. 27, T26S, R1W, 6th P.M. Fnd. Limestone 1.5' deep with divot in center

SW cor., SW 1/4, Sec. 27, T26S, R1W, 6th P.M. Fnd. Mag nail in asphalt roadway

NE cor., SW 1/4, Sec. 27, T26S, R1W, 6th P.M. Fnd. Limestone 1.5' deep with divot in center

SW cor., SW 1/4, Sec. 27, T26S, R1W, 6th P.M. Fnd. Mag nail in asphalt roadway

NE cor., SW 1/4, Sec. 27, T26S, R1W, 6th P.M. Fnd. Limestone 1.5' deep with divot in center

SW cor., SW 1/4, Sec. 27, T26S, R1W, 6th P.M. Fnd. Mag nail in asphalt roadway

NE cor., SW 1/4, Sec. 27, T26S, R1W, 6th P.M. Fnd. Limestone 1.5' deep with divot in center

SW cor., SW 1/4, Sec. 27, T26S, R1W, 6th P.M. Fnd. Mag nail in asphalt roadway

NE cor., SW 1/4, Sec. 27, T26S, R1W, 6th P.M. Fnd. Limestone 1.5' deep with divot in center

SW cor., SW 1/4, Sec. 27, T26S, R1W, 6th P.M. Fnd. Mag nail in asphalt roadway

NE cor., SW 1/4, Sec. 27, T26S, R1W, 6th P.M. Fnd. Limestone 1.5' deep with divot in center

SW cor., SW 1/4, Sec. 27, T26S, R1W, 6th P.M. Fnd. Mag nail in asphalt roadway

NE cor., SW 1/4, Sec. 27, T26S, R1W, 6th P.M. Fnd. Limestone 1.5' deep with divot in center

SW cor., SW 1/4, Sec. 27, T26S, R1W, 6th P.M. Fnd. Mag nail in asphalt roadway

NE cor., SW 1/4, Sec. 27, T26S, R1W, 6th P.M. Fnd. Limestone 1.5' deep with divot in center

SW cor., SW 1/4, Sec. 27, T26S, R1W, 6th P.M. Fnd. Mag nail in asphalt roadway

NE cor., SW 1/4, Sec. 27, T26S, R1W, 6th P.M. Fnd. Limestone 1.5' deep with divot in center

SW cor., SW 1/4, Sec. 27, T26S, R1W, 6th P.M. Fnd. Mag nail in asphalt roadway

NE cor., SW 1/4, Sec. 27, T26S, R1W, 6th P.M. Fnd. Limestone 1.5' deep with divot in center

SW cor., SW 1/4, Sec. 27, T26S, R1W, 6th P.M. Fnd. Mag nail in asphalt roadway

NE cor., SW 1/4, Sec. 27, T26S, R1W, 6th P.M. Fnd. Limestone 1.5' deep with divot in center

SW cor., SW 1/4, Sec. 27, T26S, R1W, 6th P.M. Fnd. Mag nail in asphalt roadway

NE cor., SW 1/4, Sec. 27, T26S, R1W, 6th P.M. Fnd. Limestone 1.5' deep with divot in center

SW cor., SW 1/4, Sec. 27, T26S, R1W, 6th P.M. Fnd. Mag nail in asphalt roadway

NE cor., SW 1/4, Sec. 27, T26S, R1W, 6th P.M. Fnd. Limestone 1.5' deep with divot in center

SW cor., SW 1/4, Sec. 27, T26S, R1W, 6th P.M. Fnd. Mag nail in asphalt roadway

NE cor., SW 1/4, Sec. 27, T26S, R1W, 6th P.M. Fnd. Limestone 1.5' deep with divot in center

SW cor., SW 1/4, Sec. 27, T26S, R1W, 6th P.M. Fnd. Mag nail in asphalt roadway

NE cor., SW 1/4, Sec. 27, T26S, R1W, 6th P.M. Fnd. Limestone 1.5' deep with divot in center

SW cor., SW 1/4, Sec. 27, T26S, R1W, 6th P.M. Fnd. Mag nail in asphalt roadway

NE cor., SW 1/4, Sec. 27, T26S, R1W, 6th P.M. Fnd. Limestone 1.5' deep with divot in center

SW cor., SW 1/4, Sec. 27, T26S, R1W, 6th P.M. Fnd. Mag nail in asphalt roadway

NE cor., SW 1/4, Sec. 27, T26S, R1W, 6th P.M. Fnd. Limestone 1.5' deep with divot in center

SW cor., SW 1/4, Sec. 27, T26S, R1W, 6th P.M. Fnd. Mag nail in asphalt roadway

NE cor., SW 1/4, Sec. 27, T26S, R1W, 6th P.M. Fnd. Limestone 1.5' deep with divot in center

SW cor., SW 1/4, Sec. 27, T26S, R1W, 6th P.M. Fnd. Mag nail in asphalt roadway

NE cor., SW 1/4, Sec. 27, T26S, R1W, 6th P.M. Fnd. Limestone 1.5' deep with divot in center

SW cor., SW 1/4, Sec. 27, T26S, R1W, 6th P.M. Fnd. Mag nail in asphalt roadway

NE cor., SW 1/4, Sec. 27, T26S, R1W, 6th P.M. Fnd. Limestone 1.5' deep with divot in center

SW cor., SW 1/4, Sec. 27, T26S, R1W, 6th P.M. Fnd. Mag nail in asphalt roadway

NE cor., SW 1/4, Sec. 27, T26S, R1W, 6th P.M. Fnd. Limestone 1.5' deep with divot in center

SW cor., SW 1/4, Sec. 27, T26S, R1W, 6th P.M. Fnd. Mag nail in asphalt roadway

NE cor., SW 1/4, Sec. 27, T26S, R1W, 6th P.M. Fnd. Limestone 1.5' deep with divot in center

SW cor., SW 1/4, Sec. 27, T26S, R1W, 6th P.M. Fnd. Mag nail in asphalt roadway

NE cor., SW 1/4, Sec. 27, T26S, R1W, 6th P.M. Fnd. Limestone 1.5' deep with divot in center

SW cor., SW 1/4, Sec. 27, T26S, R1W, 6th P.M. Fnd. Mag nail in asphalt roadway

NE cor., SW 1/4, Sec. 27, T26S, R1W, 6th P.M. Fnd. Limestone 1.5' deep with divot in center

SW cor., SW 1/4, Sec. 27, T26S, R1W, 6th P.M. Fnd. Mag nail in asphalt roadway

NE cor., SW 1/4, Sec. 27, T26S, R1W, 6th P.M. Fnd. Limestone 1.5' deep with divot in center

SW cor., SW 1/4, Sec. 27, T26S, R1W, 6th P.M. Fnd. Mag nail in asphalt roadway

NE cor., SW 1/4, Sec. 27, T26S, R1W, 6th P.M. Fnd. Limestone 1.5' deep with divot in center

SW cor., SW 1/4, Sec. 27, T26S, R1W, 6th P.M. Fnd. Mag nail in asphalt roadway

NE cor., SW 1/4, Sec. 27, T26S, R1W, 6th P.M. Fnd. Limestone 1.5' deep with divot in center

SW cor., SW 1/4, Sec. 27, T26S, R1W, 6th P.M. Fnd. Mag nail in asphalt roadway

NE cor., SW 1/4, Sec. 27, T26S, R1W, 6th P.M. Fnd. Limestone 1.5' deep with divot in center

SW cor., SW 1/4, Sec. 27, T26S, R1W, 6th P.M. Fnd. Mag nail in asphalt roadway

NE cor., SW 1/4, Sec. 27, T26S, R1W, 6th P.M. Fnd. Limestone 1.5' deep with divot in center

SW cor., SW 1/4, Sec. 27, T26S, R1W, 6th P.M. Fnd. Mag nail in asphalt roadway

NE cor., SW 1/4, Sec. 27, T26S, R1W, 6th P.M. Fnd. Limestone 1.5' deep with divot in center

SW cor., SW 1/4, Sec. 27, T26S, R1W, 6th P.M. Fnd. Mag nail in asphalt roadway

NE cor., SW 1/4, Sec. 27, T26S, R1W, 6th P.M. Fnd. Limestone 1.5' deep with divot in center

ACCESS CONTROLS NOTE

Access Management Regulations
Access points to lots shall be placed accordingly. The minimum distance between full turning movement drives shall be 400 feet. The minimum distance between a right in/out drive and either another right in/out drive or a full turning movement drive shall be 200 feet. Distances being measured centerline to centerline. Final placement of drive locations shall be reviewed and approved by the City Traffic Engineer.

LEGEND

- △ = Section corner monument found
- ⊗ = Found 3/4" rebar w/ MKEC CLS 39 id. cap
- = Set 3/4" rebar w/ MKEC CLS 39 id. cap
- (M) = Measured
- (CM) = Calculated from measured
- (CD) = Described
- ⚡ = Benchmark

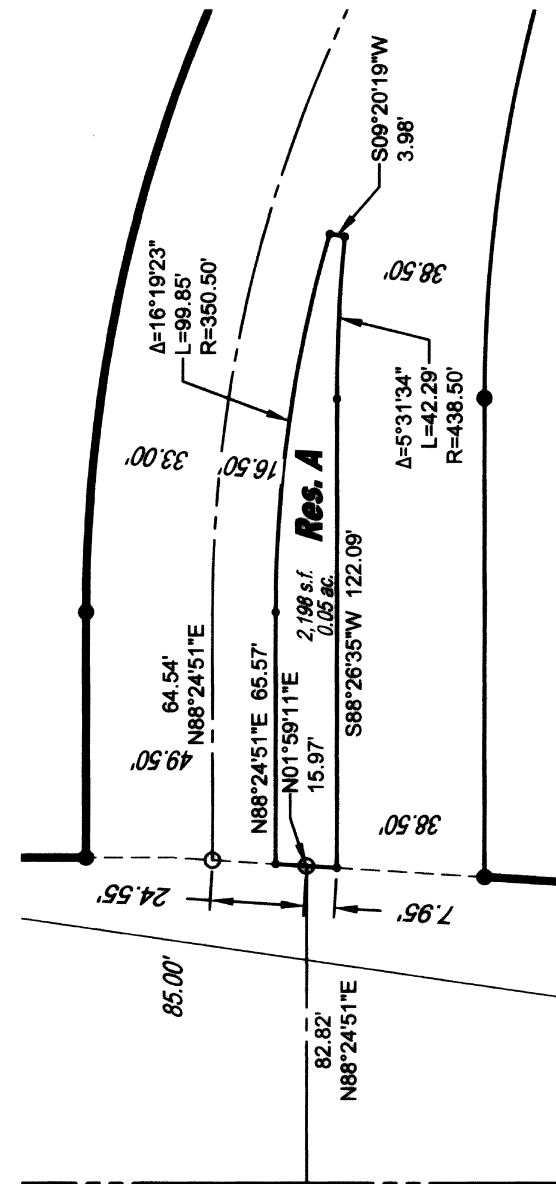
CENTERLINE TABLE

Line #	Length	Direction
L1	82.82'	N88°24'51"E
L2	24.55'	N01°59'11"E
L3	64.54'	N88°24'51"E
L4	86.01'	S63°41'32"E
L5	232.51'	N88°24'51"E
L6	21.96'	N88°55'10"E
L7	82.47'	S16°14'11"W
L8	242.98'	S01°35'09"E
L9	325.00'	N88°24'51"E

CENTERLINE CURVE TABLE

Curve #	Length	Radius	Delta	Chord Direction	Chord Length
C1	178.67'	367.00'	027°53'37"	N77°38'21"W	176.91'
C2	340.79'	700.00'	027°53'37"	S77°38'21"E	337.43'
C3	285.20'	367.00'	044°31'30"	N86°09'06"E	278.08'
C4	117.89'	150.00'	045°01'49"	S66°24'15"W	114.88'
C5	62.21'	200.00'	017°49'20"	S07°19'31"W	61.96'
C6	235.62'	150.00'	090°00'00"	N43°24'51"E	212.13'

RESERVE "A" DETAIL

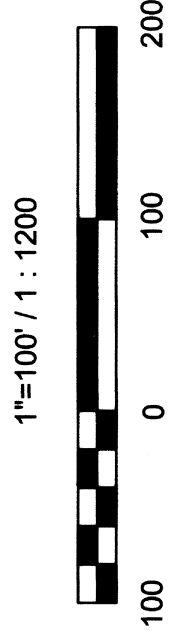


MINIMUM PAD ELEVATIONS

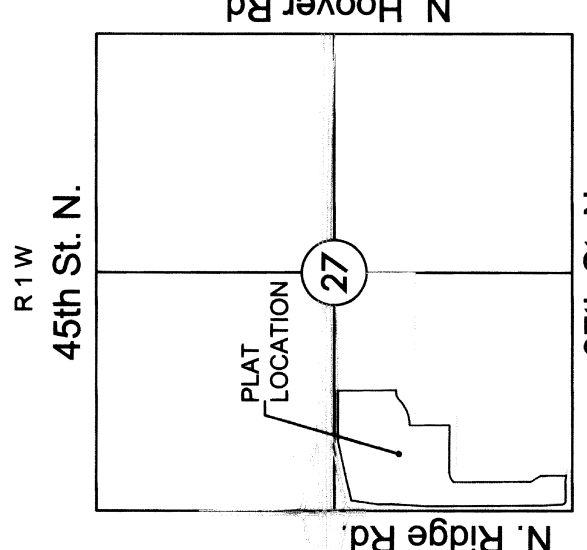
LOTS	BLOCK ELEVATION	NAVD 88
1-7	1	1334.1
1	3	1334.1

BENCHMARK

Square cut top of curb on west side of median island and 10 foot north of the south end of said median lying south of K-96 and Ridge Rd. (being 538 feet S. of the NW corner SW 1/4, Sec. 27, T26S, R1W, 6th P.M.)
Elev. = 1335.80 NAVD88



Basis of Bearing: Kansas coordinate system of 1983 south zone grid bearing of N01°35'09"W on the west line of the SW 1/4, Sec. 27, T26S, R1W, 6th P.M.
This plat is surveyed and platted on NAD83 using Kansas state plane south zone coordinates, modified to the surface, having a combined adjustment scale factor of 1.000120014401728



SE cor., SW 1/4, Sec. 27, T26S, R1W, 6th P.M. Fnd. 3/4" Rebar

P.O.B.

SW cor., SW 1/4, Sec. 27, T26S, R1W, 6th P.M. Fnd. Mag nail in asphalt roadway