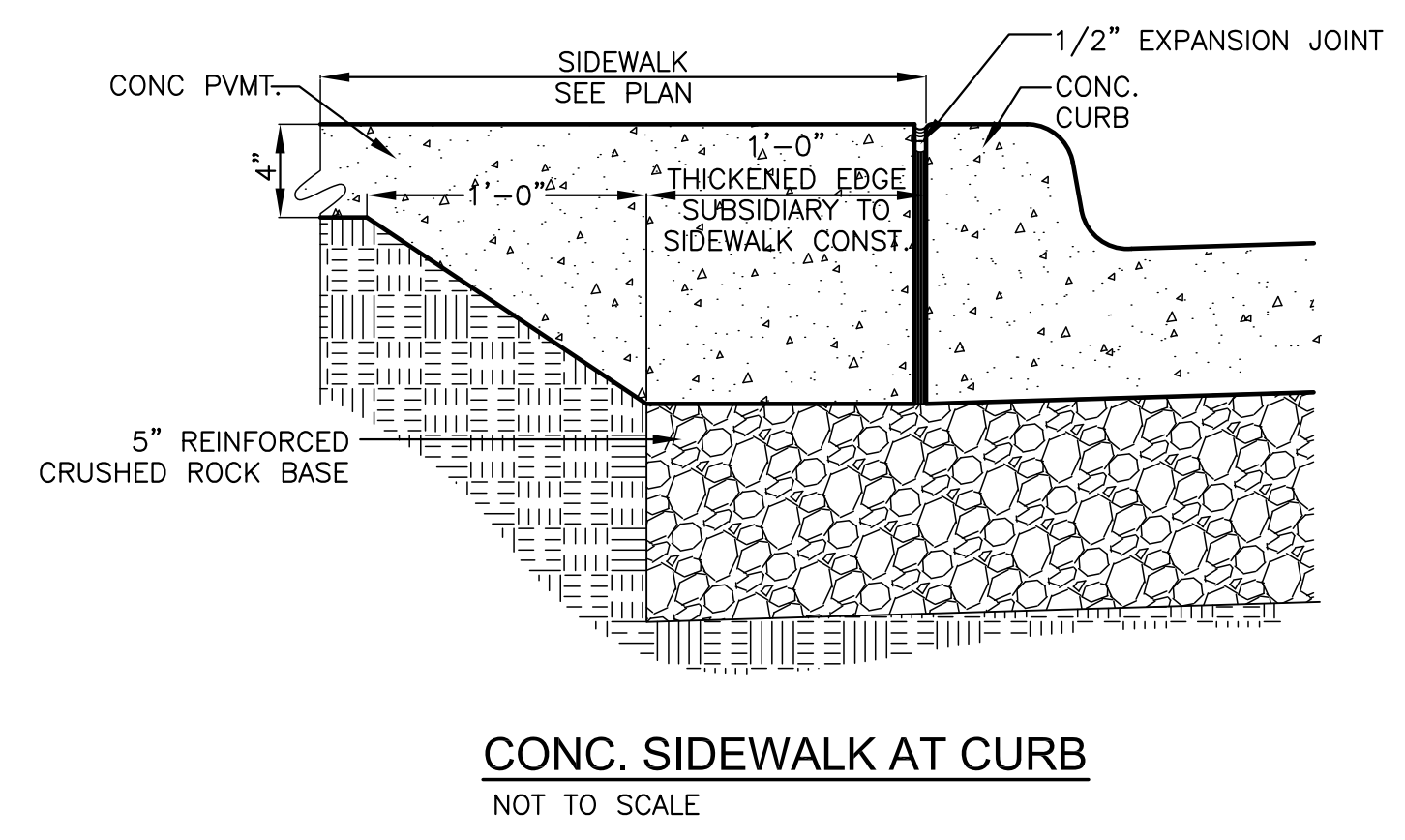
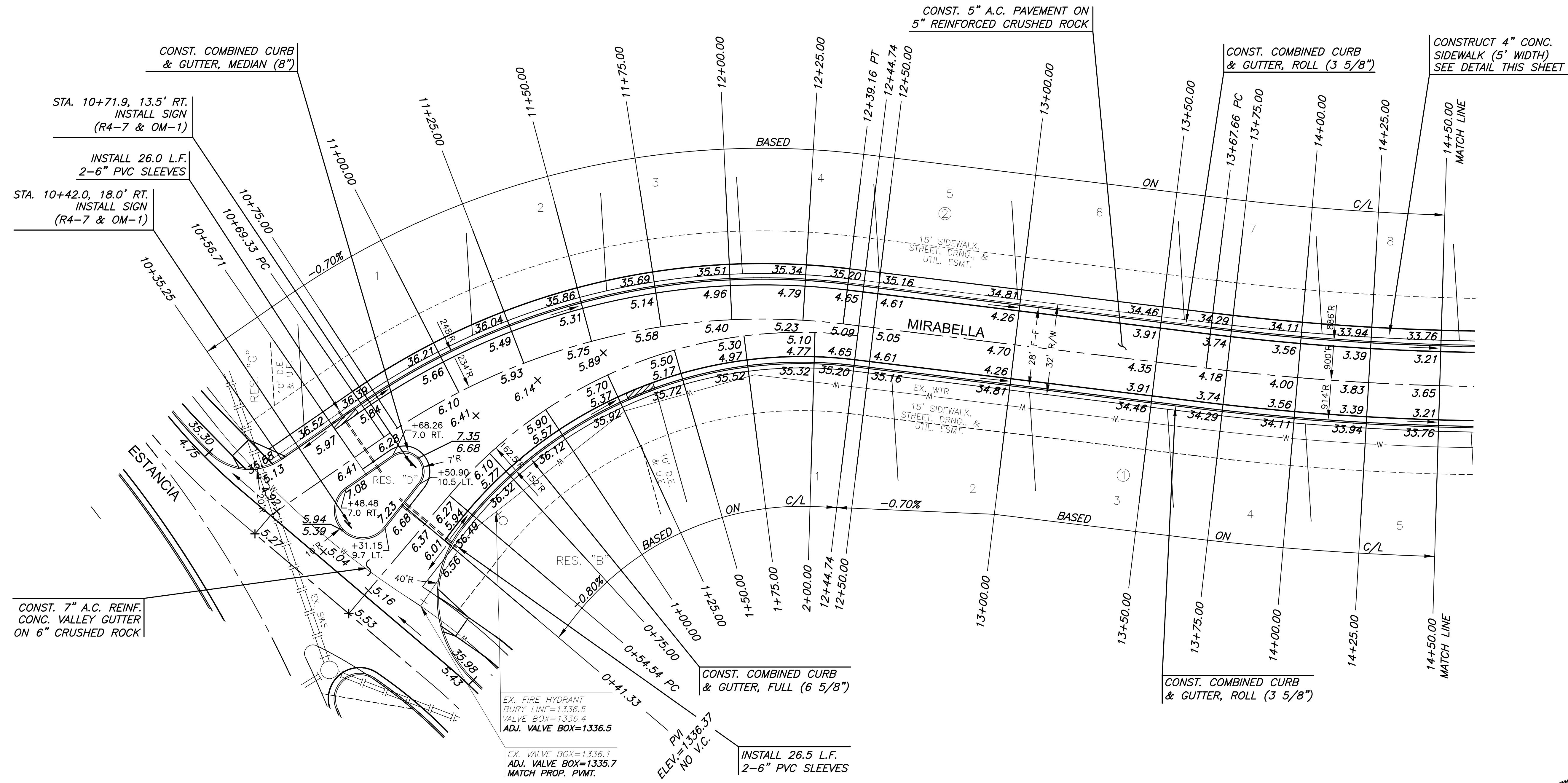


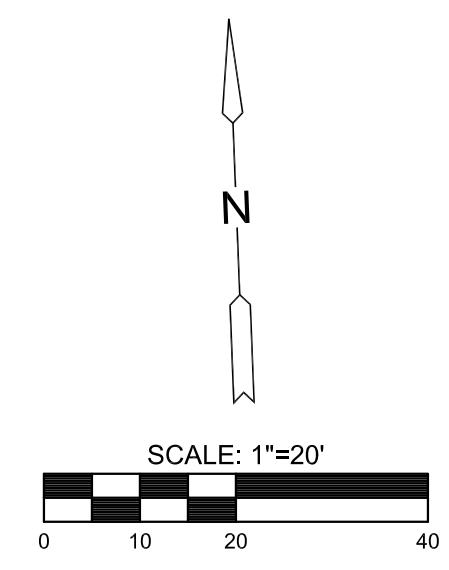
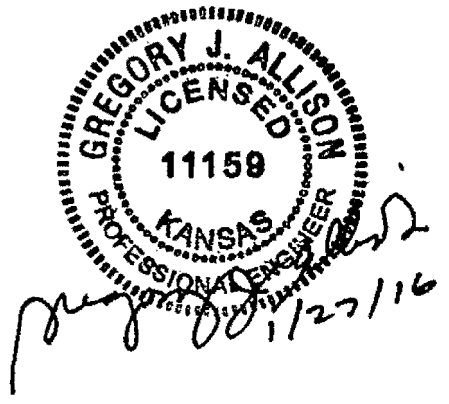
J:\PROJECTS\2014\1401010482\_PREMIER\_ESTANCIA\05-CIVIL\CADD\PAV\RESIDENTIAL\PH114462\_PAV.DWG  
 J:\PROJECTS\2014\1401010482\_PREMIER\_ESTANCIA\05-CIVIL\CADD\PAV\RESIDENTIAL\PH114462\_PAV.DWG  
 PLOTTED: Tuesday, January 26, 2016 @ 04:32PM



- NOTES:**
- TOP OF CURB ELEVATIONS SHOWN ARE FOR FULL CURB. CONSTRUCT CURB AND GUTTER AS NOTED.
  - PVC SLEEVES TO BE BURIED AT A DEPTH OF 2' TO TOP OF SLEEVE, MINIMUM.

**LEGEND**

STREET SIGN & SIGN LOCATION (SEE SIGN ASSEMBLY TABLE FOR TYPE & STATION OF SIGN)  
 10' TRANSITION FROM FULL TO ROLL CURB



PAVING & INCIDENTAL DRAINAGE FOR  
**ESTANCIA ADDITION**  
 PHASE 1

©2016  
 MKEC Engineering  
 All Rights Reserved  
 www.mkec.com  
 These drawings and their contents, including, but not limited to, all concepts, designs, & ideas are the exclusive property of MKEC Engineering (MKEC), and may not be used or reproduced in any way without the express consent of MKEC.

<b>MIRABELLA</b>	
PROJECT NO.	472-85243
DATE	JAN. 2015
SCALE	1"=20'
DESIGNED	DRAWN
DFL	BKS
CHECKED	GJA
NO.	REVISION
SHEET NO.	
14 OF 37	