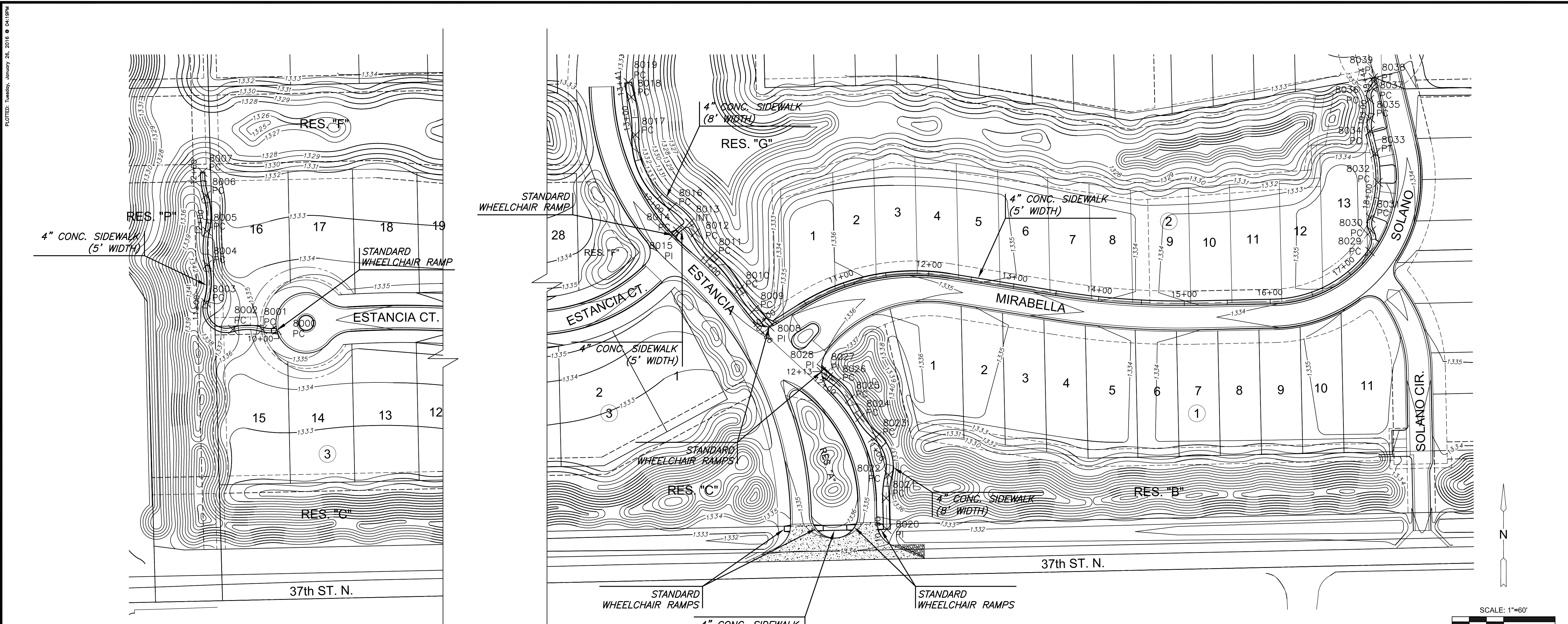


PAVING & INCIDENTAL DRAINAGE FOR
ESTANCIA ADDITION
PHASE 1



ESTANCIA CT. SIDEWALK	
STA. 10+00.00 TO 12+60.02	
1 CIRCULAR CURVE	
START STATION:	10+00.00
END STATION:	10+17.13
RADIUS:	35.00'
2 CIRCULAR CURVE	
START STATION:	10+17.13
END STATION:	10+52.24
RADIUS:	60.00'
3 CIRCULAR CURVE	
START STATION:	10+52.24
END STATION:	11+06.21
RADIUS:	25.00'
4 CIRCULAR CURVE	
START STATION:	11+06.21
END STATION:	11+51.02
RADIUS:	85.00'
5 CIRCULAR CURVE	
START STATION:	11+51.02
END STATION:	11+90.26
RADIUS:	85.00'
6 CIRCULAR CURVE	
START STATION:	11+90.26
END STATION:	12+32.50
RADIUS:	80.00'
7 CIRCULAR CURVE	
START STATION:	12+32.50
END STATION:	12+60.02
RADIUS:	85.00'

ESTANCIA NORTH SIDEWALK	
STA. 10+00.00 TO 13+41.46	
1 TANGENT	
START STATION:	10+00.00
END STATION:	10+26.95
LENGTH:	26.95'
2 CIRCULAR CURVE	
START STATION:	10+26.95
END STATION:	10+56.40
RADIUS:	129.00'
3 CIRCULAR CURVE	
START STATION:	10+56.40
END STATION:	11+06.79
RADIUS:	146.00'
4 CIRCULAR CURVE	
START STATION:	11+06.79
END STATION:	11+40.35
RADIUS:	79.00'
5 CIRCULAR CURVE	
START STATION:	11+40.35
END STATION:	11+81.09
RADIUS:	71.00'
6 CIRCULAR CURVE	
START STATION:	11+81.09
END STATION:	12+79.60
RADIUS:	94.00'
7 CIRCULAR CURVE	
START STATION:	12+79.60
END STATION:	13+41.46
RADIUS:	146.00'

ESTANCIA SOUTH SIDEWALK	
STA. 10+00.00 TO 12+13.32	
1 TANGENT	
START STATION:	10+00.00
END STATION:	10+33.31
LENGTH:	33.31'
2 CIRCULAR CURVE	
START STATION:	10+33.31
END STATION:	10+36.12
RADIUS:	196.00'
3 CIRCULAR CURVE	
START STATION:	10+36.12
END STATION:	10+42.11
RADIUS:	96.00'
4 CIRCULAR CURVE	
START STATION:	10+42.11
END STATION:	11+12.64
RADIUS:	44.00'
5 CIRCULAR CURVE	
START STATION:	11+12.64
END STATION:	11+24.28
RADIUS:	96.00'
6 CIRCULAR CURVE	
START STATION:	11+24.28
END STATION:	11+66.90
RADIUS:	250.00'

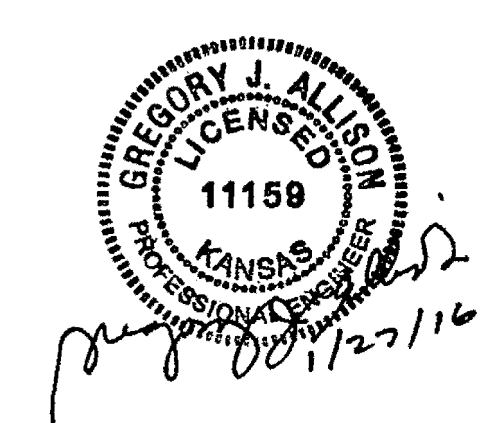
MIRABELLA SIDEWALK	
STA. 10+00.00 TO 19+43.71	
1 TANGENT	
START STATION:	10+00.00
END STATION:	10+42.11
LENGTH:	42.11'
2 CIRCULAR CURVE	
START STATION:	10+42.11
END STATION:	12+24.28
RADIUS:	251.00'
3 TANGENT	
START STATION:	12+24.28
END STATION:	13+52.78
LENGTH:	128.50'
4 CIRCULAR CURVE	
START STATION:	13+52.78
END STATION:	15+13.60
RADIUS:	883.00'

SOLANO CIR. SIDEWALK	
STA. 17+00.00 TO 17+40.00	
1 TANGENT	
START STATION:	17+00.00
END STATION:	17+40.00
LENGTH:	40.00'

SOLANO CIR. SIDEWALK	
STA. 17+40.00 TO 17+70.00	
1 TANGENT	
START STATION:	17+40.00
END STATION:	17+70.00
LENGTH:	30.00'

SIDEWALK POINTS			
Point #	Northing	Easting	Desc.
8000	1709906.63	1623485.70	PC
8001	1709907.43	1623468.75	PC
8002	1709907.42	1623434.14	PC
8003	1709938.62	1623403.00	PC
8004	1709982.89	1623404.39	PC
8005	1710021.78	1623404.33	PC
8006	1710063.50	1623402.88	PC
8007	1710090.65	1623399.15	PC
8008	1709910.66	1624648.85	PI
8009	1709930.61	1624630.73	PC
8010	1709954.47	1624613.59	PC
8011	1709993.41	1624582.00	PC
8012	1710020.10	1624562.07	PC
8013	1710031.54	1624555.48	INT
8014	1710022.08	1624541.55	PC
8015	1710017.28	1624536.48	PI
8016	1710050.41	1624535.70	PC
8017	1710133.91	1624492.36	PC
8018	1710178.08	1624487.59	PC
8019	1710194.96	1624484.10	PC

SIDEWALK POINTS			
Point #	Northing	Easting	Desc.
8020	1709674.90	1624785.17	PI
8021	1709711.01	1624784.38	PC
8022	1709738.17	1624787.30	PC
8023	1709782.58	1624773.15	PC
8024	1709805.02	1624753.80	PC
8025	1709826.43	1624741.90	PC
8026	1709845.53	1624726.14	PC
8027	1709852.25	1624717.29	PI
8028	1709858.41	1624709.01	PI
8029	1709998.22	1625347.57	PC
8030	1710022.41	1625349.21	PC
8031	1710037.28	1625348.29	PC
8032	1710078.60	1625357.00	PC
8033	1710112.34	1625353.63	PT
8034	1710138.60	1625347.32	PC
8035	1710153.41	1625347.86	PC
8036	1710175.25	1625347.13	PC
8037	1710189.03	1625350.27	PC
8038	1710196.29	1625352.47	PT
8039	1710200.44	1625351.48	PI



J:\PROJECTS\2014\1401010462_PREMIER_ESTANCIA\DWG\CAD\PAVING\RESIDENTIAL\PH1\1462_SW_PAVING.DWG

©2016 MKEC Engineering All Rights Reserved www.mkec.com These drawings and their contents, including, but not limited to, all concepts, designs, & ideas are the exclusive property of MKEC Engineering (MKEC), and may not be used or reproduced in any way without the express consent of MKEC.

SIDEWALK PLAN		
PROJECT NO.	472-85243	
DATE	JAN. 2015	
SCALE	1"=60'	
DESIGNED	DRAWN	CHECKED
DFL	BKS	GJA
NO.	REVISION	DATE
SHEET NO.		
18 OF 37		