

J:\PROJECTS\2017\1401010462\_PREMIER\_ESTANCIA\05-CIVIL\CAD\PAVING\RESIDENTIAL\PH114462\_BUBBLE\_RES1.DWG  
 PLOTTED: Tuesday, January 26, 2016 9:04:20AM

PLAT POINTS			
Point #	Northing	Easting	Desc.
500	1709683.12	1623023.34	PI
501	1709933.18	1623004.69	PI
517	1710024.33	1623279.27	PI
518	1709939.88	1623334.63	PI
519	1709655.27	1623342.51	PI
520	1709663.60	1623277.53	PI
521	1709658.73	1623050.19	PI
564	1709698.03	1625584.55	PI
565	1709680.12	1624748.65	PI
566	1709679.04	1624698.14	PI
567	1709650.74	1623377.83	PI
568	1709678.19	1624658.41	PI
569	1709692.16	1624694.62	PI
570	1709691.38	1624658.13	PI
571	1709693.38	1624751.61	PI
572	1709707.50	1624751.30	PI
573	1709708.28	1624787.80	PI
574	1709680.97	1624788.38	PI
575	1709847.58	1624666.04	PI
576	1709843.77	1624661.84	PI
577	1709934.41	1624635.14	PI

PLAT POINTS			
Point #	Northing	Easting	Desc.
578	1710008.43	1624567.24	PI
589	1709956.66	1624538.19	PI
590	1709952.22	1624533.91	PI
591	1709993.08	1624492.73	PI
592	1709997.25	1624496.76	PI
593	1709945.59	1624353.19	PI
594	1709887.99	1624346.38	PI
595	1709883.10	1624082.85	PI
596	1709940.41	1624073.92	PI
597	1709939.28	1623782.13	PI
598	1709881.91	1623773.63	PI
599	1709947.72	1623557.59	PI
600	1709889.94	1623562.82	PI
601	1709915.15	1623519.64	PI
624	1709866.85	1624703.94	PI
625	1709885.68	1624719.95	PI
626	1709903.31	1624704.09	PI
627	1709888.24	1624691.28	PI
628	1709902.42	1624678.96	PI
629	1709913.01	1624695.66	PI
630	1709933.43	1624683.98	PI

PLAT POINTS			
Point #	Northing	Easting	Desc.
631	1709913.18	1624652.04	PI
632	1709969.07	1624857.85	PI
633	1709936.59	1624858.23	PI
634	1709916.93	1624979.58	PI
635	1709948.51	1624984.70	PI
636	1709937.33	1625145.08	PI
637	1709905.33	1625145.77	PI
638	1709939.27	1625235.67	PI
639	1709907.28	1625236.35	PI
640	1709941.39	1625336.77	PI
641	1709937.62	1625361.87	PI
642	1709860.52	1625388.32	PI
643	1709765.54	1625390.36	PI
644	1709766.23	1625422.35	PI
645	1709861.21	1625420.31	PI
646	1709965.02	1625380.96	PI
647	1709986.55	1625379.64	PI
648	1710124.38	1625403.70	PI
649	1710116.90	1625372.59	PI
704	1709581.66	1622954.40	SC
707	1709638.05	1625585.96	SC

PAVING POINTS			
Point #	Northing	Easting	Desc.
7000	1709618.82	1624688.69	INT
7001	1709692.00	1624687.12	PC
7002	1709923.43	1624607.22	INT
7003	1709986.46	1624548.31	PRC
7004	1709996.97	1624536.80	INT
7005	1710189.97	1624452.86	END
7006	1709620.44	1624764.17	INT
7007	1709707.73	1624762.30	PC
7008	1709832.40	1624706.00	PT
7009	1709858.42	1624677.72	INT
7010	1709889.27	1624644.21	INT
7011	1709907.05	1624624.88	PI
7012	1709916.19	1623529.82	PC
7013	1709910.59	1623777.88	PRC
7014	1709911.76	1624078.38	PRC
7015	1709916.79	1624349.78	PRC
7016	1709972.64	1624513.31	PT
7017	1709898.56	1624714.66	PC
7018	1709948.93	1624860.24	PI
7019	1709919.92	1624692.55	PC
7020	1709953.28	1624855.29	PT

PAVING POINTS			
Point #	Northing	Easting	Desc.
7021	1709932.72	1624982.14	PC
7022	1709921.33	1625145.43	PT
7023	1709923.27	1625236.01	PC
7024	1709974.02	1625349.51	INT
7025	1710120.64	1625388.15	PT
7026	1710204.42	1625368.00	END
7027	1709634.26	1625409.17	INT
7028	1709860.86	1625404.32	PC
7029	1709967.27	1625356.74	PT

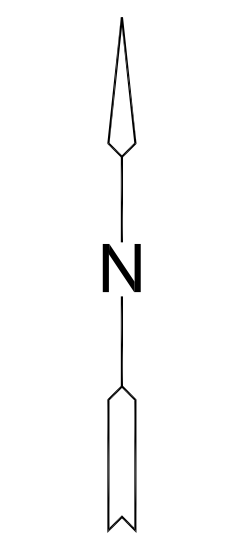
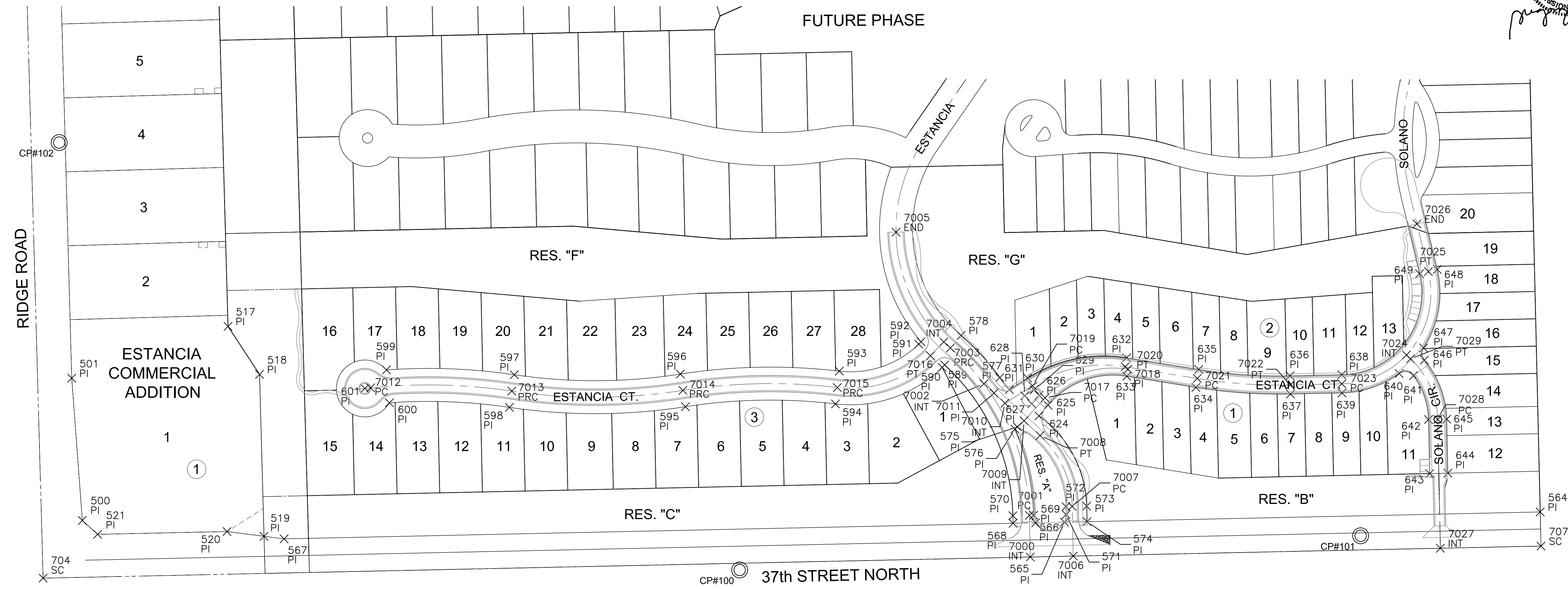
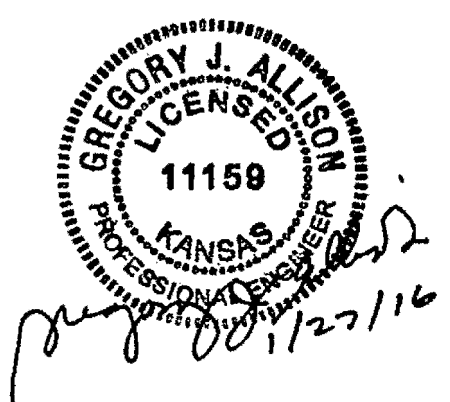
### CONTROL POINTS

**CP #100**  
 5/8" rebar with MKEC Aluminum Cap  
 N = 1709596.07 E = 1624178.12 Elev. = 1334.38  
 South side of 37th Street N., West of entrance drive to Mid  
 Kansas Pediatric Association at address 6837 W 37th St N.  
 36 feet NW of fire hydrant  
 6 feet south of south edge of asphalt

**CP #101**  
 5/8 inch rebar with MKEC Aluminum Cap  
 N = 1709656.12 E = 1625269.09 Elev. = 1331.35'  
 North side of 37th St. N  
 5 feet north of north edge of asphalt  
 On extended line to the north with the centerline of Ridgeport  
 Street

**CP #102**  
 5/8 inch rebar with MKEC Aluminum Cap  
 N = 1710347.41' E = 1622982.67' Elev. = 1330.50  
 East Ridge Road in flowline of ditch  
 45 feet northwest of 3rd powerpole north of 37th Street N

Horizontal and Vertical Datum:  
 Horizontal Datum: Kansas Coordinate System 1983 South Zone.  
 (Horizontal coordinates modified to ground using a scale factor of  
 1.000120014)  
 Vertical Datum: NAVD 88



EVERY ATTEMPT HAS BEEN MADE TO INSURE ALL COORDINATE VALUES SHOWN  
 ARE AN ACCURATE AND TRUE REPRESENTATION OF THE CURRENT PLANS. ALL  
 VALUES ARE TO BE CONFIRMED WITH THE FINAL SIGNED PLAN SET BEFORE USE.



PAVING & INCIDENTAL DRAINAGE FOR  
**ESTANCIA ADDITION**  
 PHASE 1

©2016  
 MKEC Engineering  
 All Rights Reserved  
 www.mkec.com  
 These drawings and their contents,  
 including, but not limited to, all concepts,  
 designs, & ideas are the exclusive  
 property of MKEC Engineering (MKEC),  
 and may not be used or reproduced in any  
 way without the express consent of MKEC.

### BUBBLE MAP

PROJECT NO.	472-85243	
DATE	JAN. 2015	
SCALE	1" = 100'	
DESIGNED	DFL	
DRAWN	BKS	
CHECKED	GJA	
NO.	REVISION	DATE