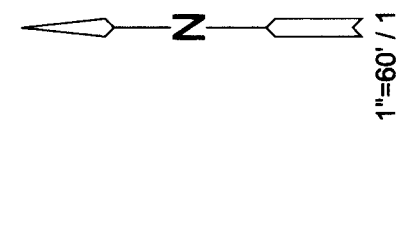


# FINAL PLAT

## ESTANCIA ADDITION

### AN ADDITION TO WICHITA, SEDGWICK COUNTY, KANSAS

Δ=16°23'08"  
R=400.00'  
C=114.04'  
CB=N80°13'08"E



#### LEGEND

Date of Survey: April 29, 2015

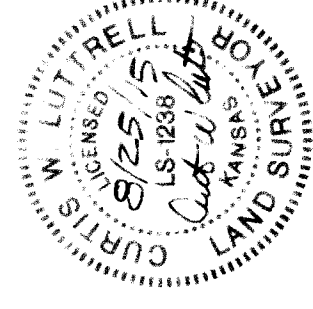
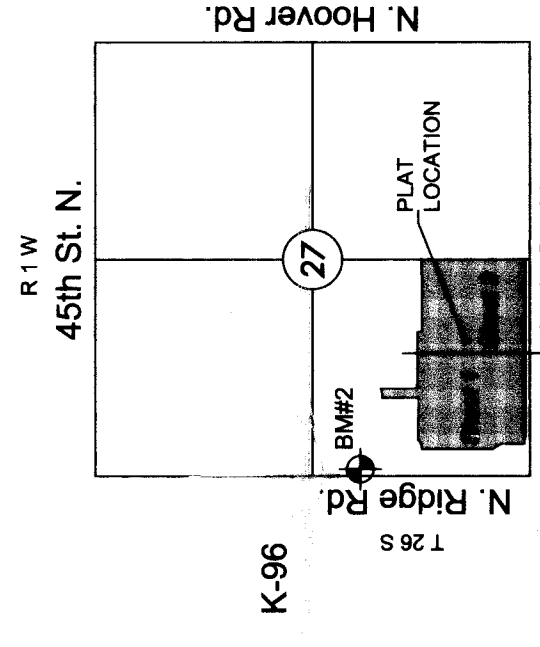
- ▲ = Section corner monument found
- ⊙ = Found 1/2" rebar w/ MKEC CLS 39 id. cap
- = Set 1/2" rebar w/ MKEC CLS 39 id. cap
- (M) = Measured
- (C/M) = Calculated from measured
- (D) = Described
- ⊕ = Benchmark
- U.E. = Utility Easement
- D.E. = Drainage Easement

#### BENCHMARK

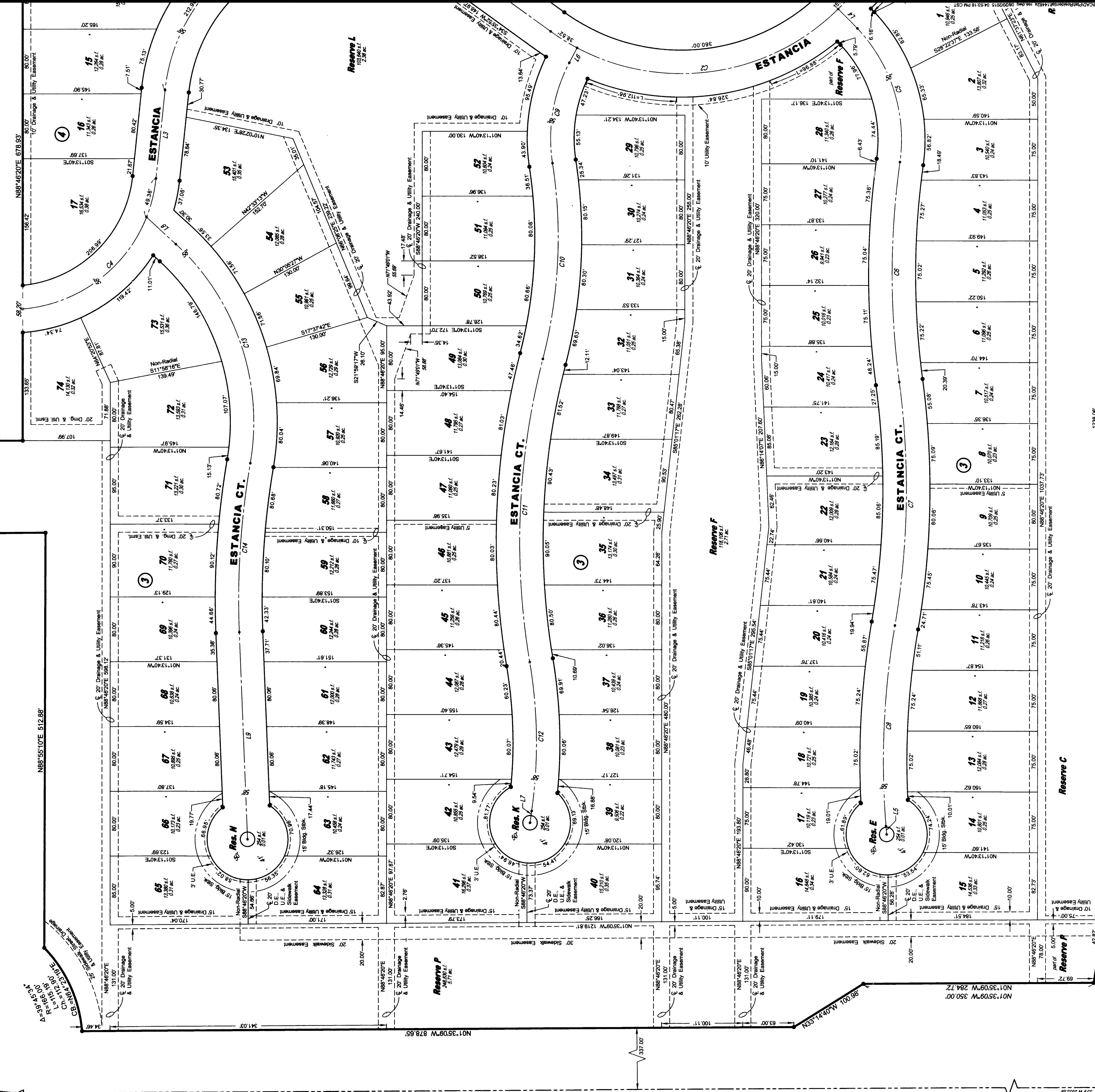
BMK2 ⊕ Square cut top of curb on west side of median island and 10 foot north of the south end of said median lying south of K-96 and Ridge Rd. being 339 feet S. of the NW corner SW 1/4, Sec. 27, T26S, R1W, 6th P.M.  
Elev. = 1335.80 NAVD88

MINIMUM PAD ELEVATIONS (LOWEST DRAINAGE)			
LOTS	BLOCK ELEVATION	PAVED	UNPAVED
15 - 41	3	1334.1	
49 - 56	3	1334.1	
64 - 74	3	1334.1	

#### VICINITY MAP



NW cor. SW 1/4, T26S, R1W, 6th P.M.  
Find: "x" Out



SE cor. SW 1/4, Sec. 27, T26S, R1W, 6th P.M.  
Find: "x" Rebar

State of Kansas: Kansas coordinate system of 1983 based on the mean of NAD 83 and NAD 83 (NAD 83) Complete Access Control 1306.05'

P.O.C.  
SW cor. SW 1/4, Sec. 27, T26S, R1W, 6th P.M.  
Find: Mag nail in asphalt roadway

