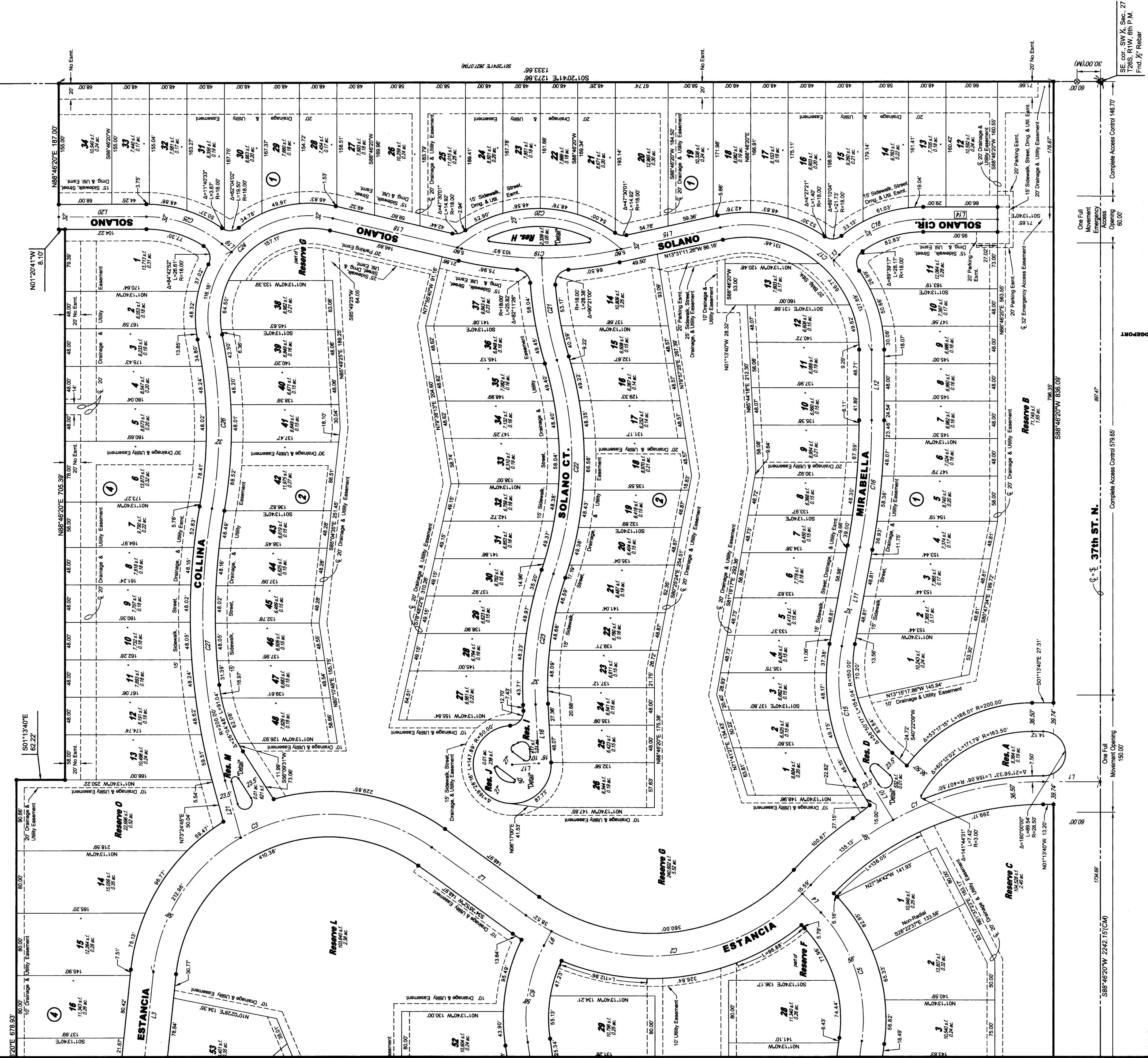


# FINAL PLAT

## ESTANCIA ADDITION

AN ADDITION TO WICHITA, SEDGWICK COUNTY, KANSAS

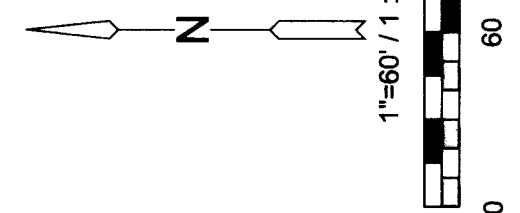
NE cor. SW 1/4 Sec. 27  
T26S, R1W, 6th P.M.  
Frd. Limestone 4.5' deep  
with diavit in center



SE cor., SW 1/4, Sec. 27  
T26S, R1W, 6th P.M.  
Frd. Limestone  
1/4' x 1/4' Rebar

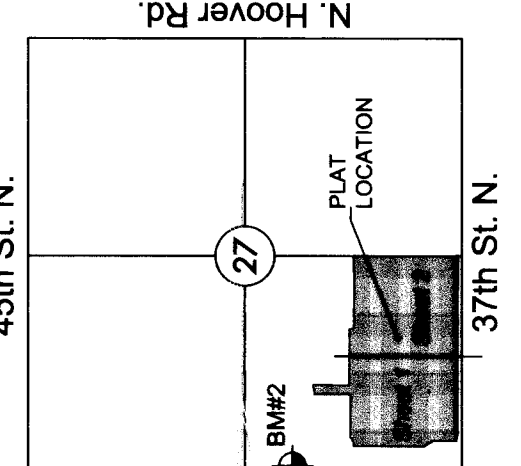
**LEGEND**  
Date of Survey: April 29, 2015

- △ = Section corner monument found
- ⊙ = Found 3/4" rebar w/ MKEC CLS 39 id. cap
- = Set 3/4" rebar w/ MKEC CLS 39 id. cap
- (M) = Measured
- (CM) = Calculated from measured
- (D) = Described
- ⊕ = Benchmark
- U.E. = Utility Easement
- D.E. = Drainage Easement



| MINIMUM PAD ELEVATIONS<br>(LOWEST OVERNEST) |                             |
|---|-----------------------------|
| LOTS  | BLOCK ELEVATION<br>NAVD 28' |
| 1 - 48                                      | 1334.1                      |
| 5, 6, 13, 14                                | 1334.1                      |

**BENCHMARK**  
BM#2 Square cut top of curb on west side of median island and 10 foot north of the south end of said median lying south of K-96 and Ridge Rd. (being 338 feet S. of the NW corner SW 1/4, Sec. 27, T26S, R1W, 6th P.M.)  
Elev. = 1335.80 NAVD83



Basis of Bearing: Kansas coordinate system of 1983  
south zone grid bearing of N88°46'20"E on the south of  
the SW 1/4, Sec. 27, T26S, R1W, 6th P.M.  
This plat is surveyed and platted on NAD83 using  
Kansas state plane south zone coordinates, modified to  
the surface, having a combined adjustment scale factor  
of 1.000120014401728

