

STREET PAVING AND INCIDENTAL STORM WATER SEWER FOR WHEATLAND to serve

TURKEY CREEK 3RD ADDITION - PHASE 3A

Wheatland: From the east line of Lot 103, Block A, west to the east line of Jewel
 Jewell: From the north line of Wheatland, west to the west line of Lot 31, Block H
 Wheatland Ct.: From the west line Wheatland, west to and including the cul-de-sac
 Jewell Cir.: From the north line of Jewell, east to and including the cul-de-sac

CITY OF WICHITA, KANSAS

Gary Janzen, P.E. City Engineer

Project Number

472-84488

OCA Number

766354

GENERAL NOTES:

- Contractor will be required to provide notice to utility companies a minimum of forty-eight (48) hours prior to any excavation, as follows:
 Kansas One-Call 687-2470
 The Contractor must notify the following in case of an emergency:
 Cox Communications 262-4270
 Kansas Gas Service 1-888-482-4950
 Westar Energy 383-8650
 Aquila Energy 1-800-303-0357
 AIT 268-2245
 City of Wichita Water Dept. 268-4563
 City of Wichita Sewer Maint. 268-4024
 City of Wichita Storm Sewer Maint. 268-4090
 City of Wichita Traffic Maint. 268-4034
 Conoco Phillips Pipeline Co. 1-877-267-2290
 Southern Star Pipeline Co. 529-6600
 Kinder-Morgan Pipeline Co. 1-888-844-5658
- Utility service lines, poles, valve boxes, meters, and etcetera are to be adjusted as necessary by others prior to construction unless the plans specifically call for their adjustment by the Contractor or unless the plans specifically identify a utility to be adjusted by its owner during construction. Existing utilities and their location, as shown on the plans, represent the best information obtainable for design. The Contractor will be required to work around existing utilities within the right-of-way which do not conflict with proposed construction.
- Rubble from the removal of miscellaneous structures and excess excavation which is to be wasted shall be disposed of on sites to be provided by the Contractor. These sites shall be approved by the Engineer as to suitability, appearance and site location. Locations, in the opinion of the Engineer, that will leave an unsightly appearance will not be approved. All disposal sites must be approved by the Kansas Department of Health and Environment. Material either stockpiled or disposed of in a flood plain would require a Kansas State Board of Agriculture permit. Any material dumped in waters of the United States or wetlands is subject to U.S. Corps of Engineers permitting regulations. Any material buried or stockpiled beyond approved construction limits would require additional archaeological investigations unless buried in a previously approved borrow location.
- Trees and shrubs in public right-of-way which are in direct conflict with proposed new construction shall be removed by the Contractor ONLY with the Developer or Baughman Company approval. Trees and shrubs which are not in direct conflict with proposed new construction shall be saved and protected from damage.
- The Contractor shall give all property owners and/or tenants of developed property abutting the construction of this project a minimum of ten (10) days notice prior to start of construction.
- The Contractor shall be responsible for preserving property irons. The Contractor will be required to re-establish any property irons which are damaged or destroyed by his construction operations. Such irons shall be re-established by a licensed Land Surveyor in accordance with state laws.
- All existing and proposed erosion control measures including silt fencing, erosion control mat, straw bales, inlet barriers, and const. entrance shall be maintained throughout construction by the Contractor and until project is accepted by the City of Wichita. The on-site Engineer shall complete weekly reports on the status of erosion control measures. The Contractor shall be required to comply with maintenance and/or replacement of erosion control measures as determined by the on-site Engineer until project is accepted by City of Wichita.
- A saw cut of at least one-half the depth of existing surface courses or one-fourth the depth of the existing total pavement thickness shall be provided at locations where proposed construction abuts the existing surface course or pavement for which partial removal of that surface or pavement is required. Sawed joint to facilitate removal within three (3) feet of existing joints will not be permitted and for such instances the limits of removal shall extend to the existing joint. Such saw cuts will not be paid for directly and this cost shall be considered as subsidiary to the removal of the surface or pavement.
- All areas disturbed during construction within Reserve "G" above the static water elevation shall be seeded, mulched (excluding areas where erosion control mat will be installed), and fertilized as follows (Permanent Seeding):
 Seed: Kansas Premium Fescue Blend:
 8 lbs./1000 sq. ft. & Rye grass (PLS) 3 lbs./1000 sq. ft.
 Mulch: Prairie Hay; 2 tons/acre
 Fertilizer: 12-24-12; 350 lbs./acre
 All other areas disturbed during construction shall be seeded as follows (Temporary Seeding):
 Seed: Rye grass (PLS)--8 lbs./1000 Sq. Ft.
 All costs associated with seeding, mulching, and fertilizing shall be included in bid item "Seeding".
 All seeding operations shall conform to City of Wichita Standard Specifications.
- The Contractor shall drain any standing water in sump areas of the proposed pavement. Contractor shall overexcavate and recompact these areas as required to maintain compaction of 95% Standard Proctor Density. Cost to be incidental to pavement.
- The Contractor shall adjust valve boxes as necessary to match proposed grade. Cost to be included in bid item, "Site Restoration."
- Limits of earthwork shall match existing ground elevations at the right-of-way line unless otherwise noted on the plans with a new finished grade elevation. When a new finished grade elevation is shown, the earthwork shall extend one foot beyond the right-of-way line and then slope up or down using permissible slopes to match the existing ground surface.
- The Developer for this project is Paul Kelsey PH# (316)722-1077.
- Excess excavation shall be stockpiled or spread on-site at a location determined by the Developer or Design Engineer.

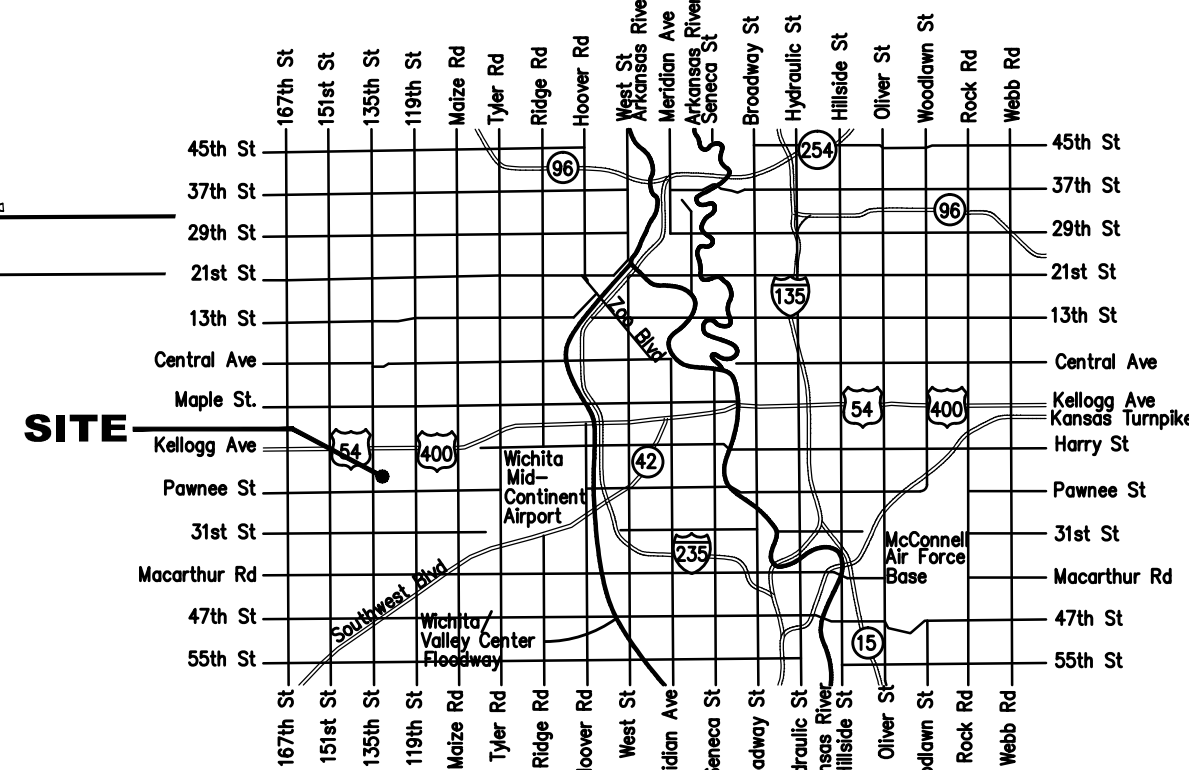
BENCHMARKS

BM #1: "□" Cut in top of curb, north of NW corner of Lot 44, Block H, Turkey Creek 3rd Addition.
 Elev. = 1333.17 NGVD29

BM #2: "□" Cut in top of curb, south end of south curb return SW corner of Grant & Wheatland.
 Elev. = 1335.13 NGVD29

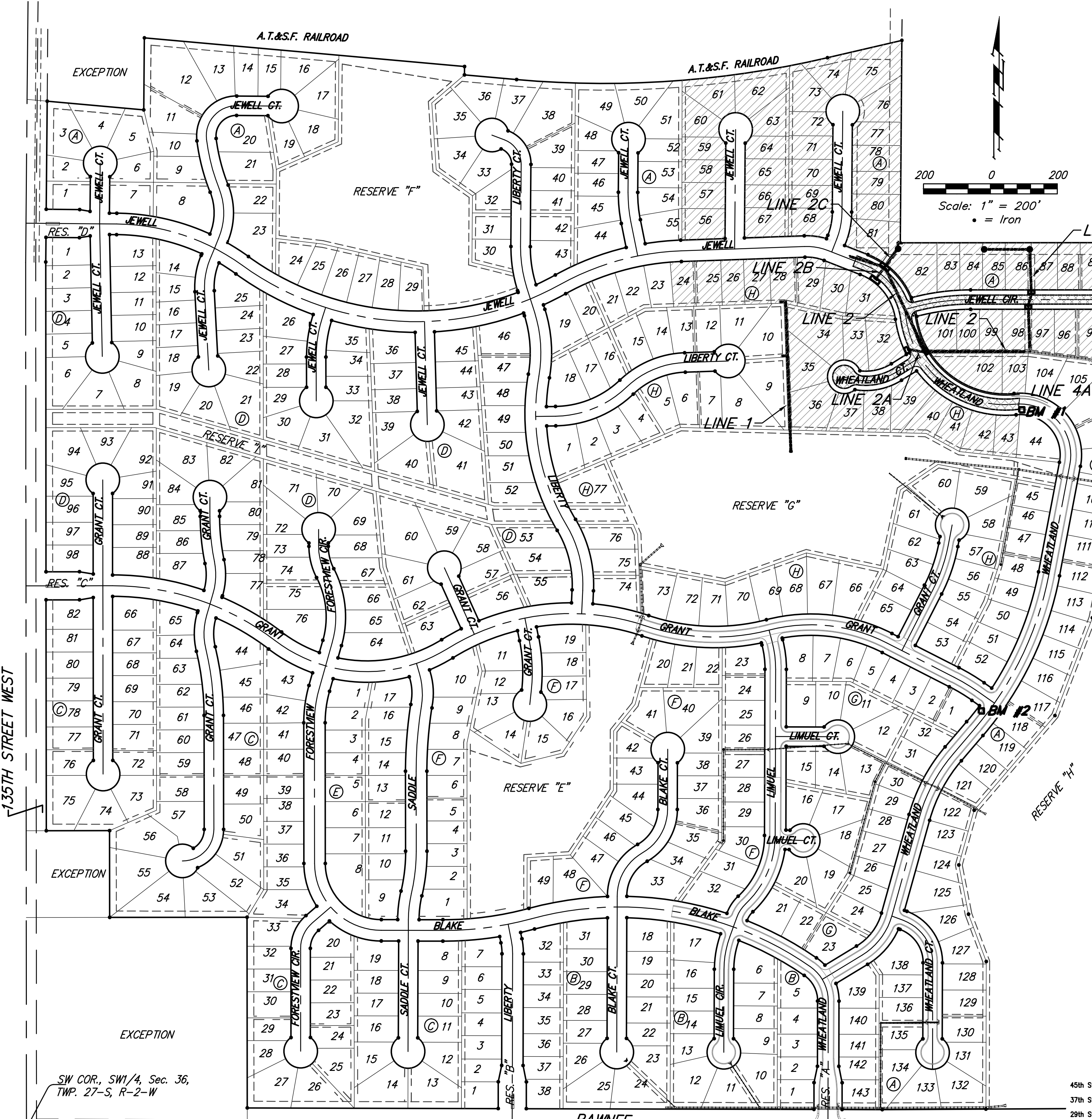
SHEET INDEX

Title Sheet	1
Asphalt Paving Details	2
Curb & Gutter Details	3
Sign Details	4
Valley Gutter Details	5
Wheelchair Ramp Details	6
Pavement Underdrain Details	7
Wheatland	8-9
Jewell Cir	10
SWS Line 1	11-12
SWS Line 2 & Line 2A	13
SWS Line 2B & Line 2C	14-15
SWS Line 3	16
SWS Line 4	17-18
SWS Line 4A	19
Erosion Control Plan	20
Erosion Control BMP Details	21
Std. Type 1A Curb Inlet Detail	22-26
Backyard Inlet Detail	27
Precast Manhole Detail	28
Ring & Cover Detail	29
Cross Sections	30
Coordinate Sheet	31-35
Copy of Plat	36-37
	38



Vicinity Map

Proposed Streets: [Grid Pattern] Benefit District: [Diagonal Line Pattern]



Project Earthwork Totals (CY unadjusted)			
	Excavation	Loose Fill	Compacted Fill
Easement Grading	169	395	
Street (R/W)	1,104	478	62
Project Total	1,273	873	62

Total Project Length
 1,607 L.F. = 0.30 Miles



Baughman Company, P.A. 315 Ellis St. Wichita, KS 67211 P 316-262-7271 F 316-262-0149
 ENGINEERING | SURVEYING | PLANNING | LANDSCAPE ARCHITECTURE