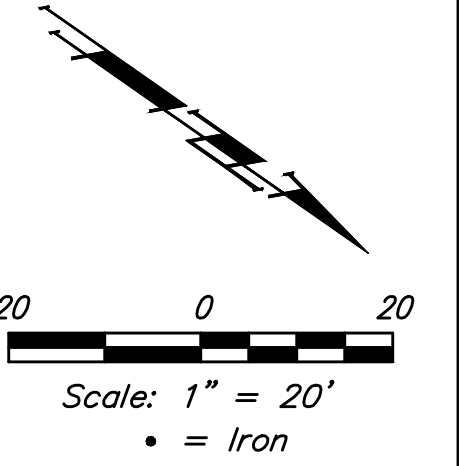


**BENCHMARKS:**

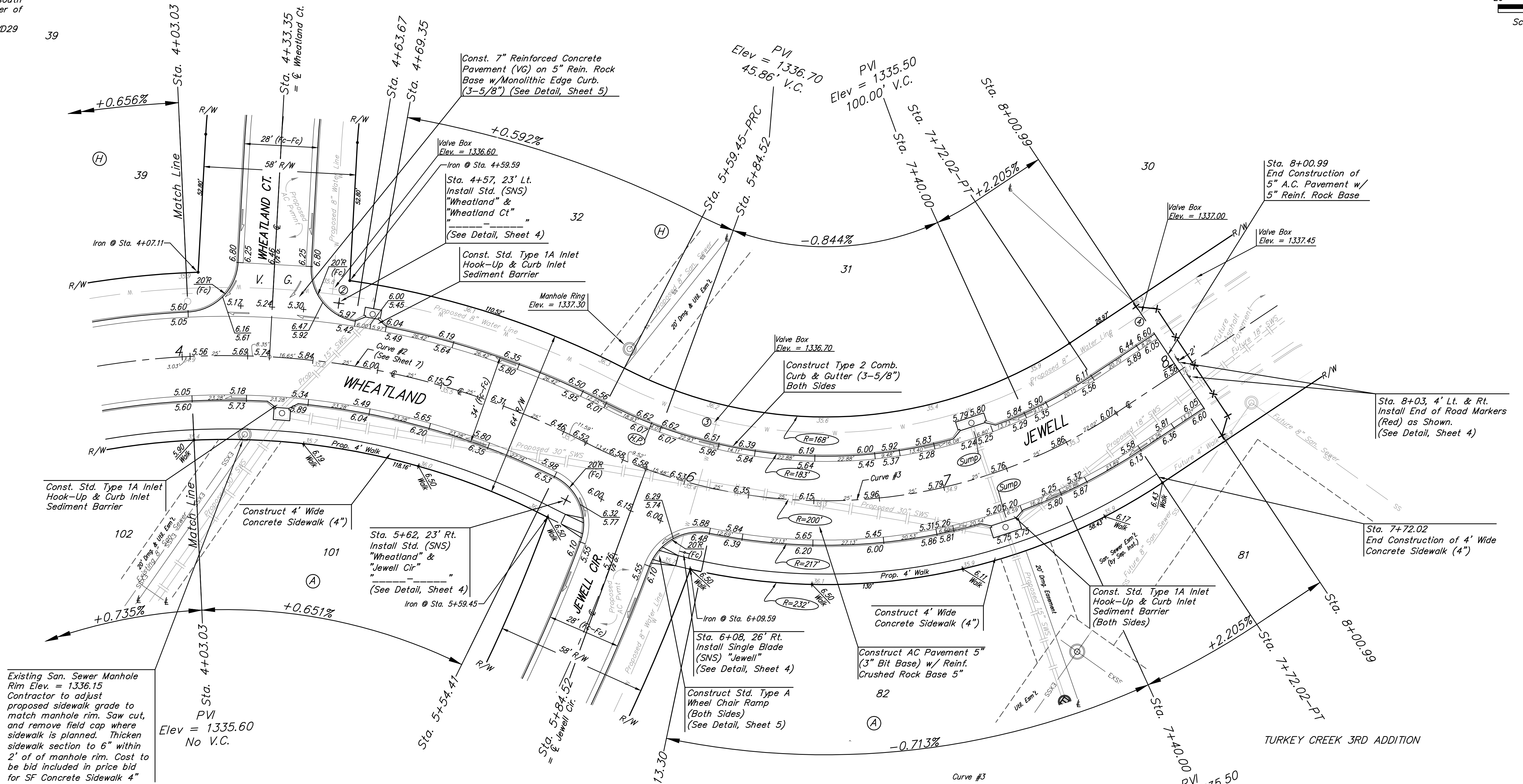
BM #1: "□" Cut in top of curb, north of NW corner of Lot 44, Block H, Turkey Creek 3rd Addition. Elev. = 1333.17 NGVD29

BM #2: "□" Cut in top of curb, south end of south curb return SW corner of Grant & Wheatland. Elev. = 1335.13 NGVD29

TURKEY CREEK 3RD ADDITION



39



Existing San. Sewer Manhole Rim Elev. = 1336.15  
Contractor to adjust proposed sidewalk grade to match manhole rim. Saw cut, and remove field cap where sidewalk is planned. Thicken sidewalk section to 6" within 2' of of manhole rim. Cost to be bid included in price bid for SF Concrete Sidewalk 4"

VALVE LOCATION TABLE

VALVE NUMBER	BASILINE STATION	OFFSET DISTANCE	OFFSET DIRECTION
1	0+69.84	26'	Lt.
2	4+54.21	28'	Lt.
3	6+06.31	24'	Lt.
4	8+00.95	26'	Lt.

Curve #3  
Curve Data Based on Centerline  
Rad. = 200' Delta = 60°53'44" Tangent = 117.56'  
Arc = 212.57' L.C. = 202.70' Def./ft. = 8.59419 Min.

Station	Arc	Face Chord Lengths		Defl.	Total Defl.
		8' Left	8' Right		
5+59.45	-	-	-	0°00'00"	0°00'00"
5+75.00	15.55'	13.60'	17.49'	2°13'38"	2°13'38"
5+84.52	9.52'	8.33'	10.71'	1°21'49"	3°35'27"
6+00.00	15.48'	13.54'	17.41'	2°13'03"	5°48'30"
6+13.30	13.30'	11.64'	14.96'	1°54'18"	7°42'48"
6+25.00	11.70'	10.24'	13.16'	1°40'33"	9°23'21"
6+50.00	25.00'	21.86'	28.11'	3°34'51"	12°58'12"
6+75.00	25.00'	21.86'	28.11'	3°34'52"	16°33'04"
7+00.00	25.00'	21.86'	28.11'	3°34'51"	20°07'55"
7+25.00	25.00'	21.86'	28.11'	3°34'51"	23°42'46"
7+50.00	25.00'	21.86'	28.11'	3°34'51"	27°17'37"
7+72.02	22.02'	19.26'	24.76'	3°09'15"	30°26'52"

PVI  
Elev = 1335.50  
100.00' V.C.



Roll type curb & gutter to be constructed on the pavement on this sheet.  
Top of curb elevation are given for full height curb.

Turkey Creek 3rd Addition - Phase 3A  
**WHEATLAND**  
Sta. 4+03.03 to Sta. 8+00.99

Baughman  
ENGINEERING | SURVEYING | PLANNING | LANDSCAPE ARCHITECTURE

PROJECT NUMBER: 472-84488  
DESIGN: AEG  
APPROVED: [Signature]  
DATE: 1/25/16  
SCALE: Noted  
SHEET: 9 OF 38